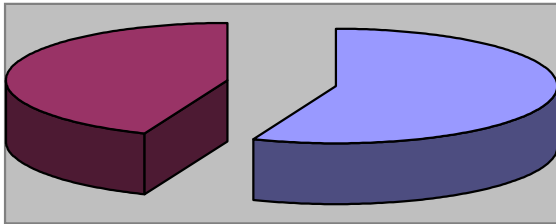


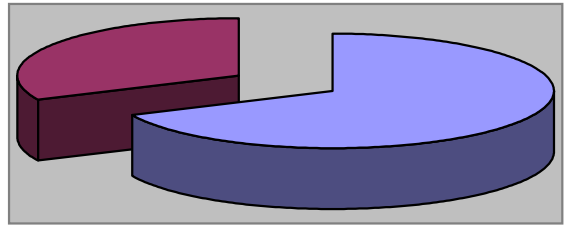
Waynesville Parks & Recreation Department  
**September 2008**  
**Monthly Review**

**Waynesville Recreation Center Member Demographics**



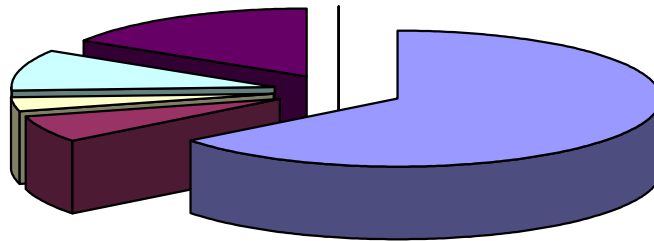
■ Males ■ Females

56% of visits in September were males  
 44% of visits in September were females



■ Non-Residents ■ Residents

68% of visits in September were non-residents  
 32% of visits in September were residents



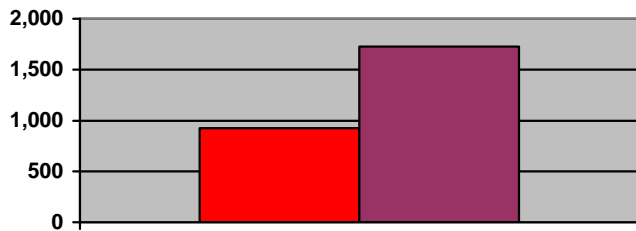
■ Friend ■ Been here before ■ Family ■ Local ■ Media ■ Employer

**How did you hear about us?**

- Friend—20
- Been here before—2
- Family—1
- Local—3
- Media—5
- Employer—0



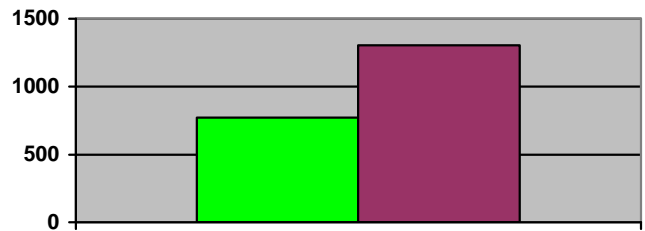
# Waynesville Recreation Center Memberships



■ 2007 ■ 2008

## Grand total WRC members through September:

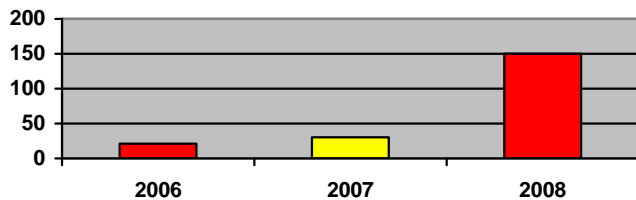
- 2007—925
- 2008—1,728



■ 2007 ■ 2008

## Grand total WRC memberships through September:

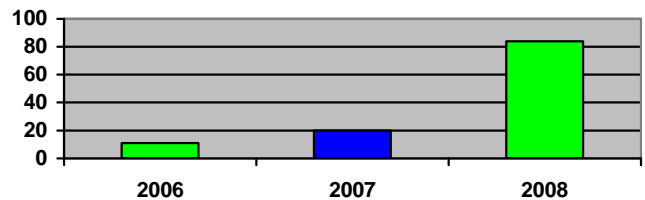
- 2007—772
- 2008—1,305



■ 2006 ■ 2007 ■ 2008

## New WRC members for the month of September:

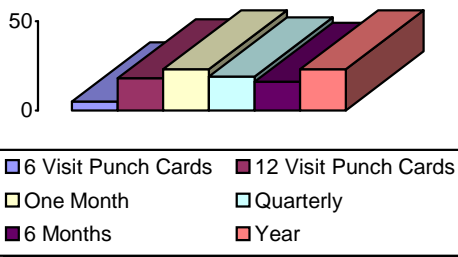
- 2006—21
- 2007—30
- 2008—150



■ 2006 ■ 2007 ■ 2008

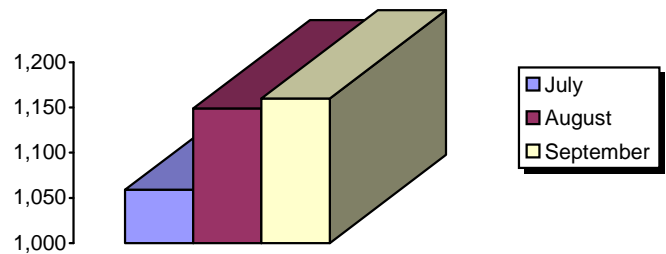
## New WRC memberships for the month of September:

- 2006—11
- 2007—20
- 2008—84



## Types of memberships sold in September:

- 6 visit punch card—5
- 12 visit punch card—18
- Month—23
- Quarterly—19
- 6 months—16
- Year—23

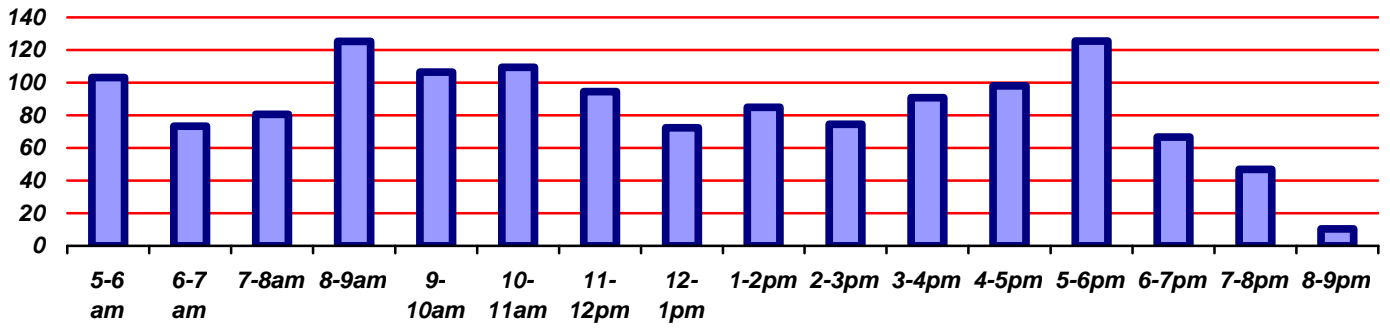


## Corporate memberships:

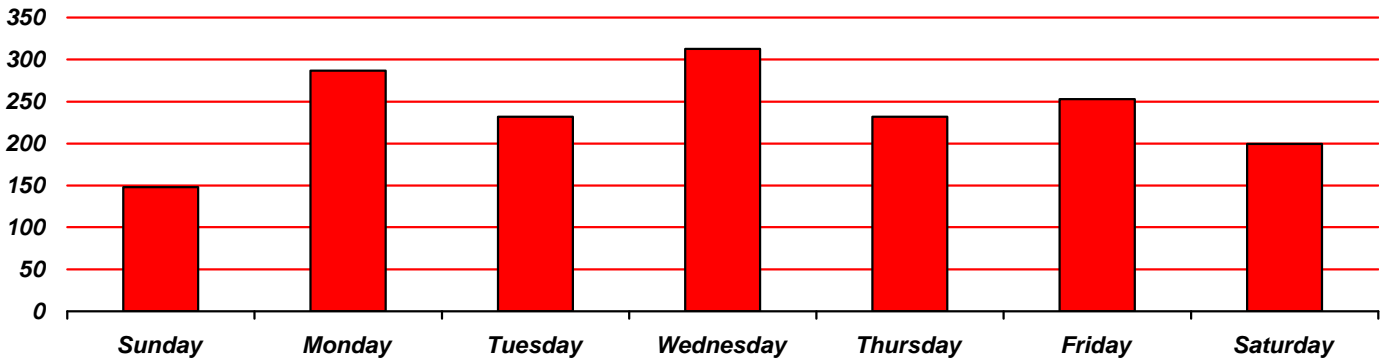
- July—1,059
- August—1,149
- September—1,160



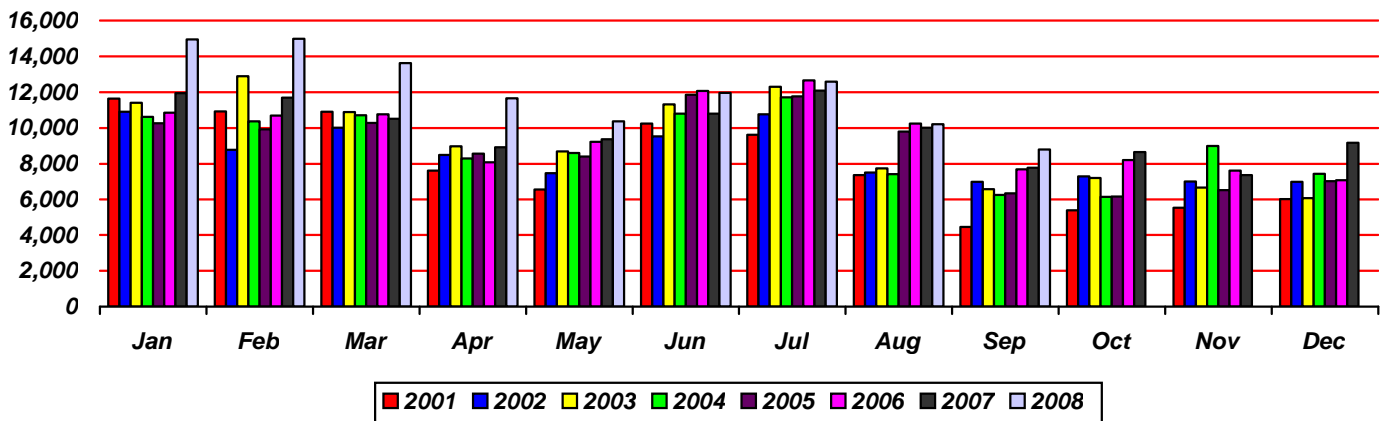
# Waynesville Recreation Center Visits



Average hourly visits for September



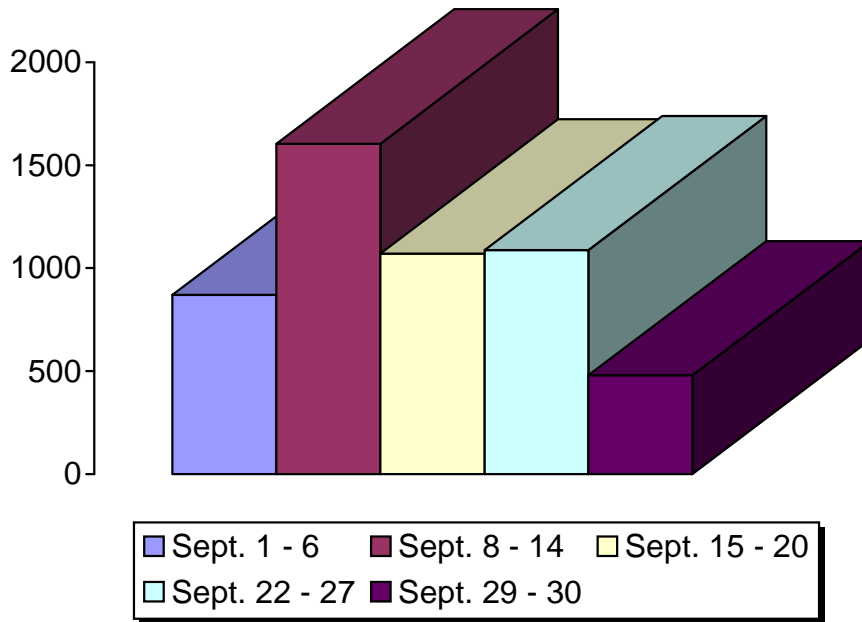
Average daily visits for September



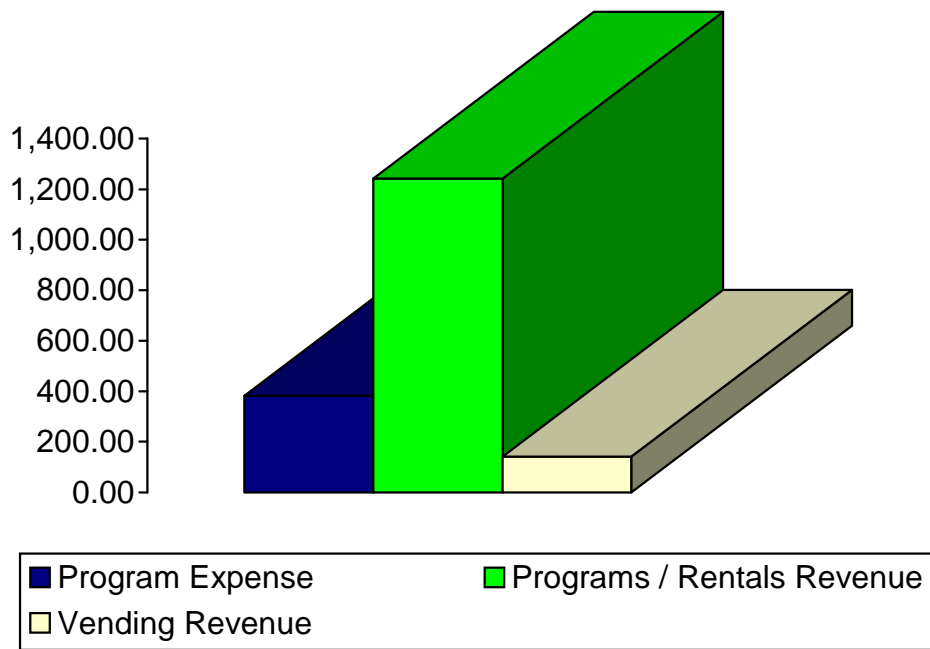
Total Waynesville Recreation Center visits from 2001-2008



# Old Armory Program Participants and Revenue



**Total Program Participants for September**  
 • 5,111



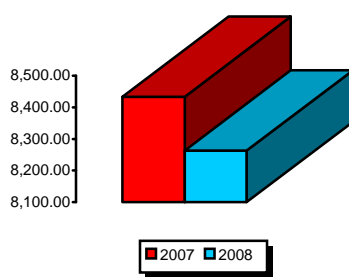
**Total Program Revenue for September**  
 • \$1,032.56

# Waynesville Recreation Center Revenue



## Membership Revenue for September

- 2007—19,829.29
- 2008—27,353.30



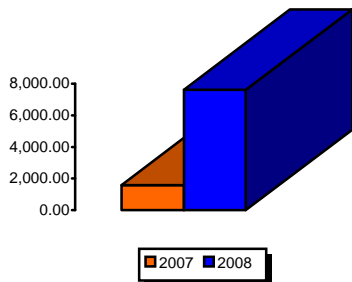
## Daily Admissions Revenue for September

- 2007—8,433.40
- 2008—8,263.06



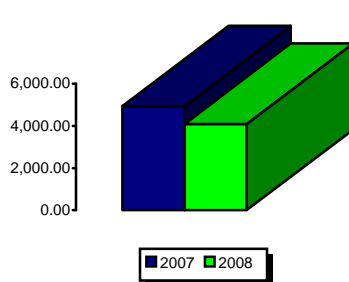
## Facility Rental Revenue for September

- 2007—2,696.50
- 2008—3,336.06



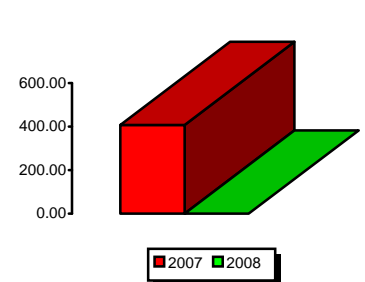
## General Fund Revenue for September

- 2007—1,587.54
- 2008—7,617.50



## Programs Revenue for September

- 2007—4,937.31
- 2008—4,099.15



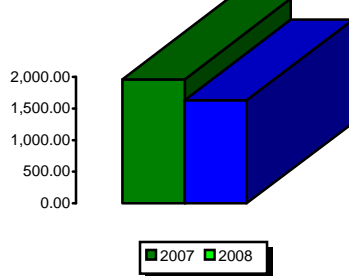
## Child Care Revenue for September

- 2007—408.50
- 2008—0



## Commissions (Pepsi) for September

- 2007—512.93
- 2008—120.85



## Resale/Vending/Other for September

- 2007—1,961.99
- 2008—1,631.66



## Total Revenues for September

- 2006—47,925
- 2007—41,981
- 2008—56,929

