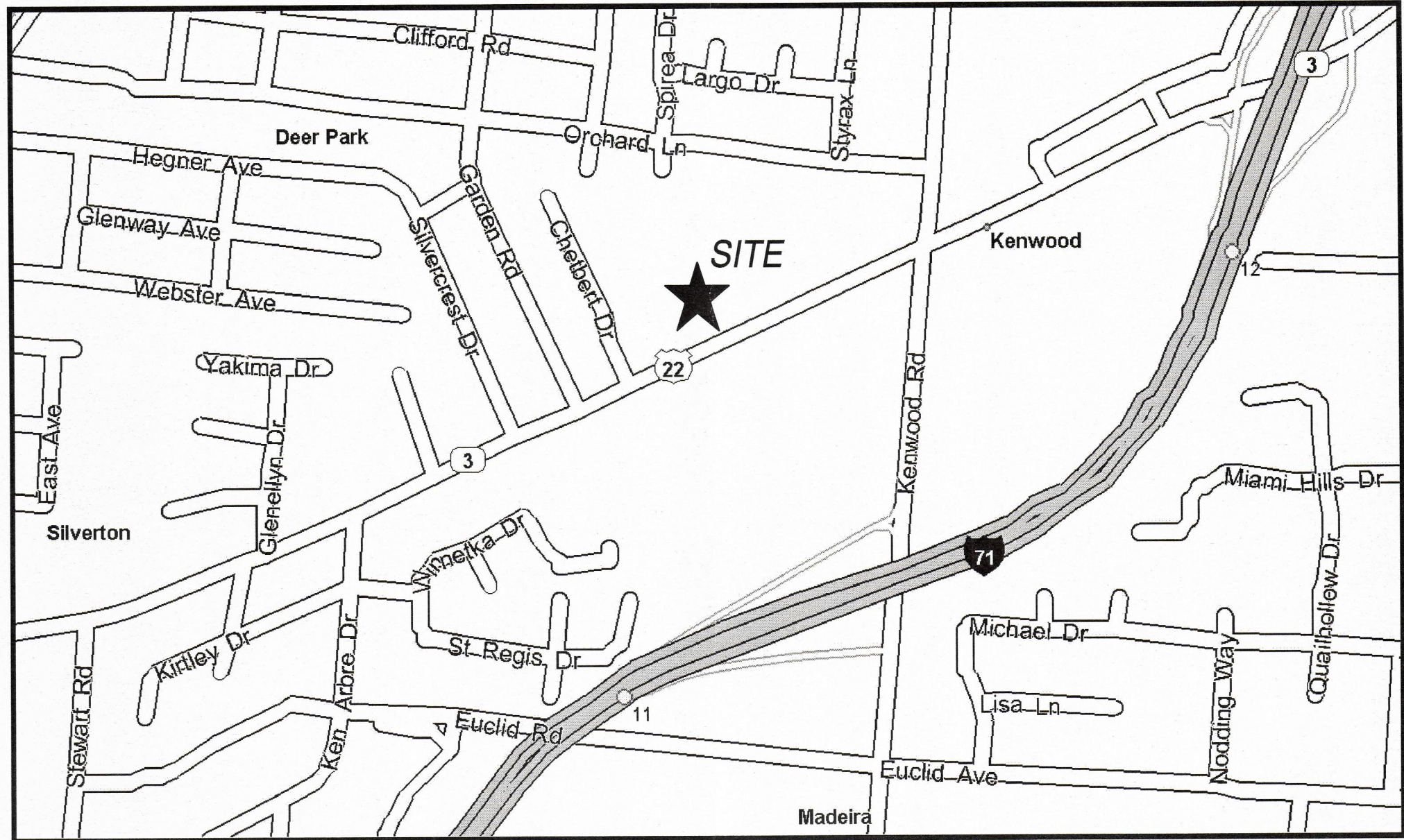
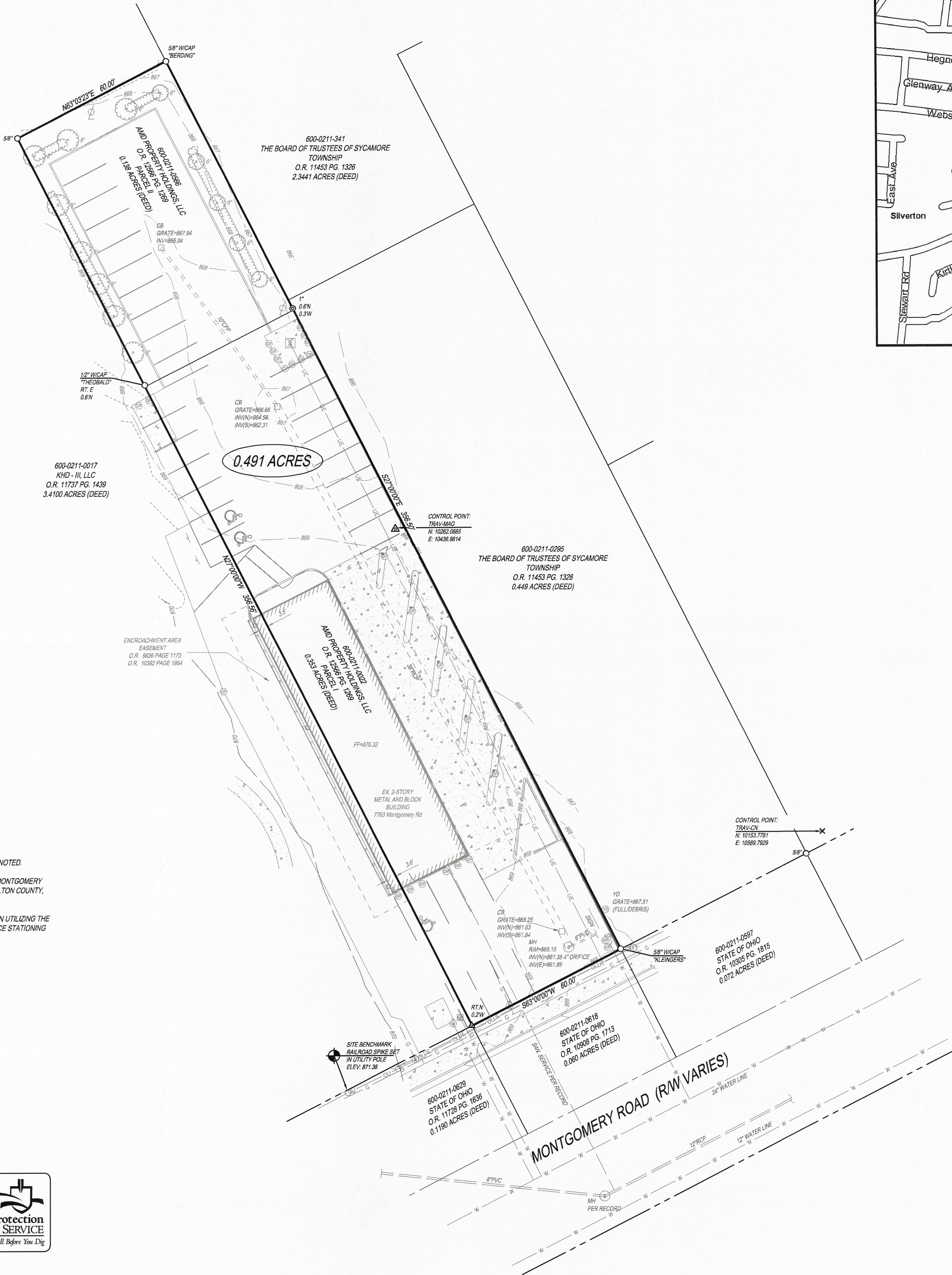




- NOTES:
1. SOURCE DOCUMENTS AS NOTED.
 2. OCCUPATION IN GENERAL FITS SURVEY.
 3. MONUMENTATION IS IN GOOD CONDITION UNLESS OTHERWISE NOTED.
 4. BEARINGS ARE BASED ON THE NORTH RIGHT OF WAY LINE OF MONTGOMERY ROAD BEING $S63^{\circ}00'00''W$ PER O.R. 12566 PG. 1289 OF THE HAMILTON COUNTY, OHIO RECORDERS OFFICE.
 5. VERTICAL DATUM IS BASED ON NAVD 88 PER GPS OBSERVATION UTILIZING THE OHIO DEPARTMENT OF TRANSPORTATION'S VIRTUAL REFERENCE STATIONING SYSTEM.
 6. SITE BENCHMARK SHOWN HEREON

NOTE:
UNDERGROUND UTILITIES ARE PLOTTED FROM A
COMPILED OF AVAILABLE RECORD INFORMATION AND
SURFACE INDICATIONS OF UNDERGROUND STRUCTURES AND
MAY NOT BE INCLUSIVE. PRECISE LOCATIONS AND THE
EXISTENCE OR NON EXISTENCE OF UNDERGROUND UTILITIES
CANNOT BE VERIFIED. PLEASE NOTIFY THE OHIO UTILITY
PROTECTION SERVICE AT 1-800-362-2764 BEFORE ANY PERIOD
OF EXCAVATION OR CONSTRUCTION ACTIVITY.



VICINITY MAP
N.T.S.

- LEGEND
- IRON PIN FOUND (SIZE AS NOTED)
 - △ MAG NAIL FOUND
 - ⊗ PIPE FOUND
 - × CROSS NOTCH FOUND
 - DOWN SPOUT
 - CATCH BASIN
 - ⊕ CLEAN OUT
 - ⊙ STORM MANHOLE
 - ⊙ YARD DRAIN
 - ⊙ LIGHT POLE
 - ⊙ TRANSFORMER
 - ⊙ UTILITY POLE
 - ⊙ GAS VALVE
 - ⊙ FIRE DEPARTMENT CONNECTION
 - ⊙ POST INDICATOR VALVE
 - ⊙ WATER METER
 - ⊙ WATER VALVE
 - ⊙ TELEPHONE BOX
 - ⊙ GUARD POST
 - ⊙ HANDICAP PARKING SPACE
 - ⊙ SIGN - SINGLE POST
 - ⊙ SIGN - DOUBLE POST
 - ⊙ TREE - DECIDUOUS
 - LANDSCAPE AREA
 - BUSH LINE
 - OU --- AERIAL UTILITY LINE
 - UE --- UNDERGROUND ELECTRIC LINE
 - G --- GAS LINE
 - S --- STORM SEWER
 - SS --- SANITARY SEWER
 - CONCRETE AREA
 - ASPHALT AREA



CIVIL ENGINEERING
SURVEYING
LANDSCAPE
ARCHITECTURE

www.kleingers.com
6305 Centre Park Dr.
West Chester, OH 45069
513.779.7851

SEAL:



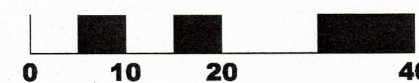
NO. DATE DESCRIPTION
1 8/8/16 INITIAL SURVEY - DKY

**BOUNDARY &
TOPOGRAPHIC
SURVEY**
0.491 ACRES
SEC. 13, TOWN 4 E. RANGE 1, 8TH
SYCAMORE TOWNSHIP
HAMILTON COUNTY, OHIO

PROJECT NO. 150508VSD000

DATE: 8/8/16

SCALE: 1" = 20'



SHEET NAME:

**CINCINNATI
FACIAL PLASTIC
SURGERY**

SHEET NO.

1 OF 1

