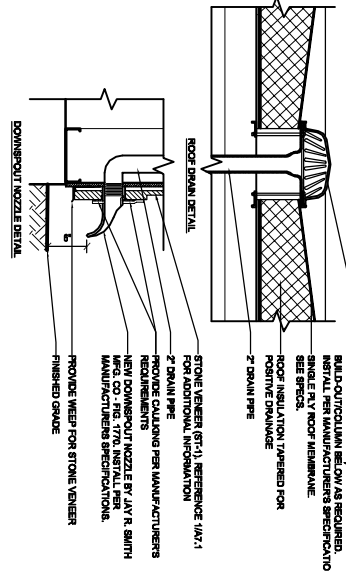
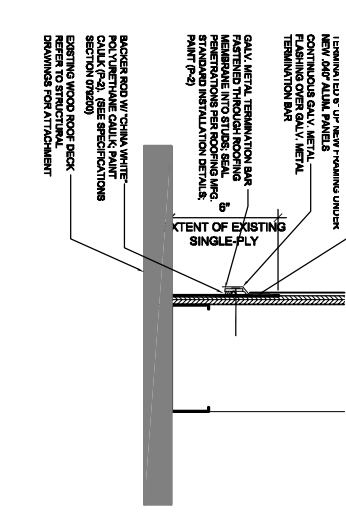


3 PARAPET DETAIL
1/16"=1'-0"

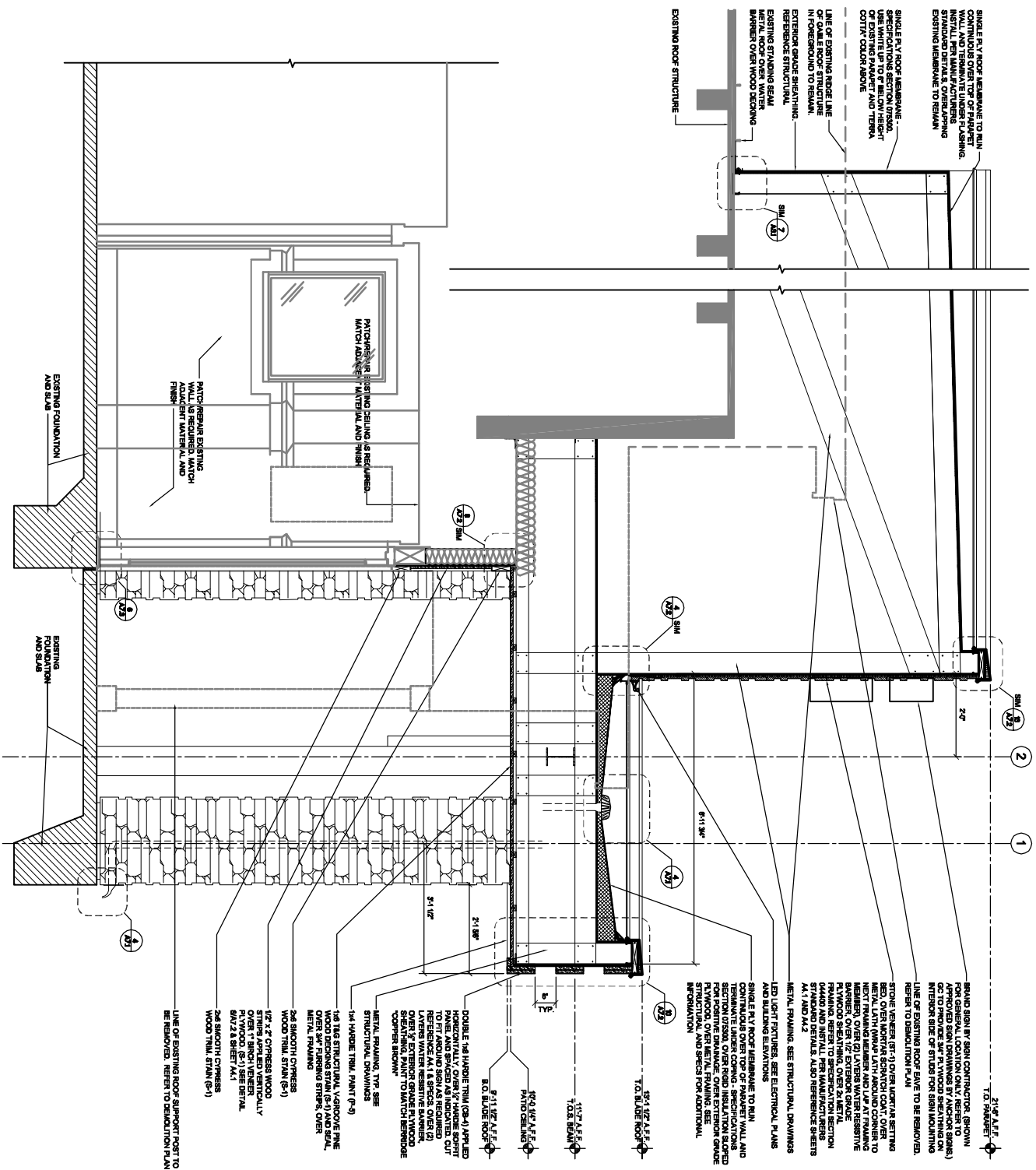


4 ROOF DRAIN & NOZZLE DETAIL
1/16"=1'-0"

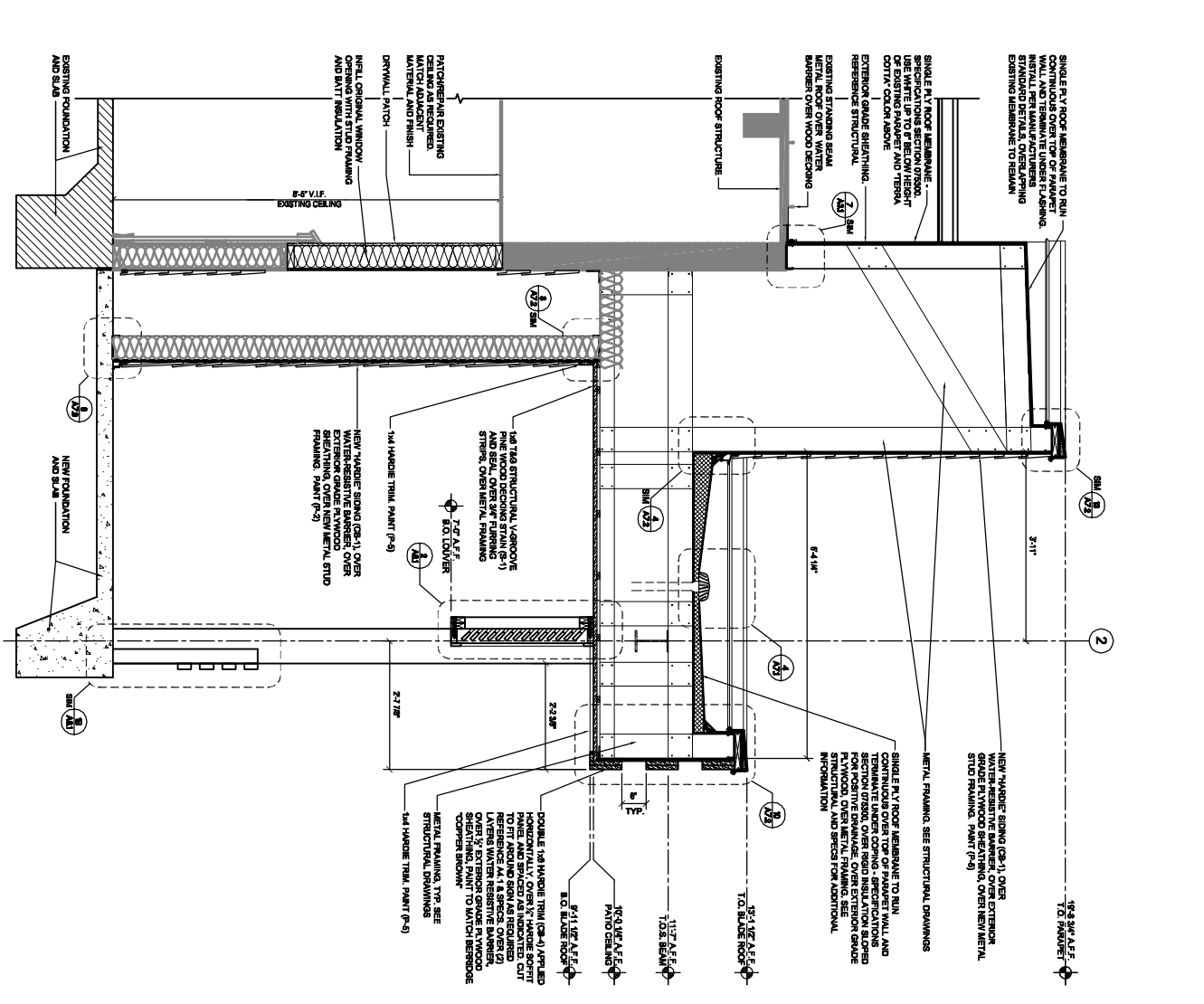


5 TRANSITION AT EXISTING ROOFING
3/4"=1'-0"

- A. REFER TO STRUCTURAL SHEETS FOR STRUCTURAL COMPONENTS AND CONNECTIONS. ALL STEEL CONNECTIONS TO BE WELDED TO BE HOT DIPPED GALVANIZED STEEL. INCLUDE IN STEEL BID FOR THE ROOF PAVEMENT.
- B. REFER TO EXTERIOR ELEVATIONS FOR EXTERIOR FINISHES.
- C. ALL CEILING, DOOR AND WINDOW HEAD HEIGHTS ARE SHOWN FOR REFERENCE ONLY. CONTRACTOR TO VERIFY EXISTING CONDITIONS AND VERIFY ROOM BRANDS INCORPORATION CONSTRUCTION DRAWINGS.
- D. TRIM DOOR AND WINDOW HEADS TO BE 3/4" OVER THE FINISH CEILING AND WINDOW HEADS TO BE 3/4" OVER THE FINISH WINDOW HEADS.
- E. REFER TO SPECIFICATIONS SECTION G16.01 FOR ADDITIONAL INFORMATION. COLOURS INDICATED ON SELECTION SHEET SHALL BE USED AS BEYOND. REFER TO SPECIFICATIONS SECTION G16.01 FOR ADDITIONAL INFORMATION. COLOURS INDICATED ON SELECTION SHEET SHALL BE USED AS BEYOND. REFER TO SPECIFICATIONS SECTION G16.01 FOR ADDITIONAL INFORMATION.



1 WALL SECTION @ MAIN ENTRY
3/4"=1'-0"



2 WALL SECTION @ SIDING
3/4"=1'-0"