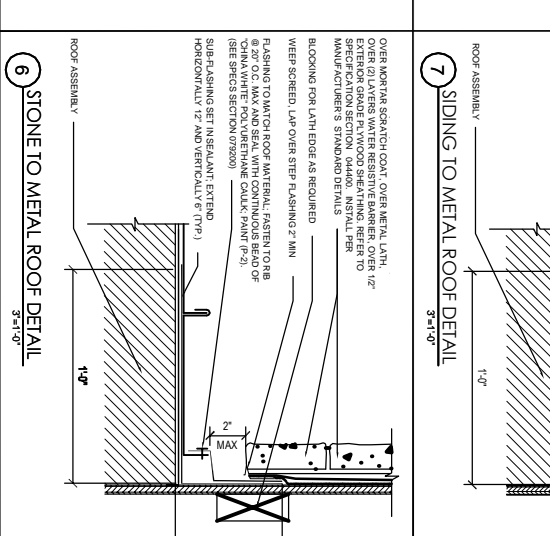
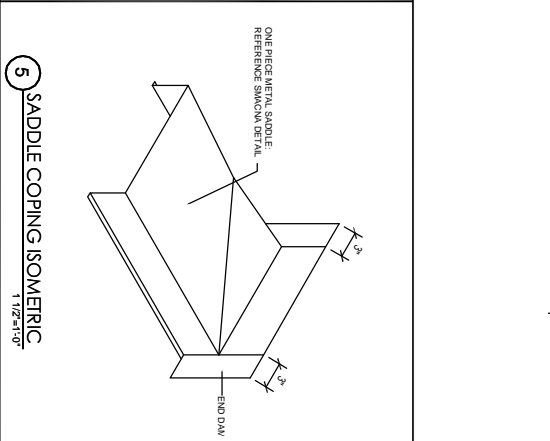
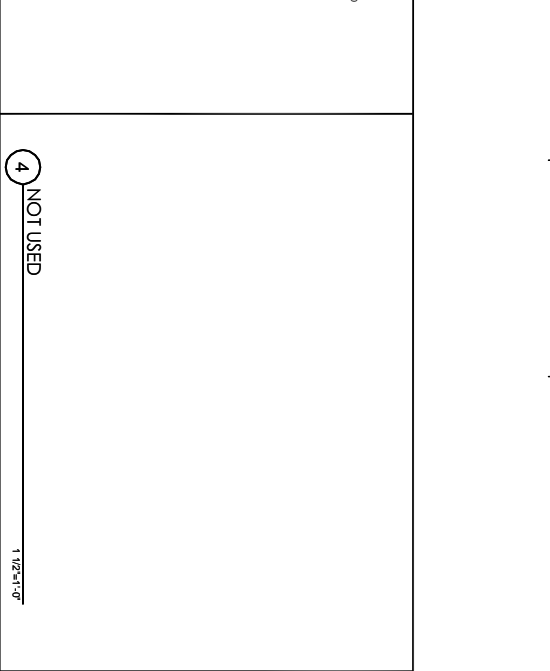
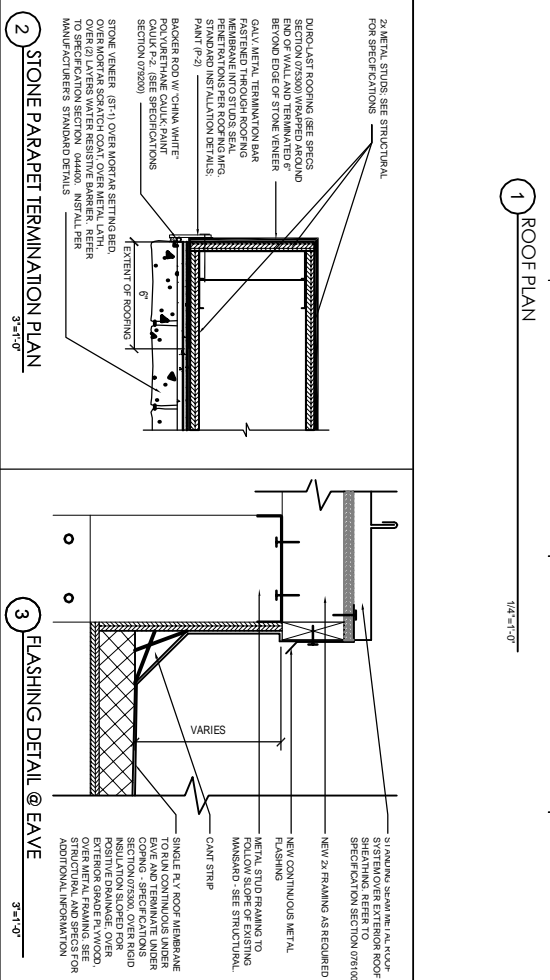
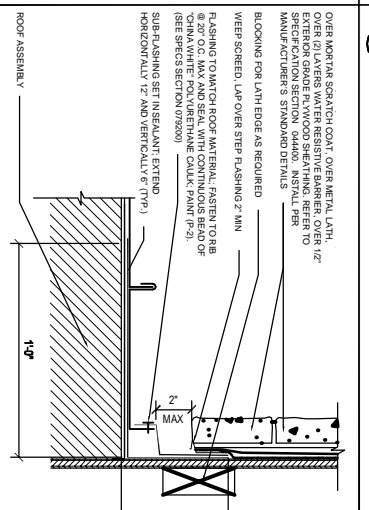
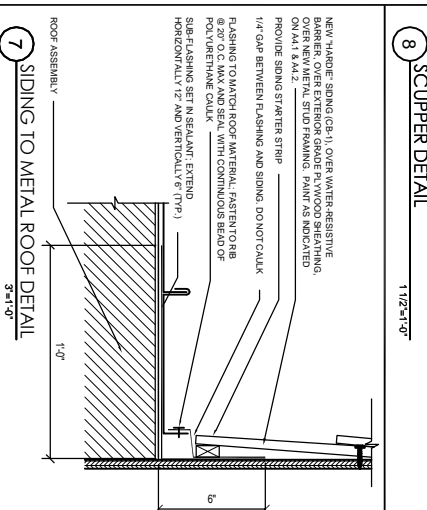
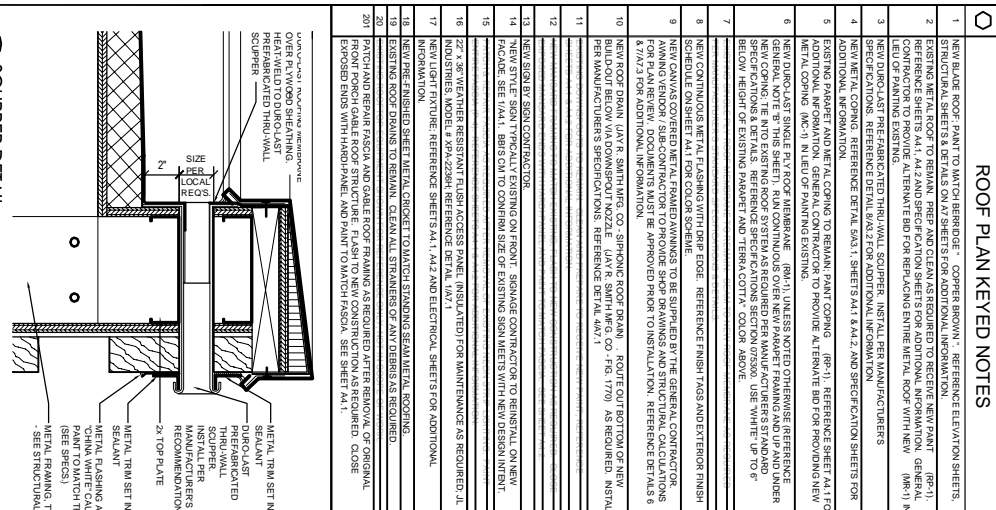


- ROOF PLAN KEYED NOTES**
- NEW BASE ROOF PAINT TO MATCH EXISTING. COOPER BROWN. REFER TO ELEVATION SHEETS.
 - STRUCTURAL SHEETS & DETAILS ON SHEETS FOR ADDITIONAL INFORMATION.
 - EXISTING METAL ROOF TO REMAIN. REPAIR AND CLEAN AS REQUIRED TO RECEIVE NEW PAINT (SP-1). REFER TO ELEVATION SHEETS FOR ADDITIONAL INFORMATION.
 - REFER TO ELEVATION SHEETS FOR ADDITIONAL INFORMATION.
 - EXISTING METAL ROOF TO REMAIN. REPAIR AND CLEAN AS REQUIRED TO RECEIVE NEW PAINT (SP-1). REFER TO ELEVATION SHEETS FOR ADDITIONAL INFORMATION.
 - REFER TO ELEVATION SHEETS FOR ADDITIONAL INFORMATION.
 - REFER TO ELEVATION SHEETS FOR ADDITIONAL INFORMATION.
 - REFER TO ELEVATION SHEETS FOR ADDITIONAL INFORMATION.
 - REFER TO ELEVATION SHEETS FOR ADDITIONAL INFORMATION.
 - REFER TO ELEVATION SHEETS FOR ADDITIONAL INFORMATION.
 - REFER TO ELEVATION SHEETS FOR ADDITIONAL INFORMATION.
 - REFER TO ELEVATION SHEETS FOR ADDITIONAL INFORMATION.
 - REFER TO ELEVATION SHEETS FOR ADDITIONAL INFORMATION.
 - REFER TO ELEVATION SHEETS FOR ADDITIONAL INFORMATION.
 - REFER TO ELEVATION SHEETS FOR ADDITIONAL INFORMATION.
 - REFER TO ELEVATION SHEETS FOR ADDITIONAL INFORMATION.
 - REFER TO ELEVATION SHEETS FOR ADDITIONAL INFORMATION.
 - REFER TO ELEVATION SHEETS FOR ADDITIONAL INFORMATION.
 - REFER TO ELEVATION SHEETS FOR ADDITIONAL INFORMATION.
 - REFER TO ELEVATION SHEETS FOR ADDITIONAL INFORMATION.
 - REFER TO ELEVATION SHEETS FOR ADDITIONAL INFORMATION.
 - REFER TO ELEVATION SHEETS FOR ADDITIONAL INFORMATION.
 - REFER TO ELEVATION SHEETS FOR ADDITIONAL INFORMATION.
 - REFER TO ELEVATION SHEETS FOR ADDITIONAL INFORMATION.



<p>OUTBACK STEAKHOUSE</p>	<p>PROJECT: 1549-125 3652 CINCINNATI, OH (KENWOOD) 8240 MONTGOMERY ROAD</p>	<p>Michael J. DeVere Architect 111 One Hill One North Canton, OH 44702 (330) 791-7211 October 30, 2019</p>	<table border="1"> <thead> <tr> <th>REVISION</th> <th>REMARKS</th> <th>BY</th> <th>DAT</th> </tr> </thead> <tbody> <tr> <td> </td> <td> </td> <td> </td> <td> </td> </tr> </tbody> </table>	REVISION	REMARKS	BY	DAT				
	REVISION	REMARKS	BY	DAT							
<p>A3.1</p> <p>01/11/2016 3652</p> <p>SHEET NUMBER</p>	<p>PROJECT: 1549-125</p> <p>T.M. M.L.D. 3652</p>	<p>111 One Hill One North Canton, OH 44702 (330) 791-7211 October 30, 2019</p>									