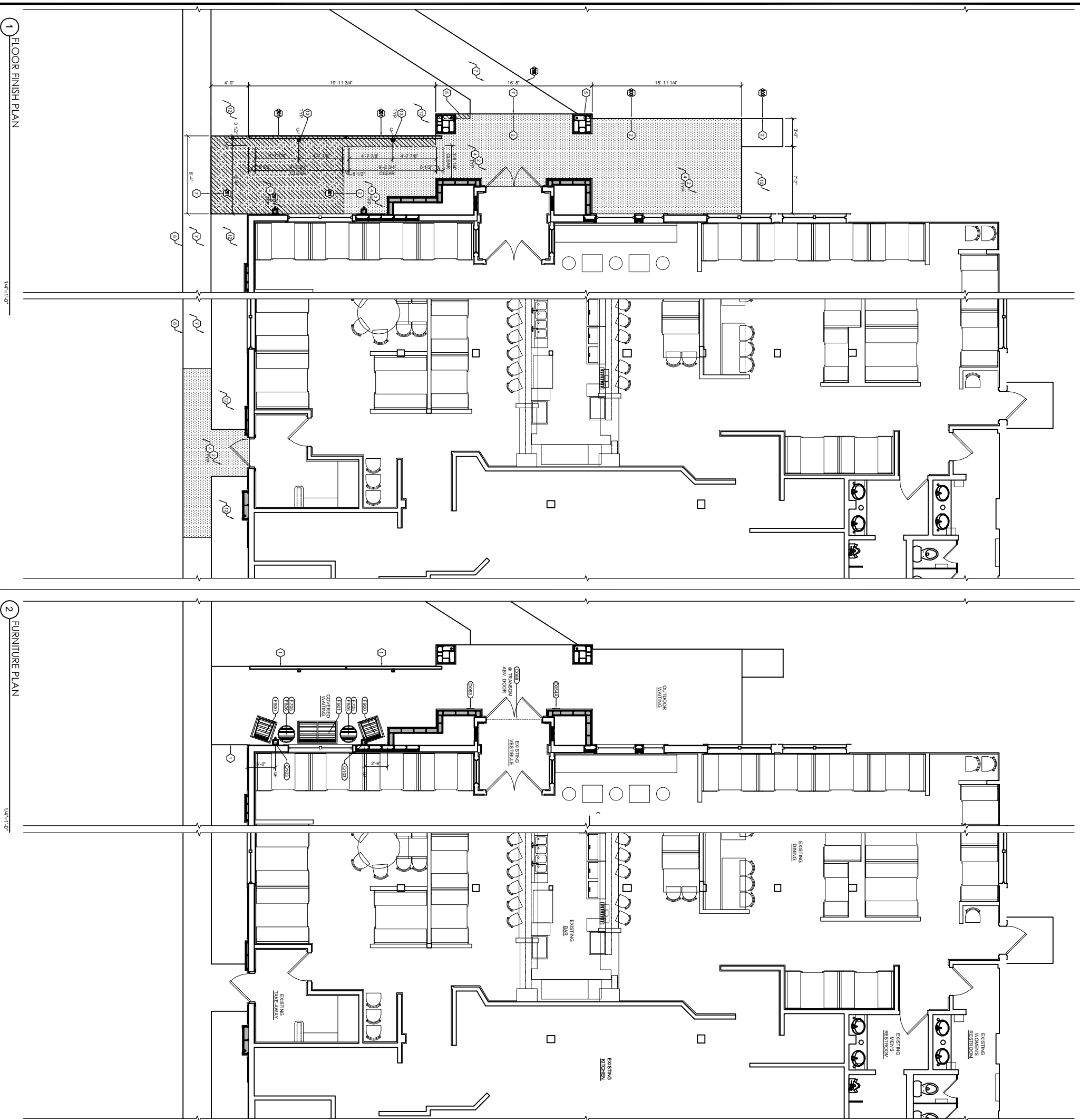


1 FLOOR FINISH PLAN

1/4"=1'-0"

2 FURNITURE PLAN

1/4"=1'-0"



- FLOOR FINISH & FURNITURE KEYS NOTES**
- A. REFER TO EXTERIOR ELEVATIONS FOR FINISH SCHEDULE.
  - B. ALL FURNITURE TO BE SUPPLIED BY OS AND TO BE RECEIVED AND INSTALLED BY OS.

1. NEW WOODSKALING AT POCH ATTACHED TO VERTICAL COLUMNS AND INTERMEDIATE SUPPORT POSTS. REFERENCE DETAIL 108.1 FROM ADDITIONAL INFORMATION.
2. EXISTING CONCRETE SLAB TO REMAIN. ALL EXISTING SINKS TO HAVE BEEN REWORKED. AN INDEX SHEET TO HORIZONTAL AND VERTICAL SURFACES OF EXISTING SLAB. REFERENCE FINISH SCHEDULE ON SHEET A41 FOR ADDITIONAL INFORMATION.
3. EXISTING SBRK CONCRETE SLAB TO REMAIN. CONCRETE DRESSING (SC-02) OVER EXISTING CONCRETE FOR 2" MINIMUM THICKNESS.
4. ASB NEW CONCRETE INFILL UNDER NEW PLASTER BUILD-OUTS AS REQUIRED. REFERENCE STRUCTURAL PLANS FOR ADDITIONAL INFORMATION.
5. EXISTING SBRK CONCRETE POSITIVE DRAINAGE.
6. EXISTING SBRK CONCRETE POSITIVE DRAINAGE.
7. EXISTING SBRK CONCRETE POSITIVE DRAINAGE.
8. EXISTING SBRK CONCRETE POSITIVE DRAINAGE.
9. EXISTING CURB RAMP TO REMAIN. FIELD VERTS SLOPE DOES NOT EXCEED 8.33% (1:12) SLOPE AFTER REMOVAL OF SPRA-CRTE. NOT BY OS OWN AND ARCHITECT IF DISCREPANCIES EXIST.
10. EXISTING SBRK CONCRETE POSITIVE DRAINAGE.
11. EXISTING SBRK CONCRETE POSITIVE DRAINAGE.
12. EXISTING SBRK CONCRETE POSITIVE DRAINAGE.
13. NEW 1" BRACKET AT EACH SIDE OF INTERMEDIATE POSTS. REFERENCE STRUCTURAL SHEETS FOR ADDITIONAL INFORMATION.
14. EXISTING SBRK CONCRETE POSITIVE DRAINAGE.
15. EXISTING SBRK CONCRETE POSITIVE DRAINAGE.
16. EXISTING SBRK CONCRETE POSITIVE DRAINAGE.
17. EXISTING SBRK CONCRETE POSITIVE DRAINAGE.
18. EXISTING SBRK CONCRETE POSITIVE DRAINAGE.
19. EXISTING SBRK CONCRETE POSITIVE DRAINAGE.
20. EXISTING SBRK CONCRETE POSITIVE DRAINAGE.
21. EXISTING SBRK CONCRETE POSITIVE DRAINAGE.
22. EXISTING SBRK CONCRETE POSITIVE DRAINAGE.
23. EXISTING SBRK CONCRETE POSITIVE DRAINAGE.
24. EXISTING SBRK CONCRETE POSITIVE DRAINAGE.
25. EXISTING SBRK CONCRETE POSITIVE DRAINAGE.
26. EXISTING SBRK CONCRETE POSITIVE DRAINAGE.
27. EXISTING SBRK CONCRETE POSITIVE DRAINAGE.
28. EXISTING SBRK CONCRETE POSITIVE DRAINAGE.
29. EXISTING SBRK CONCRETE POSITIVE DRAINAGE.
30. EXISTING SBRK CONCRETE POSITIVE DRAINAGE.
31. EXISTING SBRK CONCRETE POSITIVE DRAINAGE.
32. EXISTING SBRK CONCRETE POSITIVE DRAINAGE.
33. EXISTING SBRK CONCRETE POSITIVE DRAINAGE.
34. EXISTING SBRK CONCRETE POSITIVE DRAINAGE.
35. EXISTING SBRK CONCRETE POSITIVE DRAINAGE.
36. EXISTING SBRK CONCRETE POSITIVE DRAINAGE.
37. EXISTING SBRK CONCRETE POSITIVE DRAINAGE.
38. EXISTING SBRK CONCRETE POSITIVE DRAINAGE.
39. EXISTING SBRK CONCRETE POSITIVE DRAINAGE.
40. EXISTING SBRK CONCRETE POSITIVE DRAINAGE.
41. EXISTING SBRK CONCRETE POSITIVE DRAINAGE.
42. EXISTING SBRK CONCRETE POSITIVE DRAINAGE.
43. EXISTING SBRK CONCRETE POSITIVE DRAINAGE.
44. EXISTING SBRK CONCRETE POSITIVE DRAINAGE.
45. EXISTING SBRK CONCRETE POSITIVE DRAINAGE.
46. EXISTING SBRK CONCRETE POSITIVE DRAINAGE.
47. EXISTING SBRK CONCRETE POSITIVE DRAINAGE.
48. EXISTING SBRK CONCRETE POSITIVE DRAINAGE.
49. EXISTING SBRK CONCRETE POSITIVE DRAINAGE.
50. EXISTING SBRK CONCRETE POSITIVE DRAINAGE.
51. EXISTING SBRK CONCRETE POSITIVE DRAINAGE.
52. EXISTING SBRK CONCRETE POSITIVE DRAINAGE.
53. EXISTING SBRK CONCRETE POSITIVE DRAINAGE.
54. EXISTING SBRK CONCRETE POSITIVE DRAINAGE.
55. EXISTING SBRK CONCRETE POSITIVE DRAINAGE.
56. EXISTING SBRK CONCRETE POSITIVE DRAINAGE.
57. EXISTING SBRK CONCRETE POSITIVE DRAINAGE.
58. EXISTING SBRK CONCRETE POSITIVE DRAINAGE.
59. EXISTING SBRK CONCRETE POSITIVE DRAINAGE.
60. EXISTING SBRK CONCRETE POSITIVE DRAINAGE.
61. EXISTING SBRK CONCRETE POSITIVE DRAINAGE.
62. EXISTING SBRK CONCRETE POSITIVE DRAINAGE.
63. EXISTING SBRK CONCRETE POSITIVE DRAINAGE.
64. EXISTING SBRK CONCRETE POSITIVE DRAINAGE.
65. EXISTING SBRK CONCRETE POSITIVE DRAINAGE.
66. EXISTING SBRK CONCRETE POSITIVE DRAINAGE.
67. EXISTING SBRK CONCRETE POSITIVE DRAINAGE.
68. EXISTING SBRK CONCRETE POSITIVE DRAINAGE.
69. EXISTING SBRK CONCRETE POSITIVE DRAINAGE.
70. EXISTING SBRK CONCRETE POSITIVE DRAINAGE.
71. EXISTING SBRK CONCRETE POSITIVE DRAINAGE.
72. EXISTING SBRK CONCRETE POSITIVE DRAINAGE.
73. EXISTING SBRK CONCRETE POSITIVE DRAINAGE.
74. EXISTING SBRK CONCRETE POSITIVE DRAINAGE.
75. EXISTING SBRK CONCRETE POSITIVE DRAINAGE.
76. EXISTING SBRK CONCRETE POSITIVE DRAINAGE.
77. EXISTING SBRK CONCRETE POSITIVE DRAINAGE.
78. EXISTING SBRK CONCRETE POSITIVE DRAINAGE.
79. EXISTING SBRK CONCRETE POSITIVE DRAINAGE.
80. EXISTING SBRK CONCRETE POSITIVE DRAINAGE.
81. EXISTING SBRK CONCRETE POSITIVE DRAINAGE.
82. EXISTING SBRK CONCRETE POSITIVE DRAINAGE.
83. EXISTING SBRK CONCRETE POSITIVE DRAINAGE.
84. EXISTING SBRK CONCRETE POSITIVE DRAINAGE.
85. EXISTING SBRK CONCRETE POSITIVE DRAINAGE.
86. EXISTING SBRK CONCRETE POSITIVE DRAINAGE.
87. EXISTING SBRK CONCRETE POSITIVE DRAINAGE.
88. EXISTING SBRK CONCRETE POSITIVE DRAINAGE.
89. EXISTING SBRK CONCRETE POSITIVE DRAINAGE.
90. EXISTING SBRK CONCRETE POSITIVE DRAINAGE.
91. EXISTING SBRK CONCRETE POSITIVE DRAINAGE.
92. EXISTING SBRK CONCRETE POSITIVE DRAINAGE.
93. EXISTING SBRK CONCRETE POSITIVE DRAINAGE.
94. EXISTING SBRK CONCRETE POSITIVE DRAINAGE.
95. EXISTING SBRK CONCRETE POSITIVE DRAINAGE.
96. EXISTING SBRK CONCRETE POSITIVE DRAINAGE.
97. EXISTING SBRK CONCRETE POSITIVE DRAINAGE.
98. EXISTING SBRK CONCRETE POSITIVE DRAINAGE.
99. EXISTING SBRK CONCRETE POSITIVE DRAINAGE.
100. EXISTING SBRK CONCRETE POSITIVE DRAINAGE.

**EQUIPMENT SCHEDULE**

QTY	DESCRIPTION	REMARKS
2	PANED END TABLE WITH SLAT TOP	WOODMANS
2	PANED TABLE BASE FOR 30X36 AND 36X36	WOODMANS
2	PANED END TABLE BASE	WOODMANS
2	PANED TABLE TOP 36X36	WOODMANS
2	PANED TABLE TOP 30X36	WOODMANS
2	PANED TABLE TOP 36X36 W/ UMBRELLA HOLE	WOODMANS
2	PANED TABLE TOP 30X36	WOODMANS
2	PANED LOUNGE CHAIR	WOODMANS
2	PANED LOUNGE LOVE SEAT	WOODMANS
2	PANED DINING CHAIR	WOODMANS
1	SEAT HOURS OF OPERATION	EXISTING TO BE REUSED
1	SIGN BRACKET FOR CERTIFICATES	EXISTING TO BE REUSED
1	SIGN PROPRIETOR	EXISTING TO BE REUSED
1	SIGN NO. ALCOHOL BEYOND THIS POINT	NATIONAL DISBURSERS. COORDINATE LOCATION WITH OWNER. OS.
1	PANED STORAGE CABINET (30"W x 14"D)	SEA MANUFACTURING GROUP
1	FRANTER BOX (4' 0")	CWC
1	FRANTER BOX (4' 0")	CWC
1	FRANTER BOX (3' 6")	CWC
1	FRANTER BOX (CUSTOM 3' 6")	CWC
1	PANED SPEAKERS (WALL MOUNTED)	MOCO MEDIA. QUANTITY & PLACEMENT PER WOOD MEDIUM.
1	PANED HEATER	TBD

**FURNITURE COUNT**

EXISTING	REMOVED
TABLE TOPS (DINING)	41
TABLE TOPS (BAR)	7
TABLE TOPS (PAVLO)	0
TABLE TOTAL	48
SEATING TOTAL	228

**CONCRETE LEGEND**

	NEW 4" CONCRETE DRESSING (SC-02) OVER EXISTING SLAB. ALL EXISTING SPRA-CRTE TO HAVE BEEN REMOVED. SEE REFERENCE #2 THIS SHEET.
	NEW 4" CONCRETE DRESSING (SC-02) OVER NEW CONCRETE SLAB. SEE REFERENCE #2 THIS SHEET.

PROJECT: 15-9-125  
**3652 CINCINNATI, OH (KENWOOD)**  
 8240 MONTGOMERY ROAD

**Michael J. DeVere**  
 Architect  
 111 One Hill One  
 Troy, Ohio 45326-1702  
 513.241.1717

OUTBACK STEAKHOUSE

DATE: 01/11/2016  
 SHEET NUMBER: A1.2

REVISION: 1M SERIES  
 TM  
 MLD  
 3652

BY: DAT