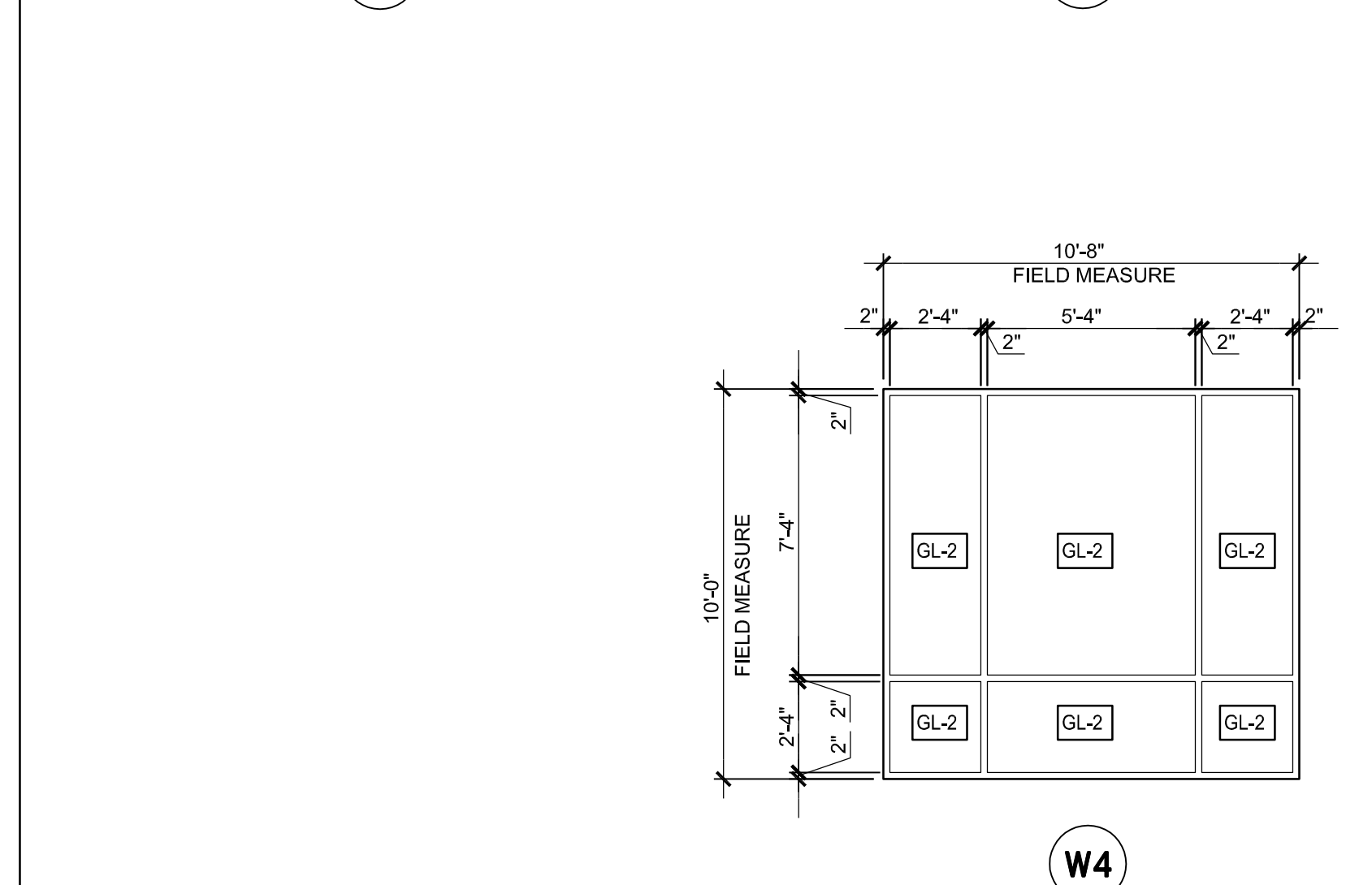
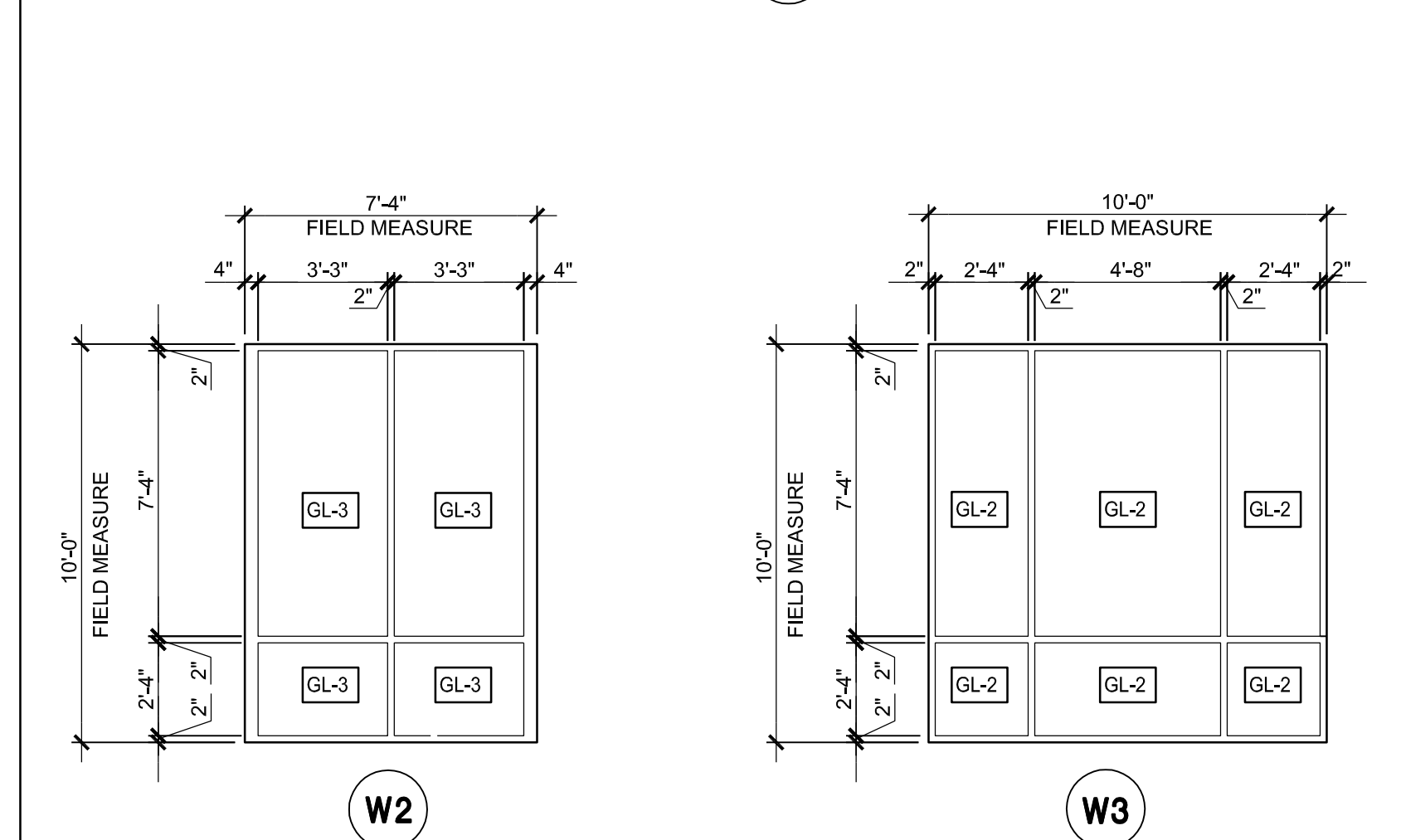
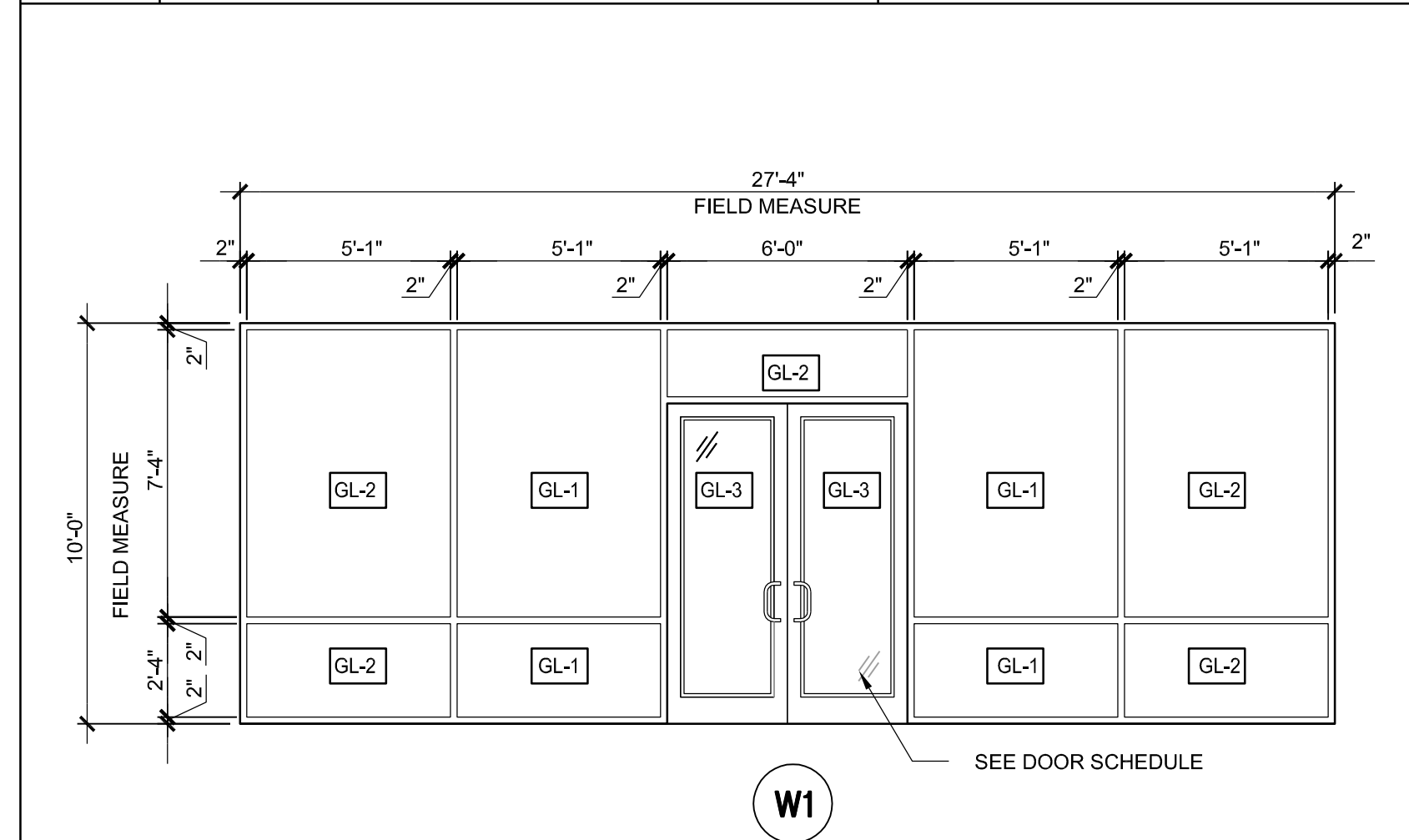


Window Schedule								
WINDOW MARK	GLAZING			FRAME				
	DESCRIPTION	SIZE	GLAZING TYPE	MATERIAL	FINISH	DETAILS		
						HEAD	JAMB	SILL
W1	STOREFRONT	SEE ELEV BELOW	SEE ELEV BELOW	SEE ELEV	CLR ANOD	3 / 6.03	2 / 6.03	1 / 6.03
W2	STOREFRONT					3 / 6.03	2 / 6.03	1 / 6.03
W3	STOREFRONT					3 / 6.03	2 / 6.03	1 / 6.03

Glazing Schedule		
WINDOW MARK	DESCRIPTION	TYPE
GL-1	1-INCH CLEAR, LOW-E TEMPERED INSULATED GLASS	SOLARBAN 60 OR EQUAL
GL-2	1-INCH CLEAR, LOW-E ANNEALED, INSULATED GLASS	SOLARBAN 60 OR EQUAL
GL-3	1/4-INCH CLEAR, TEMPERED GLASS	SOLARBAN 60 OR EQUAL

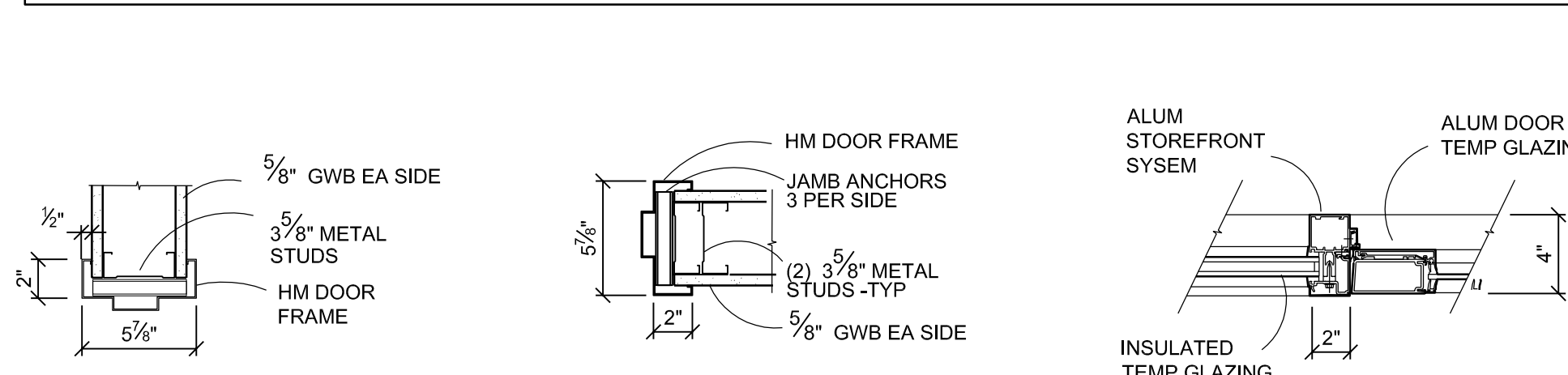


WINDOW ELEVATIONS
SCALE: 1/4" = 1'-0"

Room Finish Material Schedule												
RM No.	AREA	FLOOR		BASE		WALLS			CEILING			
		MATL	COMMENT	MATL	COMMENT	NORTH	EAST	SOUTH	WEST	MATL	COMMENT	
100	VESTIBULE	CONC	FINISH BY TENANT	-	-	-	-	-	-	GLASS ONLY	ACT	SEE DWG A3.01
101	SHOWROOM	CONC	FINISH BY TENANT	-	-	-	-	-	-	PAINT READY	ACT	SEE DWG A3.01
102	VALUE ZONE	CONC	FINISH BY TENANT	-	-	-	-	-	-	-	ACT	SEE DWG A3.01
103	CORRIDOR	CONC	FINISH BY TENANT	-	-	-	-	-	-	-	ACT	SEE DWG A3.01
104	WOMEN	T-1	-	TB-1	-	PT-1	PT-1	PT-1	PT-1	-	ACT	SEE DWG A3.01
105	MEN	T-1	-	TB-1	-	PT-1	PT-1	PT-1	PT-1	-	ACT	SEE DWG A3.01
106	FILES / STORAGE	CONC	FINISH BY TENANT	-	-	-	-	-	-	-	ACT	SEE DWG A3.01

Interior Finishes	
CARPET (CPT) PROVIDED BY TENANT	VINYL COMPOSITION TILE (VCT) PROVIDED BY TENANT
FLOOR TILE (T-1) DESCRIPTION: MFR: DISTRIBUTOR: COLOR: SIZE: "STOREFLOORS" MIRABELLA BEIGE 12" x 12" x 3/8"	PAINT FINISH (PT-1) MFR: SHERWIN WILLIAMS SW6078 "REALISTIC BEIGE" EGG SHELL (WALLS)
GROUT: LATICRETE OR EQUAL SANDED No.317 "MARBLE BEIGE"	PAINT FINISH (PT-2) MFR: SHERWIN WILLIAMS SW6078 "REALISTIC BEIGE" SEMI-GLOSS (DOORS & FRAMES)
TILE BASE (TB-1) MFR: "STOREFLOORS" MIRABELLA 6" COVE COLOR: MATCH ADJACENT TILE FLOOR (T-1)	PAINT FINISH (PT-3) MFR: SHERWIN WILLIAMS SELECTED BY ARCHITECT MATCH EXTERIOR BRICK SEMI-GLOSS
FIBERGLASS REINF PANEL (FRP-1) MFR: MARLITE PEBBLED COLOR: P 100 "WHITE" PVC TRIM / ACCESSORIES TO INCLUDE: INSIDE CORNERS: M350 OUTSIDE CORNERS: M360 PANEL SPLICES: M365 EXPOSED EDGES: M370 CORNER GUARDS: M961	ACOUSTIC CEILING TILE (ACT) REFER TO DWG A3.01

- Finish Schedule General Notes**
- SEE FLOOR PLAN A2.01 FOR SPECIFIC FINISH LOCATIONS AND LAYOUTS.
 - ALL FINISH WORK, MATERIALS AND PRODUCTS SHALL COMPLY WITH OBC CHAPTER 8, ACCESSIBILITY STANDARDS 2010 (Effective 4/15/12) STANDARDS FOR ACCESSIBLE DESIGN ICC A117.1 (2009)
 - PREPARE ALL SUBSTRATE SURFACES TO RECEIVE FINISH MATERIALS, IN STRICT ACCORDANCE WITH MANUFACTURERS RECOMMENDATIONS.
 - ALL ADHESIVES AND CLEANING/PREPARATORY MATERIALS SHALL CONFORM TO MANUFACTURER'S RECOMMENDATIONS.
 - REVEALS, AND DRYWALL EXPANSION JOINTS SHALL BE PAINTED TO MATCH ADJACENT WALL SURFACE UNLESS NOTED OTHERWISE.
 - BOTTOM SOFFITS / BULKHEADS SHALL BE PAINTED WHITE. FACE OF BULKHEAD / SOFFITS SHALL BE PAINTED TO MATCH ADJACENT WALL SURFACE UNO.
 - PAINT DOORS AND FRAMES, ACCESS PANELS AND FRAMES - 1 COAT PRIMER AND 2 COATS FINISH
 - PAINT LADDER & RAILS, GUARDS AND ANY MISCELLANEOUS EXPOSED METAL - 1 COAT PRIMER AND 2 COATS FINISH
 - PAINT WALLS - 1 COAT PRIMER AND 2 COATS FINISH
 - SEE REFLECTED CEILING PLAN FOR ADDITIONAL CEILING FINISH NOTES
 - SEE REFLECTED CEILING PLAN FOR GRID AND PANEL STARTING POINTS
 - EXTERIOR EXPOSURE - AT LOCATIONS OF EXTERIOR/OPEN AIR EXPOSURE (ENCLOSED OR UNENCLOSED), PROV ARMSTRONG G-90 GRID, OR EQUIV. AND EXTERIOR RATED VINYL FACED GYPSUM CLG PANELS. COMPLY W/ MFR RECOMMENDATIONS, CONFIRM CAPACITY TO SUPPORT INSULATION.
 - TOP OF UNFINISHED TILE BASE, OR WAINSCOT TO BE FINISHED WITH METAL SCHLUETER TRIM - PROV SAMPLES OF STD COLORS/FINISHES
 - AT JOINTS IN FLOORING MATERIALS OF DIFFERING THICKNESS, PROVIDE LEVELING MATERIAL FOR FLUSH TRANSITION. ELIMINATE TRIP HAZARDS. ALTERNATIVELY, PROVIDE TRANSITION STRIPS, AND/OR THRESHOLDS, COMPLY WITH APPLICABLE ACCESSIBILITY STANDARDS
 - AT EDGES OF TILE FLOORING, OR JOINTS TO OTHER FLOORING MATERIALS, PROVIDE METAL SCHLUETER TRIM - PROV SAMPLES OF STD COLORS/FINISHES
 - PROVIDE CRACK ISOLATION MEMBRANE AT ALL TILE FLOOR INSTALLATIONS. PROVIDE WATERPROOFING MEMBRANE AT ALL ELEVATED SLAB TILE INSTALLATIONS. COMPLY WITH TCNA RECOMMENDATIONS
 - ALL WINDOW TREATMENTS SHALL BE PURCHASED & INSTALLED BY THE TENANT
 - BLINDS/CURTAINS AT WINDOWS - WHERE SPECIFIED, PROVIDE CONCEALED BLOCKING/REINFORCING IN CEILINGS FOR SUPPORT. COORDINATE VALENCE/TRIM TO CONCEAL TRACK
 - COMPLY WITH MFG RECOMMENDATIONS FOR REQUIRED CONTROL JOINTS IN GYPSUM BOARD WALLS AND CEILINGS. SEE FINISH NOTES.
 - OBC CH 8 INTERIOR WALL/CEILING FLAME SPREAD FINISH REQUIREMENTS - TABLE 803.9 - "M" USE GROUP:
 - EXIT ENCL & PASSAGEWAYS- CLASS "B" FINISH RATING
 - CORRIDORS - CLASS "C" FINISH RATING
 - ROOMS AND ENCLOSED SPACES - CLASS "C" FINISH RATING
 - OBC CH8 INTERIOR FLOOR FINISHES - COMPLY WITH OBC 804.1 - SEE 804.1.1 - "M" USE GROUP:
 - EXIT ENCLOSURES, EXIT PASSAGEWAYS AND CORRIDORS - IF SPRINKLERED PER EXCEPTION, COMPLY WITH DOC FF-1 "pill test"
 - ALL OTHER ROOMS AND SPACES - COMPLY WITH DOC FF-1 "pill test" (CPSC 16 CFR, Part 1630)

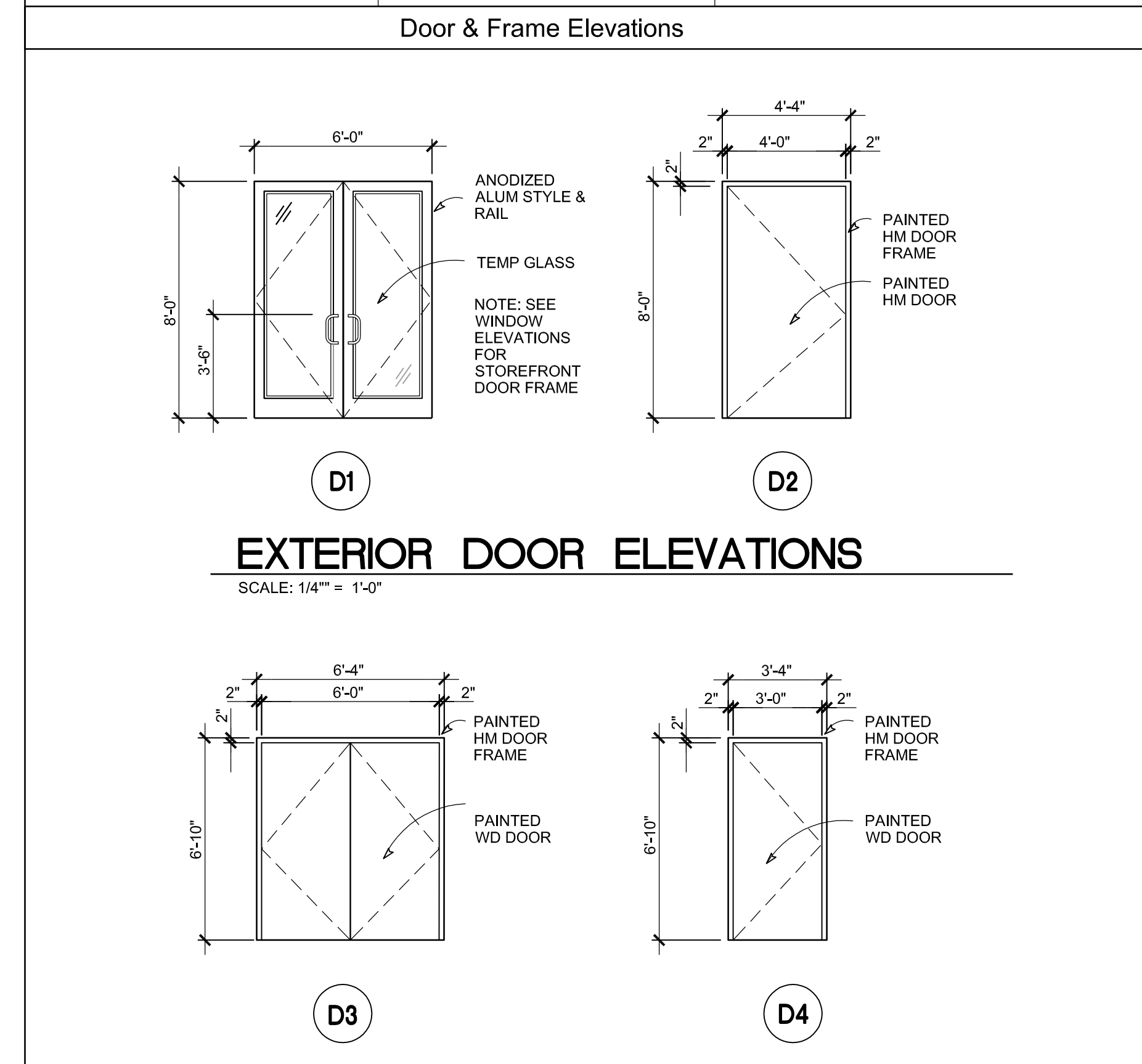


H1 HEAD DETAIL SCALE: 1/4" = 1'-0"
J1 JAMB DETAIL SCALE: 1/4" = 1'-0"
J2 JAMB DETAIL SCALE: 1/4" = 1'-0"

Door and Frame Schedule													
DR No.	ELEV	DOORS			FRAMES					FIRE RATING	HDWR SET No.	NOTES	
		MATL	FINISH	SIZE	ELEV	MATL	FINISH	HEAD	JAMB				
101A	D1	AL/CL	CLR ANOD	(2) 3'-0" x 8'-0"	1 1/2"	D1	AL	ANOD	SIM J2 / 4.01	J2 / 4.01	-	HW-1	-
101B	D1	AL/CL	CLR ANOD	(2) 3'-0" x 8'-0"	1 1/2"	D1	AL	ANOD	SIM J2 / 4.01	J2 / 4.01	-	HW-5	-
103	D2	HM	PT	4'-0" x 8'-0"	1 1/2"	D2	HM	PT	SIM 3 / 6.03	SIM 2 / 6.03	-	HW-2	P-2 INTERIOR / P-3 EXTERIOR
104	D2	WD	PT	3'-0" x 6'-8"	1 1/2"	D2	HM	PT	H1 / 4.01	J1 / 4.01	-	HW-4	-
105	D2	WD	PT	3'-0" x 6'-8"	1 1/2"	D2	HM	PT	H1 / 4.01	J1 / 4.01	-	HW-4	-
106	D3	WD	PT	(2) 3'-0" x 6'-8"	1 1/2"	D3	HM	PT	H1 / 4.01	J1 / 4.01	-	HW-3	-

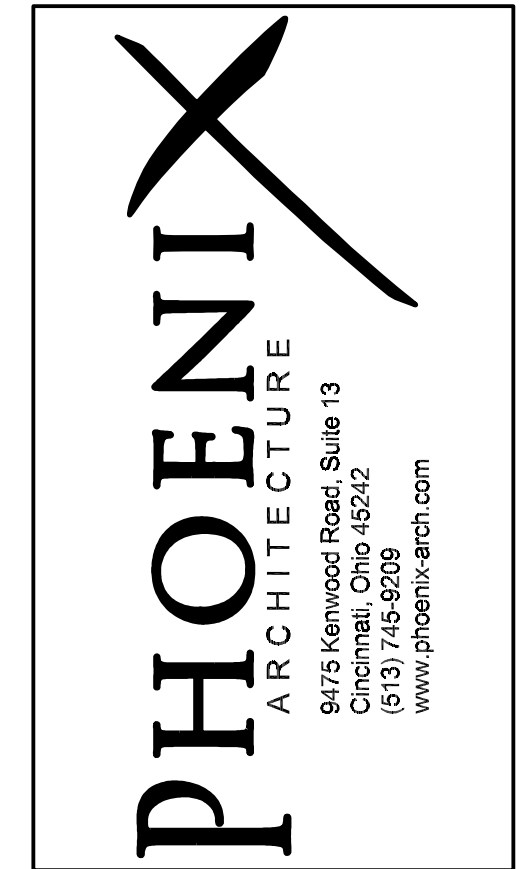
- Door and Hardware Notes**
- OBC 1008 DOOR HARDWARE - ALL EGRESS DOOR HARDWARE SHALL BE READILY OPENABLE FROM THE EGRESS SIDE WITHOUT THE USE OF A KEY OR SPECIAL KNOWLEDGE OR EFFORT
 - OBC 1008.1.8.1 HARDWARE - OPERABLE DOOR HARDWARE SHALL BE LEVER STYLE UNO- ACCESSIBLE DESIGN - ACCESSIBILITY COMPLIANT - SEE OBC CH 11
 - HINGES - 1/2 PAIR AT DOORS TYPICAL. COMPLY WITH MFG RECOMMENDATIONS FOR WGT/ CAPACITY PER HINGE
 - CLOSERS - PROVIDE BALL BRG HINGES AT ALL DOORS W/ CLOSERS. CLOSERS COMPLY W/ OBC ACCESSIBILITY STANDARDS
 - OBC 1008.1.6 THRESHOLDS - MAX .5 INCH - COMPLY WITH CH 11
 - UNDERCUT - ANY REQD UNDERCUT DOORS - COORDINATE WHERE REQD. & EXACT OPNG DIMENSION WITH MECH EGR. COMPLY WITH DOOR MFG RECOMMENDATIONS FOR ALLOWED MODIFICATIONS. MAINTAIN FIRE RATINGS WHERE APPLICABLE
 - EXTERIOR DOORS - PROVIDE SEALED ALUM THRESHOLD, WEATHERSTRIPPING, DRIP FLASHING AT HEAD, LATCH GUARD
 - PROVIDE DOUBLE STUD HEADER AND JAMBS AT ALL DOOR FRAMES - TYPICAL
 - ALL GLAZING IN DOORS, & ADJACENT TO DOORS TO BE TEMPERED OR LAMINATED SAFETY GLASS

Door Hardware Sets		
HARDWARE SET No.1 (HW-1) 1 PAIR * BALL BEARING PIVOTS 1 EACH EXIT LOCKSET W/ KEYED EXTERIOR AND (1) LEVER RELEASE INTERIOR (SGL MOTION) 1 SET * PULL HANDLE EXTERIOR AND FULL WIDTH PUSH BAR INTERIOR 1 EACH * CLOSER - ADJUST PER ADA PRESSURE AND CLOSING DURATION 1 EACH THRESHOLD 1 SET WEATHER STRIPPING	HARDWARE SET No.3 (HW-3) 3 PAIR BALL BEARING HINGES 1 EACH LOCKSET WITH STOREROOM FUNCTION AND LEVER HANDLES 1 PAIR DUMMY LEVER HANDLES TO MATCH LOCKSET 1 SET FLUSH BOLTS 1 EACH WALL STOP	HARDWARE SPECIFICATIONS: LOCKSET: • FALCON T-SERIES EXTRA HEAVY DUTY/ GRADE 1 CYLINDRICAL LEVER LOCKS WITH ROSE • LEVER STYLE: "AVALON" • FINISH: 626 SATIN CHROME EXIT ALARM • DETEX MODEL No. EAX-300 OR EQUAL • NOTE: GC TO REVIEW FUNCTION & FEATURES WITH TENANT FOR APPROVAL PRIOR TO INSTALLATION.
HARDWARE SET No.2 (HW-2) 2 PAIR BALL BEARING HINGES 1 EACH LOCKSET WITH ENTRY / OFFICE FUNCTION AND LEVER HANDLES 1 EACH LATCH GUARD 1 EACH CLOSER 1 EACH THRESHOLD 1 SET WEATHER STRIPPING	HARDWARE SET No.4 (HW-4) 1.5 PAIR BALL BEARING HINGES 1 EACH LOCKSET WITH PRIVACY FUNCTION AND LEVER HANDLES 1 EACH WALL STOP	HARDWARE SET No.5 (HW-5) SIM AS HW-1: OMIT LOCKSET



EXTERIOR DOOR ELEVATIONS SCALE: 1/4" = 1'-0"
INTERIOR DOOR ELEVATIONS SCALE: 1/4" = 1'-0"

PRELIMINARY
NOT FOR CONSTRUCTION
THIS DOCUMENT IS ISSUED FOR DESIGN REVIEW ONLY



PROPOSED BUILDING FOR
MATTRESSFIRM
7906 MONTGOMERY ROAD
CINCINNATI OHIO 45236

ISSUE	DATE
PRELIMINARY ISSUE	11 DEC 2015
TENANT REVIEW	15 DEC 2015
OWNER PLAN REVISIONS	27 JAN 2016
PUD SUBMITTAL	02 FEB 2016
FINAL TENANT DRAWINGS	15 FEB 2016

COPYRIGHT:
PHOENIX ARCHITECTURE, LLC
PROJ MANAGER: JW / TM
JOB NO. 008827.01

SCHEDULES
A4.01