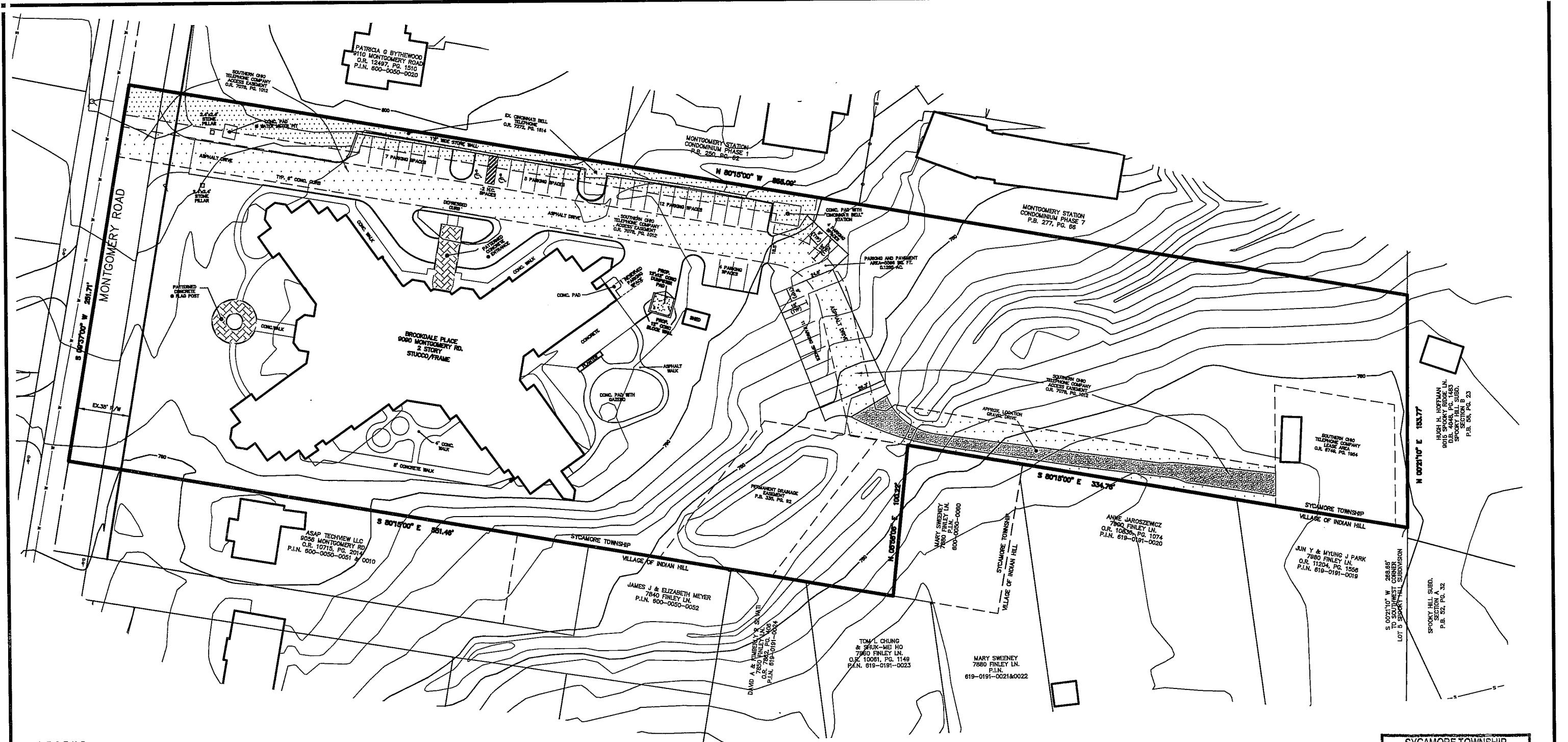
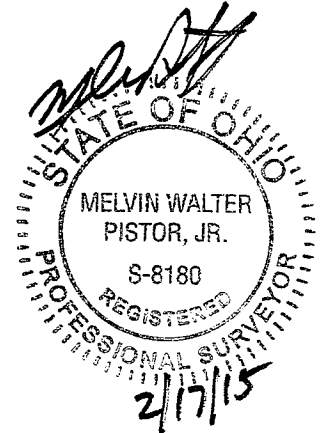
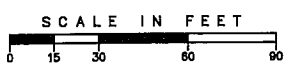


N:\land projects\BP14\1411801\1411801-TOP-00.dwg, 2/17/2015 10:18:48 AM, mel, 1:2.1503



- LEGEND**
EXISTING FEATURES
- MANHOLE
 - CATCH BASIN/DRAIN
 - GUTTER INLET
 - CLEAN OUT
 - DOWNSPOUT
 - UTILITY POLE
 - ELECTRIC BOX
 - TELEPHONE BOX
 - CABLE TV BOX
 - LIGHT POLE/LAMP POST
 - TRAFFIC SIGNAL/BOX
 - FIRE HYDRANT
 - WATER VALVE/METER
 - SPRINKLER/VALVE
 - GAS VALVE/METER
 - SIGN/SIGN POST
 - FLAG POLE
 - MAIL BOX
 - PARKING METER
 - GUARD POST
 - HANDICAPPED PARKING
 - S— SANITARY SEWER
 - ST— STORM SEWER
 - W— WATER LINE
 - G— GAS LINE
 - E— ELECTRIC LINE
 - T— TELEPHONE LINE
 - OH— OVERHEAD UTILITY LINE
 - X— FENCE LINE
- LEGEND**
MONUMENTS
(UNLESS NOTED OTHERWISE)
- EX. 5/8" IRON PIN
 - ⋈ EX. SPIKE
 - ⋈ EX. NOTCH
 - ★ EX. NAIL
 - △ EX. STONE
 - EX. CONC. MON.
 - X— EX. FENCE LINE
 - 5/8" IRON PIN SET
 - 1" IRON PIN SET
 - ⋈ SPIKE SET
 - ⋈ NOTCH SET
 - ★ NAIL SET
 - CONC. MON. SET
- NOTES**
OCCUPATION IN GENERAL FITS SURVEY EXCEPT AS SHOWN.
MONUMENTS GENERALLY IN GOOD CONDITION UNLESS NOTED OTHERWISE.
SURVEY BASED ON FIELD EVIDENCE AND DEEDS & PLATS OF RECORD NOTED HEREON.
EASEMENTS SHOWN HEREON WERE DISCOVERED DURING THE COURSE OF RESEARCH OF PUBLIC RECORDS AND MAY NOT COMPRISE ALL OF THE EASEMENTS AND/OR ENCUMBRANCES AFFECTING THE SUBJECT PROPERTY.
BEARINGS BASED ON D.R. 7076, PG. 1001 HAMILTON COUNTY, OHIO RECORDER'S OFFICE.



SYCAMORE TOWNSHIP
PLANNING & ZONING
FEB 17 2015
RECEIVED

BROOKDALE PLACE AT KENWOOD
9090 MONTGOMERY ROAD
PARCEL No. 600-0050-0046
4.2798 ACRES
SECTION 3, TOWN 4, RANGE 1
SYCAMORE TOWNSHIP, HAMILTON COUNTY, OHIO

Revision	By	Date
ADDED PARKING DIMS.	MP	2-17-15
ADDED DUMPSTER	MP	2-17-15

mSP McGill Smith Punshon, Inc.
3700 Park 42 Drive • Suite 1908
Cincinnati, Ohio 45241-2097
Tel 513.759.0004 • Fax 513.563.7099
www.mcgillsmithpunshon.com

Engineers • Architects • Surveyors • Landscape Architects • Planners

Drawn by: MWP | Date: 5-14-14 | Project No.: 1411801 | Sheet No.: 1/1
Project Mgr.: MWP | Scale: 1"=30' | Plots D.B.: 1411801.TBC
CAD: 8P14\1411801-TOP-00 | X-Ref. | N/A | File No.: 14118.01