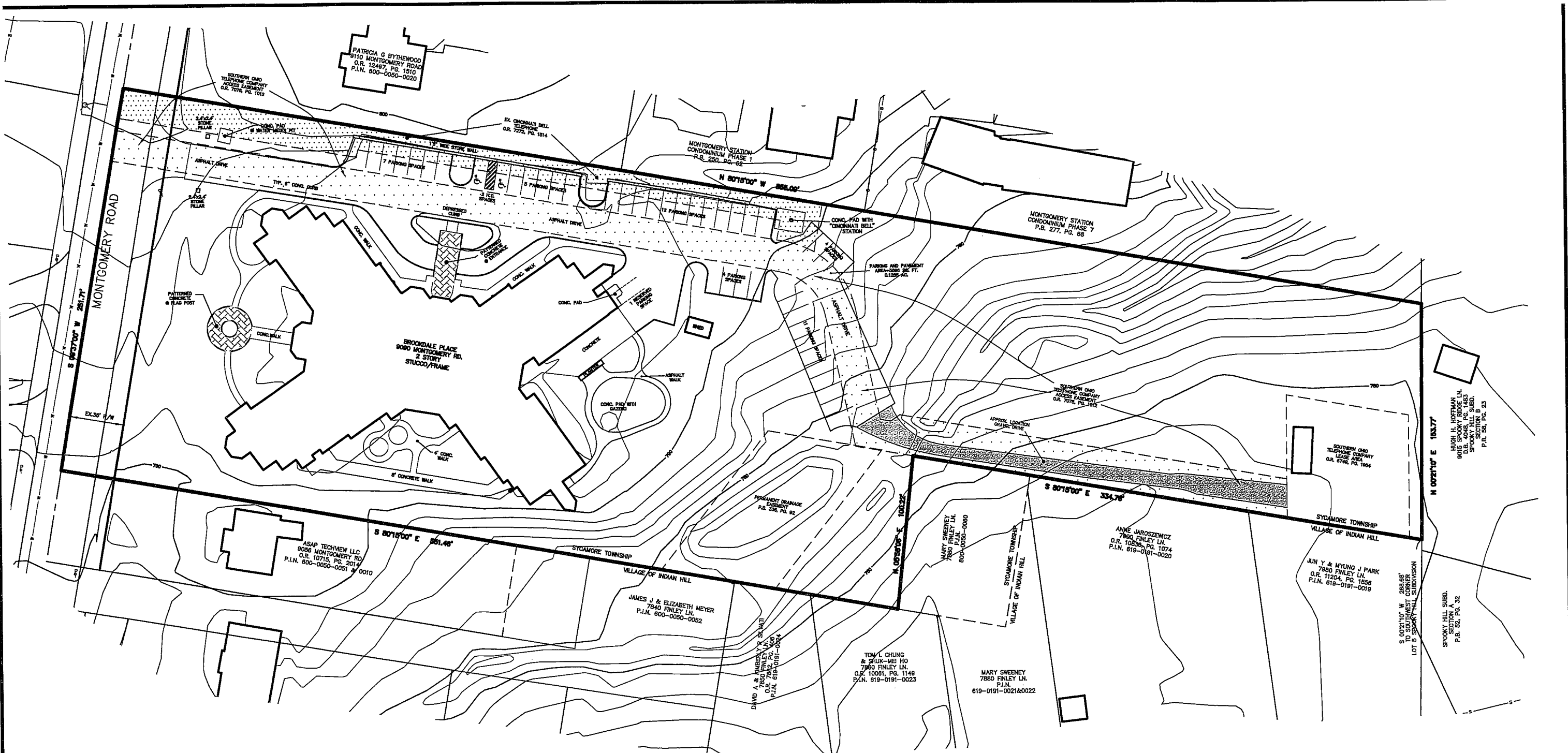


N:\land projects\BP14\1411801\1411801-TOP-00.dwg, 2/5/2015 9:34:35 AM, mel, 1:2.1503



- LEGEND**
EXISTING FEATURES
- MANHOLE
 - CATCH BASIN/DRAIN
 - GUTTER INLET
 - CLEAN OUT
 - DOWNSPOUT
 - UTILITY POLE
 - ELECTRIC BOX
 - TELEPHONE BOX
 - CABLE TV BOX
 - LIGHT POLE/LAMP POST
 - TRAFFIC SIGNAL/BOX
 - FIRE HYDRANT
 - WATER VALVE/METER
 - SPRINKLER/VALVE
 - GAS VALVE/METER
 - SIGN/SIGN POST
 - FLAG POLE
 - MAIL BOX
 - PARKING METER
 - GUARD POST
 - HANDICAPPED PARKING
 - SANITARY SEWER
 - STORM SEWER
 - WATER LINE
 - GAS LINE
 - ELECTRIC LINE
 - TELEPHONE LINE
 - OVERHEAD UTILITY LINE
 - FENCE LINE

- LEGEND**
MONUMENTS
 (UNLESS NOTED OTHERWISE)
- EX. 5/8" IRON PIN
 - ⌵ EX. SPIKE
 - ⊕ EX. NOTCH
 - ★ EX. NAIL
 - △ EX. STONE
 - EX. CONC. MON.
 - EX. FENCE LINE
 - 5/8" IRON PIN SET
 - 1" IRON PIN SET
 - ⌵ SPIKE SET
 - ⊕ NOTCH SET
 - ★ NAIL SET
 - CONC. MON. SET

NOTES

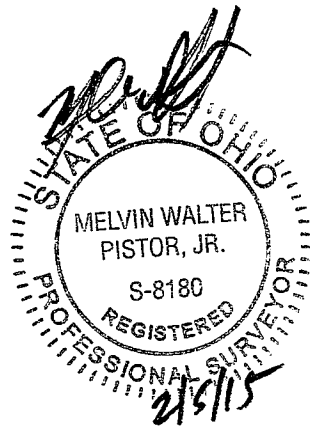
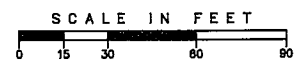
OCCUPATION IN GENERAL FITS SURVEY EXCEPT AS SHOWN.

MONUMENTS GENERALLY IN GOOD CONDITION UNLESS NOTED OTHERWISE.

SURVEY BASED ON FIELD EVIDENCE AND DEEDS & PLATS OF RECORD NOTED HEREON.

EASEMENTS SHOWN HEREON WERE DISCOVERED DURING THE COURSE OF RESEARCH OF PUBLIC RECORDS AND MAY NOT COMPRISE ALL OF THE EASEMENTS AND/OR ENCUMBRANCES AFFECTING THE SUBJECT PROPERTY.

BEARINGS BASED ON O.R. 7078, PG. 1001 HAMILTON COUNTY, OHIO RECORDER'S OFFICE.



SYCAMORE TOWNSHIP
 PLANNING & ZONING
FEB 11 2015
RECEIVED

BROOKDALE PLACE AT KENWOOD
 9090 MONTGOMERY ROAD
 PARCEL No. 600-0050-0046
 4.2798 ACRES
 SECTION 3, TOWN 4, RANGE 1
 SYCAMORE TOWNSHIP, HAMILTON COUNTY, OHIO

Revision	By	Date

MSP **McGill Smith Punshon, Inc.**
 3700 Park 42 Drive • Suite 190B
 Cincinnati, Ohio 45241-2097
 Tel 513.759.0004 • Fax 513.563.7099
 www.mcgillsmithpunshon.com

Engineers • Architects • Surveyors • Landscape Architects • Planners

Drawn By: MWP | Date: 5-16-14 | Project No.: 14118.01 | Sheet No.: 1/1
 Project Mgr.: MWP | Scale: 1"=30' | Points D.B.: 1411801.TBC
 CAD: BP14\1411801-TOP-00 | X-Ref.: N/A | File No.: 14118.01