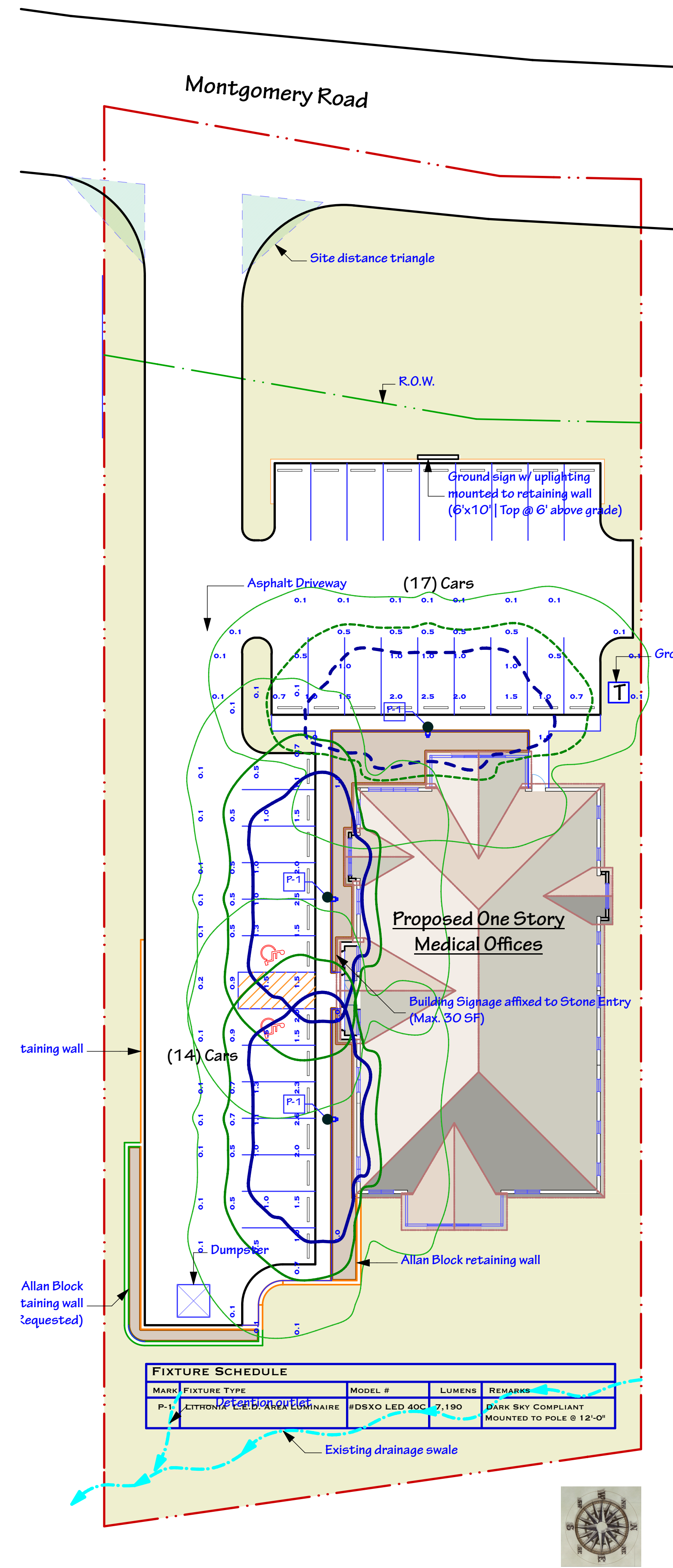


ARCHICAD MASTERTEMPLATE (TM) BY BOBROW CONSULTING GROUP - ALL RIGHTS RESERVED - WWW.BOBROW.COM | WWW.ARCHICADTEMPLATE.COM



D-Series Size 0 LED Area Luminaire

Specifications

Introduction: The modern styling of the D-Series is striking yet unobtrusive - making a bold progressive statement even as it blends seamlessly with its environment. The D-Series boasts the benefits of the latest in LED technology: a high-performance, high-efficiency luminaire. The outstanding photometric performance results in areas with excellent uniformity, greater pole spacing and lower component costs. In a field for reference to the 40W metal halide with equal energy output of 60,000 lumens, the D-Series provides 100,000 lumens.

Photometric Data

Beam Spread: 120°

Light Output: 7,190 lumens

Electrical Load: 100W

Performance Data

Light Output: 7,190 lumens

Beam Spread: 120°

Electrical Load: 100W

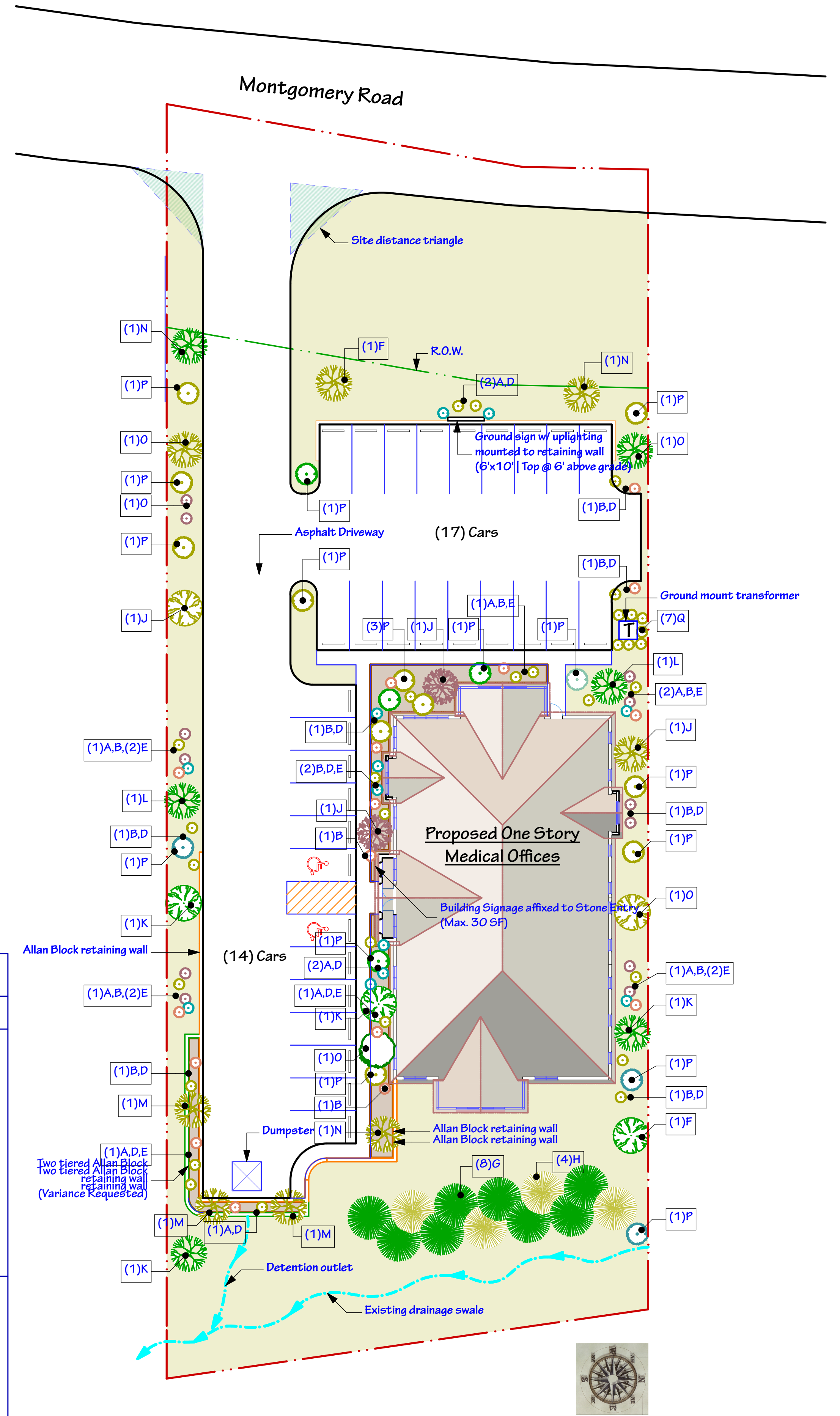
Landscape Schedule

Mark	Description	Size	Mark	Description	Size
A	Taxus Media	15" to 18"	J	Weeping Cherry	2 1/2" Caliper
B	Sandcherry Plum	(2) Gallon	K	Flowering Pear	2 1/2" Caliper
C	Stella Daylily	Clump	L	Dawn Redwood	2 1/2" Caliper
D	Blue Holly	(3) Gallon	M	River Birch Clump	6'-0" Height
E	Burning Bush	(2) Gallon	N	Sweet Gum	2 1/2" Caliper
F	"Autumn Blaze" Red Maple	2 1/2" Caliper	O	Red Oak	2 1/2" Caliper
G	Norway Spruce	6'-0" Height	P	Ornamental Grass Clump	4'-0" Height
H	Austrian Pine	6'-0" Height	Q	Upright Arborvitae	4'-0" Height

General Landscape Notes

- 1) Seed all disturbed construction areas not noted as "Sod"
- 2) Contractor responsible for ongoing maintenance & watering of installed landscaping & grass until established, at which time shall become the continued responsibility of the Owner
- 3) Ornamental Grasses to be equal distribution of "Huron Sunrise", "Pink Pampas", & "Arabesque Silver Grass"
- 4) All heights, Caliper & Gallon sizes refer to size at time of installation

2 Photometric Plan
Scale: 1" = 20'



1 Landscape Plan
Scale: 1" = 20'

Consultant

STUDIO FOR Architecture

2227 UTICA ROAD
LEBANON, OHIO 45036
T: (513) 932-8080
F: (513) 932-8780
E: RICK@VIEWPOINTSTUDIO.COM

Professional Seal: RICK W. OTTO, Registered Professional Engineer, No. 6932

SYCAMORE TWP. DENTAL FACILITY

M K Dental Excellence

8784 MONTGOMERY ROAD
CINCINNATI, OHIO 45239

REVISIONS

MARK	DATE	DESCRIPTION
Δ	10/24	REV PER BLOG DEPT

Date: 9/21/14
Scale: AS NOTED

A|2.00
Plotted On: 9/21/14

Landscape & Photometrics