

- INDICATES PROPOSED FENCE
- INDICATES PROPOSED WATER SERVICE (CONFORM SIZE WITH CONTRACTOR)
- INDICATES PROPOSED FIRE SERVICE (CONFORM SIZE WITH CONTRACTOR)
- INDICATES PROPOSED DOMESTIC LINE SERVICE (CONFORM SIZE WITH CONTRACTOR)
- INDICATES PROPOSED GAS SERVICE (CONFORM SIZE WITH CONTRACTOR)
- INDICATES PROPOSED 6" SANITARY SEWER (PVC SPR-35 @ 2% MIN. SLOPE)
- INDICATES PROPOSED ASPHALT PAVEMENT (CONFORM PAVEMENT SECTION WITH OWNER)
- INDICATES PROPOSED ASPHALT PAVEMENT (NON-MEMBERS MUST BE CALLED DIRECTLY)

UTILITY INFORMATION shown on this plot prepared by Thomas Graham Associates, Inc. was obtained from existing records. It is the contractor's responsibility to verify their existence and location, and to contact the appropriate utility company for field locations.

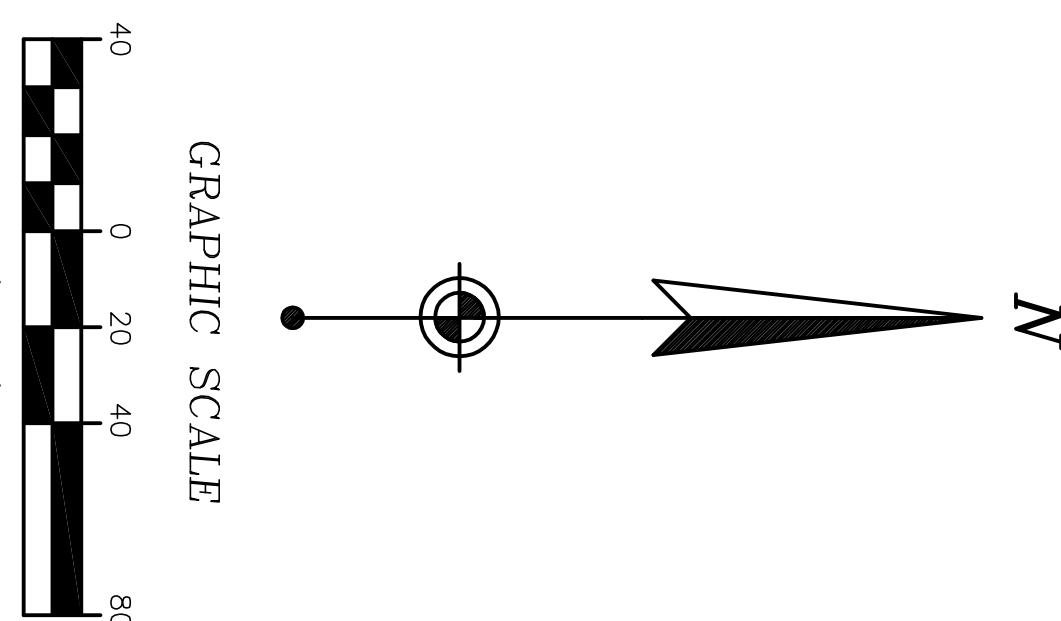
UNDERGROUND UTILITIES
 2 WORKING DAYS
 BEFORE YOU DIG
 OHIO UTILITIES PROTECTION SERVICE
 NON-MEMBERS MUST BE CALLED DIRECTLY
 PHONE: 1-800-362-2764

UTILITY INSTALLATION TABLE

UTILITY	TYPICAL DEPTH
GAS	36"
WATER	42"
ELECTRIC	30"
TELEPHONE	30"
CABLE TV	30"

SUMMARY TABLE

PARCEL A	PARCEL B
OFFICE SPACE	1,200 S.F.
STORAGE SPACE	89,200 S.F.
PROPOSED ASPHALT & CONCRETE	49,217 S.F.
TOTAL IMPERVIOUS AREA =	139,617 S.F.
I.S.R. = 139,617 S.F./223,429 S.F. * 100 = 62.48%	
PARKING REQUIRED PER ZONING	5 SPACES
OFFICE	9 SPACES
STORAGE	2 SPACES
STORAGE LOADING	14 SPACES
PARKING PROVIDED	25 SPACES
TOTAL IMPERVIOUS AREA = 83,256 S.F.	
I.S.R. = 83,256 S.F./150,107 S.F. * 100 = 55.46%	
PARKING PROVIDED	25 SPACES



VICINITY MAP
NOT TO SCALE

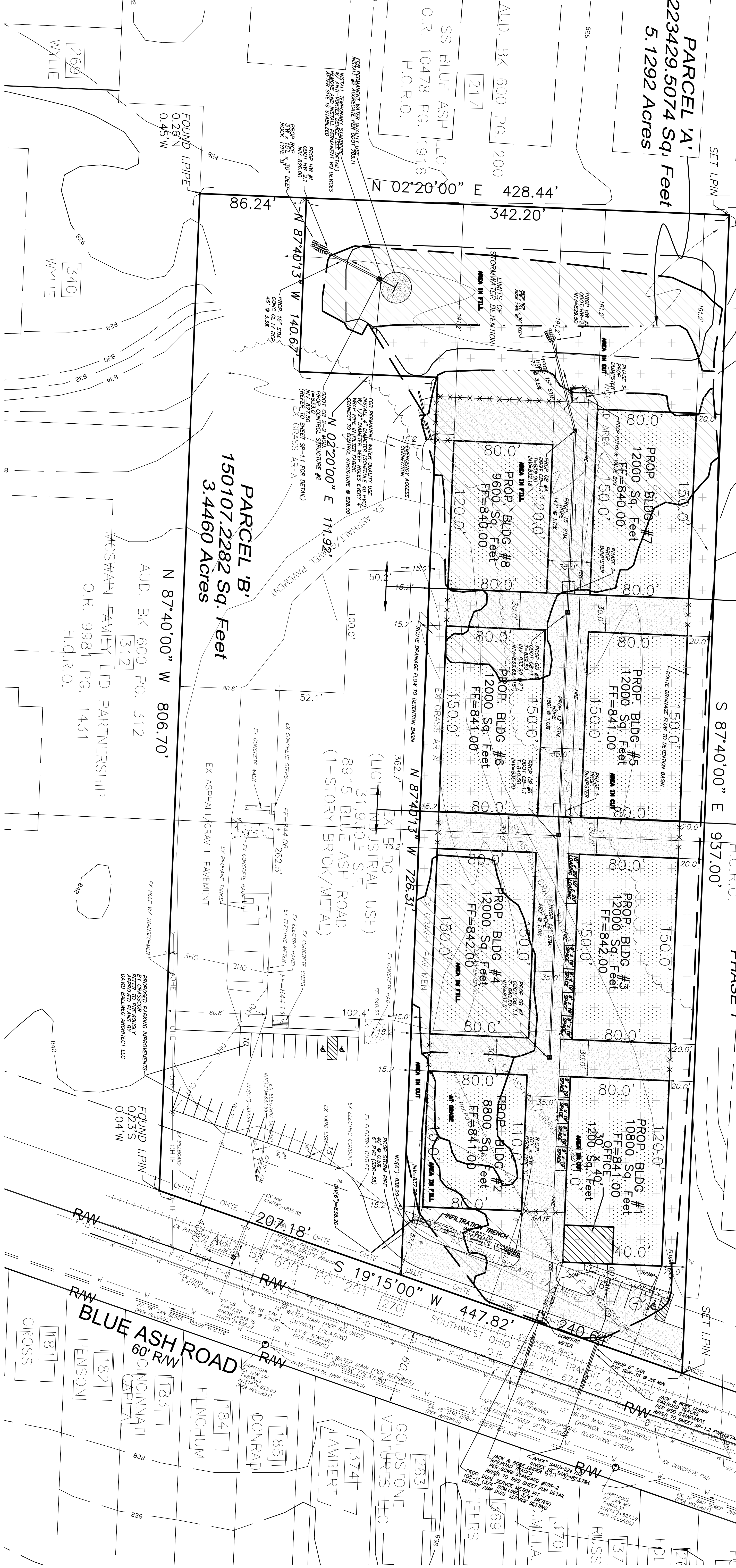
OWNERS
 ROBERT J. KRUIDIECK, PETER KLEKAMP, & ALEX SULFSTED
 6257 SPRINGDALE ROAD
 CINCINNATI, OHIO 45247

APPLICANT
 ROBERT J. KRUIDIECK
 6257 SPRINGDALE ROAD
 CINCINNATI, OHIO 45247

EASTERN SHEET METAL HOLDING COMPANY INC.
 O.R. 10374 PG. 1251
 H.C.R.O. PHASE 1
 S 87°40'00" E 937.00'

PHASE 2
 O.R. 10374 PG. 1251
 H.C.R.O. PHASE 2
 S 87°40'00" E 937.00'

PHASE 3
 O.R. 10374 PG. 1251
 H.C.R.O. PHASE 3
 S 87°40'00" E 937.00'



PROPOSED FEATURES

PROJECT: BLUE ASH SELF STORAGE
 ADDRESS: 8915 BLUE ASH ROAD
 SECTION 14, TOWN 4, ENTIRE RANGE 1
 SYCAMORE TOWNSHIP
 HAMILTON COUNTY, OHIO

ACAD FILENAME: 7806_BASE.DWG

thomas graham ASSOCIATES, INC.
 • Engineers
 • Surveyors
 803 Compton Road
 Cincinnati, Ohio 45231
 513-521-4760
 Fax # 521-2439

Date: NOV. 2, 2012
 Scale: 1" = 40'
 Job No: 7806
 Revisions:

No.	Date