

KEYNOTES

1. SLOPES IN ACCESSIBLE AREAS SHALL BE PER ADA REQUIREMENTS 2% MAX CROSS-SLOPES AND 5% MAX RUNNING SLOPE ALONG ROUTES.
2% ANY DIRECTION IN ACCESSIBLE SPACE OR AISLE.
 2. EROSION AND SEDIMENT CONTROL SHALL BE ESTABLISHED AROUND THE PERIMETER OF THE SITE BEFORE ANY EARTH DISTURBING ACTIVITIES HAVE BEGUN. SPECIFICALLY, INLET PROTECTION SHOULD BE USED AS A TEMPORARY MEASURE AGAINST SILT WASH INTO CATCH BASINS UNTIL VEGETATIVE COVER CAN BE ESTABLISHED AND THE PERMANENT SLOPE HAS BEEN CONSTRUCTED.
- NOTE:
REMOVE ALL EXISTING TREES, SHRUBS AND LANDSCAPE MATERIALS UNLESS NOTED OTHERWISE. ADJUST ALL EXISTING MANHOLES, SEW VALVES, CLEAN OUTS, ETC. TO NEW GRADES AS NEEDED.

PROPOSED CONDITIONS LEGEND

- 841 ——— INDICATES EX. CONTOURS
- 841 ——— INDICATES PROPOSED CONTOURS
- 841.0 + INDICATES PROPOSED ASPHALT GRADES
- SF ——— INDICATES PROPOSED SILT FENCE (REFER TO SP-1.1 FOR DETAIL)
- IP ——— INLET PROTECTION (REFER TO SP-1.2 FOR DETAIL)
- IP ——— INDICATES PROPOSED DRAINAGE FLOW ROUTE
- IP ——— INDICATES PROPOSED CONSTRUCTION ENTRANCE (REFER TO SP-1.1 FOR DETAIL)
- CE ——— INDICATES PROPOSED ASPHALT PAVEMENT (CONFORM PAVEMENT SECTION WITH OWNER)

UTILITY INSTALLATION TABLE

UTILITY	TYPICAL DEPTH
GAS	36"
WATER	42"
ELECTRIC	30"
TELEPHONE	30"
CABLE TV	30"

IF CONFLICT OCCURS BETWEEN UTILITIES SHOWN ABOVE AND THE GRADY SYSTEMS INCLUDING SANITARY AND STORM SEWERS, THE CONTRACTOR IS TO ADJUST THE UTILITIES LISTED ABOVE AS NEEDED.

The utility information shown on this plan, prepared by Thomas Graham Associates, Inc., was obtained from existing records. It is the contractor's responsibility to verify their existence and location, and to contact the appropriate utility company for field locations.

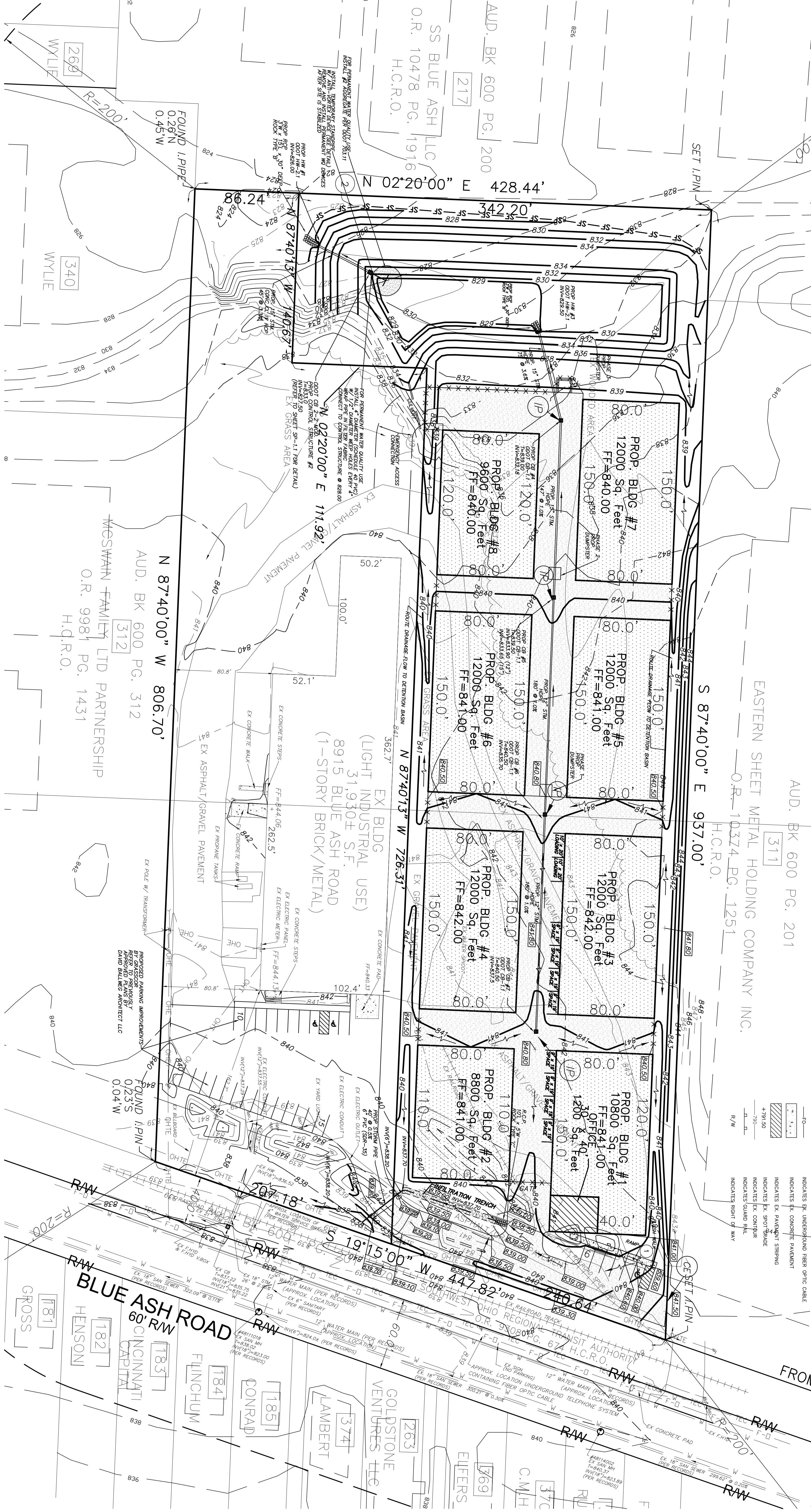
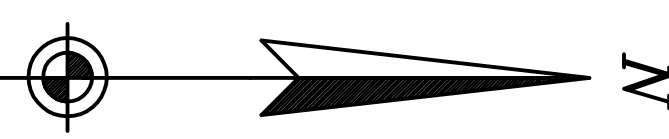
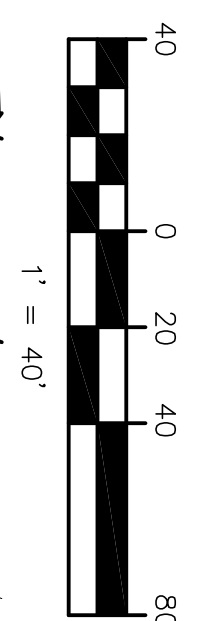
UNDERGROUND UTILITIES

2 WORKING DAYS BEFORE YOU DIG
PHONE: 1-800-362-2764
OHIO UTILITIES PROTECTION SERVICE
NON-MEMBERS MUST BE CALLED DIRECTLY

LEGEND

- INDICATES EX. GAS VALVE BOX
- INDICATES DEPRESSED CURB
- INDICATES METAL POST
- INDICATES EX. IRON PIN
- INDICATES EX. LIGHT POLE
- INDICATES EX. TEE CABLE AND ELEC. POLE
- INDICATES TELEPHONE AND ELECTRIC POLE
- INDICATES GUY POLE
- INDICATES EX. GUY WIRE
- INDICATES EX. SINGLE GRADE INLET
- INDICATES EX. INLET (2X2)
- INDICATES EX. FIRE HYDRANT
- INDICATES EX. FIRE DEPARTMENT CONNECTION
- INDICATES EX. WATER VALVE BOX
- INDICATES EX. WATER METER BOX
- INDICATES EX. FIRE DEPARTMENT VALVE
- INDICATES EX. POST INDICATOR VALVE
- INDICATES EX. UNDERGROUND WATER
- INDICATES EX. UNDERGROUND GAS
- INDICATES EX. OVERHEAD ELECTRIC WIRE
- INDICATES EX. OVERHEAD TELEPHONE, ELECTRIC, CABLE WIRE
- INDICATES EX. OVERHEAD TELEPHONE & ELECTRIC WIRE
- INDICATES EX. UNDERGROUND FIBER OPTIC CABLE
- INDICATES EX. CONCRETE PAVEMENT
- INDICATES EX. PAVEMENT STRING
- INDICATES EX. SPOT GRADE
- INDICATES EX. CONCRETE
- INDICATES GUARD RAIL
- INDICATES RIGHT OF WAY

GRAPHIC SCALE



PRELIMINARY GRADING PLAN

ADDRESS: 8915 BLUE ASH ROAD
SECTION 14, TOWN 4, ENTIRE RANGE 1
SYCAMORE TOWNSHIP
HAMILTON COUNTY, OHIO

thomas graham ASSOCIATES, INC.
• Engineers
• Surveyors
803 Compton Road
Cincinnati, Ohio 45221
513-521-4760
Fax # 521-2439

Date:	NOV. 2, 2012
Scale:	1" = 40'
Job No.:	7806
Revisions:	
No.:	
Date:	