

THE DOCUMENT, AND THE IDEAS AND DESIGNS INCORPORATED HEREIN, IS THE PROPERTY OF K4 ARCHITECTURE, L.L.C. AND IS NOT TO BE USED, IN WHOLE OR IN PART, FOR ANY OTHER PROJECT WITHOUT THE WRITTEN AUTHORIZATION OF K4 ARCHITECTURE, L.L.C. COPYRIGHT 2009. K4 ARCHITECTURE, L.L.C. ALL RIGHTS RESERVED.  
 File Location: X:\2010\Projects\2010-05-2055-FFB-Redstone of Kenwood-ShopArch.dwg Plot Date: Apr. 12, 2011 11:51am

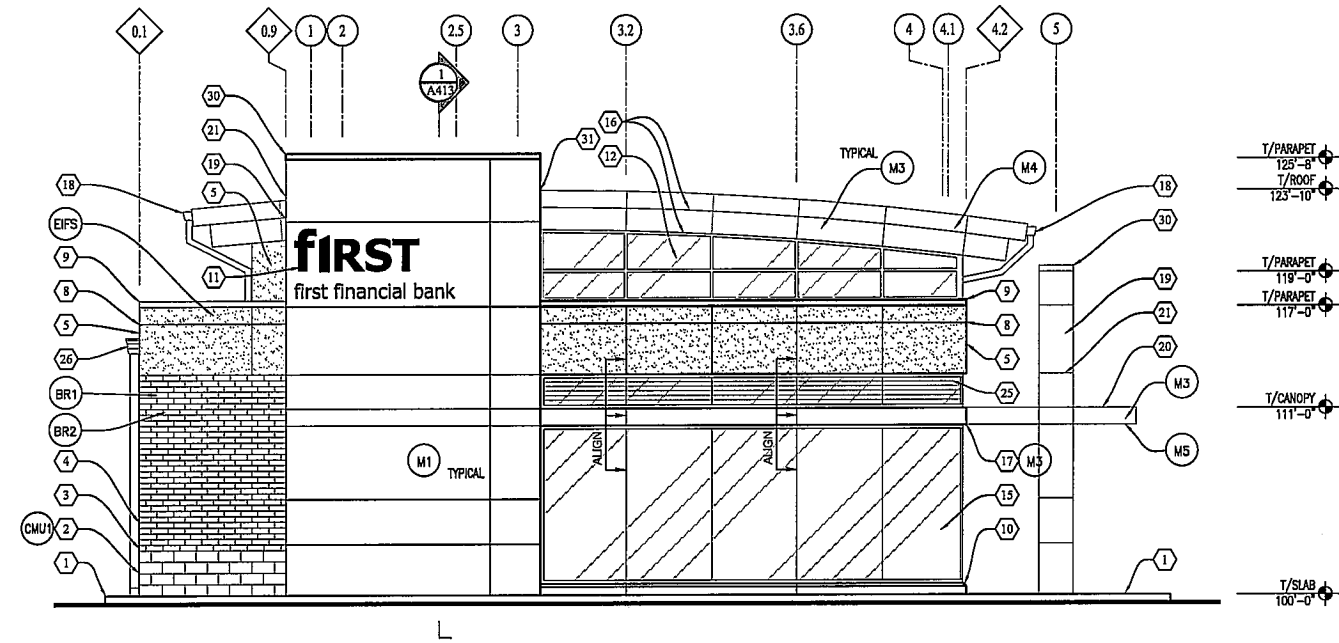
**GENERAL NOTES:**

- A. GRADES/ELEVATIONS AT DRIVE-THRU ARE REFERENCE ELEVATIONS ONLY - SEE CIVIL DRAWINGS FOR ACTUAL FINISH ELEVATIONS.
- B. ALIGN VERTICAL EIFS JOINTS WITH STOREFRONT FLASHING JOINTS AND MULLION/GLAZING JOINTS BELOW.
- C. GC OR FRAMER SHALL INSTALL A 16 GAUGE GALVANIZED STEEL Z-GIRT, 1 7/16" X 1 1/16" X 1 7/16", OVER THE 1" RIGID INSULATION AND BEHIND THE HORIZONTAL JOINTS OF EVERY WALL SOFFIT PANEL. PANEL INSTALLER SHALL PROVIDE ALL ADDITIONAL STRAPPING AND CONNECTION POINTS.

**NOTES THIS DRAWING:**

THESE NOTES APPLY TO SHEETS A-201 AND A-202

1. CONCRETE SIDEWALK AND CURB. REFER TO SITE PLAN.
2. BURNISHED CONCRETE MASONRY UNITS (C.M.U.).
3. RECESSED UTILITY BRICK VENEER, ONE THIRD RUNNING BOND.
4. UTILITY BRICK VENEER, ONE THIRD RUNNING BOND.
5. WATER MANAGED EXTERIOR INSULATION FINISH SYSTEM (E.I.F.S.).
6. NIGHT DEPOSITORY - BY OWNER. COORDINATION AND ROUGH-IN BY CONTRACTOR.
7. HOLLOW METAL DOOR AND FRAME (INSULATED), PAINT.
8. 3/4" WIDE "V-GROOVE" SCORING JOINT.
9. PREFINISHED METAL COPING.
10. CAST STONE SILL.
11. SIGNAGE - BY OWNER.
12. ALUMINUM STOREFRONT SYSTEM. REFER TO DRAWING A-901.
13. WATER MANAGED EXTERIOR INSULATED FINISH SYSTEM (EIFS) CANOPY SURROUND OVER WOOD AND STEEL FRAMING. REFER TO ARCHITECTURAL SECTIONS AND STRUCTURAL DRAWINGS.
14. PIPE BOLLARD. COVER PROVIDED BY OWNER.
15. ALUMINUM CURTAIN WALL SYSTEM. REFER TO DRAWING A-901.
16. METAL PANEL CORNICE TRIM.
17. COMPOSITE METAL PANEL TRIM BAND, ANODIZED ALUMINUM FINISH. ALIGN JOINTS WITH MULLION LINES BELOW.
18. PREFINISHED ALUMINUM GUTTER AND DOWNSPOUT WITH DECORATIVE BOOT.
19. COMPOSITE METAL PANEL SYSTEM.
20. ANODIZED ALUMINUM METAL PANEL SYSTEM APPLIED OVER WOOD FRAMING w/ FIRESTONE UC-500 METAL PANEL CEILING SYSTEM TO MATCH.
21. JOINTS IN METAL PANEL.
22. STANDING SEAM METAL ROOF SYSTEM.
23. A.T.M., REFER TO EQUIPMENT DRAWINGS.
24. CUSTOMER CONSOLES. REFER TO EQUIPMENT DRAWINGS.
25. FRIT PATTERN APPLIED TO ALUMINUM CURTAIN WALL SYSTEM. REFER TO DRAWING A-901.
26. PREFINISHED ALUMINUM SCUPPER AND DOWNSPOUT WITH DECORATIVE BOOT.
27. ARTWORK - BY OWNER.
28. PREFINISHED ALUMINUM DOWNSPOUT WITH DECORATIVE BOOT.
29. PREFINISHED ALUMINUM SECONDARY SCUPPER.
30. INTEGRAL METAL CAP / CORING INSTALLED AS PART OF THE METAL WALL PANEL SYSTEM; CUSTOM COLOR TO MATCH METAL PANEL SYSTEM.
31. LOCATION OF CURVED ROOF APEX.
32. 8" WHITE, VINYL BUILDING NUMBERS CENTERED IN TRANSOM GLASS.

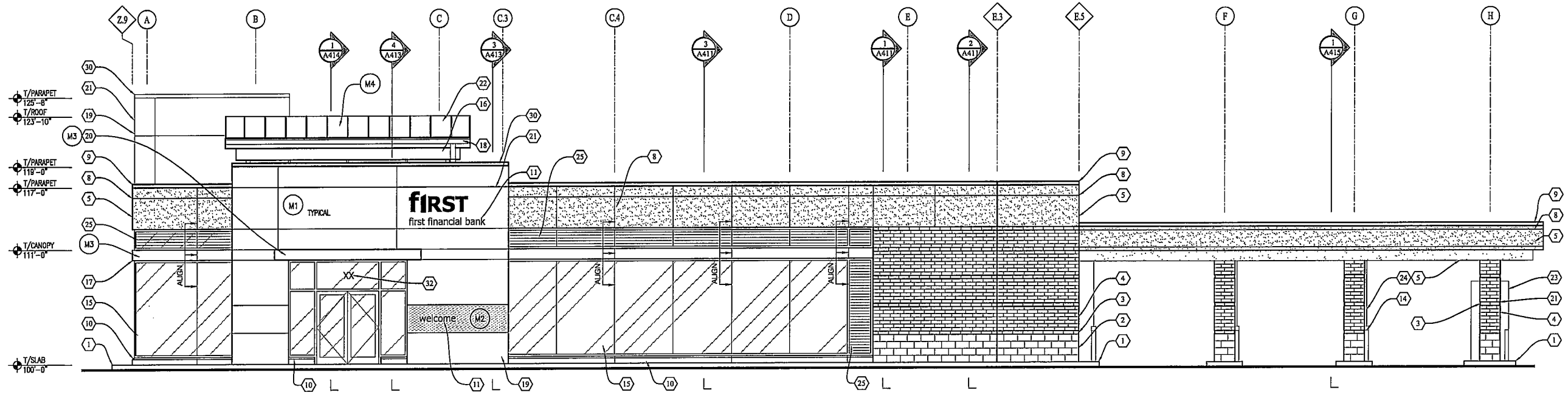


**South ELEVATION**  
 SCALE: 3/16" = 1'-0"

**FINISH LEGEND:**

- (M1) COMPOSITE METAL PANEL - CUSTOM COLOR - YELLOW - PANTONE COLOR 1215C
- (M2) COMPOSITE METAL PANEL - CUSTOM COLOR - BLUE (FRONT AND REAR PANEL THIS LOCATION ONLY) TO BE FACTORY FINISHED OR POST-PAINTED BY CONTRACTOR IN A CONTROLLED ENVIRONMENT
- (M3) COMPOSITE METAL PANEL - CLEAR ANODIZED
- (M4) METAL PANEL - DARK BRONZE
- (M5) METAL CEILING PANEL - ANODIZED ALUMINUM. FIRESTONE UNA CLAD UC-500
- (BR1) FIELD BRICK - BR-1 - BELDEN BRICK - #661 SMOOTH A 07-47 - SEE SPECIFICATIONS AND EXTERIOR FINISH SCHEDULE A203
- (BR2) ACCENT BRICK - BR-2 - BELDEN BRICK - GRAYSTONE VELOUR A 05-09 - SEE SPECIFICATIONS AND EXTERIOR FINISH SCHEDULE A203
- (CMU1) CMU WAINSCOT - CMU1 - BURNISHED BLOCK, GRAND BLANC CEMENT - BOARDMAN. SEE SPECIFICATIONS AND EXTERIOR FINISH SCHEDULE A203
- (EIFS) EIFS - CUSTOM COLOR TO MATCH FIELD BRICK.

NOTE: INDICATED AREAS ARE CONSISTANT ON ALL ELEVATIONS.

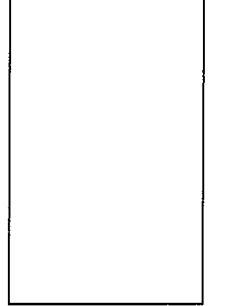


**East ELEVATION**  
 SCALE: 3/16" = 1'-0"

**K4 ARCHITECTURE, LLC**  
 555 East Street  
 Cincinnati, Ohio 45203  
 Tel: (513) 455-5005  
 Fax: (513) 455-5006  
 Webpage: www.k4places.com  
 Email: info@k4places.com

PROPOSED RETAIL BANKING CENTER  
 for  
**Redstone of Kenwood Branch**  
 Montgomery Road  
 Cincinnati, Ohio  
**first financial bank**

| REVISIONS / SUBMISSIONS |             |      |
|-------------------------|-------------|------|
| NO.                     | DESCRIPTION | DATE |
|                         |             |      |
|                         |             |      |
|                         |             |      |
|                         |             |      |
|                         |             |      |



**EXTERIOR ELEVATIONS**  
 Drawn By: MLK, SDS  
 Scale: AS NOTED  
 Job No.: 10-2055  
**A201**