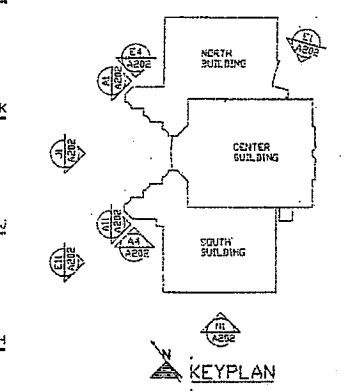


- DRAWING NOTES** M:\R\KME\3904\TS\A202.DWG
- EIFS CLADDING, COLOR #1 UNLESS NOTED OTHERWISE.
 - PAINT EXISTING SPLIT FACE CMU TO REMAIN.
 - NEW PAINTED SPLIT FACE CMU TO MATCH EXISTING.
 - OPENINGS TO BE INFILLED BY TENANT.
 - PREFINISHED STEEL SIGNAGE BAND.
 - STEEL COLUMN, REFER STRUCTURAL DRAWINGS FOR SIZE AND LOCATION.
 - PARAPET OF COURTYARD ENTRANCE BEYOND.
 - EIFS REVEALS, REFER DETAILS NOTED.
 - EXISTING OVERHEAD SHINGLES ROOF BEYOND TO REMAIN.
 - PREFINISHED ALUMINUM COPING.
 - PAINTED HM DOORS AND FRAME.
 - PAINTED OVERHEAD SECTIONAL DOORS.
 - PREFINISHED STANDING SEAM METAL ROOF.
 - ALUMINUM ENTRANCE AND STOREFRONT.
 - EXPOSED CONCRETE GRADE SEAM.
 - 3 HOUR GWS FIRE WALL TO BE COVERED BY RESTAURANT CONSTRUCTION BY OTHERS.
 - PAINTED GALVANIZED IS OVERHEAD COILING DOOR JAMB.
 - PAINTED BY CMU.
 - EXISTING S.H. FASCIA REPAIR AND PAINT.
 - EXISTING HW RECESSED AND FRAME PAINT.
 - PAINTED OVERHEAD COILING DOOR.
 - WALL MOUNTED SIGN BY TENANT.
 - PAINT EXISTING METAL PANELS.
 - PREFINISHED ALUMINUM ROOF EDGE FLASHING.
 - DOCK PUMPS.
 - APPLY EIFS FINISH TO CONCRETE GRADE SEAM, COLOR #1.
 - EXISTING METAL FASCIA CONSTRUCTION TO REMAIN.
 - PAINT.
 - APPLY NEW FINISH COAT TO EXISTING EIFS, COLOR #1.
 - NEW METAL FASCIA CONSTRUCTION TO MATCH EXISTING.
 - ALUMINUM GUARDRAIL.
 - EIFS CLADDING, COLOR #2.
 - SPECIAL AGGREGATE SPLIT-FACE CMU.
 - PAINTED GALVANIZED GUARDRAIL/HANDRAIL, REFER DRAWINGS CORN AND COSE.
 - PREFINISHED METAL FASCIA.
 - PAINTED GALVANIZED STEEL PIPE COLUMN.
 - ALUMINUM AUTOMATIC SLIDING ENTRANCE DOORS.
 - PREFINISHED METAL GUTTER.
 - PREFINISHED ALUMINUM COVER #2.



6	RECORD DRAWINGS	07/20/95
5	ISSUED FOR CONSTRUCTION	07/06/94
4	ISSUED FOR PERMIT	03/11/94
3	BID PACKAGE C-6	08/29/94
2	BID PACKAGE C-5	01/17/94
1	BID PACKAGE C-4	12/20/93

BAXTER / SHIRK DESIGN COLLABORATIVE

BAXTER HODELL DONNELLY PRESTON, INC.

ARCHITECTURE PLANNING INTERIORS PROJECT MANAGEMENT

3300 RED BANK ROAD
CINCINNATI, OHIO 45227-1158
(513) 271-1834 FAX (513) 271-1017

R. B. SHIRK DESIGN COLLABORATIVE - DESIGN CONSULTANTS
THP LIMITED - STRUCTURAL ENGINEERS
WHB ASSOCIATES - MECHANICAL/ELECTRICAL ENGINEERS

KENWOOD MALL REMODEL
HAMILTON COUNTY, OHIO

BUILDING ELEVATIONS

Prep. by: S. P. HILLING
Drawn: CEB TALAMAN
Checked: JAL
Checked Drawing Date: 12/20/93
File No.: KME.8.4

A202

Not to be used for any other project without the written consent of Baxter Hodell Donnelly Preston, Inc. or Shirk Design Collaborative. All rights reserved.