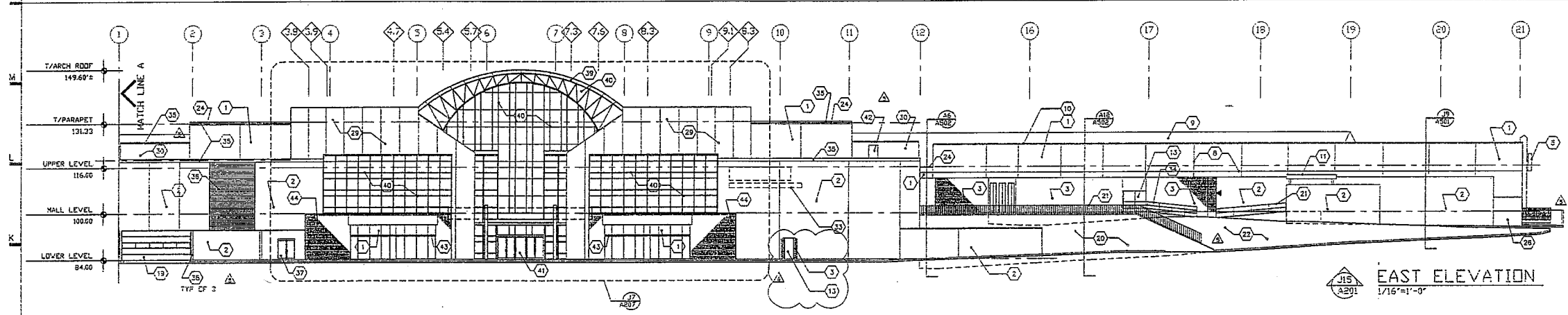
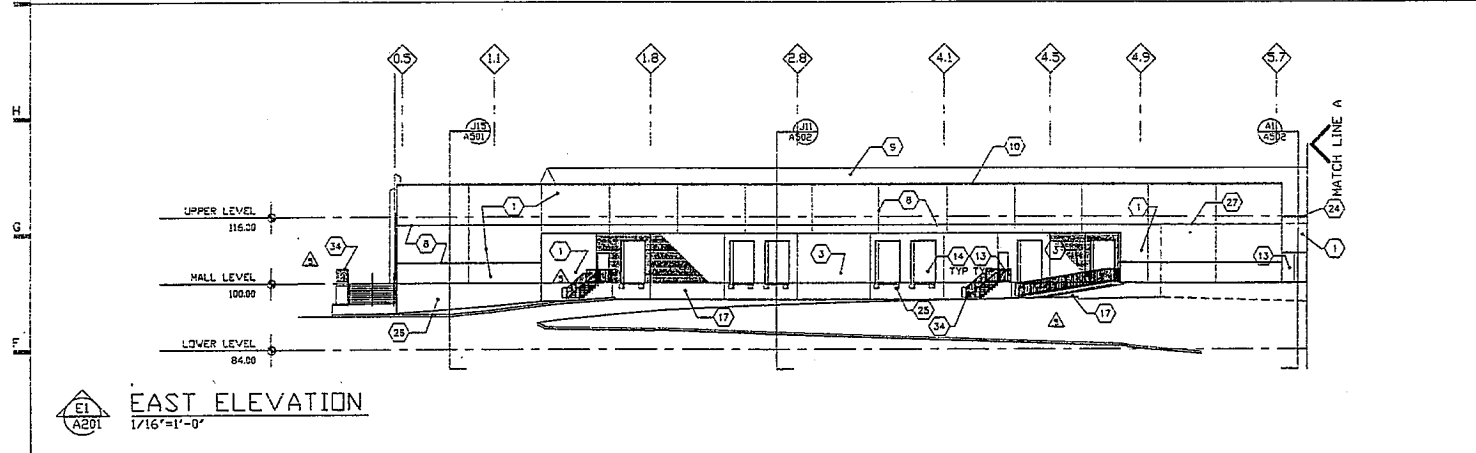


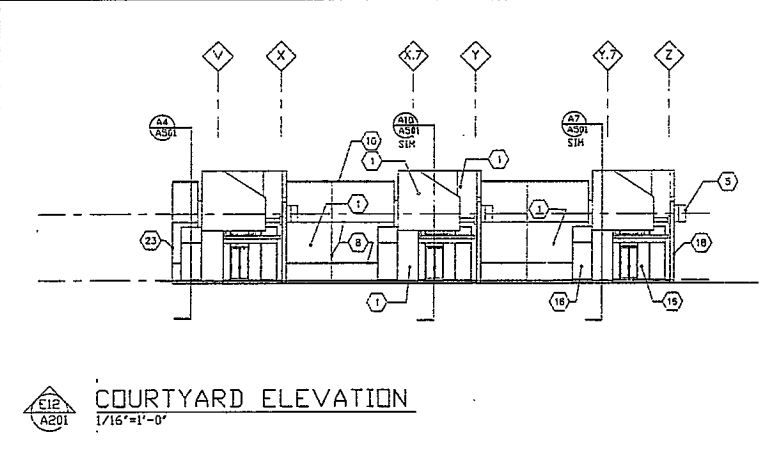
**NORTH ELEVATION**  
1/16"=1'-0"



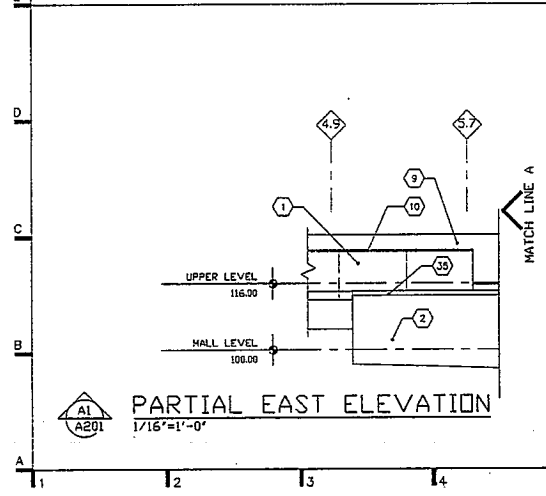
**EAST ELEVATION**  
1/16"=1'-0"



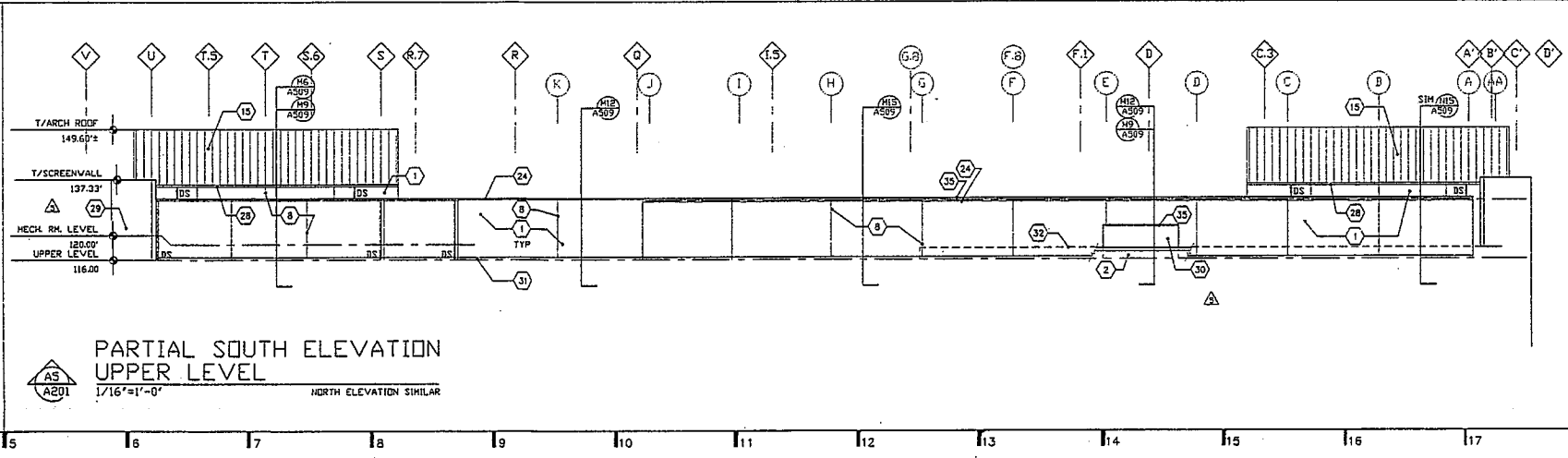
**EAST ELEVATION**  
1/16"=1'-0"



**COURTYARD ELEVATION**  
1/16"=1'-0"

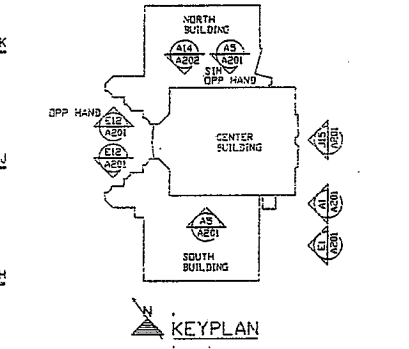


**PARTIAL EAST ELEVATION**  
1/16"=1'-0"



**PARTIAL SOUTH ELEVATION UPPER LEVEL**  
1/16"=1'-0"  
NORTH ELEVATION SIMILAR

- DRAWING NOTES** H:\R\KME004\TS\A201\N-TAT
- EIFS CLADDING, COLOR #1 UNLESS OTHERWISE NOTED.
  - PAINT EXISTING SPLIT FACE CMU TO REMAIN.
  - NEW PAINTED SPLIT FACE CMU TO MATCH EXISTING.
  - OPENING TO BE INFILLED BY TEMENT.
  - PREFINISHED STEEL SIGNAGE BAND.
  - STEEL COLUMN, REFER STRUCTURAL DRAWINGS FOR SIZE AND LOCATION.
  - PARAPET OF COURTYARD ENTRANCE BEYOND.
  - EIFS REVEALS, REFER DETAILS NOTED.
  - EXISTING CRESTORY SHINGLED ROOF BEYOND TO REMAIN.
  - PREFINISHED ALUMINUM COPING.
  - EXISTING CANOPY, PAINT.
  - EXISTING CONCRETE LOADING DOCK.
  - PAINTED HM DOORS AND FRAME.
  - PAINTED OVERHEAD SECTIONAL DOORS.
  - PREFINISHED STANDING SEAM METAL ROOF.
  - ALUMINUM ENTRANCE AND STOREFRONT.
  - EXPOSED CONCRETE GRADE BEAM.
  - PAINTED GALVANIZED STEEL PIPE COLUMN.
  - EXISTING SECTIONAL OVERHEAD DOOR, PAINT.
  - EXISTING STONE-CLAD REINFORCED CONCRETE RETAINING WALL TO REMAIN.
  - EXISTING STEEL GUARDRAIL TO REMAIN, PAINT.
  - EXISTING LANDSCAPED AREA TO REMAIN.
  - CONTRACT LIMIT.
  - PREFINISHED ALUMINUM ROOF EDGE FLASHING.
  - DOCK SUPPERS.
  - APPLY EIFS FINISH TO CONCRETE GRADE BEAM, COLOR #1.
  - LINE OF EXISTING TRANSFORMER BUILDING, REFER ELEVATION A1/A201.
  - PREFINISHED ALUMINUM GUTTER.
  - EIFS CLADDING, COLOR #2.
  - PAINT EXISTING METAL PANELS.
  - PREFINISHED ALUMINUM COUNTERFLASHING AND FLEXIBLE SHEET ROOFING FLASHING.
  - LINE OF EXISTING CMU PARAPET.
  - SIGN BY TENANT.
  - PAINTED STEEL GUARDRAIL/HANDRAIL, REFER DRAWINGS CODES AND CODES.
  - REPAIR AND PAINT EXISTING METAL FASCIA/FLASHING.
  - EXISTING ALUMINUM LOUVER, PAINT.
  - EXISTING ALUMINUM DOORS TO REMAIN.
  - EXISTING STEEL BOX COLUMN, PAINT.
  - PREFINISHED METAL FASCIA.
  - ALUMINUM CURTAINWALL.
  - ALUMINUM AUTOMATIC SWING DOOR.
  - EXISTING HM DOOR AND FRAME, PAINT.
  - PAINTED STEEL SUNSCREEN.
  - SPECIAL AGGREGATE SPLIT-FACE CMU.
  - PREFINISHED ALUMINUM LOUVER #1.



6	RECORD DRAWINGS	07/20/95
5	ISSUED FOR CONSTRUCTION	07/06/94
4	ISSUED FOR PERMIT	03/11/94
3	BID PACKAGE C-6	02/25/94
2	BID PACKAGE C-5	01/17/94
1	BID PACKAGE C-4	12/20/93

PREPARED BY: JKH

BAXTER / SHIRK DESIGN COLLABORATIVE

**BAXTER HODELL DONNELLY PRESTON, INC.**

ARCHITECTURE PLANNING INTERIORS PROJECT MANAGEMENT  
3500 RED BANK ROAD  
CINCINNATI, OHIO 45227-4108  
(513) 271-1834 FAX: (513) 271-7017

R. B. SHIRK DESIGN COLLABORATIVE - DESIGN CONSULTANTS  
THP LIMITED - STRUCTURAL ENGINEERS  
WHB ASSOCIATES - MECHANICAL/ELECTRICAL ENGINEERS

**KENWOOD MALL REMODEL**  
HAMILTON COUNTY, OHIO

**BUILDING ELEVATIONS**

Prep. by: J. F. WILLCRG  
Drawn: CEB/TAL/KAM  
Checked: TAL  
Current Drawing Date: 12/20/93  
Proj. No: KME B.4

**A201**

This document is the property of Baxter Hodell Donnelly Preston, Inc. and is to be used only for the project and site identified herein. It is not to be reproduced, stored in a retrieval system, or transmitted in any form or by any means, electronic, mechanical, photocopying, recording, or by any information storage and retrieval system, without the prior written permission of Baxter Hodell Donnelly Preston, Inc.