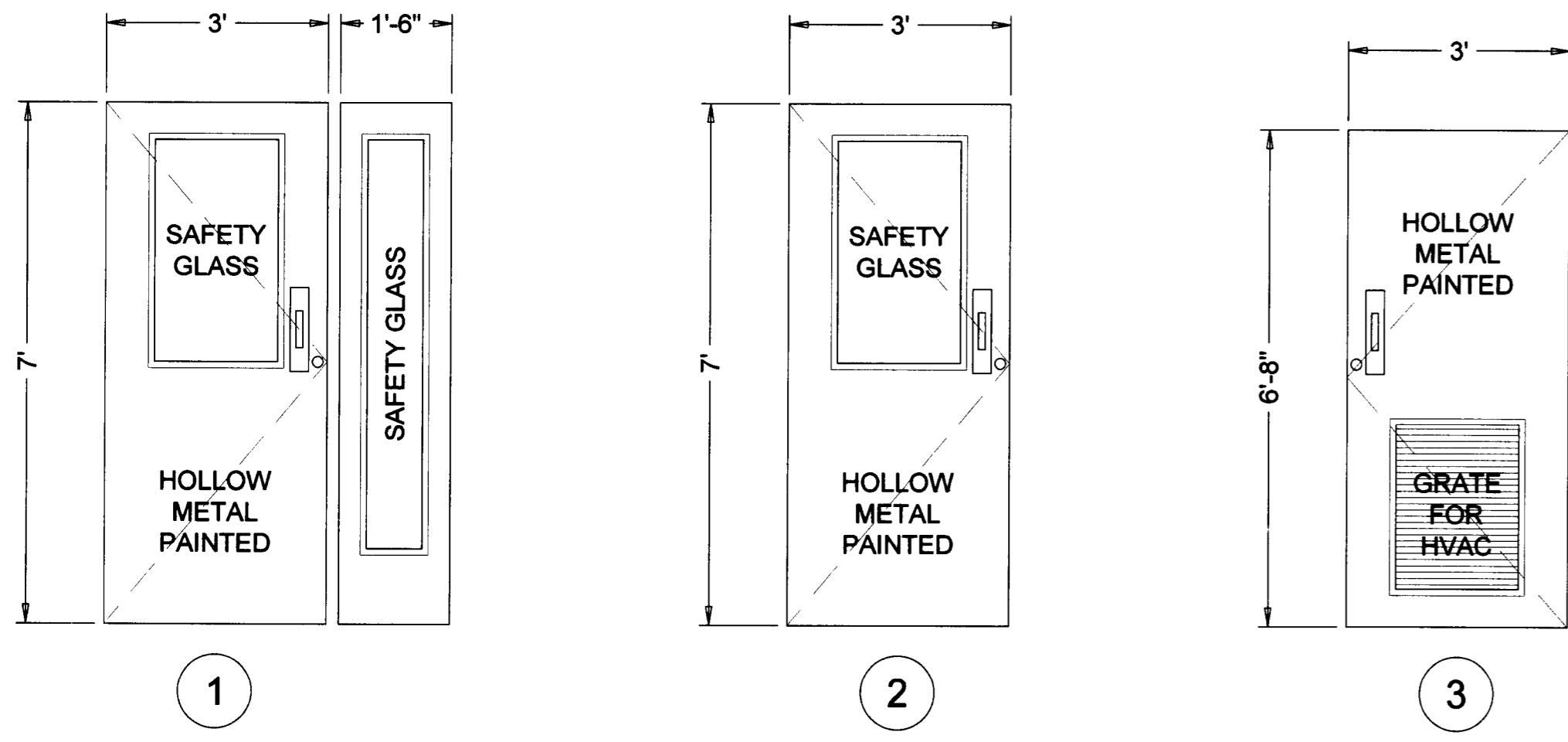
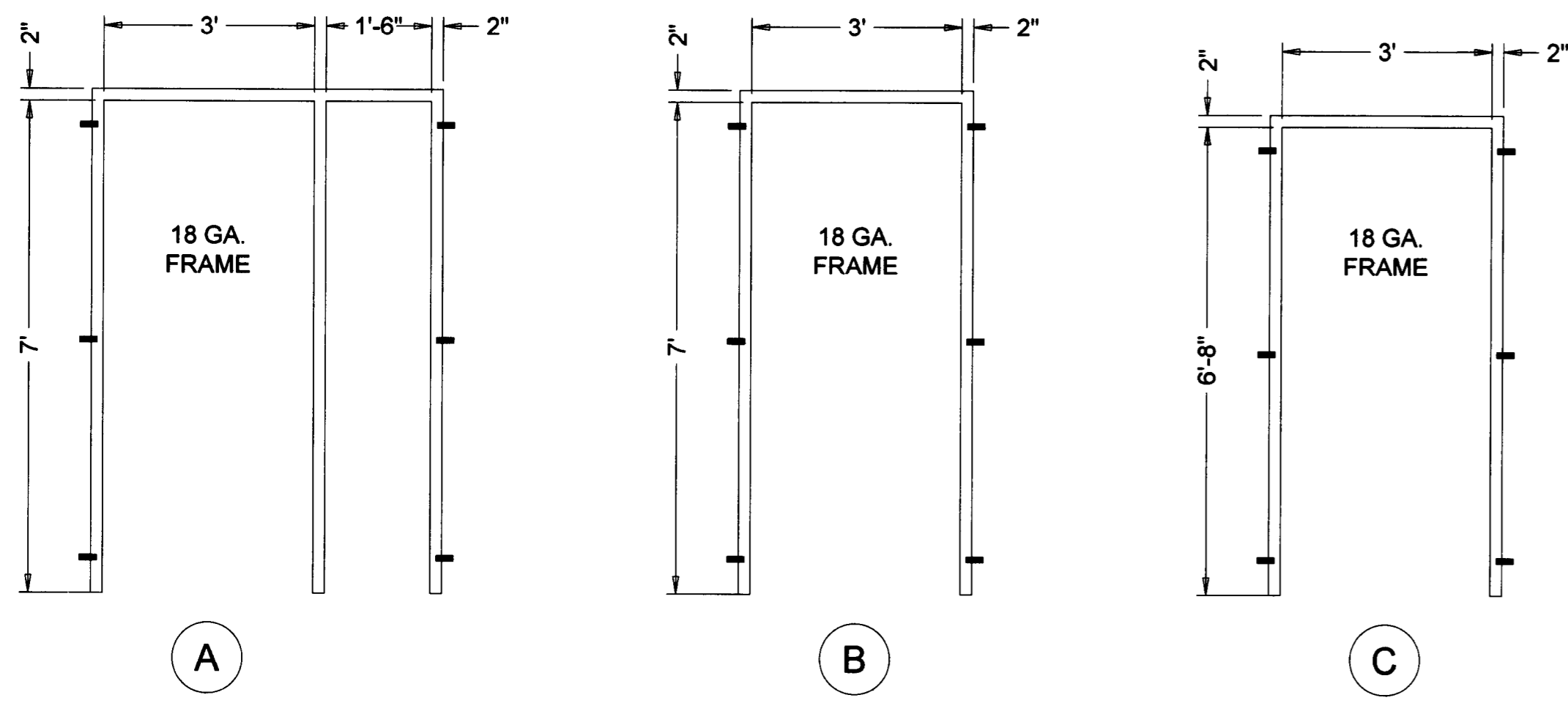
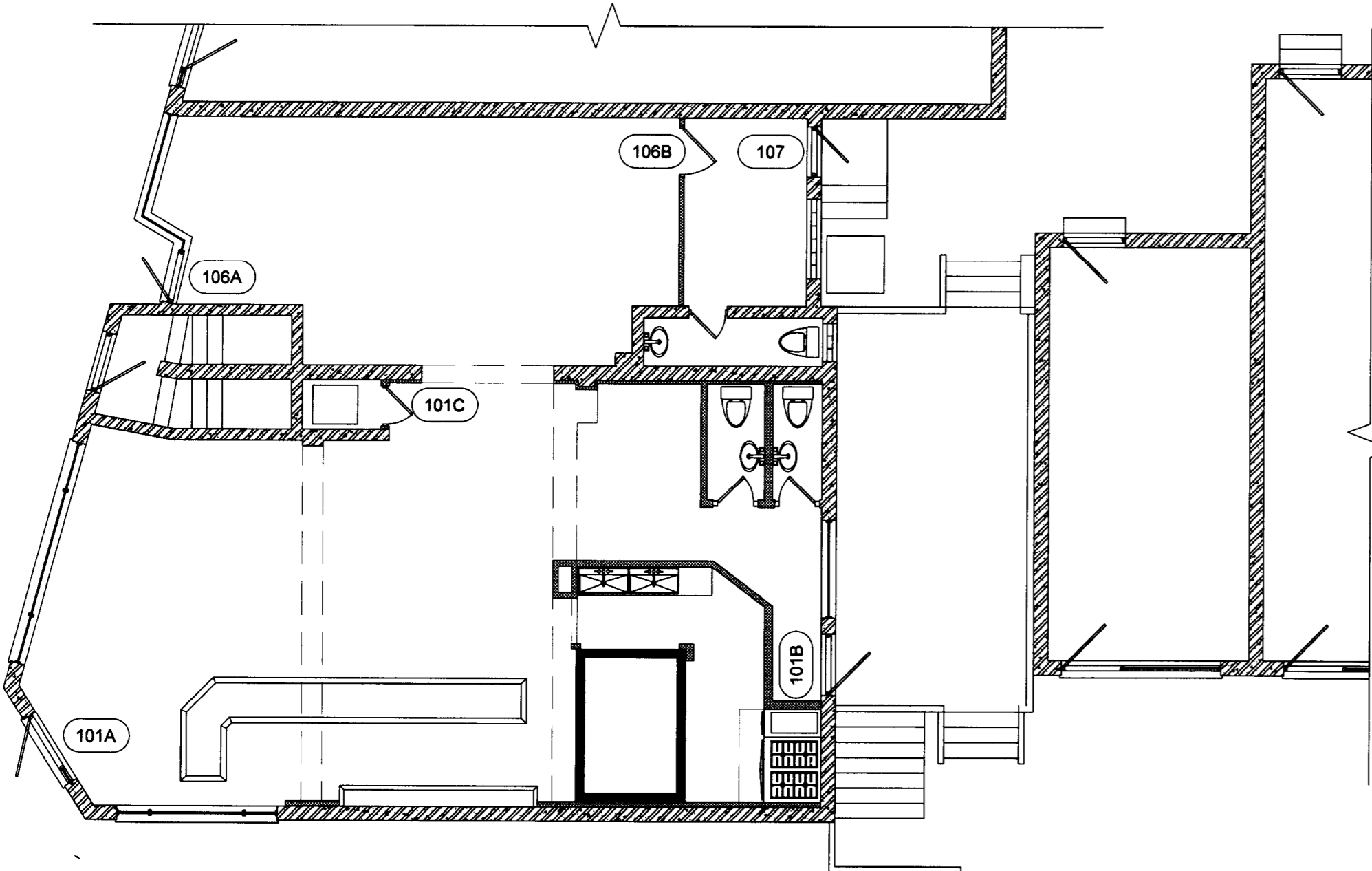
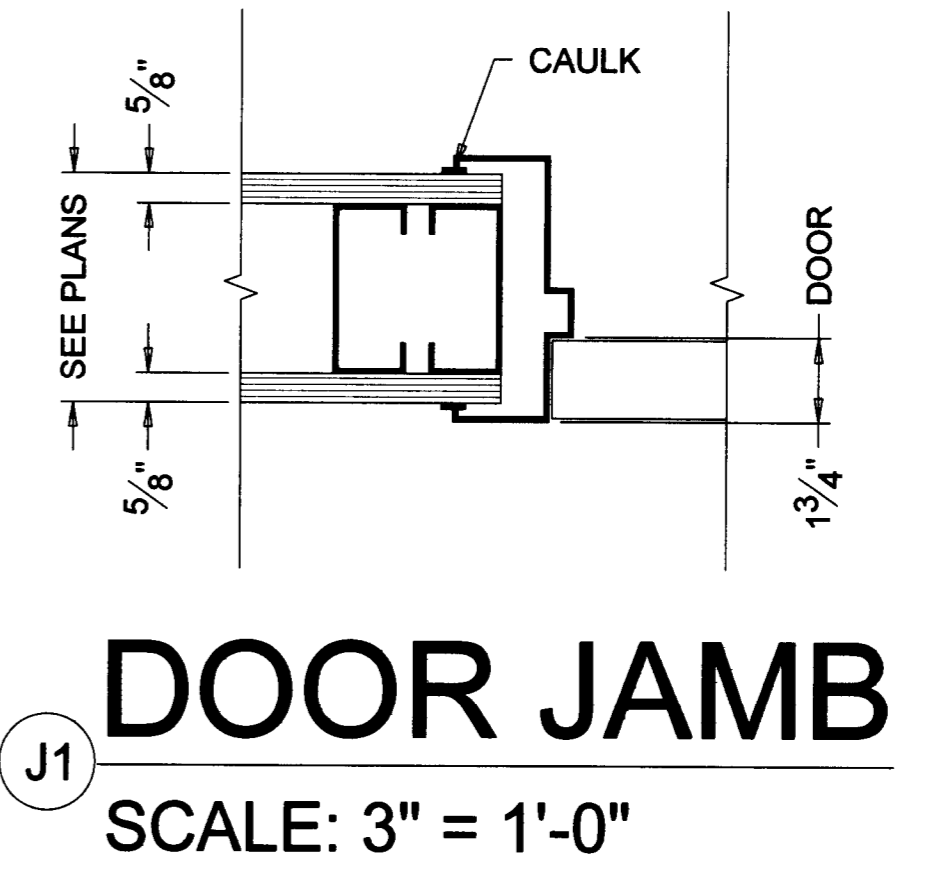
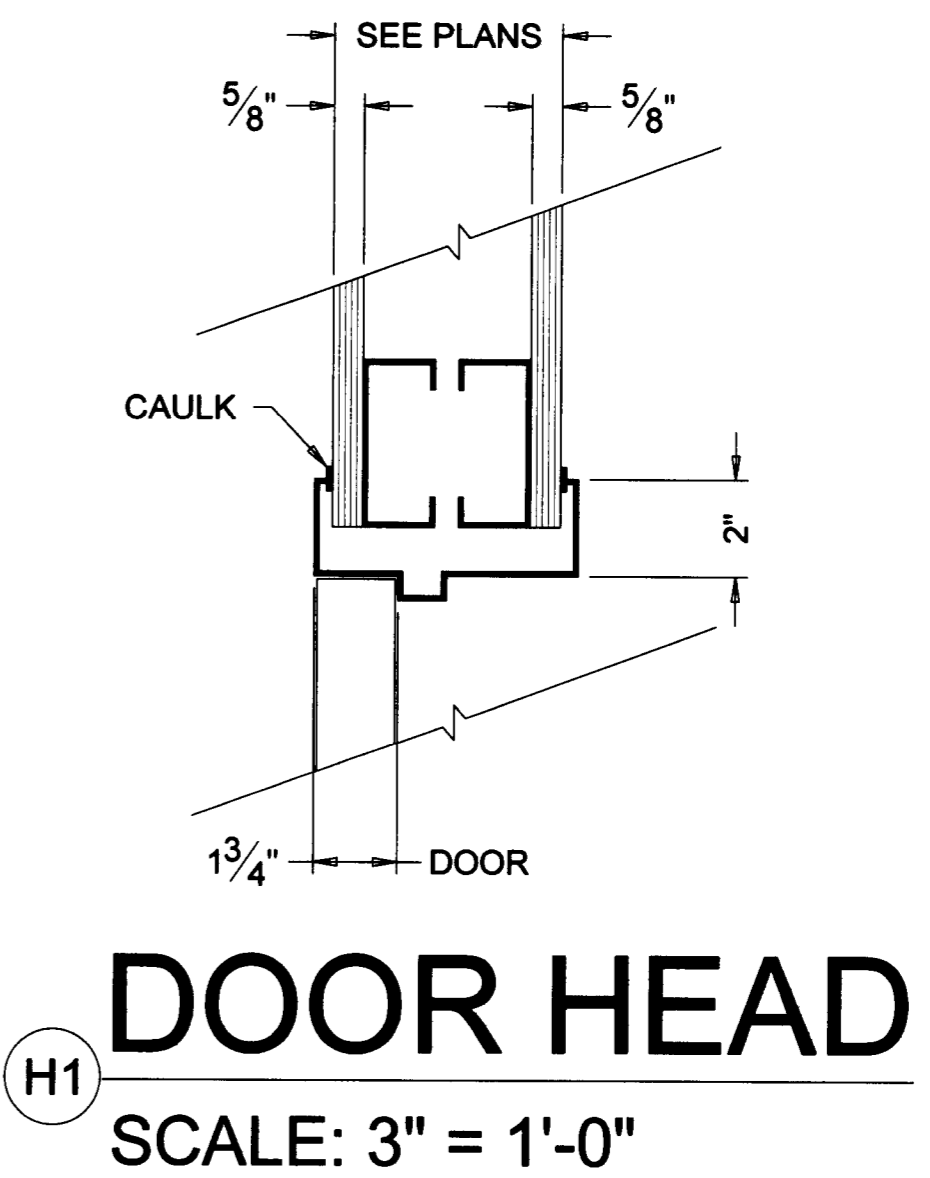


© COPYRIGHT 2015 CADSTRUCT, INC. PRINT TO SCALE (22X34) - HALF SCALE FOR (11X17)



- DOOR SCHEDULE NOTES:**
- HARDWARE FOR ALL EGRESS DOORS SHALL MAINTAIN THE DOORS READILY OPERABLE FROM THE SIDE FROM WHICH EGRESS IS TO BE MADE WITHOUT THE USE OF A KEY OR SPECIAL KNOWLEDGE OR EFFORT. DRAW BOLTS, HOOKS AND OTHER SIMILAR DEVICES ARE PROHIBITED ON ALL EGRESS DOORS. THE USE OF MANUALLY OPERATED FLUSH BOLTS OR SURFACE BOLTS IS PROHIBITED.
  - DOOR AND WINDOW PROVIDER/ INSTALLERS SHALL VERIFY ALL ROUGH DIMENSIONS IN FIELD PRIOR TO FRAME FABRICATION. ALL FRAMES TO BE WELDED (NOT KNOCK DOWN) UNLESS THEY MUST BE KNOCK DOWN FOR ACCESS TO THE SITE.
  - HARDWARE SETS SHALL BE DEVELOPED DURING THE SHOP DRAWING PHASE. THE ABBREVIATIONS LIST BELOW AND THE PERFORMANCE SPECIFICATION DOCUMENT SHALL BE USED FOR BIDDING.
  - HARDWARE SETS SEE SCHEDULE: K - KEY, L - LATCH, P - PASSAGE, AND PP - PUSH PULL.



**NEW DOOR PLAN**  
SCALE: 1/8" = 1'-0"

DOOR SCHEDULE													
DOOR #	ROOM NAME	DOOR SIZE	DOOR		FRAME			HDWR SET	W.S.	F.R.	REMARKS		
			MATERIAL	TYPE	MATERIAL	TYPE	HEAD					JAMB	CLOSER
1	MAIN ENTRY	3'-0" x 7'-0"	H.M. STEEL	1	H.M.	A	H1	J1	Y	K, P	Y	EXISTING EXTERIOR DOOR & FRAME	
2	REAR EXIT	3'-0" x 7'-0"	H.M. STEEL	2	H.M.	B	H1	J1	Y	K, P	Y	NEW EXTERIOR DOOR & FRAME	
3	UTILITY	3'-0" x 6'-8"	ALUMINUM	3	ALUM.	C	H1	J1	N	K, PP	N	1	REPLACE DOOR AND FRAME
4	BAR EXIT	3'-0" x 7'-0"	H.M. STEEL	4	H.M.	B	H1	J1	Y	K, P	Y	NEW EXTERIOR DOOR & FRAME	
5	OFFICE	3'-0" x 7'-0"	H.M. STEEL	5	ALUM.	C	H1	J1	Y	K, P	Y	NEW INTERIOR DOOR & FRAME	
6	OFFICE	3'-0" x 6'-8"	ALUMINUM	6	H.M.	B	H1	J1	N	K, P	Y	1	NEW EXTERIOR DOOR AND FRAME

8450 BLUE ASH, LLC. 312 (TENANT) 8450 BLUE ASH ROAD SYCAMORE TWP., OH 45236 DEMO/REMODEL	DRAWN BY: J.L.S. ISSUED: PRELIMINARY REV #1: CONSTRUCTION REV #2: CONSTRUCTION REV #3:	DATE: 04/28/15 05/06/15 07/21/15	DESCRIPTION: PRODUCTION OF PRELIMINARY CONST. DWGS FOR JOHN R. GRIER, AIA REVIEW PRODUCTION OF FINAL CONST. DWGS FOR JOHN R. GRIER, AIA APPROVAL REVISED PAGE C1.1 TO INCLUDE DIMENSIONS ON PARKING SPACES
	CAD IN COLOR P.O. BOX CINCINNATI (513) 400		
	SHEET #: <b>A2.1</b> INTERIOR ELEVATIONS		

**JOHN R. GRIER** ARCHITECT  
 11309 DEERFIELD ROAD, CINCINNATI, OHIO 45242  
 Phone (513) 489-3690 Fax (513) 489-3699  
 e-mail: jgrier@tuse.net

STATE OF OHIO  
 JOHN R. GRIER  
 4207  
 REGISTERED ARCHITECT

JOHN R. GRIER, LICENSE #4207  
 EXPIRATION DATE 12/31/2015