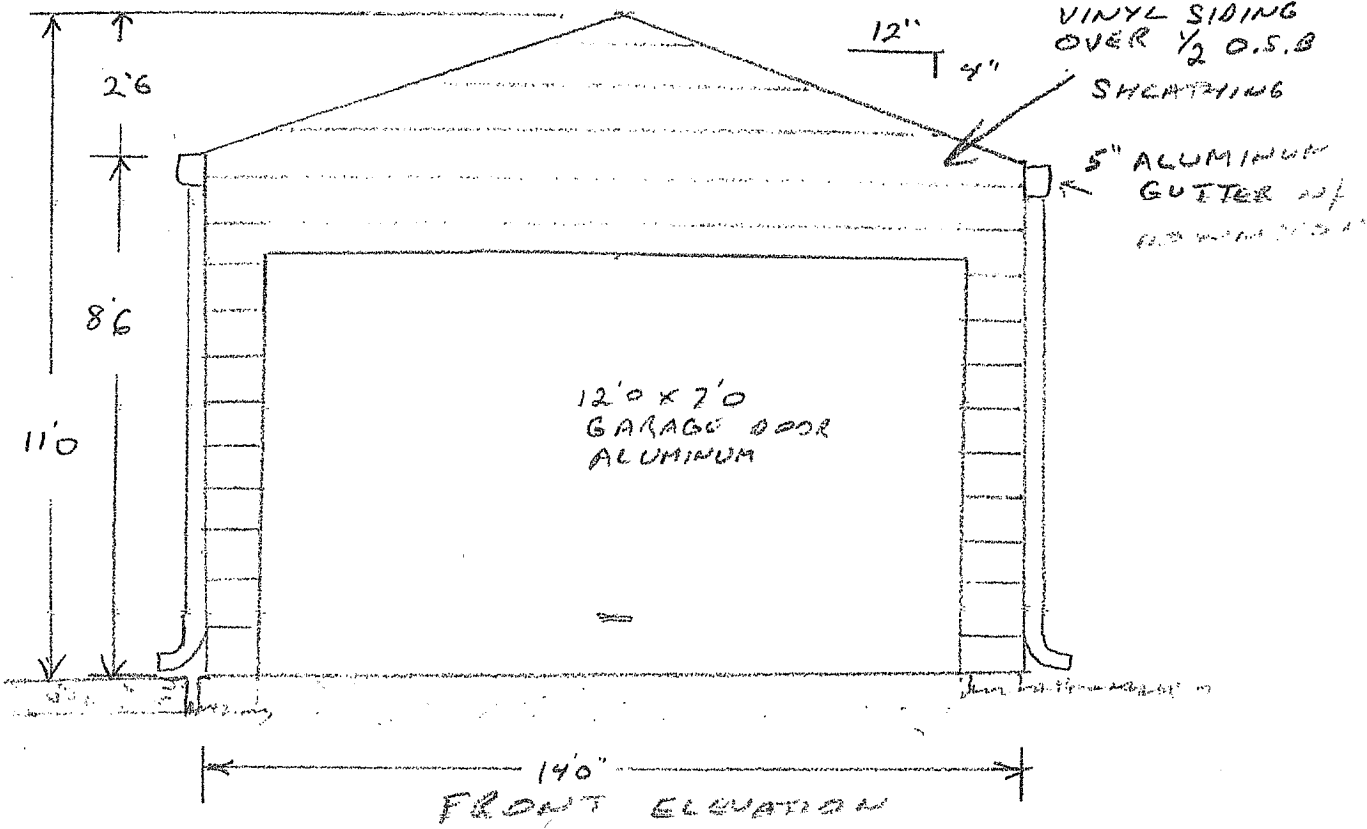


A

Keith Hermes

8711 Lancaster Ave
Cincinnati, OH 45242

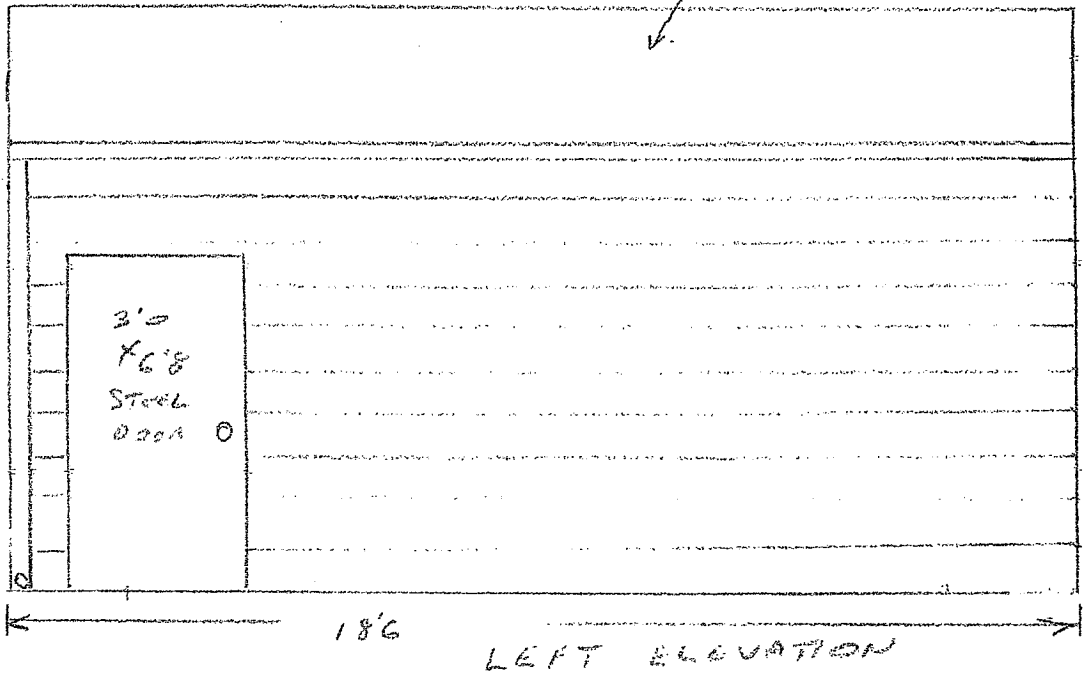
Casualty Restoration Services, LLC
4100 Executive Park Drive, Suite 10
Cincinnati, OH 45241
(513) 276-7829



NOTES

NO WINDOWS
FOUNDATION
AND FRAMING
DETAIL PAGE B

3 TAB FIBERGLASS SHINGLES
OVER 15 LB FELT OVER 1/2" OSB



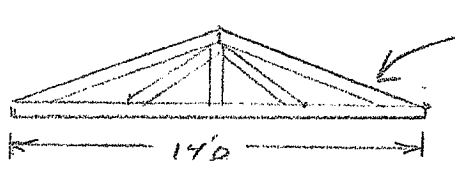
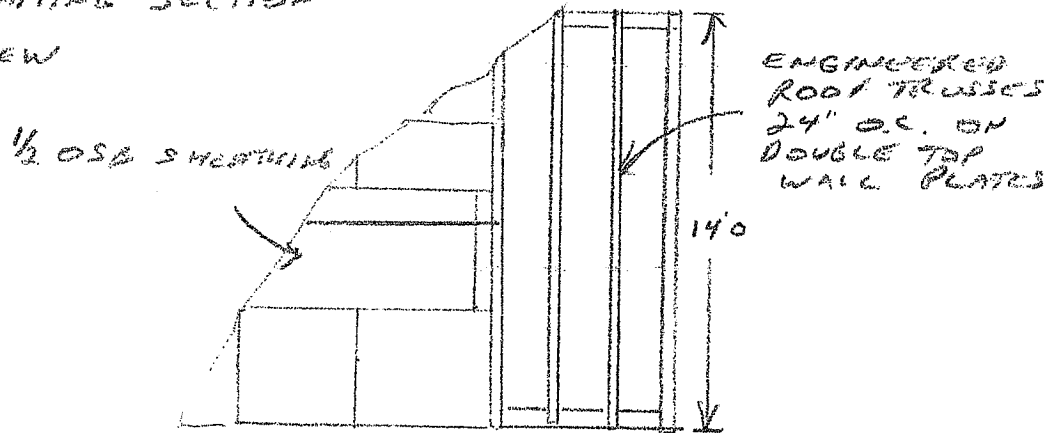
Keith Hermesch

8711 Lancaster Ave
Cincinnati, OH 45242

Casualty Restoration Services, LLC
4100 Executive Park Drive, Suite 10
Cincinnati, OH 45241
(513) 276-7829

ROOF FRAMING SECTION

TOP VIEW

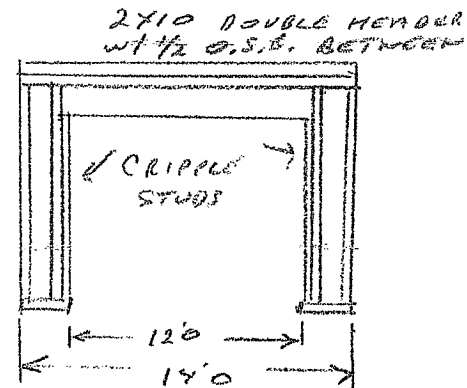
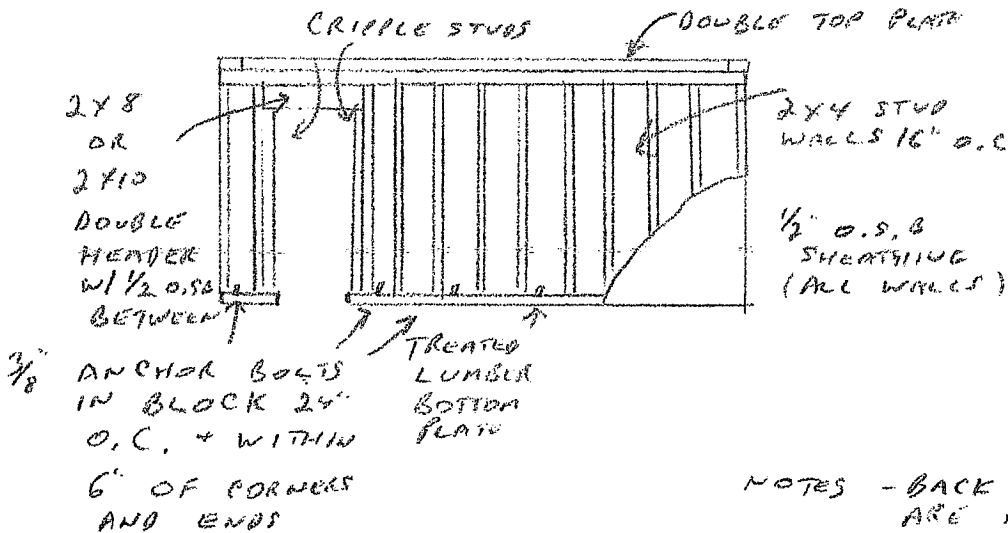


14'0 FACTORY ROOF TRUSSES - NO TAILS
NO OVERHANG

WALL FRAMING DETAIL

LEFT ELEVATION

FRONT ELEVATION



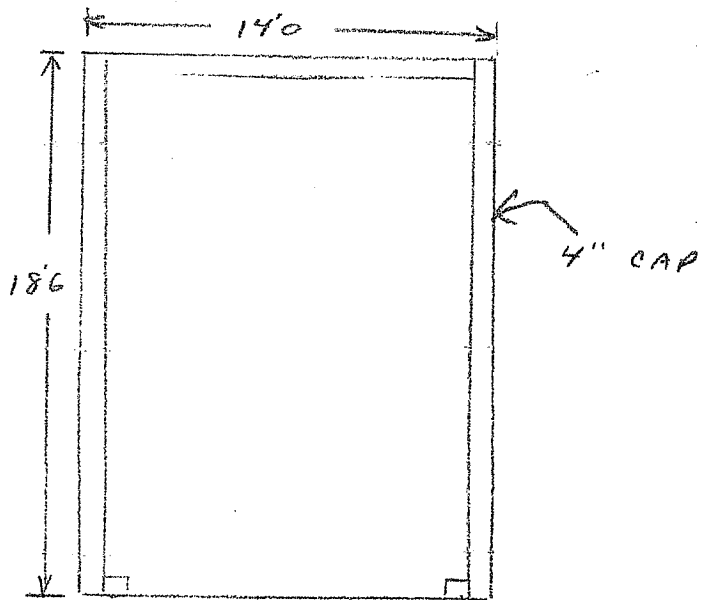
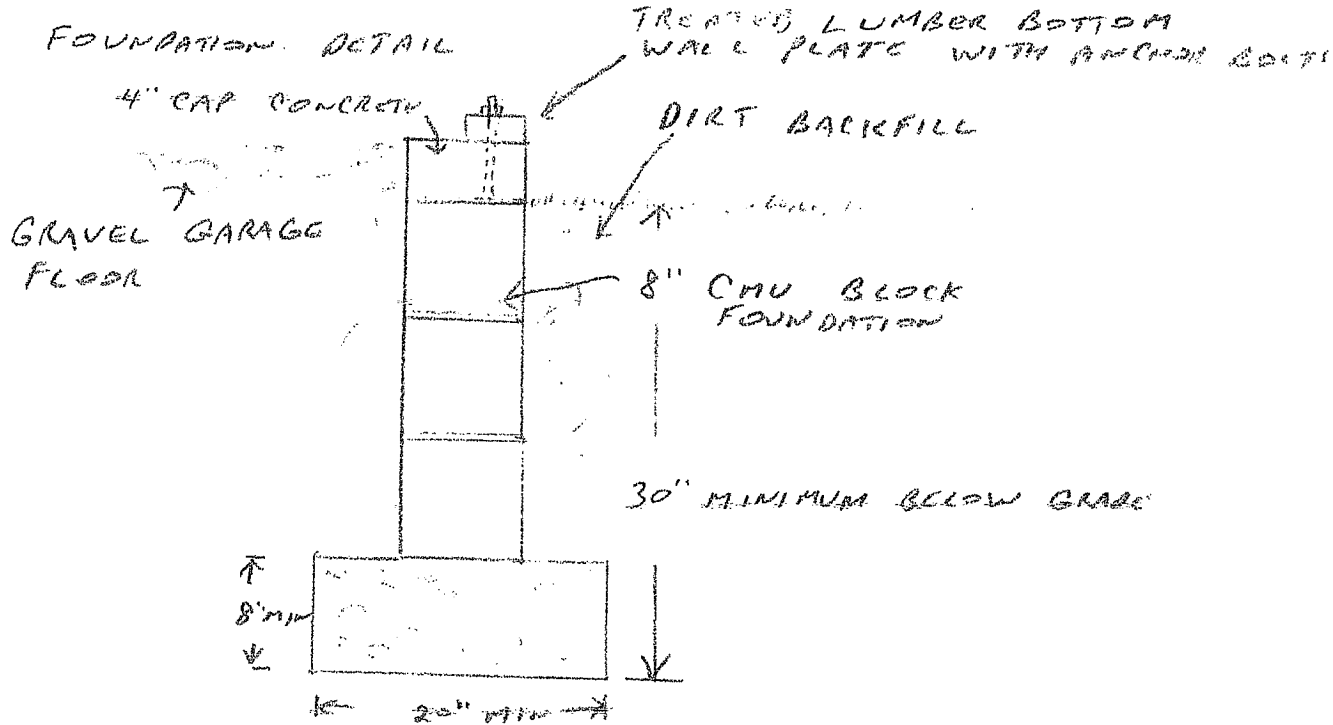
NOTES - BACK AND RIGHT ELEVATIONS ARE FULL FRAMED WALLS WITH NO OPENINGS

GARAGE FLOOR TO BE GRAVEL

Keith Hermes

8711 Lancaster Ave
Cincinnati, OH 45242

Casualty Restoration Services, LLC
4100 Executive Park Drive, Suite 10
Cincinnati, OH 45241
(513) 276-7829



NO CAP - OPEN FOR GRAVEL ENTRY
IN 12'0 AREA
FILL IN OPEN 8" BLOCK
WITH GRAVEL

Keith Hermesch

8711 Lancaster Ave
Cincinnati, OH 45242

Casualty Restoration Services, LLC
4100 Executive Park Drive, Suite 10
Cincinnati, OH 45241
(513) 276-7829

