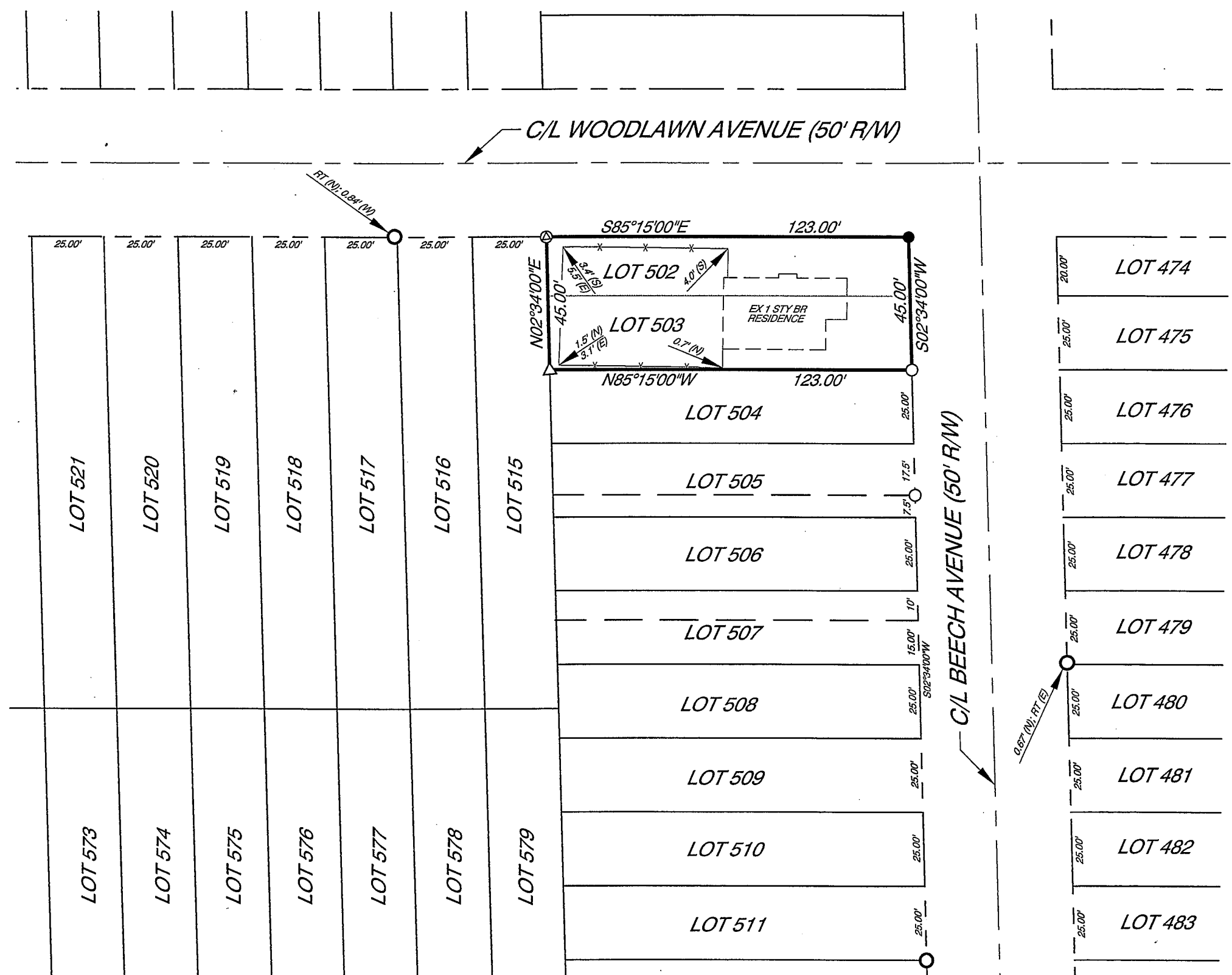


**PLAT OF SURVEY
for MARY C. TAYLOR**

D.B. 4320, PG. 1065
LOTS 502 & 503 - BEECHWOOD SUBDIVISION
P.B. 16, PGS. 80 - 82 H.C.R.O.

AS SITUATED IN
SECTION 14 - TOWN 4 - ENTIRE RANGE 1 M.P.
SYCAMORE TOWNSHIP
HAMILTON COUNTY, OHIO



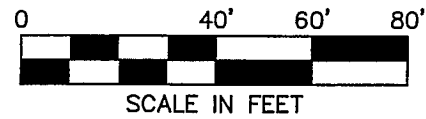
TBAGOLY 05/14/12 - 12:37pm TAB: PLAT
 G:\2012\2012037 TAYLOR SURVEY\DWG\2012037 PLAT.DWG

SURVEYOR'S NOTES

NORTH DIRECTION AND BEARING SYSTEM ARE BASED UPON P.B. 427, PG. 26 OF THE HAMILTON COUNTY RECORDER'S OFFICE.
 EVIDENCE OF OCCUPATION IS AS NOTED HEREON.
 DATA SOURCES INCLUDE DOCUMENTS CITED HEREON.
 EXISTING MONUMENTATION IS IN GOOD, USEABLE CONDITION UNLESS OTHERWISE NOTED HEREON.
 SET MONUMENTATION IS AS NOTED HEREON.

LEGEND

- 5/8" IRON PIN SET (CAPPED)
- ⊕ RR SPK FOUND
- △ MAG NAIL FOUND
- 5/8" IRON PIN FOUND
- ⊖ IRON PIPE



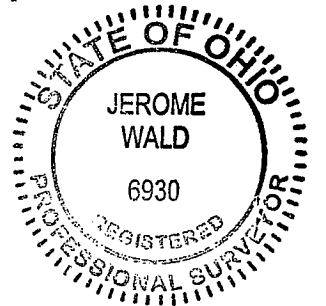
DATE:	APRIL 26, 2012
REV.	MAY 14, 2012
REV.	-
REV.	-

CLS
SURVEYING
SERVICES
SURVEYORS - ENGINEERS
© 2012 CINCINNATI LAND SURVEYING, INC.

11126 KENWOOD ROAD
SUITE 'A'
CINCINNATI, OHIO 45242
PHONE: 513-891-1611
FAX: 513-791-1936

7000 DIXIE HIGHWAY
FLORENCE, KY 41042
PHONE: 859-525-7410
FAX: 859-525-0561

FILE NO.	2012037
SCALE	1" = 40'
DRAWN BY:	T. BAGOLY
CHECKED BY:	J. WALD



CINCINNATI LAND SURVEYING, INC.

Jerome Wald
 JEROME WALD, PROFESSIONAL SURVEYOR
 NO. 6930 IN THE STATE OF OHIO

5/14/12
 DATE