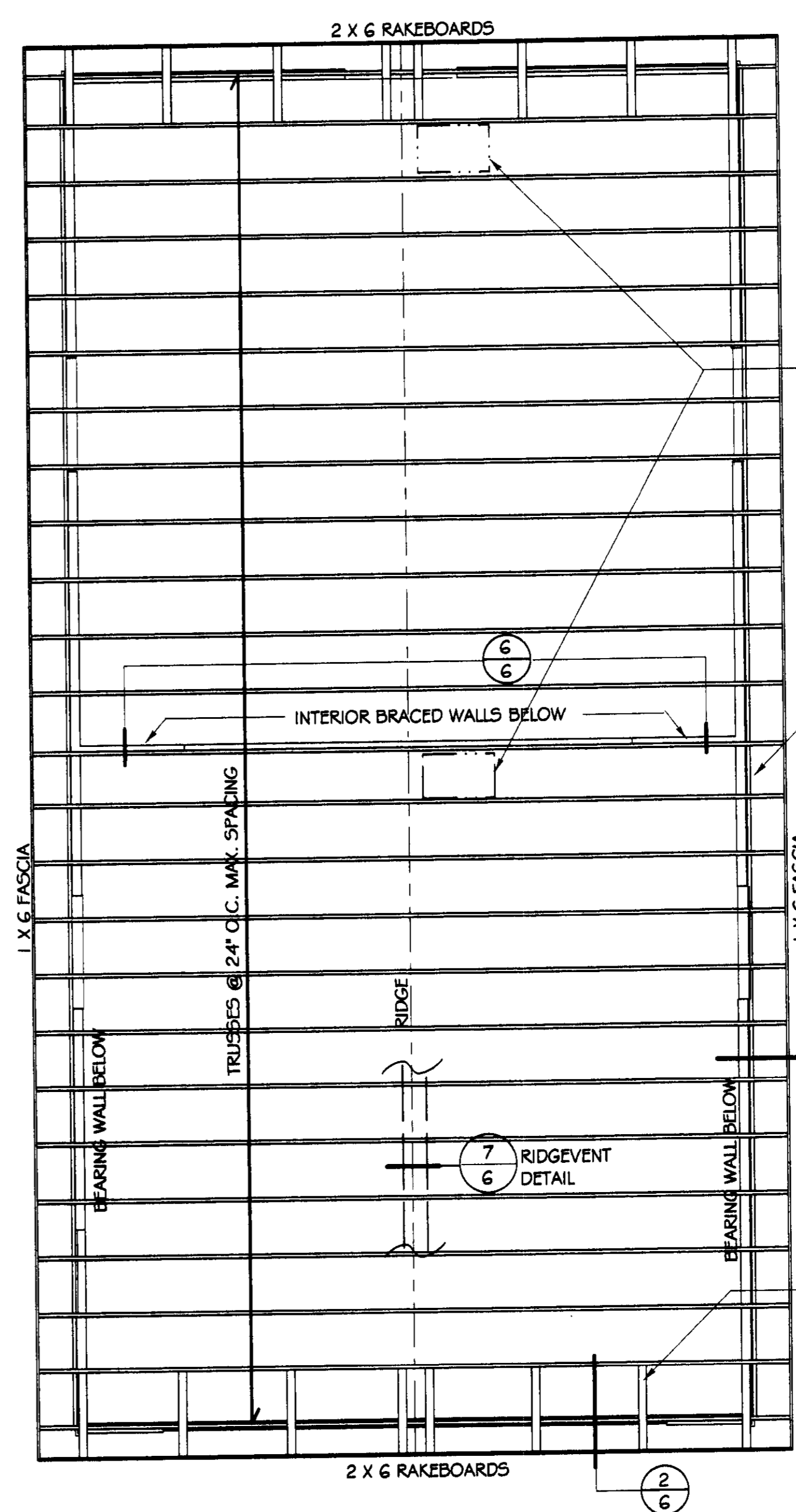


**CROSS-SECTION**

NOTE:  
FOOTING/STEMWALL FOUNDATION SHOWN. FOR ALTERNATIVE THICKENED-EDGE FOUNDATION SEE DETAIL

3/6

FOR CLOSED CEILINGS:  
PROVIDE MINIMUM 20" X 30" ATTIC ACCESS OPENING W/ REMOVEABLE PANEL



**ROOF FRAMING PLAN**

SCALE: 1/4" = 1'-0"

NOTE:  
ALL CONNECTORS SPECIFIED SHALL BE SIMPSON STRONG-TIE OR EQUAL

NOTE:  
ARROW LINE INDICATES EXTENT OF SPANNING MEMBERS, NOT THE DIRECTION OF SPAN

NOTE:  
ENGINEERING DATA AND SPECIFICATIONS SHALL BE PROVIDED FOR TRUSSES BY TRUS MANUFACTURER AS REQUIRED BY THE BUILDING OFFICIAL AND SHALL BE STATE APPROVED.