

Village of Sugar Grove Comprehensive Plan

Community Survey #2 – Findings Summary

Survey Window:

The Village of Sugar Grove Community Survey #2 (CS2) was conducted online from Friday, June 24, 2022 through Sunday, July 24, 2022.

Survey Location:

CS2 was hosted online via the Qualtrics XM survey platform. The survey was accessible via a link on the Village of Sugar Grove Comprehensive Plan website on the CMAP EngageHQ platform. The link to this page and announcements about the survey were posted on the Village website, included in utility bills mailed to Village residents, and promoted at the second community workshop on July 13, 2022. The survey was accessible to respondents in both English and Spanish and via computer and smart device.

Survey Description:

The Village of Sugar Grove CS2 was administered in Phase 2 (Visioning) of the planning process's community engagement timeline. The purposes of the survey included:

- Presenting the community with the draft comprehensive plan vision;
- Presenting the community with the structure of the comprehensive plan themes and recommendations;
- Understand the community's level of support for the draft comprehensive plan vision and themes;
- Understand the community's priorities among the draft comprehensive plan themes;
- Understand where the community sees potential for new residential, commercial, and industrial/warehouse growth in and around the village; and
- Identify any vision elements or potential themes that may have been missing from the draft.

The survey primarily included multiple choice questions, opportunities for short text responses, and heat-mapping activities.

Response quality, as measured by the survey host site's automated analysis is reported to be 100%. No errors were found in the response data set that could impact survey outcomes.

Survey Summary:

CS2 was open for contributions for over four weeks. In that time, 308 responses were recorded. The following summary reflects the responses of all respondents. Not every survey participant answered every question and, as a result, summaries of each set of results may report on fewer results than the total number of survey respondents.

Several questions asked respondents about basic demographic questions and questions about their experience as a member of the Sugar Grove community.

Q1: Respondent Age

Basic demographic data was collected revealing that no respondents were under the age of 18, 2.7% were between the ages of 18-25, 23.8% were between the ages of 26-39, 41.8% were between the ages of 40-55, 26.53% were between the ages of 56-70, 5.1% were between the ages of 71-85, and no participants were 86 years or older.

Q2: Respondent Tenure

Data was collected on respondents' tenure in the community—reflected in Figure 1. The majority of respondents (50.7%) have lived in the community for more than 4 but less than 20 years. 22% have lived there for less than 4 years. 18% have lived in the community for more than 20 years and 9% did not live in the Village of Sugar Grove.

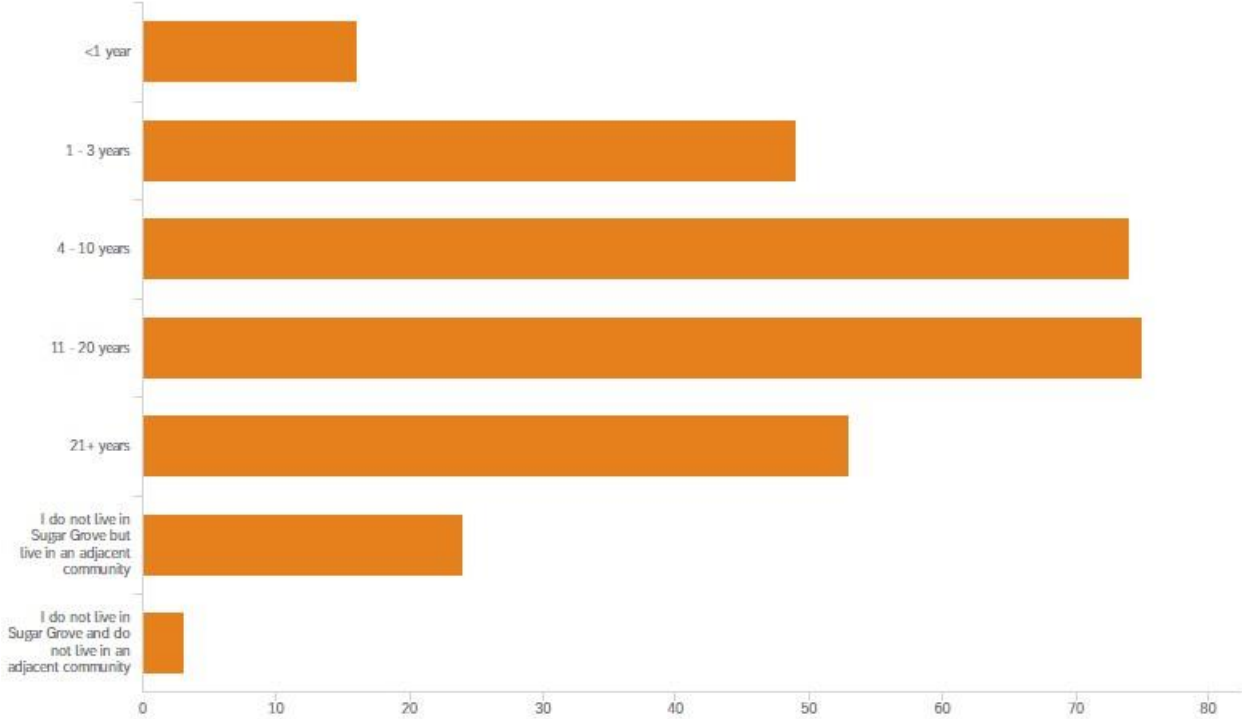


Figure 1: Responses to the question “How long have you lived in Sugar Grove?”

Q3-4: Support for Comprehensive Plan Themes

Respondents were asked to identify their level of support for each of the ten draft comprehensive plan themes. Respondents were presented with a scale bar with options between one and ten and asked to select an area of the scale that represented their level of support for each theme, where one represented the lowest support and ten represented the highest support.

All ten themes received an average score indicating above two-thirds support (all themes receiving a mean level of support score of 6.8 or higher). The ten themes are listed below in order of level of support (more support listed first) with the mean response identified in parentheses.

1. Protect Sugar Grove’s natural resources through strategic growth planning and a focus on long-term sustainability (8.1)
2. Preserve Sugar Grove’s natural setting/feel with sustainable open space practices that focus on recreation, access, and resiliency (8.0)
3. Enhance the local business climate (7.8)
4. Plan with smart growth principles (7.8)
5. Create destinations for community gathering and entertainment in Sugar Grove (7.7)
6. Protect and enhance the neighborhood scale of Sugar Grove (7.6)
7. Enhance the feeling of safety for pedestrians and cyclists (7.5)

8. Diversify Sugar Grove's tax base and reduce the Village's long-term costs (7.5)
9. Create more opportunities for all people to thrive in Sugar Grove (7.2)
10. Improve **connectivity** throughout Sugar Grove and to nearby destinations (6.8)

Q5: Themes and Priorities

Respondents were asked to indicate how strongly they agreed with the statement "these ten comprehensive plan themes reflect my priorities for the future of Sugar Grove." They were presented with a scale bar ranging from one (strongly disagree) to five (strongly agree). The mean result from this scale bar question was a score of 4.04, indicating a high level of agreement with the question statement.

Q6: **Identifying Missing Thematic Elements**

Survey respondents were asked "what, if anything, do you think is missing from these ten draft comprehensive plan themes?" Respondents were given a chance to provide written responses to this question and provided the following contributions:

- I don't want Sugar Grove to turn into a warehouse district **even if it means taxes stay high.** Diversifying the tax base is not worth turning the town into a cesspool.
- All planning should seek to maintain the **rural/exurb feel** of Sugar Grove. Exurb space at the edge of large metropolitan districts such as Chicagoland are special places and growth, if not managed, will inevitably cause the current exurb to become a suburb. Illinois demographics are **trending older.** Specific planning for the future should prioritize facilities and open space for use by senior citizens (parks with trees, benches, level walking paths Not playgrounds and soccer fields).
- A normal downtown area. Affordable housing should not be included we already have the two senior centers which count as low income housing.
- This is a very **biased survey** where you can insert any town into these questions. Of course we want smart growth and a safe environment for our family. The survey should be focused on how we **get business to invest in the village during this bad economy.** We are not getting a large bump in population, so will business be willing to move here? You should also be asking how much are residents be willing to have their **property taxes go up** to pay for useless programs like a bike path through the village.
- Everyone wants SG to be **small town feel.** Not anymore. Dollars blind people. Blueberry muffins brought to planning commission get positive support and yes votes. NIMBY is strong. Trustees need to listen to all people. Where is more housing for **I/DD** people? Route 47 is turning into Randall Road. By having stores be farther away makes people plan better. Everything close is multiple short trips. **Tax incentives for businesses** is unbelievable to attract them.
- **It is a good strong plan.**
- Adjusted zoning boundaries - north and west.
- No **warehouses.**
- Each change and how it affects neighborhoods will determine how people support change. How much any change will affect taxes, traffic and noise would determine support. Hard to give a Yes absolutely to do a change with general questions. But nice you are including public in making our desires be known. Thanks!
- Nothing missing - **safety** is foremost. **Adding business** would be smart to help reduce costs for homeowners, while also preserving the beauty of Sugar Grove.
- WTH does "create more opportunities for people to thrive in SG". That's an innocuous and very broad yet vague theme. Get rid of it or **be more specific.**

- Increased police manpower, traffic flow and lights for residents to safely exit neighborhoods, revenue to support infrastructure repairs.
- What to do with the space at I-88 & Route 47. Ask if the residents want to see their taxes skyrocket to pay for a bike path, since it was hinted. Ask if the future of Sugar Grove be jeopardized over one sub-division. If we have a cash surplus, what are the key priorities where that should be spent? Should new residential be a priority despite all of the issues with the state?
- More retail and restaurant businesses.
- Bike Trail plans, open space plans, road plans. More discussion about commercial development. This is the worst survey I have been a part of. Who is the person that designed this plan? Did the Village Board or Village Staff approve these questions? This plan has Sugar Grove's name on it. The responsibility for this poor questionnaire falls on staff, the committee, and the boards shoulders for how poorly this is done.
- Increase adult condo/townhouse development. Bridge connector between Windsor Point and Prestbury walking trails.
- Would be nice to have a downtown type area with bars, restaurants and shops. Goes along with entertainment though. More opportunity for business.
- Focus on community and uphold property values.
- Themes are too general to rate. This questionnaire is a not worth the time to it took to complete. The Village and the Committee should be ashamed that their names are associated with such poor work.
- We need businesses. We need restaurants. We leave Sugar Grove regularly to go out for dinner, get a drink, spend time with family because there is nowhere to go in Sugar Grove. So disappointing.
- No trucking companies or big box stores.
- Plan for more restaurants, coffee shop, retail.
- The current draft is very comprehensive.
- Equal representation on the Village Board of each section of the village. (Divide the village into wards).
- School growth considerations. Increase Park district options.
- We need more commercial establishments.
- Ensure that the "small town feel" is protected. To do so, it is not in the community's best interest to build apartment complexes. Everyone that lives in Sugar Grove is proud to be here and it feels like an accomplishment. The exclusivity of the village makes people even more proud to be here.
- Balance growth with the increased traffic congestion, crime, and costs that result.
- Nothing that I can think of at this time as I fully support each of these aspirations.
- Making sure we keep out big box and logistics companies.
- Specificity. So broad and general that it is hard to discern what one may be agreeing or disagreeing with.
- Keeping Sugar Grove as a small community.
- The survey was a bit vague. Overall Sugar Grove is a terrific place to live. Having more restaurants, stores for residents/teens would be great and would help the residential taxes. Thank you.

- I would love to see a true downtown area for Sugar Grove. Complete with a town square. This town square could be used for concerts and other social gatherings. I think the perfect area for this would be the land between 56 and Galena east of 47. This is a large area that could be a base for the town square and branch out to other businesses. Parking should be along the outside so that the town center is a safe area with cars. Bridges could be built for pedestrians and bike traffic coming from the east side of Sugar Grove.
- Assurances of no warehouses or industrial in Sugar Grove. We are semi-rural, and location on I-88 was supposed to be a 'Tech Corridor'. Attract office spaces with higher paying jobs.
- Nothing sounds very good.
- Nearly 70% of our taxes subsidize the school system. How can we give relief to retired citizens on a fixed income from ever rising property tax bills.
- Security, crown development, taxes.
- Nothing! if you're interested check out <https://www.strongtowns.org/> and <https://youtube.com/c/NotJustBikes> not sure if either of this help but interesting topics.
- Growing a community atmosphere with a 'downtown' area. Small shops, restaurants, bars, cafes, coffee shops etc.
- Disability assistance; children programs.
- I want Sugar Grove and my neighborhood to remain quiet and a sleepy little town. I DO NOT want things that bring people to Sugar Grove for the weekend or for it to have a box store on every corner. Preserve the natural areas we have and let Sugar Grove remain a quiet town.
- Covers everything, themes are pretty broad leaving them open to different interpretations.
- Infrastructure maintenance and development. More support for police department.
- Growth should be #1. Sugar Grove needs a focal point. Something to center around-should be located near Route 47 and Route 30. Visible to people traveling through our village. Every city around us seems to have something unique to offer. A large water area with fountains, and community park to gather for holiday events would be nice. Sugar Grove doesn't seem to be unified.
- The Village needs to not bring in more banks and gas stations or expensive ice cream shops to help with taxes. They need to look for family friendly places, teen hangouts and affordable sit down independent dining restaurants. Continue to say no to warehouses and truck stops.
- Expand Route 47 near rail overpass. Improve visibility on Prairie Street and Route 47 or close it.
- This may fall into one of the above categories, but having updated playgrounds for children would be nice.
- This question is very vague. I am sure most responses will agree with all of the Themes. You can remove Sugar Grove and insert any other community and the same themes would be strongly supported. How is this comp plan unique from any other community? The prior Comp plan supported all of these themes. Very disappointed that this question is on a survey! Is this a professional survey?
- If you START by identifying our important natural resources, ie: drainages, streams, oak woodlands, wetlands and present protected open space and then planning in a way that connects these and protects them such as being careful of adjacent uses you will be much more successful in attaining your very fine goals.
- Schools!
- Sit down restaurants, bars and breweries that are not fast food.

- Please plan for our **schools** as you plan for community growth. There's little more damaging than overcrowded schools so plan and build now! The high school is a dinosaur. Please consider this my top priority!
- **Widening Route 47** to be 2 lanes in each direction throughout our village. Protect our aquifer.
- More restaurants, more stores, movie theater, swimming pool, ice cream store a real downtown area.
- It depends on how the priorities are ranked, and what amount of relative effort/money, etc. goes into each.
- Stop trying to take land away from **Elburn and Blackberry Township**. You have plenty of land in your jurisdiction to make developments.
- I have an issue with the refusal of growth by building in sugar grove yet we allow crappy building to remain including questionable apartments right by our elementary school. There is zero parks, zero shopping except basics and zero entertainment.
- Keep the community and neighboring communities **rural and safe** from polluters of our natural environment we chose to live here because of this.
- Less is more. People are drawn to the area because of the **farmlands and nature** setting. Don't ruin the area with development. Prioritize the health and safety of all residents, not just within the village. Be a good neighbor.
- Safe access to the Virgil Gilman trail **for pedestrians & bicyclist**. Additional sit-down restaurants & fast food drive throughs for beef & hotdogs or Mexican food.
- Help ensure affordability to stay in Sugar Grove. **The taxing** from the school district is excessive and very concerning. We are hearing the high school wants to do a "facelift /remodel. More \$ to the schools will make living in Sugar Grove unacceptable and tax us out.
- **Not allow big businesses** or corporations to come in and change the small town feel.
- Entertainment and restaurants.
- More food places/ stuff to do.
- Let's be Business friendly!!! Other towns are doing it. Don't focus on equity and affordable housing. It's fine as is!
- Not just preserving nature and enhancing nature, but **outdoor recreation**.
- I would like to see more detailed ideas on how to reduce the cost of living in Sugar Grove and more specifics on how to increase the opportunities for more people to move in.
- **Roadway connectivity. Bike path connectivity.**
- Clear communication for environmental sustainability of the village which links development, recreation, culture etc.
- There needs to be more options for entertainment in the town. Restaurants, coffee shops, bars, boutiques.
- Protect Sugar Grove's natural resources through strategic growth planning and a focus on long-term sustainabilityAND be a partner to surrounding residential areas to sustain natural resources.
- I believe that adding definition to being a responsible/good neighbor to the surrounding area, especially in areas of focus for future expansion of the village. What is on the outskirts of town now, will be "in town" or part of the town a decade from now.

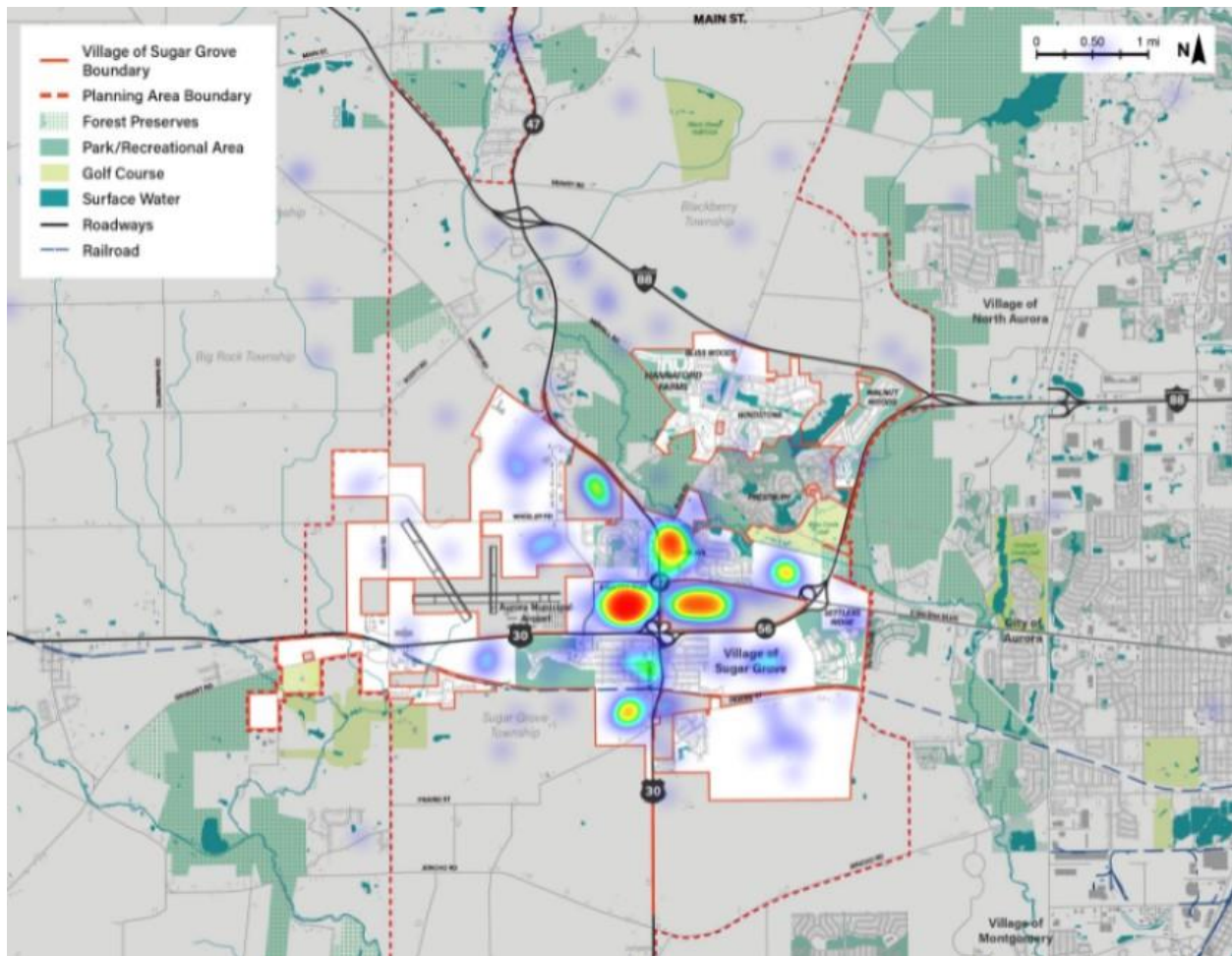
- Stop your incessant connection to the old ways of doing things. It's time to build Sugar Grove and get out of your comfort zone. Stop settling for every other community around us building up.
- Need a community pavilion or outdoor meeting space to hold events, gather etc. We have no sense of community here because we have no "central location", downtown or gathering space.
- A strong downtown or central hub for sugar grove that other communities boast.
- Limit truck traffic and irresponsible tax financing for developers.

Mapping Activities

For the next three questions, respondents were invited to click on up to three locations on the map where they preferred to see different types of growth and development. The results of these question are reflected in the heat maps below. Brighter colors (red, orange, yellow) represent more selections and cooler colors (green, teal, blue, purple) represent fewer selections. Bright spots indicate clusters of participant selections.

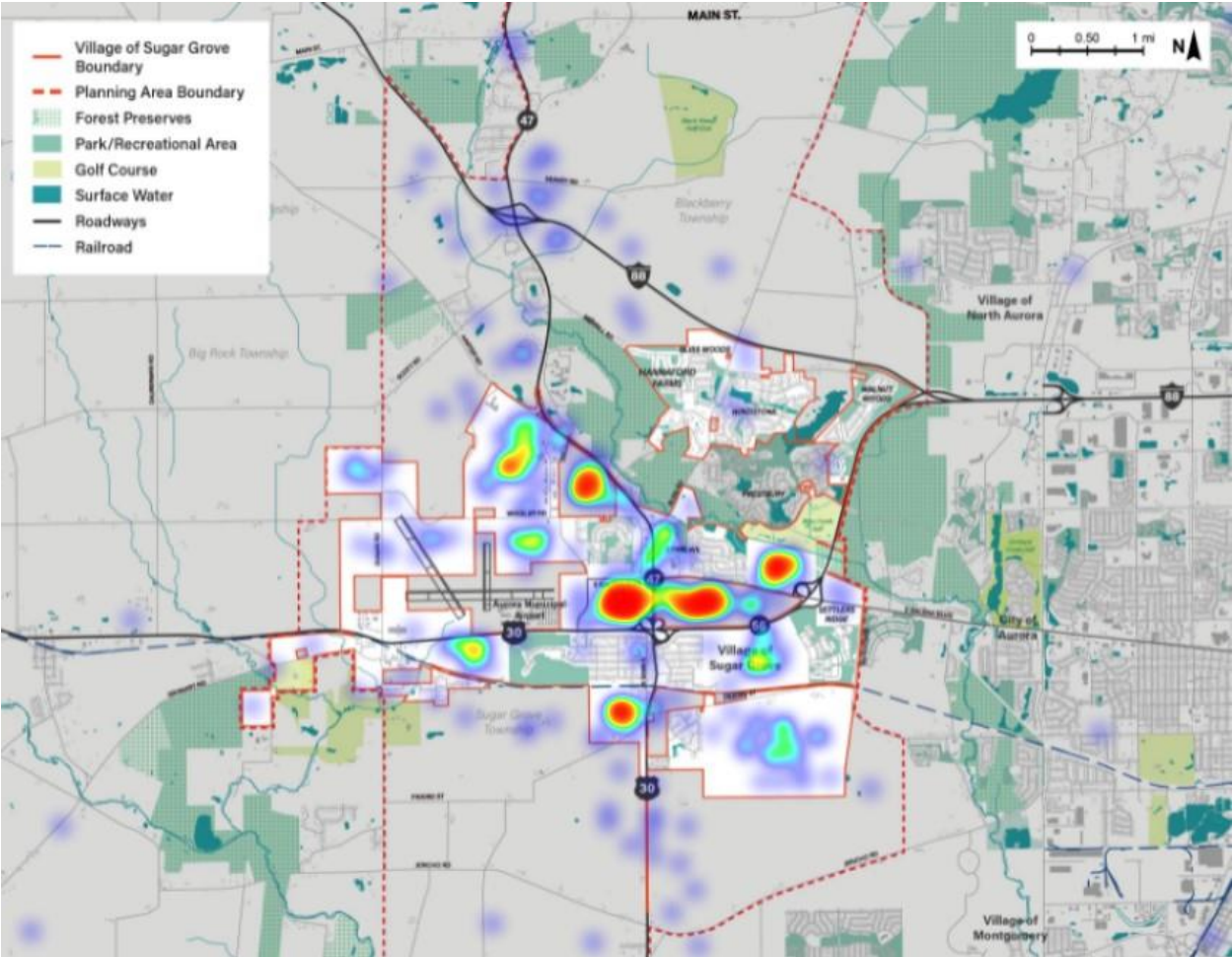
Q7: Planning for Walkable Commercial Growth

Survey respondents were presented with an image of a map and asked “where in and around Sugar Grove do you see the greatest potential for economic growth where small-scale/walkable retail uses are appropriate?”



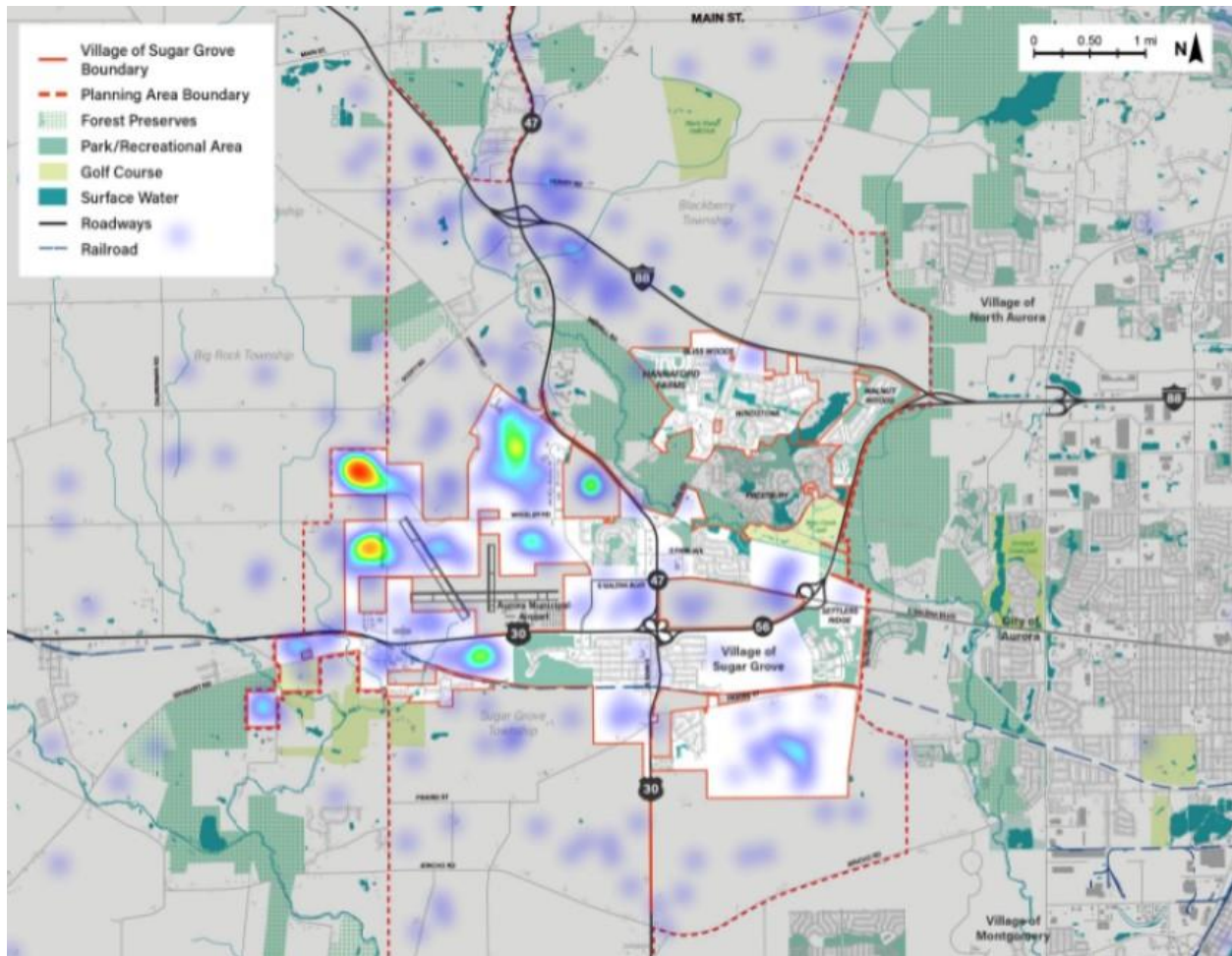
Q8: Planning for Large-scale Commercial Growth

Survey respondents were presented with an image of a map and asked “where in and around Sugar Grove do you see the greatest potential for economic growth where large-scale/big box retail uses are appropriate?”



Q9: Planning for Industrial and Warehouse/Distribution Growth

Survey respondents were presented with an image of a map and asked “where in and around Sugar Grove do you see the greatest potential for economic growth where industrial and warehouse/distribution uses are appropriate?”



Q10: Additional Comments

Respondents were asked to provide written responses for any additional comments they had for the planning team.

- I am not in favor of Sugar Grove going into the landlord business. I do not support Sugar Grove building a town hall or other buildings with the hope that commercial businesses will follow.
- Warehousing should be discouraged. It adds higher levels of traffic congestion and possibly pollution than other development possibilities. Light industrial/technology encouraged. Planning should anticipate autonomous vehicles (including small delivery type vehicles used on college campuses). Easements should be set, new development should include right of ways, etc. The undeveloped greenfield space could make Sugar Grove attractive for early pilot studies - for instance, set aside land for a 'driverless roadway' between SG and the Fox Valley Myers station. Self-driving taxi, bus, or similar could exclusively shuttle people to the station without fear of accidents with human operated vehicles. Eventually, when the US deems self-driving vehicles capable of operating alongside human operated vehicles, the exclusive use can be dropped. The Route 47 and I-88 intersection could be targeted for EV only fueling stations for both cars and trucks. Agrotourism should be considered in planning use areas. Previous Kane County land use planning marked the western third of the county as desirable to maintain as agricultural. SG is ideally positioned as the 'gateway' from Chicagoland to this area.

- It scares me that warehouses will be built with no concern for the people who live by the land. It was my understanding that the new village government was going to get business in sugar grove not outside of it and that is what seems to be happening. For example crown is paying for the TIF study. So if they are paying for it then they are going to get their way and the land will become concrete city. Take a ride west on I-88 to Peace road. You will see what a data center and warehouses look like. It's not pretty.
- What does justice have to do with anything about planning?
- The Route 47 and I-88 corridor is the best location for any of these projects. Hanna did Farms should not dictate the future of the village.
- No big industrial warehouses. We are too small and need to keep it that way. Go back to comments submitted by people from other towns that approved that kind of "progress" and how negative it has been for them.
- Please build more bike paths to connect the city
- Do not want large scale or industrial. Would ruin the feel of the town. Small unique retail and restaurants, a locally owned coffee shop, and more parks would be ideal. Maybe even a splashpad.
- please consider development at Main Street and Route 47. Great hard stop corner with lots of traffic.
- No warehouses.
- NO industrial or warehouse/distribution in Sugar Grove.
- Would love to see a Target, more restaurants, and more activities for kids.
- Higher quality restaurants would be nice. No more fast food.
- Hard to work with the map. Development along major roads Route 47 for example makes sense.
- Retail in brick and mortar is dying. It's done online. SG doesn't have a walkable downtown. Don't want anymore growth on Route 47. ALL THE RETAIL we need is within a few miles on Randall. Me need to increase capacity here in town. It won't lead to significant tax reduction.
- Bringing more High-tech to Sugar Grove would be good. Reducing the regulatory market, and reducing restrictions on residents would help greatly. Our taxes are far too high and really need to come down significantly. No one wants to move here or set up a business as it costs too much and the city has too many rules. Stop setting up more HOAs, just have free-standing communities, please. It doesn't help that our school is more than half our tax bill. Our police department wastes our money as well, someone please explain why we need 3-4 times the number of vehicles for the number of officers we actually have on patrol at a time.
- How did we become part of this plan? It looks like this is a large scale plan for the far western suburbs. We moved to Sugar Grove 16 years ago because it is small, quiet, and safe. We like it this way and don't want the kind of growth that you are planning. This whole plan is concerning. Have you read and fully understand this plan? Did we vote on this? How is this being approved? Just a few questions and thoughts that we have.
- We need a walkable downtown like Batavia, St Charles or Geneva!
- I have lived in Sugar Grove for most of my life. As a child, we had to depend on neighboring communities for festivals, shopping, hang out spots, etc. I'm now a mom of three and would love to attend events in our community, shop and spend my money in Sugar Grove, and give my kids a place to hang out at when they get together with friends. It's been discussed for years and no one has ever built us a downtown. Sugar Grove needs it!

- I don't think warehouse/distribution would be a good fit for Sugar Grove. Traffic/noise along Route 47 is bad enough and added truck traffic due to warehouses/distribution would only make this worse.
- I hope the planning team will work to develop consensus among residents for the plans, and also strongly take into consideration the residents' opinions as you make future decisions on the plan.
- Thank you for the opportunity to inform change in Sugar Grove! I feel that there are plenty of spaces in Sugar Grove to help build more attractive business space and also attract more people to Sugar Grove from neighboring communities to dine, meet, and work.
- We need less retail and more open space with tennis courts, basketball courts, bike trails, open venues to host markets and music. Fort Collins, Colorado is a great example. If it is accessible by foot or bike people will come. Living in suburbs we have no safe way to get anywhere except by car. It would be nice if kids were able to get around town on bikes and such. Find a way to connect all the different subdivisions in Sugar Grove to a main destination by a sidewalk/trail.
- There should be industrial, Corp base off Route 47 and I-88, away from residential but easy access.
- Make it easy for business and industry to locate here without tax breaks. Make decisions that take in the best interests of ALL the village residents and not just one section or subdivision.
- Please consider the community's needs: grocery shopping, restaurants and a coffee shop. Please do not build apartment complexes. More single family homes needed.
- Try to keep Sugar Grove the great community it is with the beautiful nature areas it has. And any large commercial industries out and small local shops & businesses something local can and would support.
- From my experience in living in Oswego which experienced rapid growth, recruiting and developing big box retailers has very little upside for the community. It results in increased traffic congestion, increased crime, and a decline in quality of life for residents while ultimately contributing very little tax relief to residents due to the problems and costs associated. Growth for growth's sake is not a laudable goal for the residents.
- Stay away from industrial and distribution facilities. They will destroy Sugar Grove almost overnight.
- I do not support any Trucking companies and/or big box stores.
- Do not change Sugar Grove!
- Big box retail, warehouses, and manufacturing is definitely Not appropriate for Sugar Grove. People moved here for the semi-rural setting. Lots of big box retailers are already present within a short drive.
- <https://youtube.com/c/NotJustBikes> and <https://www.strongtowns.org/>
- New/additional Designated 55+ Housing Development Area similar to Meadowridge Villas.
- Don't ruin why we relocated here.
- Limit big box stores. No Walmart.
- Overall well planned.
- No big box stores or warehouses in or around Sugar Grove. I don't care about being taxes down, I want peace and quiet. I do not want to live in a family fun zone or a destination for people to come. Go live in Geneva or Naperville if you want that. Small restaurants and local businesses is what I want but I don't want Sugar Grove to be a fun place to come for the day.

- We do not need big box retailers, everything we need is already within 15 minutes.
- This comp plan update has been worthless. We are maps asking about connecting paths, mixed use development, asking about lot sizes, location of multi-family housing.... There is so much more that should be addressed than three maps. The Village should be embarrassed to call this a comprehensive plan update.
- Limit Big Box stores. No warehouses, trucking depots, industrial development at all as it doesn't fit with the mindset and culture of our small town. Diversify growth in the way of outdoor sports complexes, restaurants, lodging.
- Need retail/activities to do in town, more sit-down restaurants, breweries and bars. No more fast food.
- No industrial/warehouse!!!
- Please, no unsightly and resource consuming warehousing.
- No big box, no industrial.
- Keep industrial/warehouse buildings away from Elburn and Blackberry Township. That can all go on your southern border. Build businesses we are all taking our money to go their towns I personally rarely shop in Sugar Grove.
- Leave the natural beauty of our rural areas the same. If farmers need to sell turn into prairie like it was before the farmers arrived.
- Leave Blackberry Township alone. If you want to develop industry and big commercial, do it far to the south away from homes where farmers would be happy to sell and there is no risk of safety.
- Less truck traffic- Better traffic safety on Route 47 for drivers (less trucks) More restaurants/businesses More green space Update parks.
- None of those ugly warehouses.
- Main Street has older homes that could be rezoned into businesses. A few years ago there were multiple homes for sale on Main street between Cross and the tracks. This would of been a great opportunity to build up a boutique, small shop area destination which Sugar Grove so desperately needs to keep people in town. Currently, if I am going to meet a friend, we have no nice place to meetup in town. We need small, non-chain, coffee shop and businesses. We also need the area on Route 47, Cross Street to Galena to be made to look better. The whole stretch is an eye sore, and this is what people see when driving thru Sugar Grove.
- People do NOT want a distribution center in SG!
- Please be mindful of growing developments that may attract more people which could have a negative impact on Sugar Grove. More people bring more crime, pollution, etc.
- Adding a few stores/restaurants, but not disrupting the beauty/ nature of Sugar Grove.
- I don't want any of these items added to Sugar Grove. I enjoy the small town feel of this community and have no problem driving 10 minutes to get access to this.
- This was a great survey! Keep up the great work and staying progressive.
- Condos=bad. Green energy- money waster Tax incentives for businesses= good.
- The Route 47/Galena Boulevard area has had a lot built up. Using those existing spaces for development is fine, but I'd love to see the area from Galena to Municipal and Municipal to 30 undeveloped. That is one of our community's prettiest areas and great for recreational pedestrian paths. Putting in more buildings would ruin the aesthetic. Build further down Route 47 near Waubonsee.

- Night life is lacking. Currently you have to leave and go to Aurora, Geneva, Batavia, or St Charles if you want to do that. We have very limited options in Sugar Grove that allows us to spend money on our own community.
- The look and feel of retail and gathering should be inviting. Wasco has done a beautiful job on their downtown restaurants and shopping with aesthetics and feel.
- No to big box retail, industrial, warehouse distribution.
- Create community advisory committees especially with environmental and cultural projects.
- No large-scale big box stores or industrial warehouse use in Sugar Grove! Good restaurants and small shops is what the feel of this town needs. A cute “downtown” similar to the Wasco area would be ideal. We are surrounded by corn fields and forest preserves, please don't lose that!
- We have an industrial area west of Route 47 (by Nicks Furniture, Public Works, etc). Keep all industrial/warehousing in that area.
- I would like to see the previously proposed bridge from Windsor Pointe to the bike path completed. It would also be nice to have a walkable area is shops and restaurants like 3rd Street in Geneva.
- When looking at industrial complexes - consider the background of the companies in question - A digital center by a company like Amazon/Facebook have the know-how and can work with a community to use berms/landscape to keep it from being unsightly (and not have the traffic concerns of warehousing). My biggest concern with Crown's original plan was the lack of background and the sheer amount they planned on building - especially considering all the similar buildings that have been built in recent years. Having partially filled, eye-sore buildings with a corresponding increase in traffic, noise + air pollution isn't fitting with Sugar Grove image. Concentrating on what Crown has had success with - smaller businesses (at I-88/Route 47) and homes would be more fitting and be a true benefit to the area.
- Do not do anything that will encourage more truck traffic on Route 47
- Please don't allow Crown to develop warehouses, truck stops, gas stations, etc in the I-88/Route 47 vicinity. Please keep it a natural area and farmland. Thank you for asking for opinions from the neighboring communities. It is very neighborly of you.
- I do not want what happened to Elwood to happen in Sugar Grove or any neighboring areas. Route 47 is already too busy with truck traffic. If Crown trucking gets to build it will destroy our property values and our relaxed way of living, which is what drew us to retire here in Sugar Grove.
- Please stop listening to the older residents that have been here forever and start listening and fostering opportunities for the younger ones. They deserve consideration; otherwise SG will be another town where the next generations don't want to live.
- No warehousing - too many trucks and pollution.

Insights (see crosstabs in Appendix 1 for detail):

- When asked to indicate their level of support for the draft comprehensive plan theme “Create destinations for community gathering and entertainment in Sugar Grove”, reported support was strongest with the youngest respondents (average score of 10/10 from respondents between the ages of 18-25) and support decreased steadily with age, with respondents between 26-55 years of age reporting an average level of support of 9/10, respondents between 56-70 years of age reporting an average level of support of 7/10, and respondents over 71 years of age reporting an average level of support of 6/10.

- The youngest survey respondents (those age 18-25) had the highest level of support for the draft comprehensive plan theme “Preserve Sugar Grove’s natural setting/feel with sustainable open space practices that focus on recreation, access, and resiliency”, with an average indicated level of support of 9.1/10 as compared to the total average indicated level of support among all age groups of 8/10.
- Sugar Grove’s youngest (18-25 years) and oldest (71-85 years) respondents indicated the highest level of support for the draft comprehensive plan theme “Protect Sugar Grove’s natural resources through strategic growth planning and a focus on long-term sustainability” with average scores of 9.3/10 and 9.1/10 as compared to the total average indicated level of support among all age groups of 8.1/10.
- Sugar Grove’s youngest respondents (18-25 years) showed the lowest level of support for the draft comprehensive plan theme “Improve connectivity throughout Sugar Grove and to nearby destinations” with an average score of 5/10 as compared to the total average indicated level of support among all age groups of 7/10.
- Some draft comprehensive plan themes saw lower levels of support from respondents who lived outside the community, as compared to support indicated from respondents who live within the community.
 - Respondents outside the community indicated an average level of support of 6.5/10 for the draft theme “Diversify Sugar Grove’s tax base and reduce the Village’s long-term costs” as compared to the total average indicated level of support among all respondents of 7.5/10.
 - Respondents outside the community indicated an average level of support of 6.7/10 for the draft theme “Enhance the local business climate” as compared to the total average indicated level of support among all respondents of 7.9/10.
- Approximately three times as many respondents within the 71-85 year age range selected “somewhat disagree” with the statement “these ten Comprehensive Plan themes reflect my priorities for the future of Sugar Grove” than any other age group. Though only 6.7% of respondents within this group selected “somewhat disagree”, with the rest selecting “neutral”, “somewhat agree”, or “strongly agree”.
- More respondents aged 26-39 years either “somewhat agree” or “strongly agree” with the statement “these ten Comprehensive Plan themes reflect my priorities for the future of Sugar Grove” than any other age group (67% versus 50-60%).
- Respondents who have lived in Sugar Grove the longest were the most likely to select “strongly disagree” in response to the statement “these ten Comprehensive Plan themes reflect my priorities for the future of Sugar Grove.” 7.5% of respondents within this group selected this response.
- The number of respondents who chose “strongly agree” in response to the statement “these ten Comprehensive Plan themes reflect my priorities for the future of Sugar Grove” increased with residential tenure, with the least tenured respondents (having lived in Sugar Grove for less than one year) selecting “strongly agree” at a rate of 18.8% and the most tenured respondents (having lived in Sugar Grove for over 21 years) selecting “strongly agree” at a rate of 34%.