

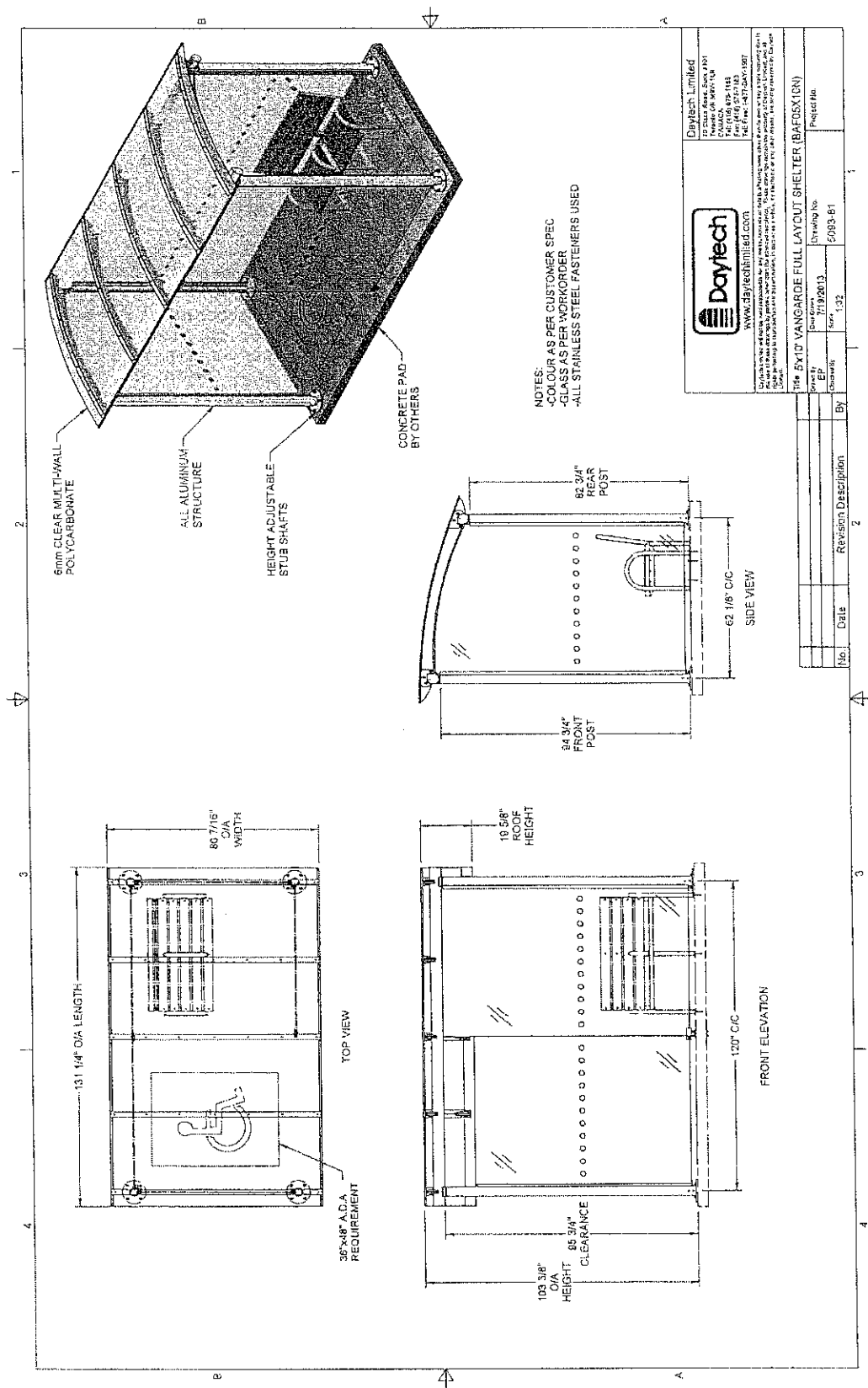
Page Two

Comments:

The shelters will occupy a footprint of approximately five by ten feet. They are of aluminum construction and powder coated to jet black. The wall panels consist of 3/8" safety glass. A two-seated bench is included with each shelter, and all the shelters are ADA compliant. A partial front panel is included which will add extra wind protection.

Village staff considered a variety of styles and manufacturers of bus shelters during the selection process. Some highly styled shelters were impressive but cost prohibitive at \$20,000 or more, while other inexpensive shelters lacked the desired appearance and functionality. The Vangarde shelters offer the best combination of style, durability and value. This company has had over 60,000 product installations across North America, including harsh weather environments such as Edmonton.

Cc: John Lockerby, Assistant Village Manager
Max Slankard, Public Works Director
Fred Schattner, Director of Engineering



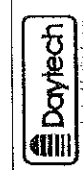
6mm CLEAR MULTI-WALL POLYCARBONATE

ALL ALUMINUM STRUCTURE

HEIGHT ADJUSTABLE STUB SHAFTS

CONCRETE PAD BY OTHERS

NOTES:
 -COLOR AS PER CUSTOMER SPEC
 -COLORS AS PER WORKORDER
 -ALL STAINLESS STEEL FASTENERS USED

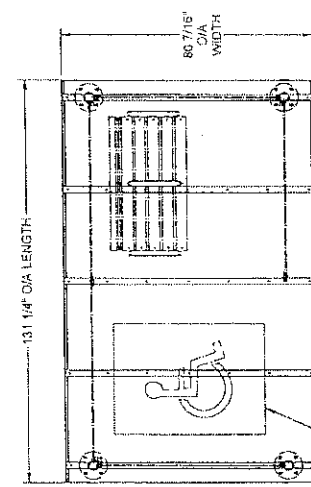


Daytech Limited
 10, 2000 Ave. Sun #301
 CANADA, ONTARIO, MISSISSAUGA
 Tel: (416) 276-1183
 Fax: (416) 276-1183
 Tel/Fax: (416) 276-1907
 WWW: daytechlimited.com

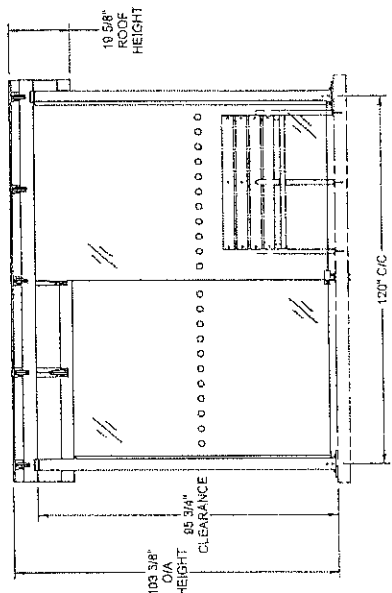
Daytech Inc. and its subsidiaries do not warrant or accept any liability for any damage or injury caused by the use of the products of Daytech Inc. or its subsidiaries. Daytech Inc. and its subsidiaries are not responsible for any damage or injury caused by the use of the products of Daytech Inc. or its subsidiaries. Daytech Inc. and its subsidiaries are not responsible for any damage or injury caused by the use of the products of Daytech Inc. or its subsidiaries.

Title: 5x10' VANGARDE FULL LAYOUT SHELTER (BAFD5X10CN)	
Drawn By: J192013	Drawing No: 5083-01
Scale: 1:32	Project No:

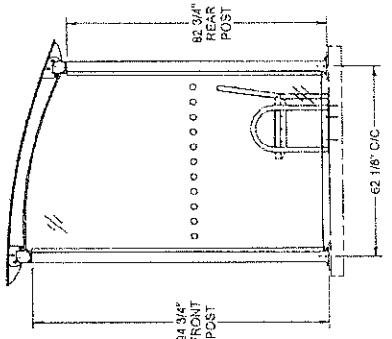
No.	Date	Revision Description	By



TOP VIEW



FRONT ELEVATION



SIDE VIEW