



COUNCIL MONTHLY REPORT

DEPARTMENT: PUBLIC WORKS

MONTH: JANUARY 2016

PUBLIC WORKS

During January Public Works staff responded to 109 requests for service submitted through the City's E-Gov software. Of those requests for service 16% were generated from outside City Hall.

Public Works staff ran the street sweeper four times in January. The table below records the debris recovered, diesel used, hours swept, and the volume of water used.

Date Swept	Diesel Used (gallons)	Hours Swept	Collected Amount (cubic yards)	Water Used (gallons)
1/07/2016	9	3	4	150
1/14/2016	10	4	4	150
1/21/2016	13	3	4	150
1/28/2016	10	4	4	250
JANUARY	42	14	16	700

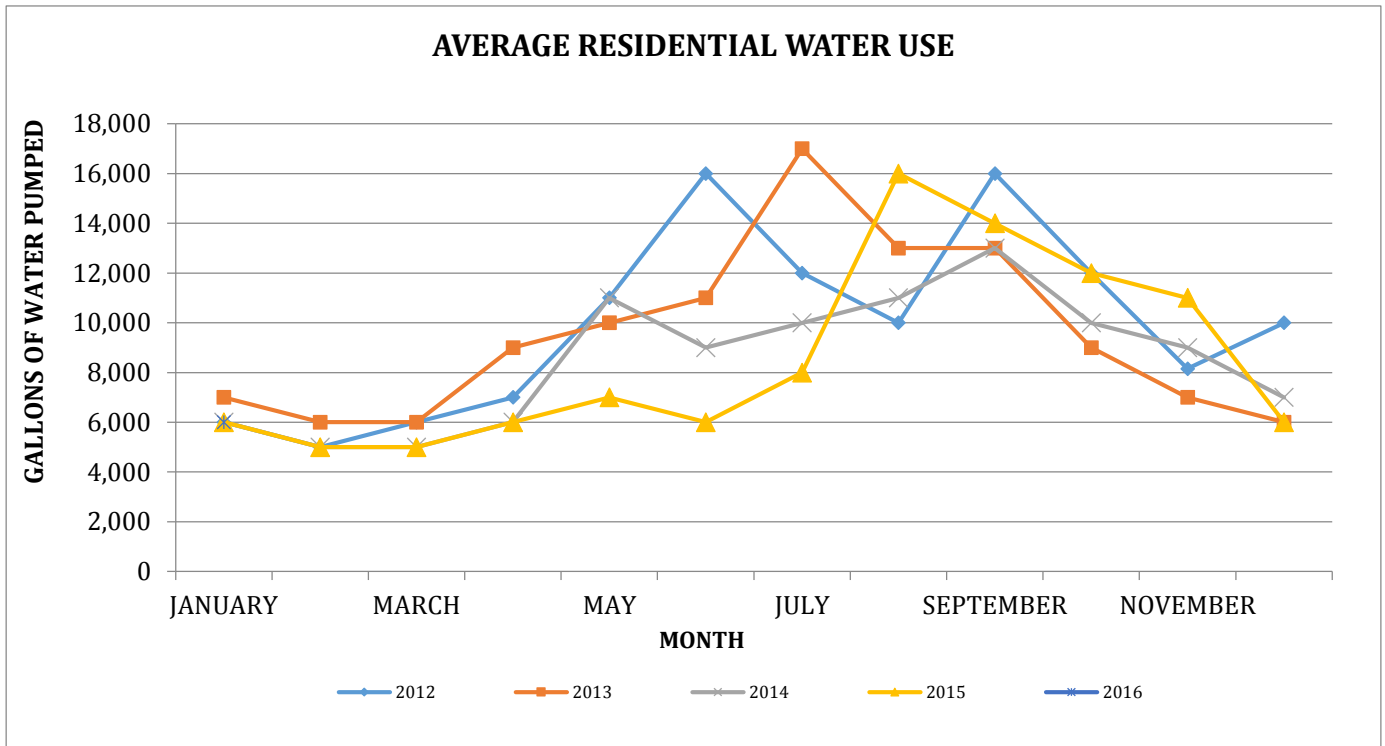
In January, there were three cuts of the irrigated areas (those areas of the City with sprinkler systems), two cuts of the non-irrigated areas and one cut to the I-45 Feeder. Once a week Brickman's staff checks these areas and picks up any debris.

The City hosted its third successful Polar Bear Plunge was on January 16th. There were 48 participants that consisted of 10 adults and 38 kids, 15 of those participants were non-residents. The water was a chilly 53°. Thanks to Jessica, the civic club, and our lifeguards for their help with this event.

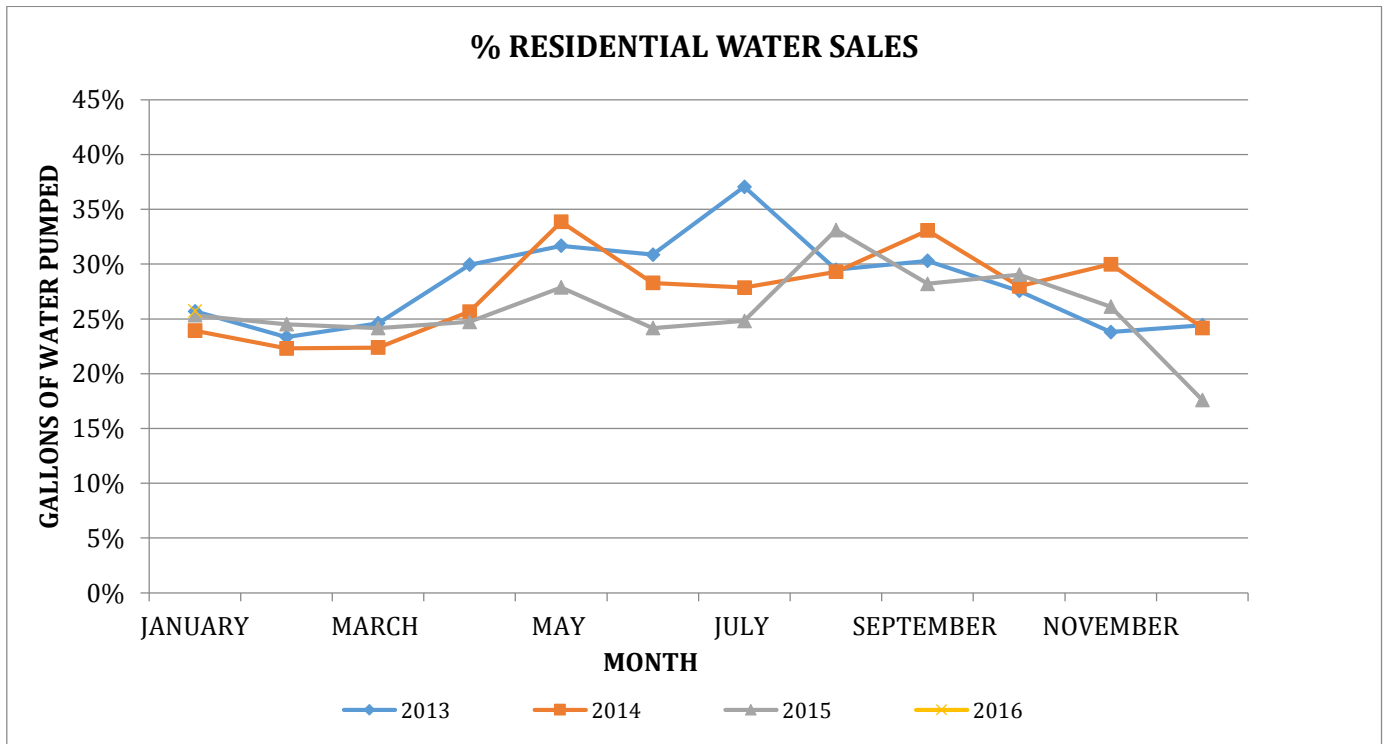
WATER & SEWER

Water and sewer data is reported on monthly reports as calendar months except for the average residential water use and the water loss data which are reported for the billing month as these data points are based on use data which is only available on a billing month cycle. Data reported with the utility billing report is reported as a billing month.

Groundwater production for the calendar month of January was approximately 20.1 million gallons with an average daily use of 650,000 gallons. The average residential water use for the billing month was 6,000 gallons. The chart below shows the average residential water use for each month compared to previous months.

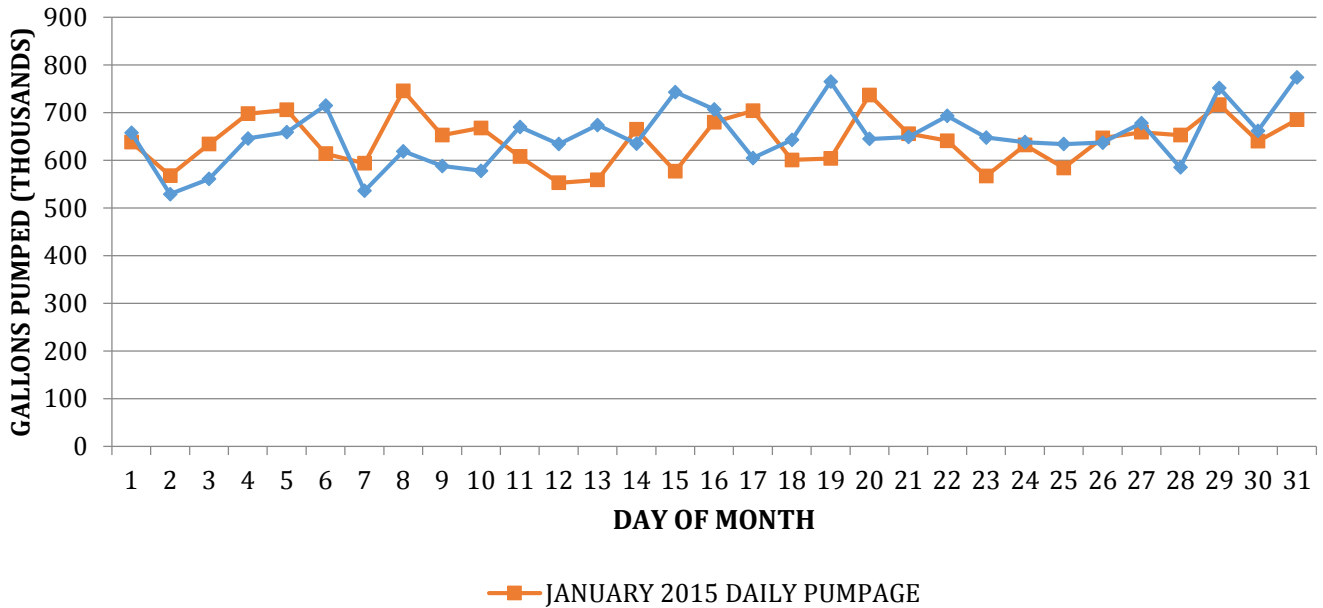


The chart below shows how much residential water sales have accounted for. In January 2015 residential water sales accounted for 25.33% of all water sales compared to 25.71% for the current month.

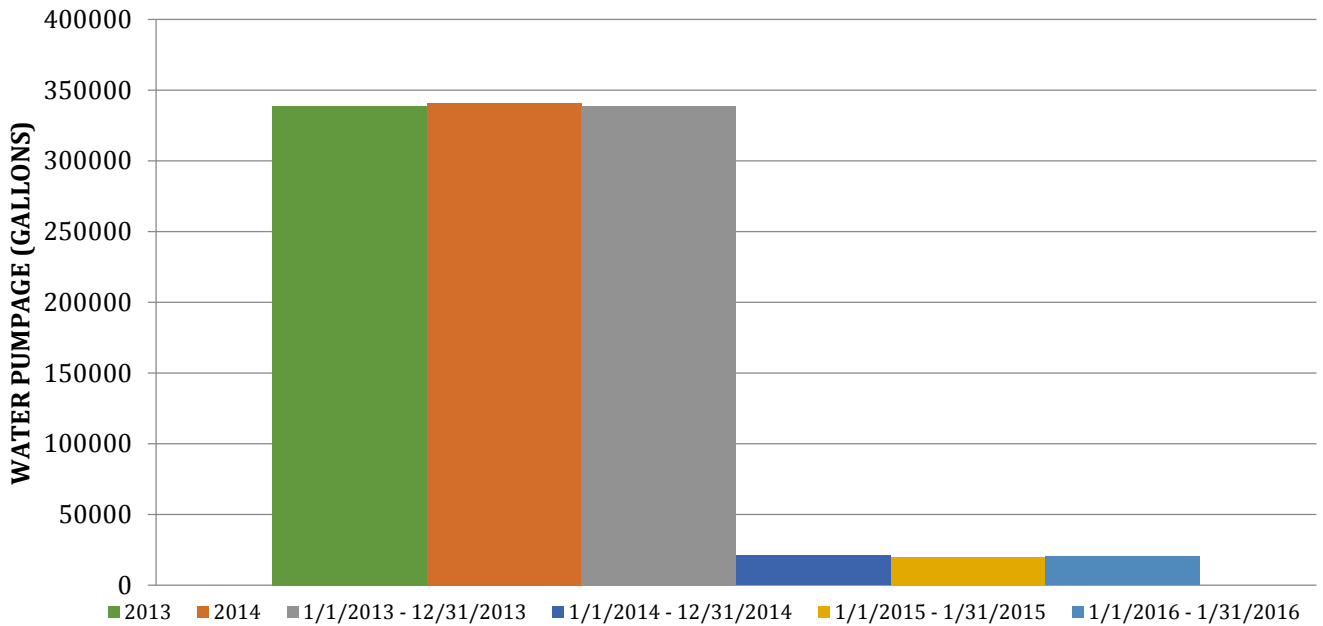


The next two charts show the daily pumpage data compared to previous years. Through January the City has pumped 20.2 million gallons of water this year. Last year during the same period the City pumped 19.9 million gallons.

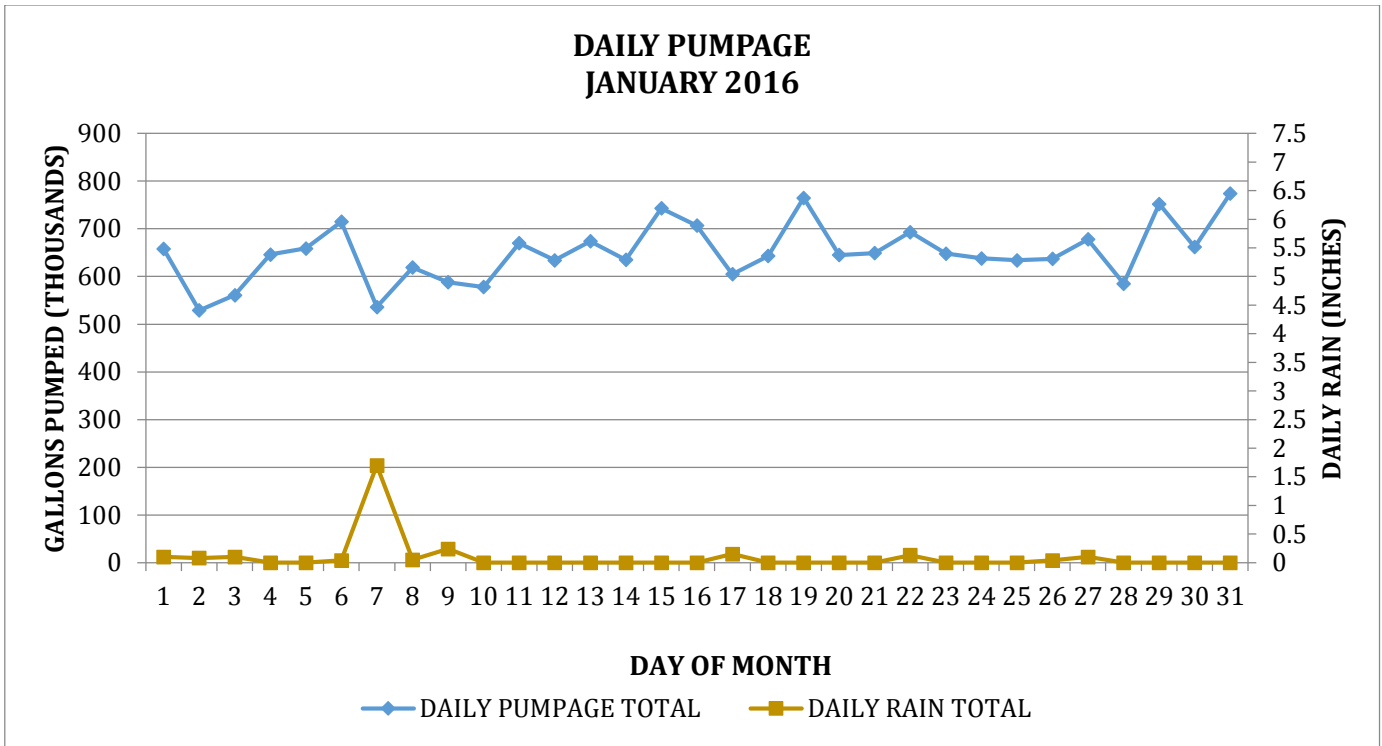
JANUARY COMPARISON DAILY PUMPAGE TOTAL



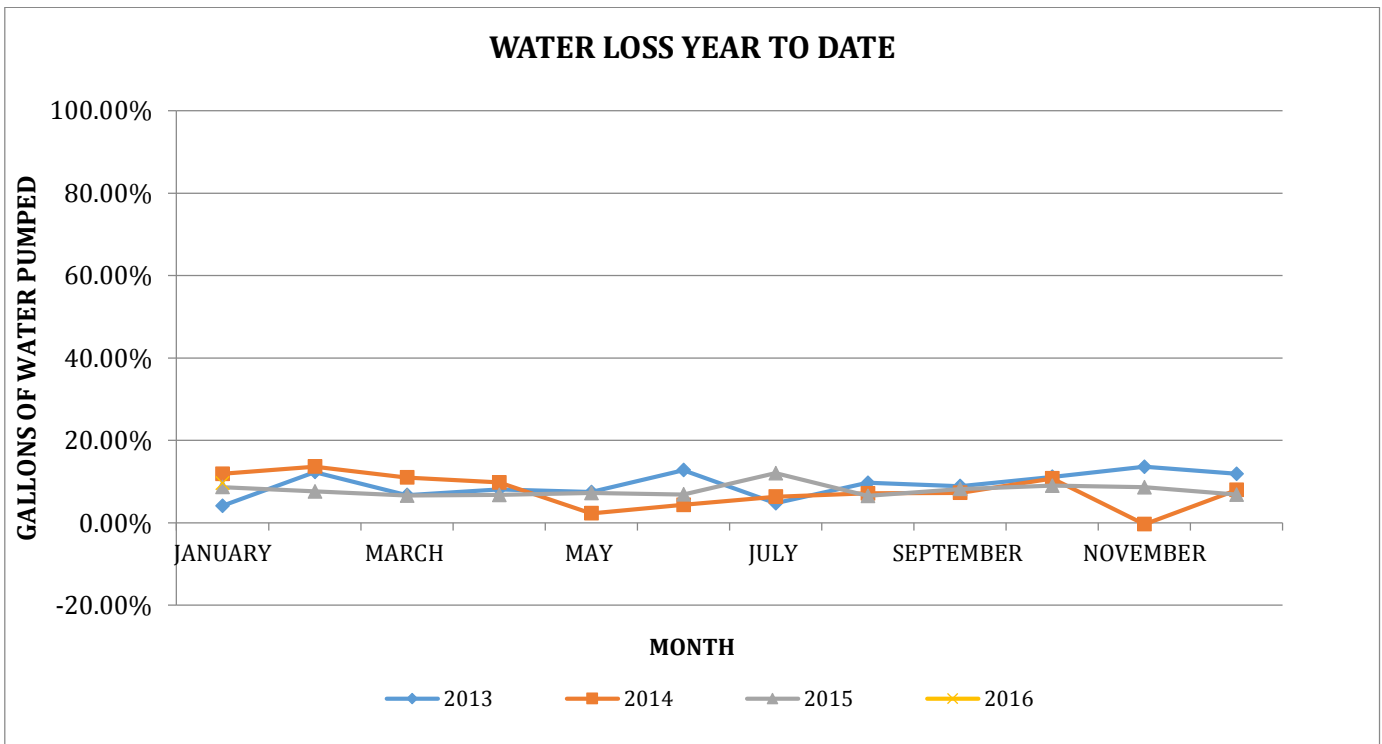
ANNUAL WATER PUMPAGE YTD TOTALS



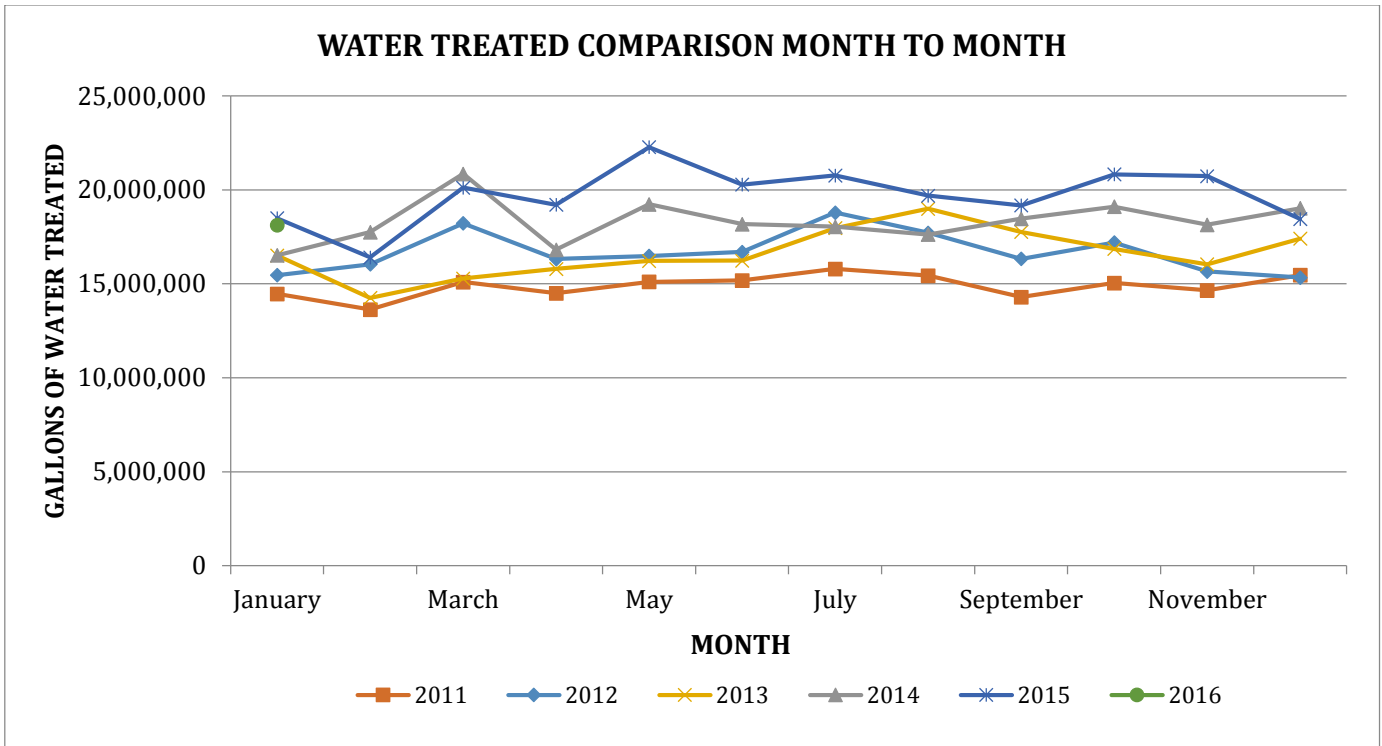
The next chart shows the daily pumpage compared with rain.



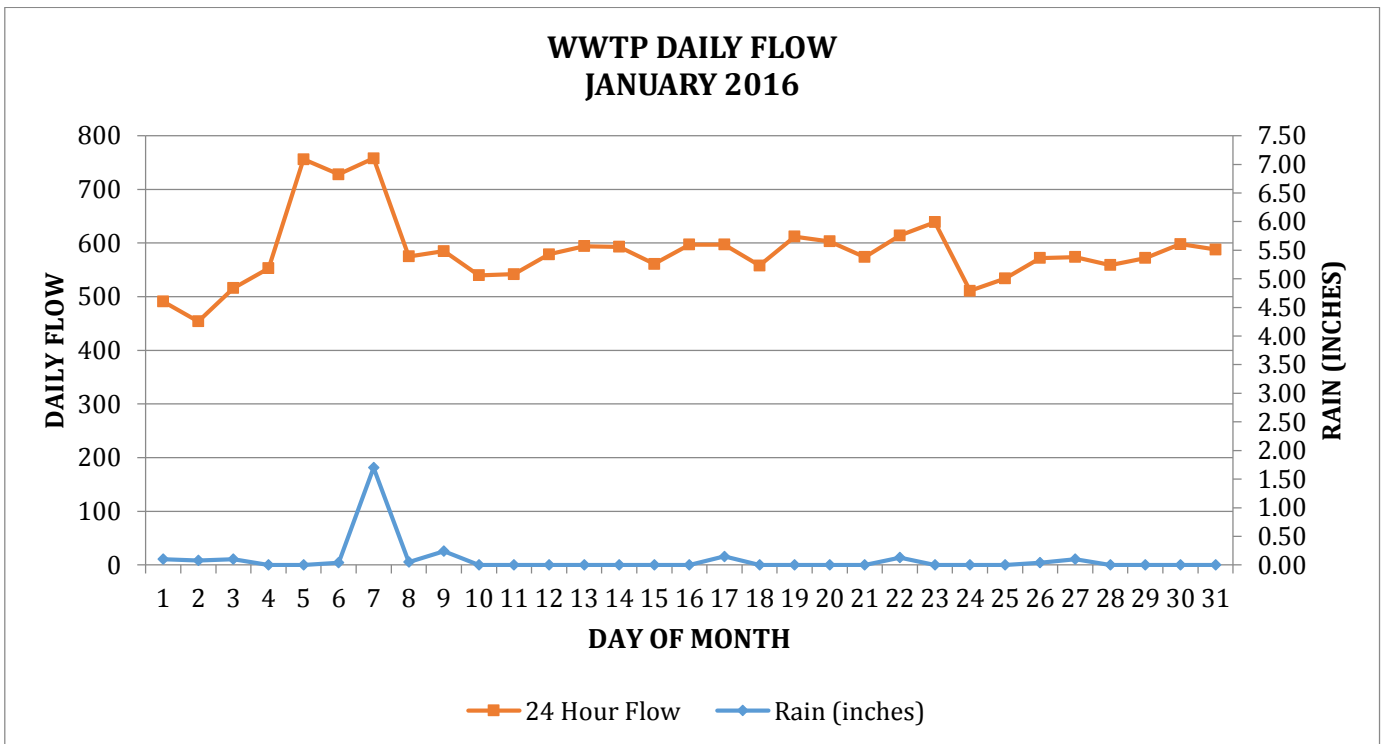
The water loss for the month of January was 9.59%. The chart below compares the loss rate to previous years.



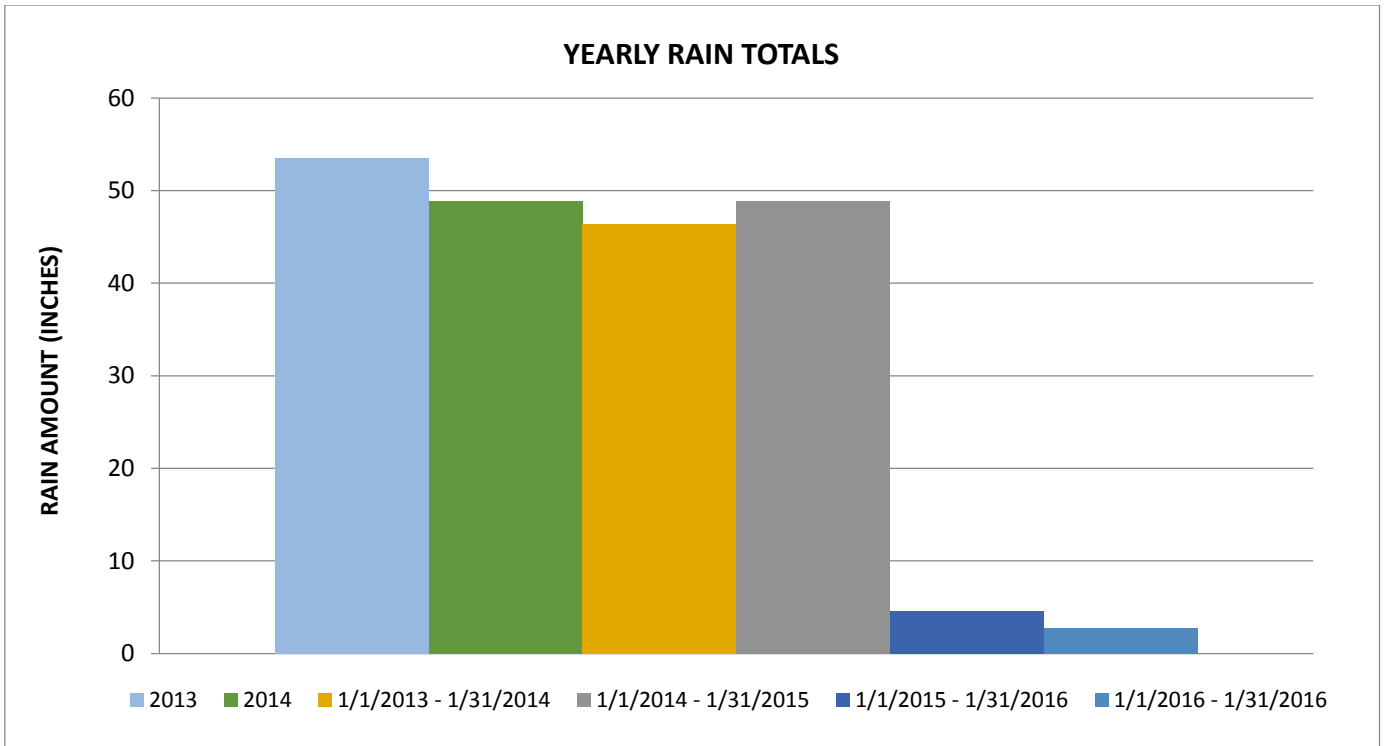
The next chart compares flow data at the wastewater treatment plant to previous years.



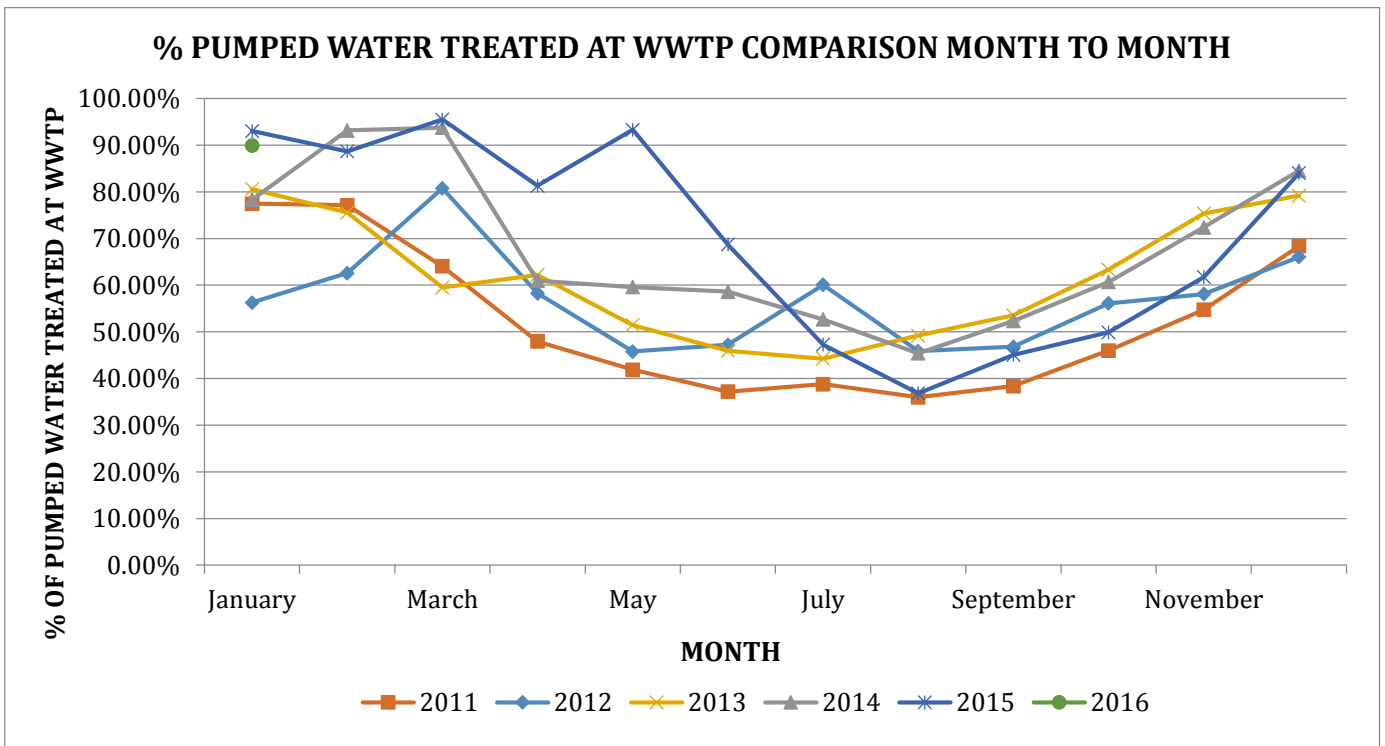
The City's wastewater treatment plant flowed 18.1 million gallons this month for an average of 584,742 gallons per day. Through the year, the City has treated 18.1 million gallons. The chart below shows the daily flow at the treatment plant and daily rainfall.



Through January 31 the City has registered 3.0 inches of rain at the treatment plant compared to 1.77 and 4.61 inches in previous years. The chart below summarizes rainfall from previous years.



The City "recovered" over 89.9% of the water pumped at the treatment plant. The chart below compares the monthly percent recovery to previous years.



SUBMITTED BY: Joseph Peart

