



A message from your Public Works Director

Yard flooding is common in Norwalk, as the land has much contour to it. Much of this land being formerly farm land and still surrounded by farmland, which generates a lot of rainwater run-off. For these reasons, many residential yards that are relatively low-lying collect rain water and create ponds. Simply put, water finds its way to the lowest ground.

I hope there are some helpful suggestions herein, which are realistic for you. When weighing options for your flooded yard, please consider, among other things, initial cost, maintenance costs, replacement costs, possible side effects (will this negatively impact my neighbor? will this option direct more water toward my house?) and environmental benefits. Feel free to contact my office when exploring these options.

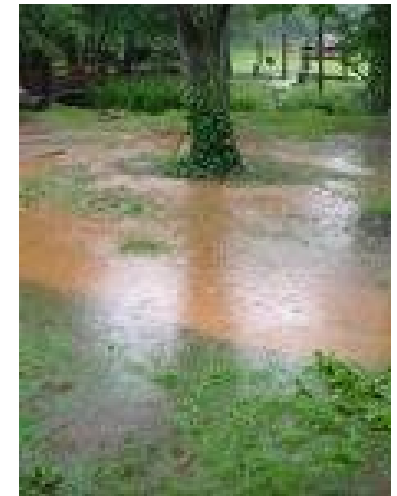
City of Norwalk, OH

42 Woodlawn Avenue
Norwalk, Ohio 44857

Phone: (419) 663-6715
Fax: (419) 663-6716
E-mail: streetsuper@neo.rr.com

Yard Flooding Options

➤➤ City of Norwalk, OH



Making Norwalk Stronger Through Public Works

Tel: 419-663-6715

Tel: 419-663-6735

French Drains

French Drains are simply yard basins, strategically placed in the lowest lying area of your yard. These Drains should be dug 6-8 feet deep with a backhoe or excavator, then backfilled with large stone, graduating the sizes smaller as you get near ground level. The water gets into these drains and dissipates through the various levels of soil. The size of these can vary. Contact a local excavator for more details.

Storm Sewers

Many streets have separate storm sewer systems that houses can be tied into. Storm sewers are intended to take rain water from roads and properties. However, many times it is not feasible or practical for homeowners to run yard drains (basins) all the way to the street.

If you would like to explore tying into the City's storm sewer system, please contact the Street Department at 419-663-6715.



Rain Gardens

What is a rain garden? A rain garden is an attractive landscaped area planted with perennial naïve plants which don't mind getting "wet feet". Built in a bowl shape, a rain garden is designed to increase infiltration allowing rain and snowmelt to seep naturally into the ground quickly. Benefits of rain gardens are multiple" they recharge groundwater supply, prevent water quality problems, provide habitat for birds and butterflies, and are great looking landscape features. Rain gardens have proven to take 30% more water than grass alone.

Recent studies have shown that up to 70% of the pollution in our streams, rivers and lakes is carried there by run-off from practices we carry out in our own yards and gardens. Some of the common "non-point source pollutants" from our yards that end up in local waterways include soil, fertilizers, pesticides, pet wastes, grass clippings and other yard debris.

If a rain garden is of interest to you, please visit the City's website at www.norwalkoh.com and look for the "Rain Garden Manual for Homeowners" or call the Public Works Director at 419-663-6735.



Landscaped Mounds

As they are titled, landscaped mounds are simply raised mounds of earthen material that are either covered in grass, or landscaped with mulch, stones, bushes, shrubs or trees.

Landscape mounds have been used for centuries to divert, direct, control and retain water. These can be installed in residential applications for building up low lying areas, or directing flowing water to other areas. Please check with your neighbor before placing a landscaped mound along your property line, as the water you may be diverting or "damming" may adversely affect them.

Landscape mounds can be done by a homeowner and relatively inexpensively. They can also add beauty and value to your home.

For more information on landscaped mounds, please contact the Public Works Director at 419-663-6735.

