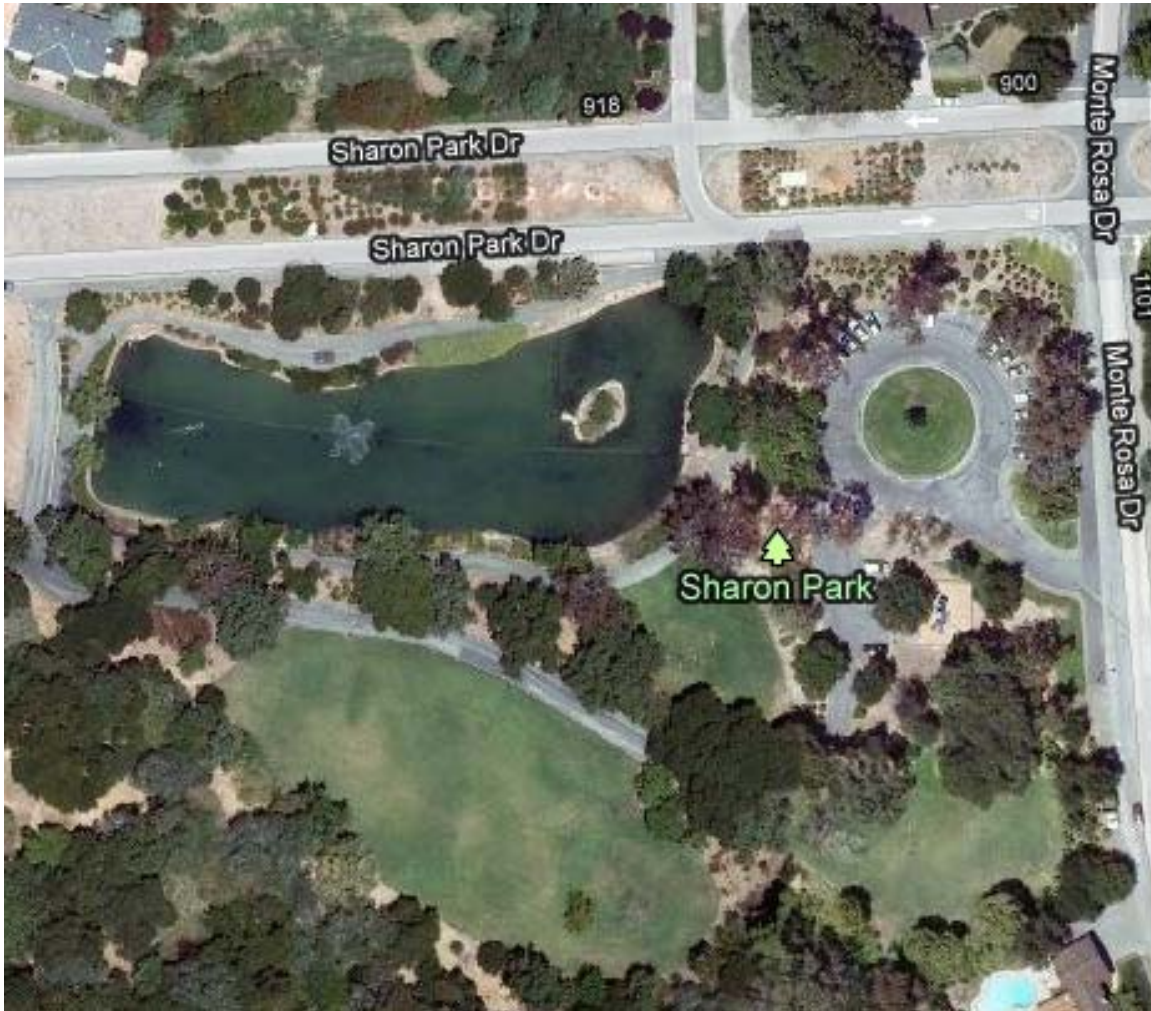


# Sharon Park



**Details:** Located in Sharon Heights, close to I-280 and Sand Hill Road, the park provides a beautiful spot for wedding ceremonies. The park is 9 acres and includes natural wooded area, picturesque lake, and landscaped slopes. In addition, there is a gazebo, shaded picnic areas, playground, and walkways with benches. Parking is limited and there are no restrooms. The park can be reserved for wedding ceremonies only. Otherwise, the park is open to the public as first-come, first-serve.