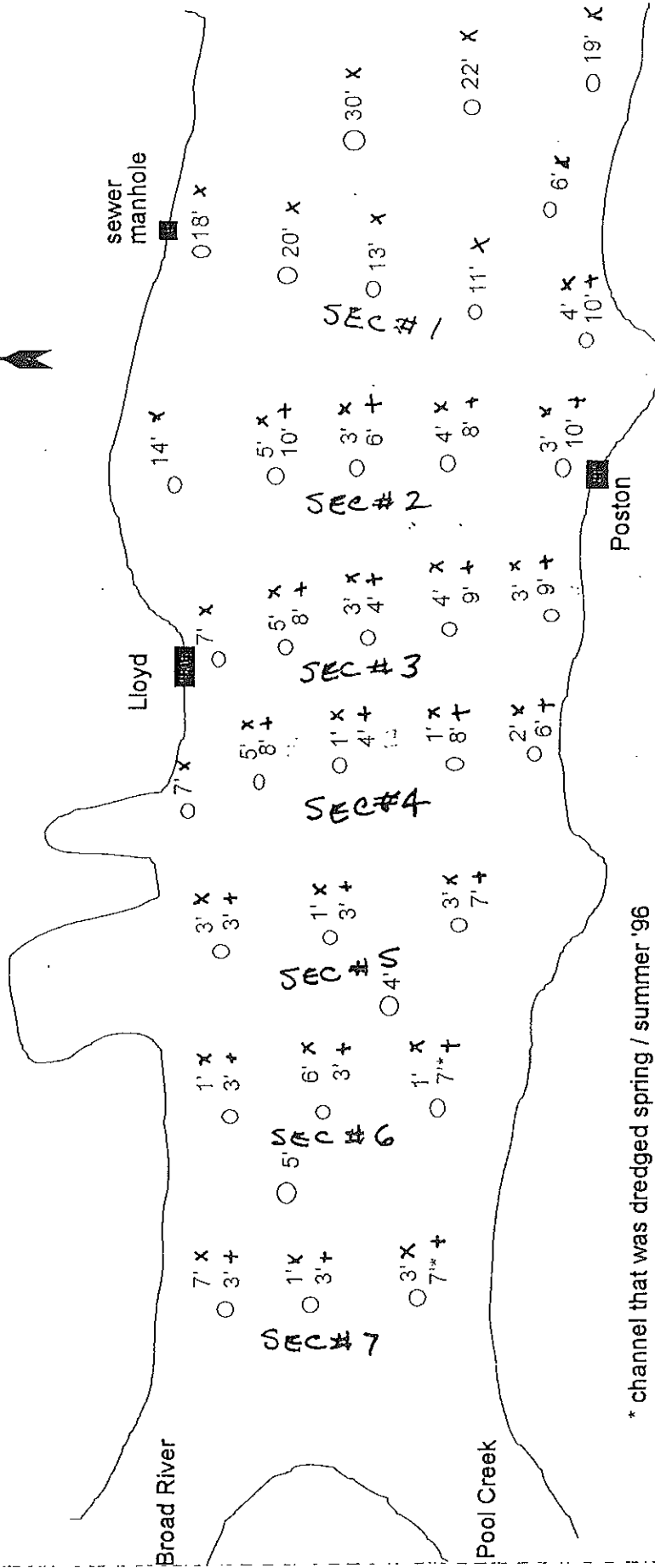
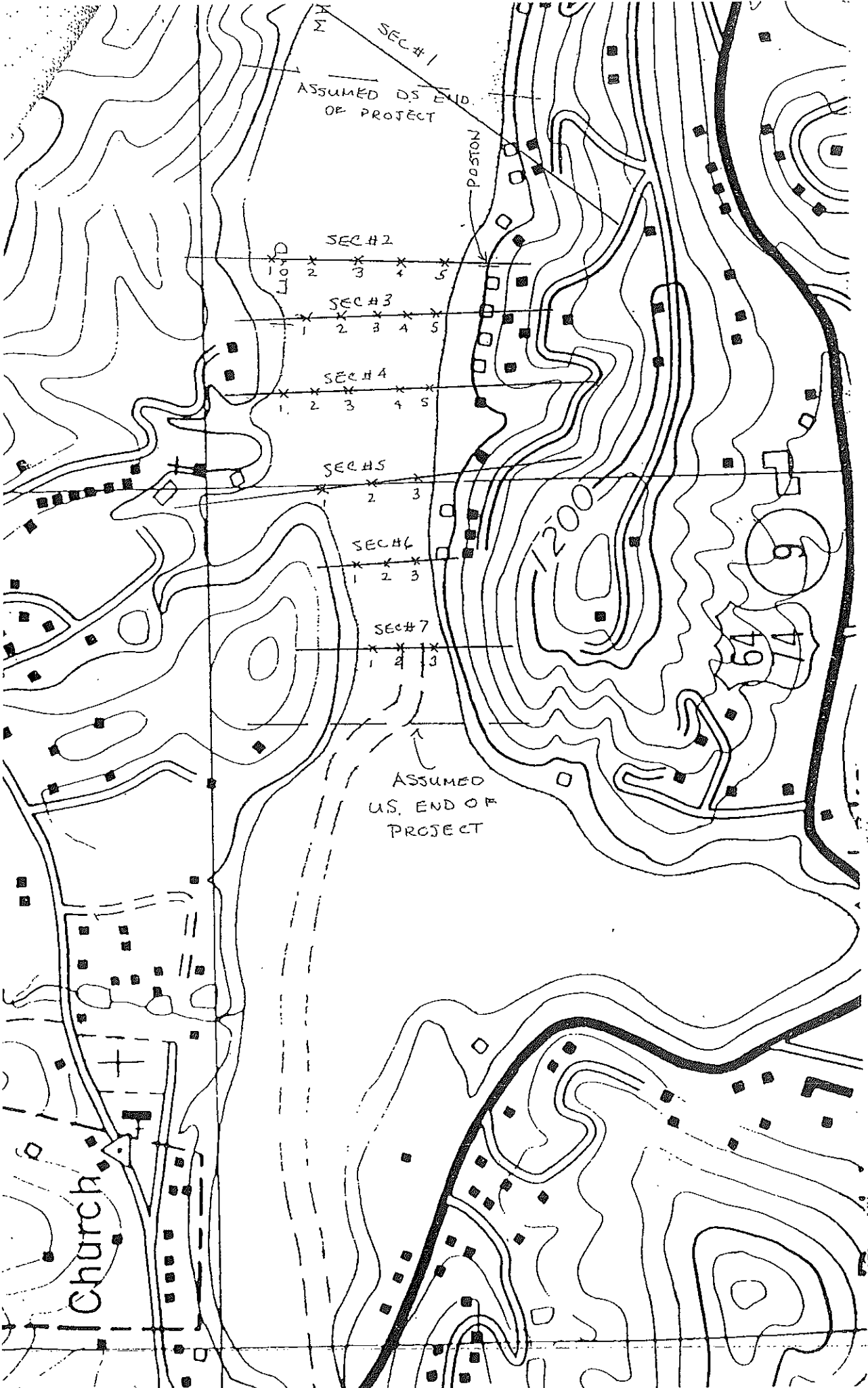


Lake Lure Depth Profile Comparison

- x ● October 1996
- + ● April 1996
- ○ July 1973



* channel that was dredged spring / summer '96



SEC #1

ASSUMED DS. END OF PROJECT

SEC #2

LLOYD

SEC #3

SEC #4

SEC #5

SEC #6

SEC #7

ASSUMED US. END OF PROJECT

Church

POSTON

1200

64

10/15/94
 Q7113

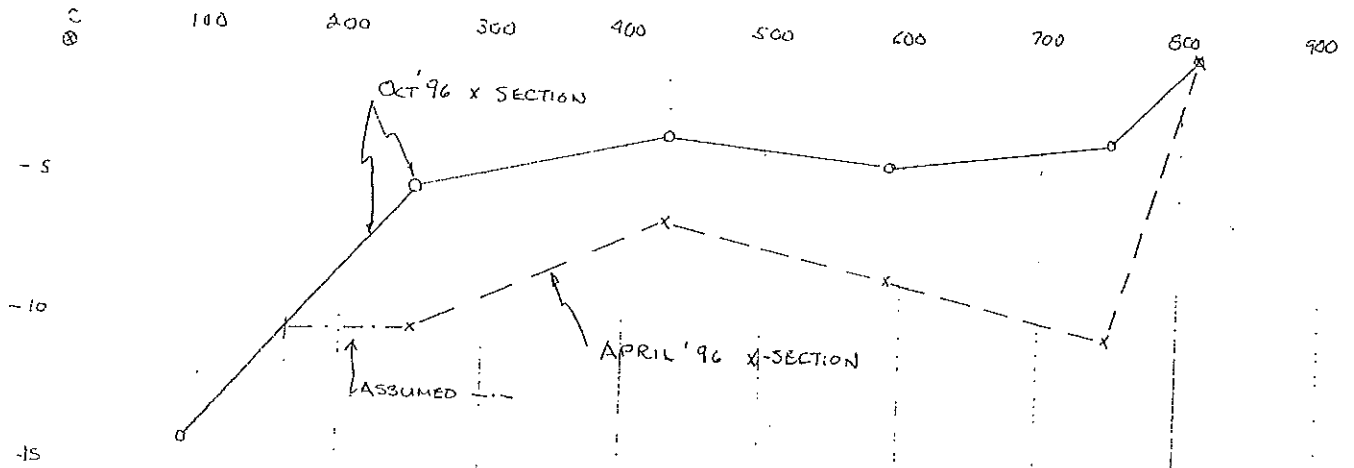
LAKE CURVE VOLUME CALCULATIONS

SECTION 2			
Distance (from left bank)	Ele 4/96	Ele 10/96	Ele 16/96
250'	100'	90'	810'
-10' / -5	3% / -7	? / -14	-8' / -4
430'			750' 810'
			-10' / -3
			0%
SECTION 3			
Distance (from left bank)	Ele 4/96	Ele 10/96	Ele 16/96
230'	100'	90'	810'
-8 / -5	3% / -7	0%	-9' / -3
360'			580' 620'
			-4' / -3
			0%
SECTION 4			
Distance (from left bank)	Ele 4/96	Ele 10/96	Ele 16/96
180'	60'	60'	640'
-8 / -5	3% / -7	0%	-8' / -1
300'			600' 640'
			-4' / -1
			0%
SECTION 5			
Distance (from left bank)	Ele 4/96	Ele 10/96	Ele 16/96
680'	490'	490'	900'
-3' / -1	3% / -3	0%	-8' / -1
			-4' / -2
			900' 900'
			-7' / -3
			0%
SECTION 6			
Distance (from left bank)	Ele 4/96	Ele 10/96	Ele 16/96
170'	60'	60'	340'
-3' / -1	0%	0%	-7' / -1
			340' 340'
			-3' / -6
			0%
SECTION 7			
Distance (from left bank)	Ele 4/96	Ele 10/96	Ele 16/96
140'	60'	60'	350'
-3' / -7	0%	0%	-7' / -3
			350' 350'
			-3' / -1
			0%

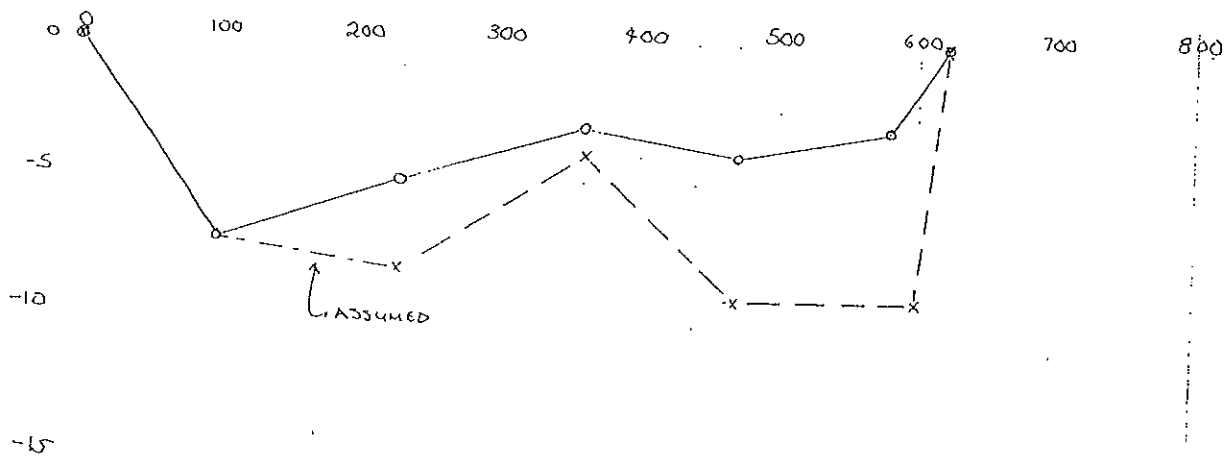
COMPARITIVE X-SECTIONS @ LAKE LURE

10/15/96
AMB
Pg 1 of 2

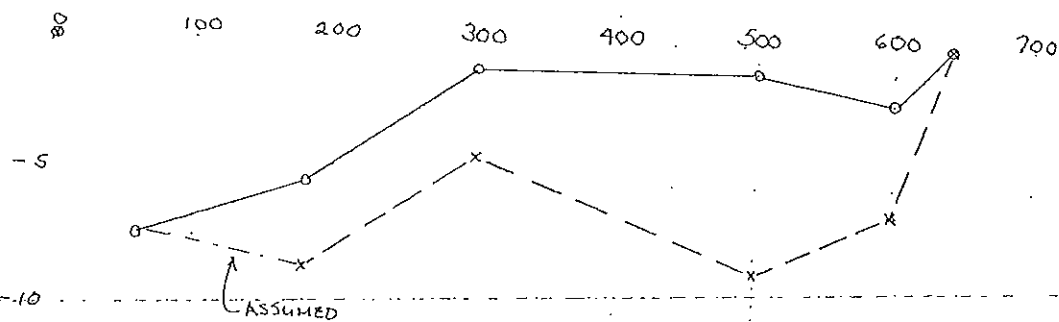
X-SECTION #2



X-SECTION #3



X-SECTION #4

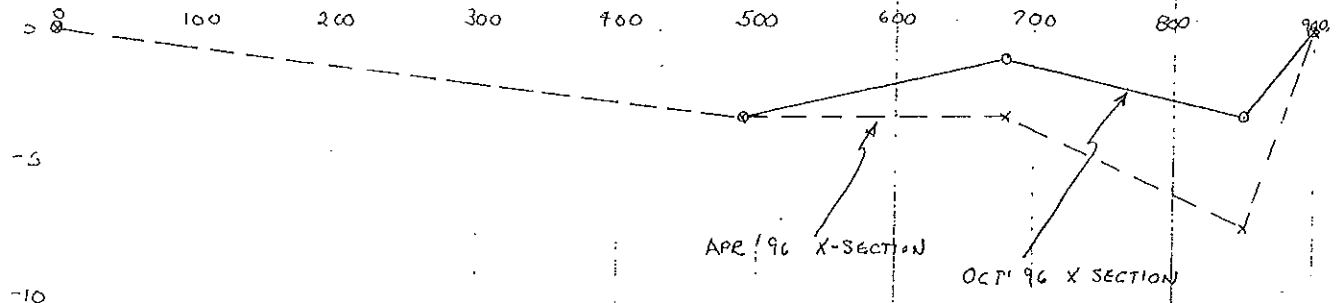


X-SECTION #5

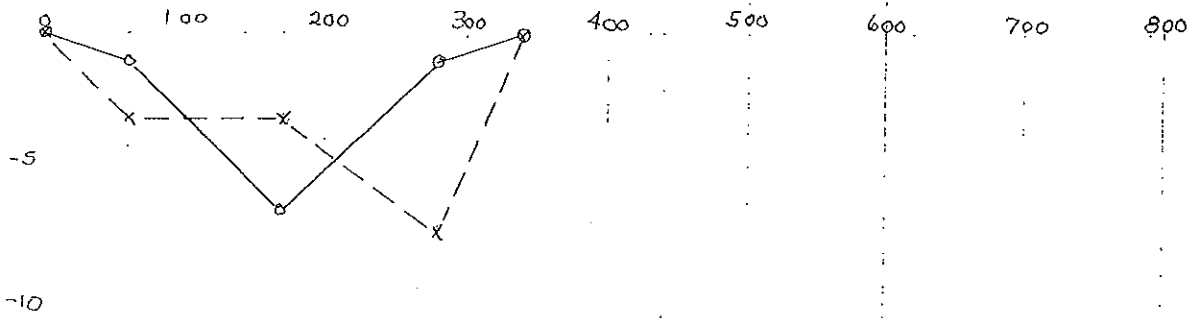
10/15/96

amb

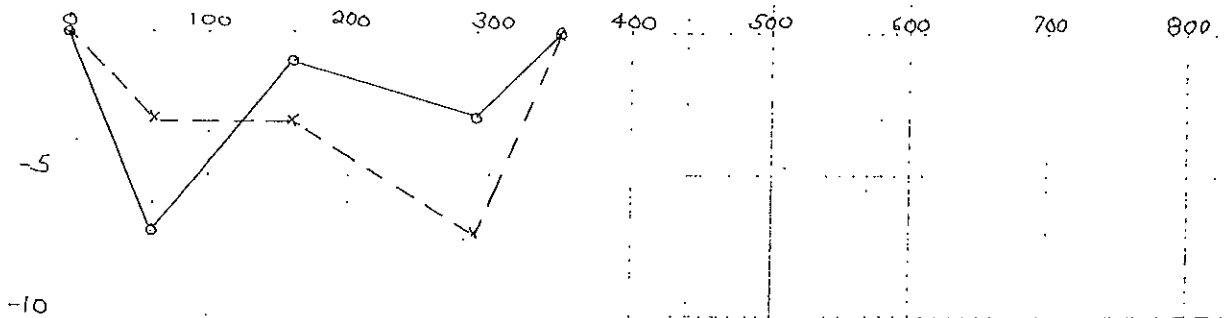
Pg 2 of 2



X-SECTION #6

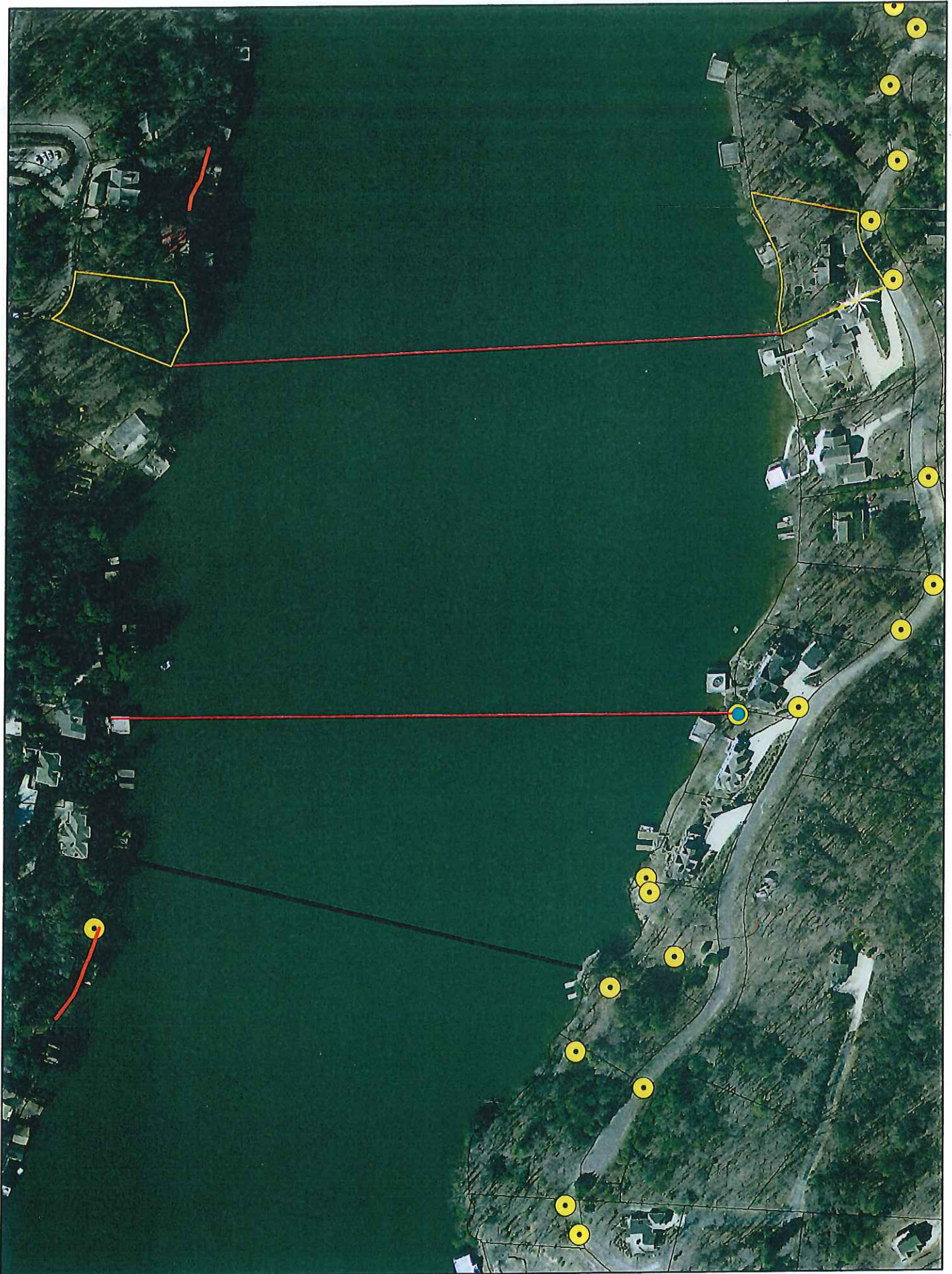


X-SECTION #7



BEGINNING X-SECTION	① AREA DEPOSITED	② AREA DEPOSITED	③ NET AREA DEPOSITED	AVERAGE NET AREA	Average Area (width x length)	④ DISTANCE BETWEEN X SEC	⑤ X ² +27 VOLUME BETWEEN X SEC	CUMULATIVE TOTAL
	∅	∅	∅	1143	400 500 1200 2.4	700	29620	29620
(- SEC # 2	(4.570") 2285		2285	1900	715 3.01	220	15481	45101
(- SEC # 3	(3.030") 1515	∅	1515	1842	630 4.05	280	19102	64203
(- SEC # 4	(4.340") 2170	∅	2170	1480	770 6.18	350	19185	83388
(- SEC # 5	(1.580") 790	∅	790	557	620 4.27	300	6194	89582
(- SEC # 6	(0.980") 490	(0.330") 165	325	318	315 8.01	330	3887	93469
(- SEC # 7	(1.100") 550	(0.48") 240	310	155	350 3.06	300	1722	95191
END X SEC			∅		3060 1.53		ROUNDED	95000 CY

Silt Shelf Main Channel



1 inch = 200 feet