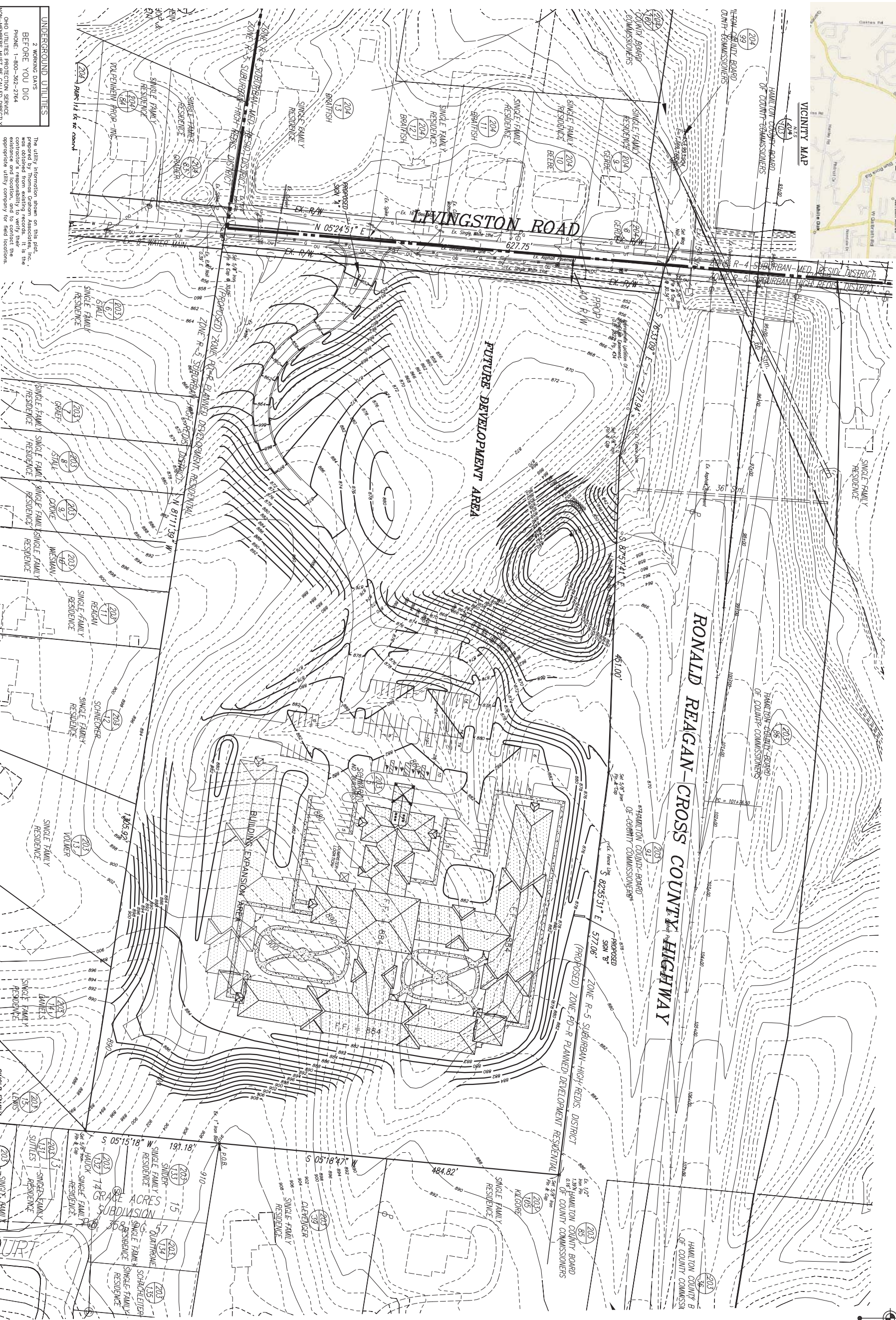
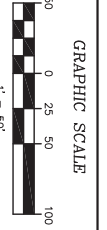


- GENERAL NOTES**
1. SEE LANDSCAPE PLANS (BY OTHERS) FOR DETAILS
 2. SEE SEPARATE LIGHTING PLAN (BY OTHERS) FOR DETAILS OF LIGHT POLES AND LIGHT FIXTURES.

EXISTING ZONING - R-5 SUBURBAN HIGH RESIDENTIAL DISTRICT
 PROPOSED ZONING - PD-R PLANNED DEVELOPMENT RESIDENTIAL
 SITE AREA = 19,270 ACRES (GROSS) / 18,695 ACRES (NET) (40' RW)
 BUILDING S.F. FOR INITIAL PHASE = 60,000 S.F.
 BUILDING EXPANSION AREA = 24,000 S.F.
PARKING ANALYSIS
 REQUIRED = 1 PARKING SPACE / 2 BEDS (148 BEDS=74 SPACES)
 PROVIDED = 74 SPACES
 PROVIDED = 100 SPACES
ISP = 24%



UNDERGROUND UTILITIES
 2 WORKING DAYS BEFORE YOU DIG
 PHONE: 1-800-362-2764
 OHIO UTILITIES PROTECTION SERVICE
 NON-EMERGENCY: 800-362-2764
 EMERGENCY: 614-525-1234

<p>APPLICANT LIBERTY HEALTH CARE CORPORATION 7445 LIBERTY WOODS LANE DAYTON, OH 45459-3911</p>	<p>PRELIMINARY DEVELOPMENT PLAN LIBERTY NURSING CENTER OF COLERAIN SECTION 14, TOWN 2, E. RANGE 1 COLERAIN TOWNSHIP HAMILTON COUNTY, OHIO</p>	<p>THOMAS GRAHAM ASSOCIATES, INC. Engineers Surveyors</p> <p>803 Compton Road Cincinnati, Ohio 45231 513-521-4700 Fax # 521-2539</p>	<p>Date: OCT. 13, 2010 Scale: 1" = 50' Job No: 7711 Revisions: No. Date</p>
--	--	--	---

ACAD FILENAME: 7711_STUDY2.DWG