



Benchmark Report

2012



Comparison Sheets

- **14-department sample**
- **Population**
 - Colerain third highest
- **Size (square miles)**
 - Largest coverage area
- **Number of fire stations (5)**
- **Closer to cities of Hamilton & Covington in emergency call data**

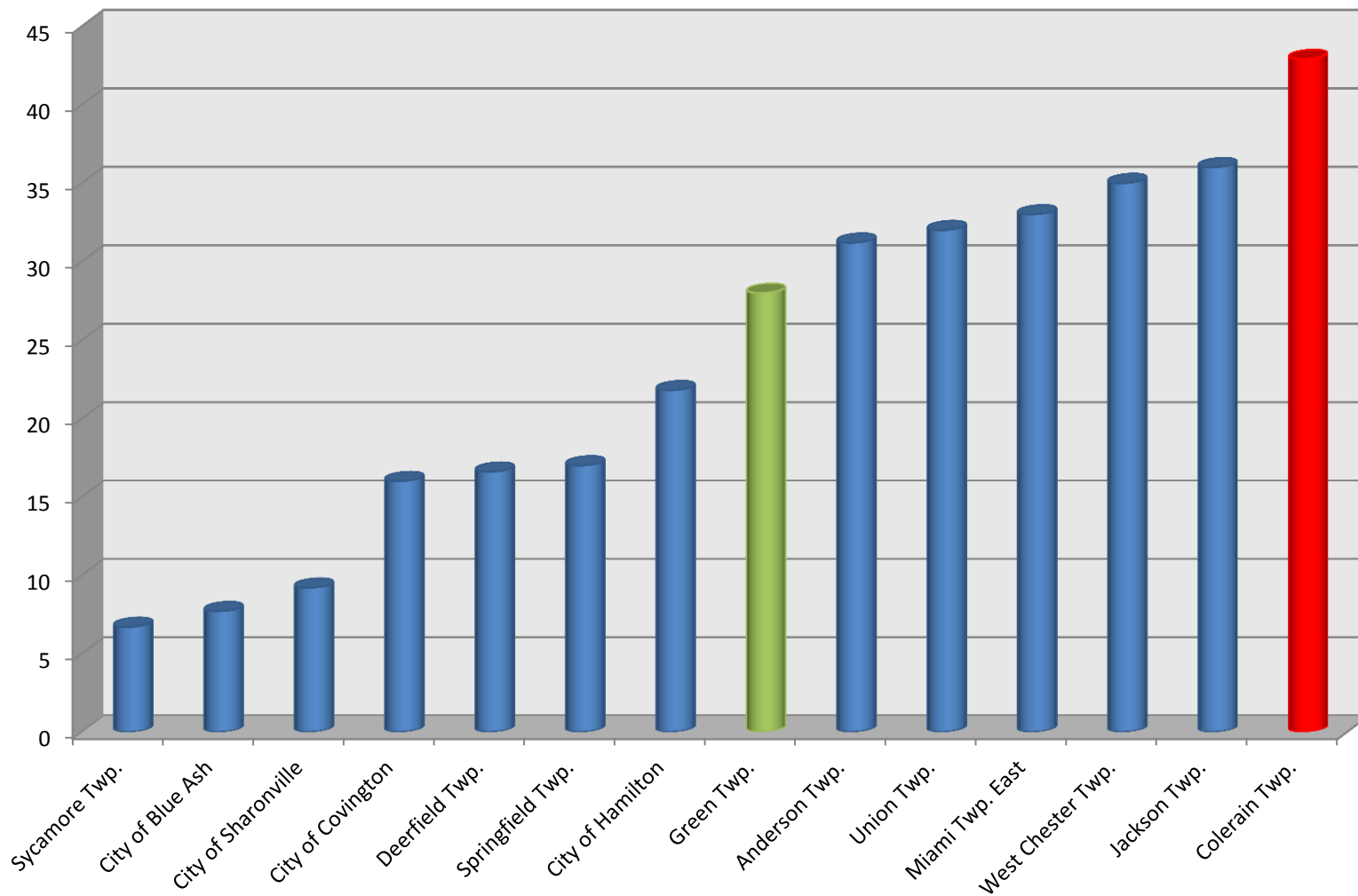


Comparison Sheets Cont.

- **Minimum, Maximum, & Typical Staffing**
- **FT/PT staffing ratio**
 - **CTFD lowest ratio**
- **Explanation for metrics on p. 2 in Appendix C**
 - **Column headings & labels**

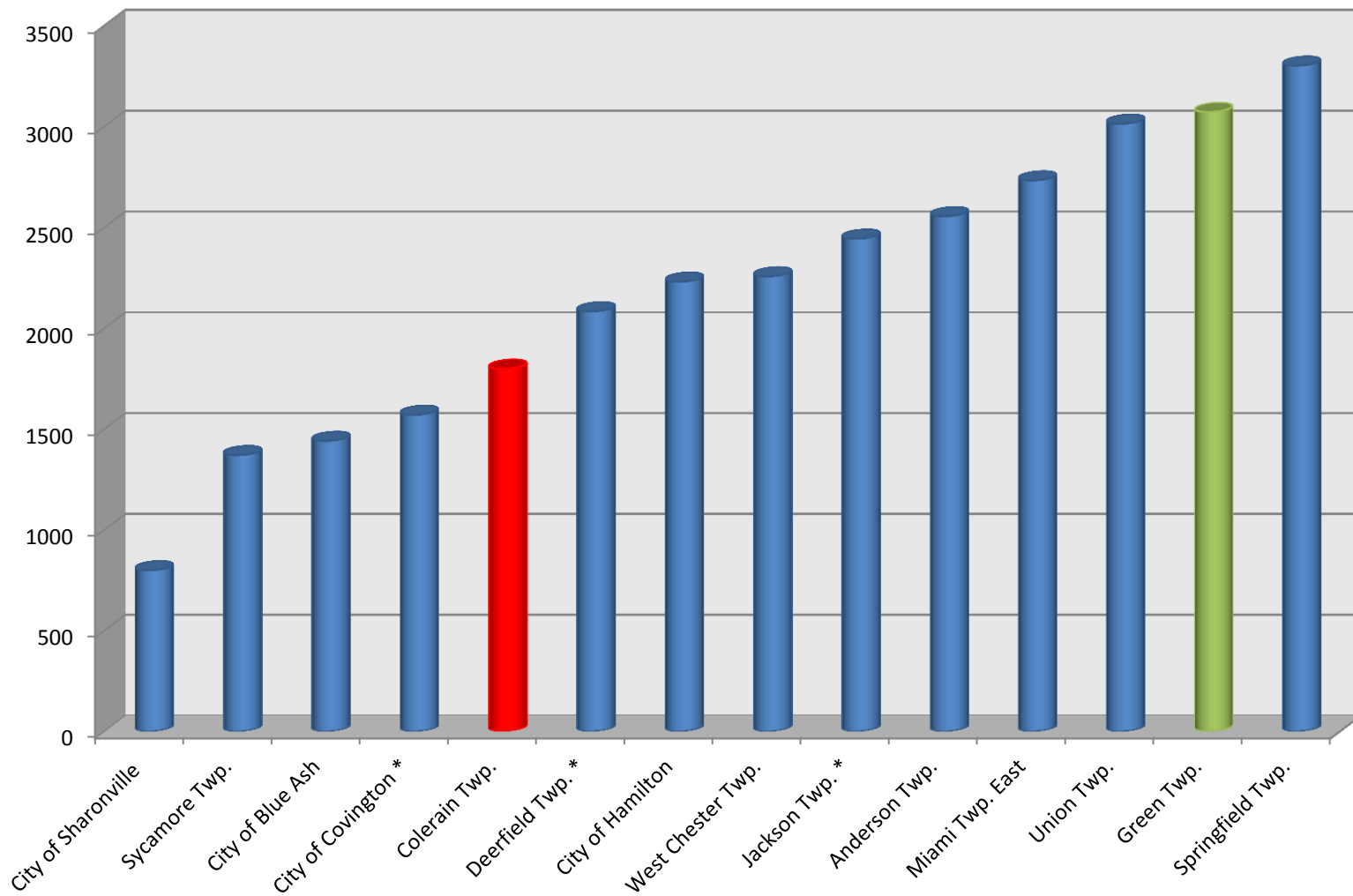


Fire/EMS Protection Area Square Miles



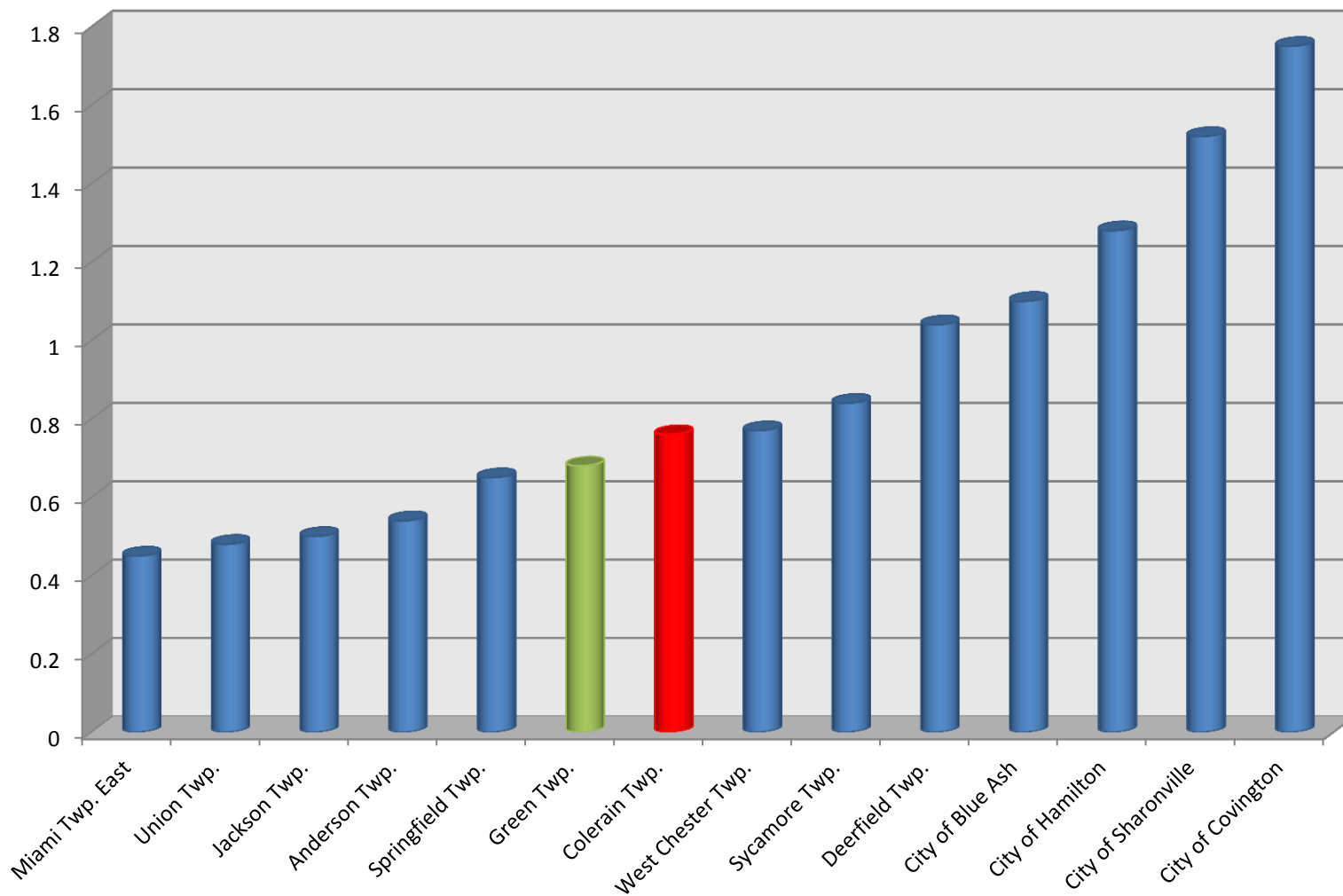


Firefighters per Capita



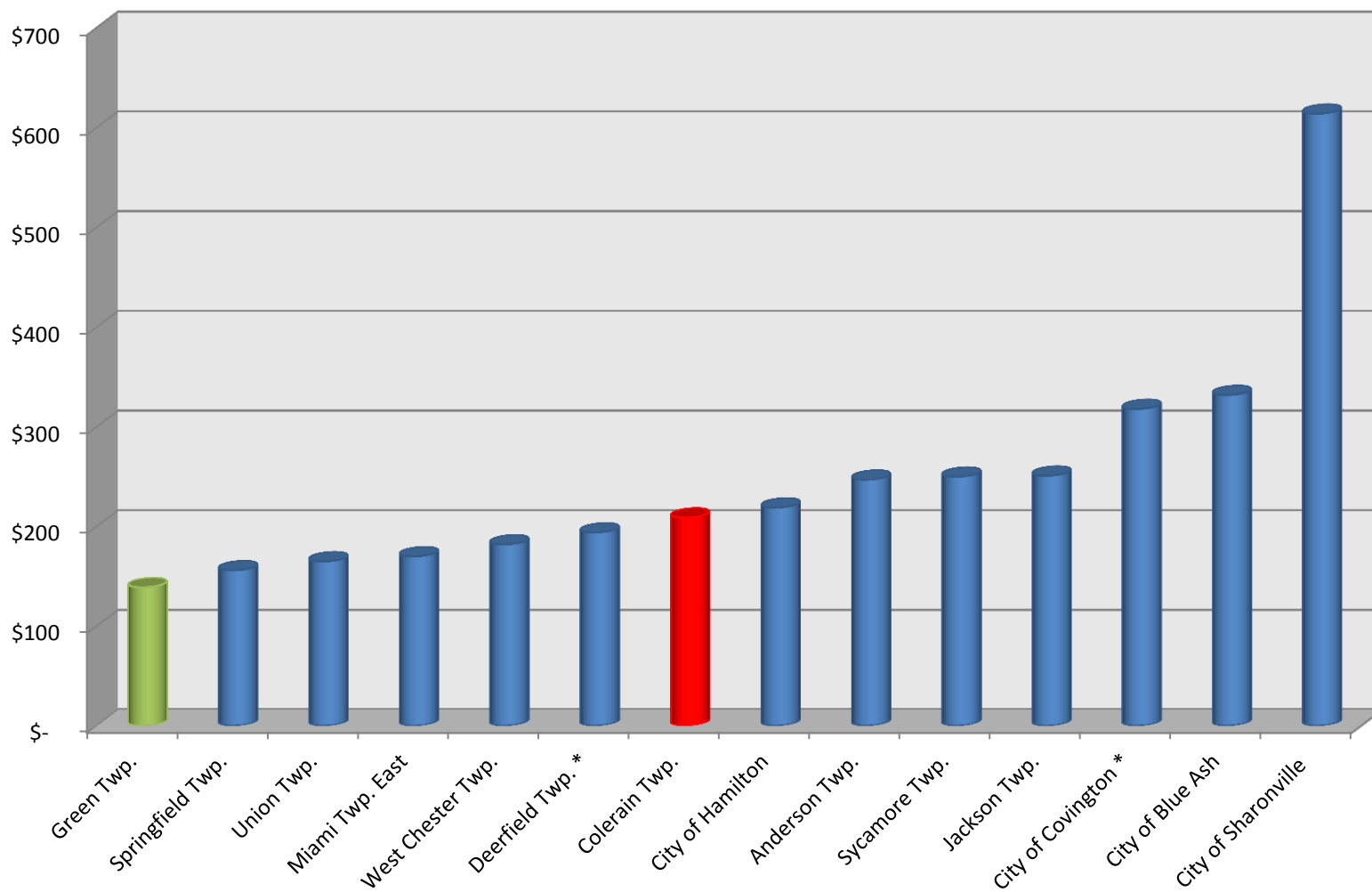


Number of Firefighters per Square Mile



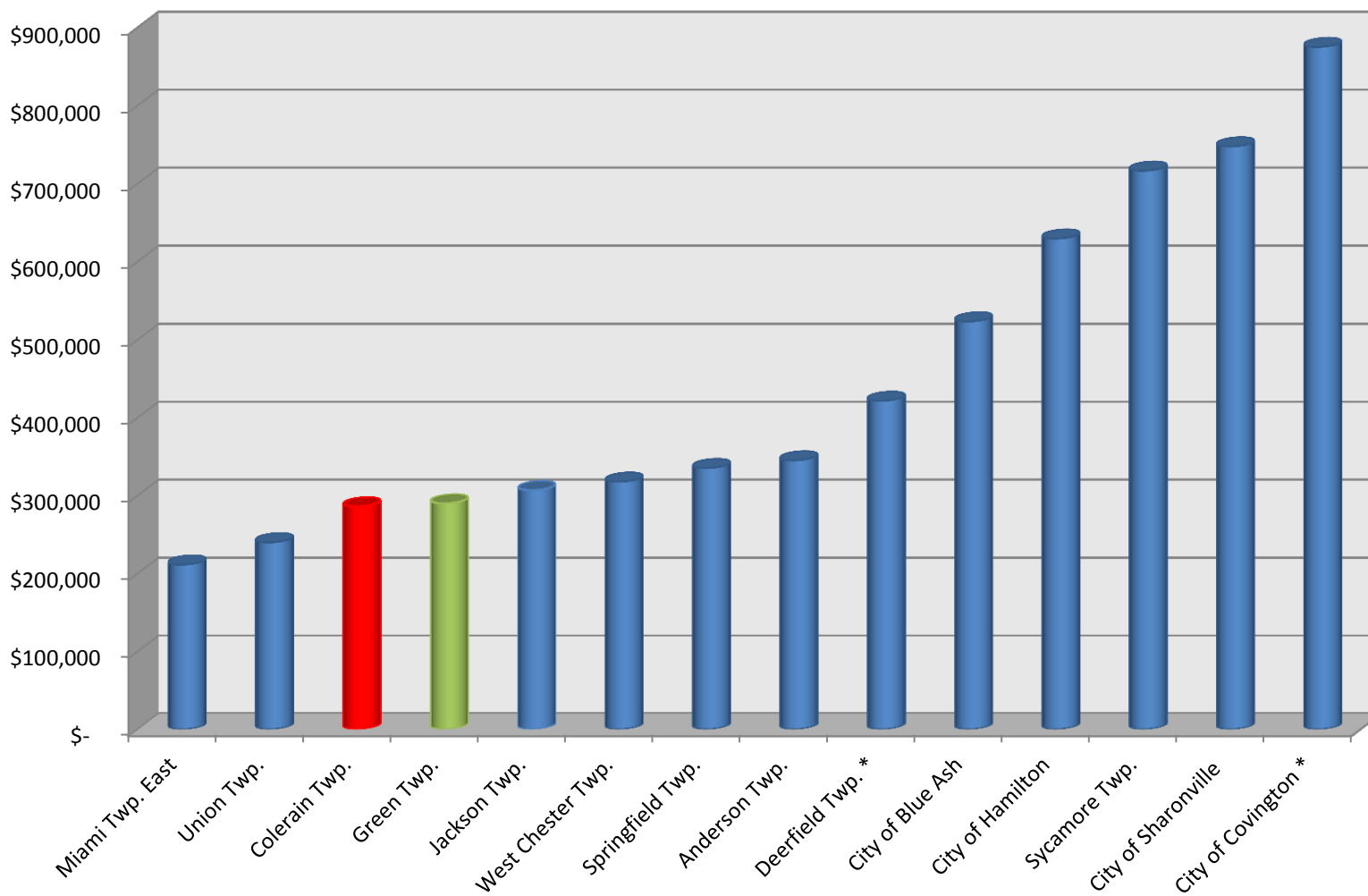


Fire/EMS Cost per Citizen





Fire/EMS Cost per Square Mile



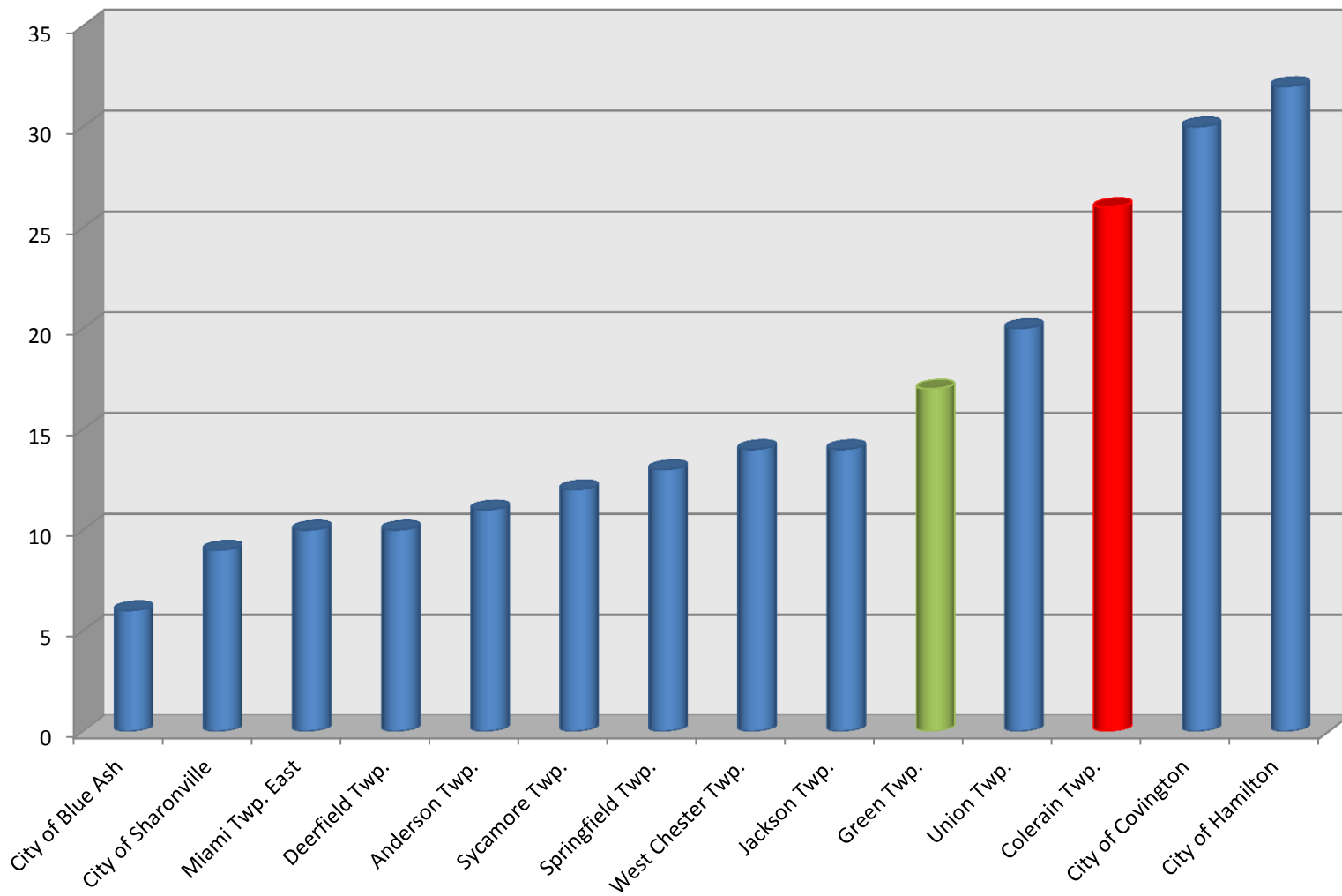


CTFD Highest Number of CALLS Among Townships

- **9,790**
- **54% more than Green Township**
 - **6,370**
- **If Green's expenses for 2011 increased by 54%--\$12,504,452**
- **\$231,000 more than CTFD's**

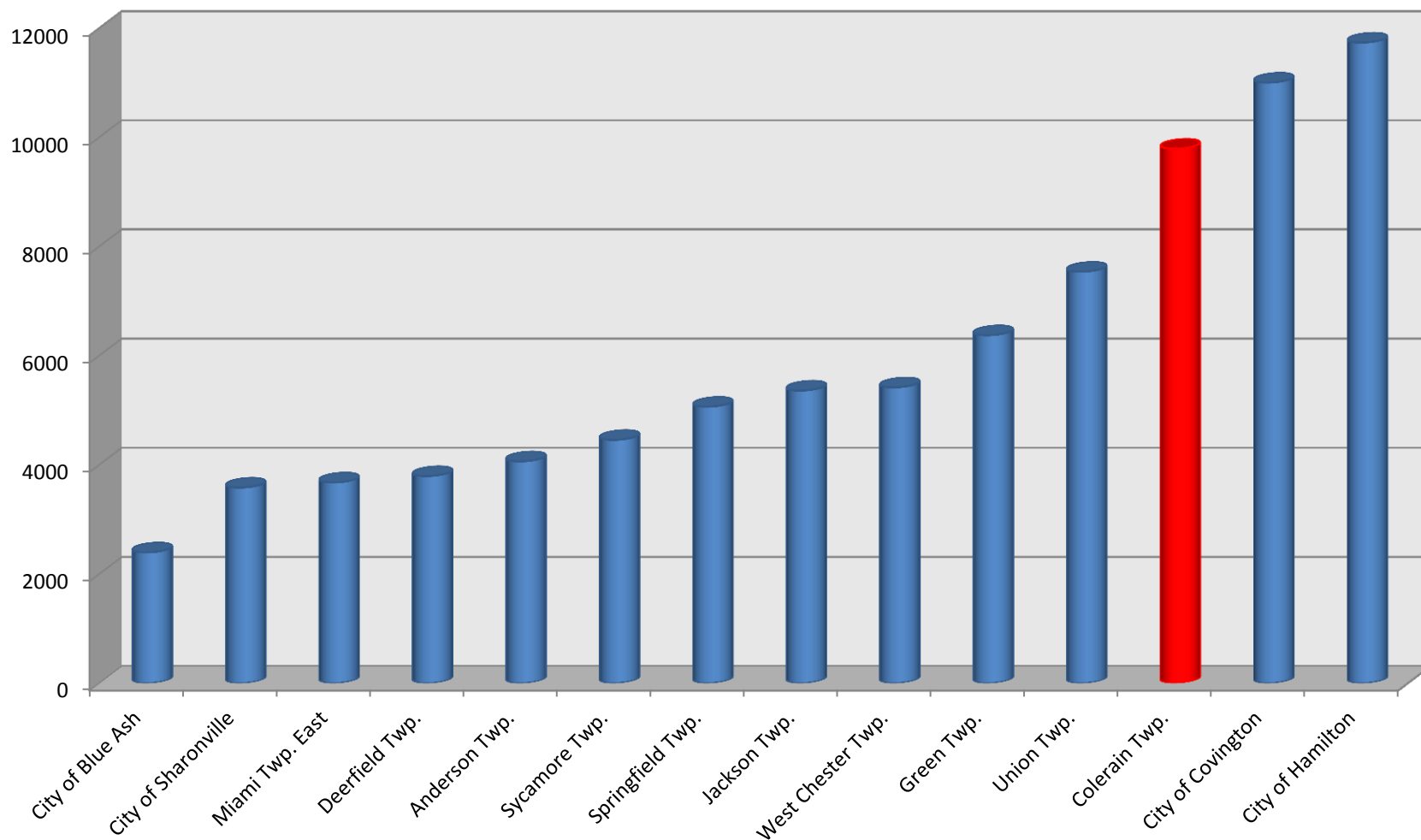


Average Number of Fire/EMS Runs per Day



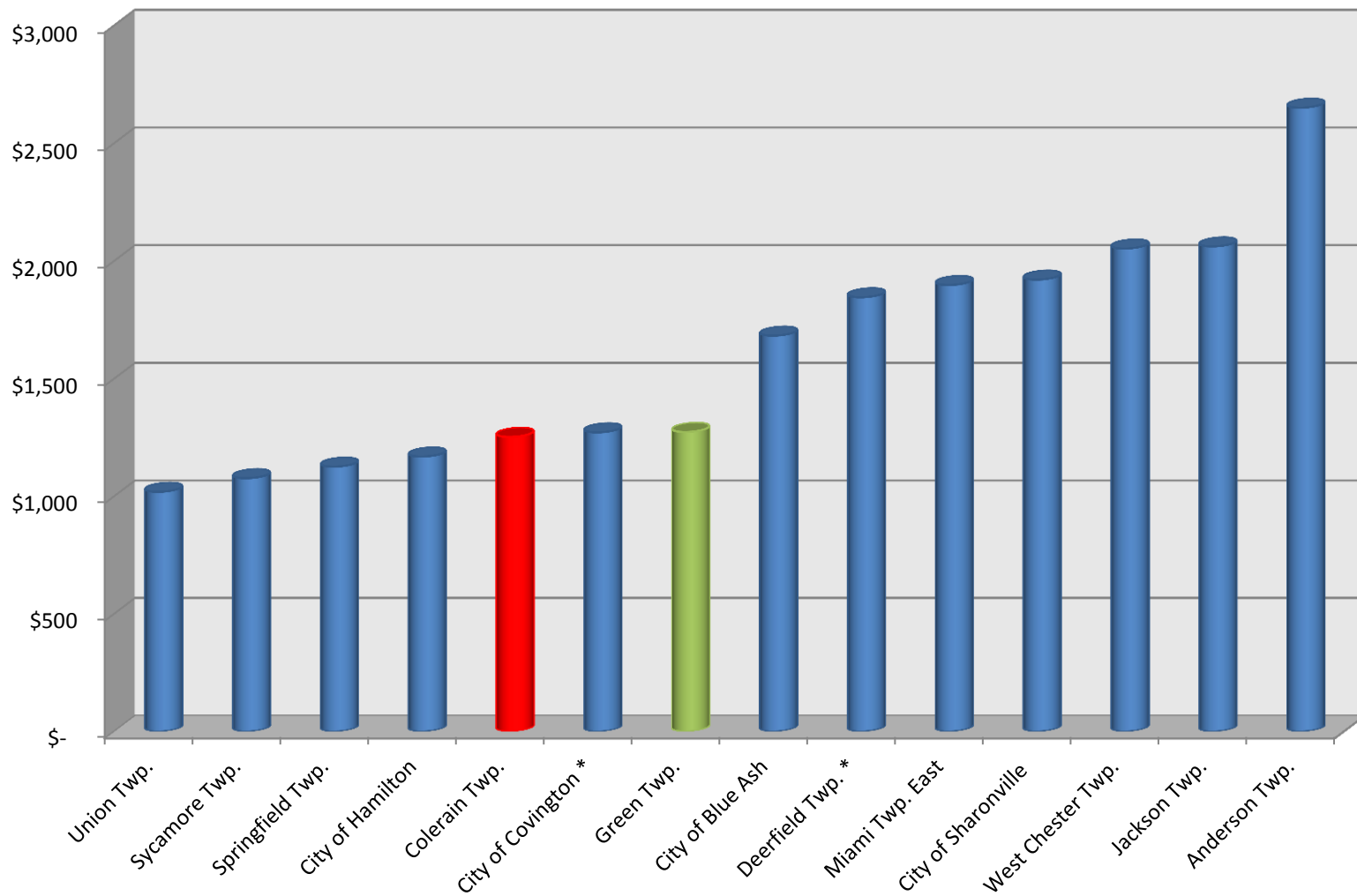


Fire/EMS Responses 2011






Fire/EMS Cost per Incident



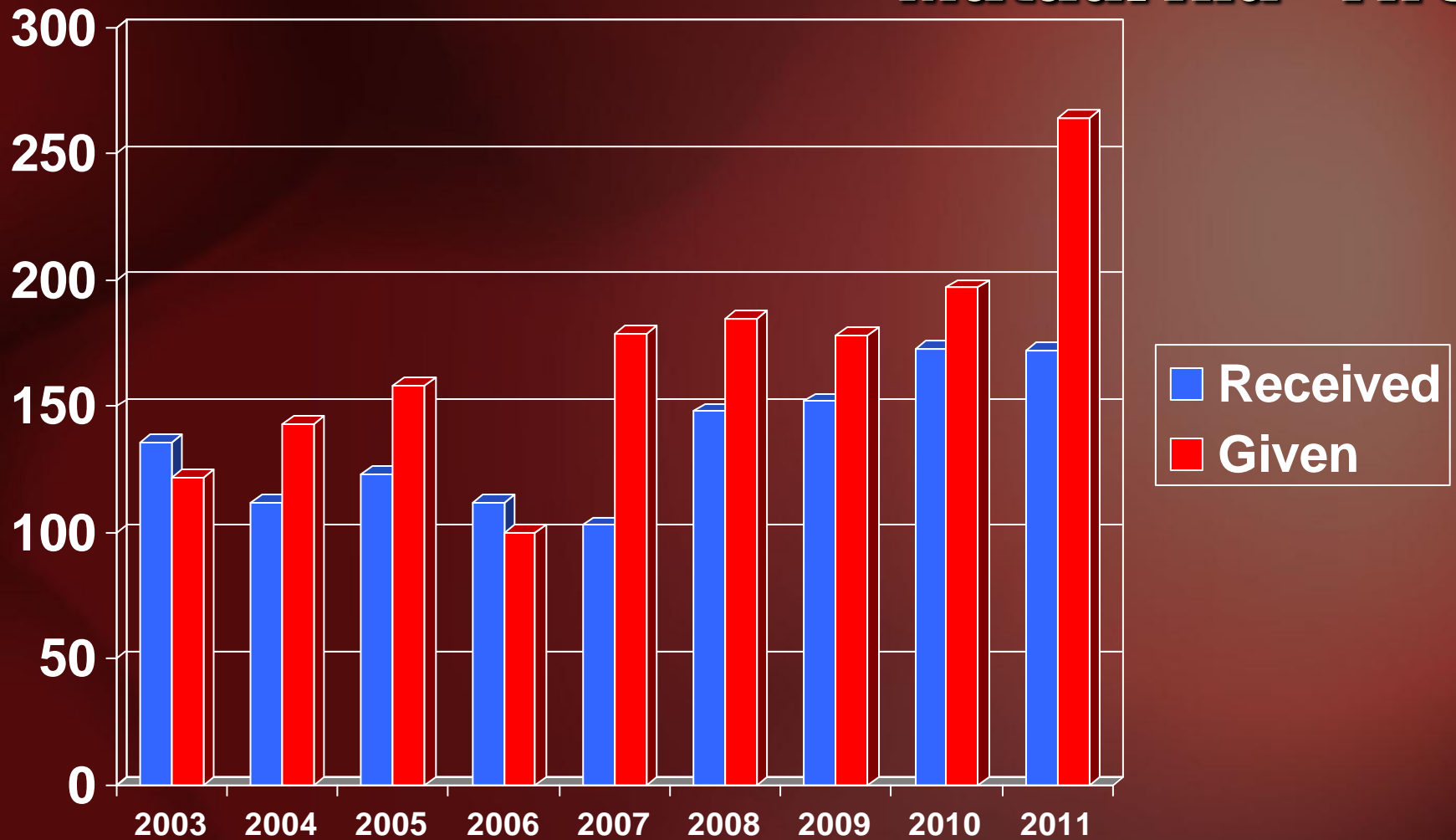


Demand for Fire/EMS Increased 32% Since 2002

- **Aging population**
- **Addition of several assisted-living facilities**
- **More abandoned and vacant structures**
 -  **housing = more foreclosures**
- **EMS substitutes for primary MD**
- **Large population in service area**
- **Increase in mutual aid**

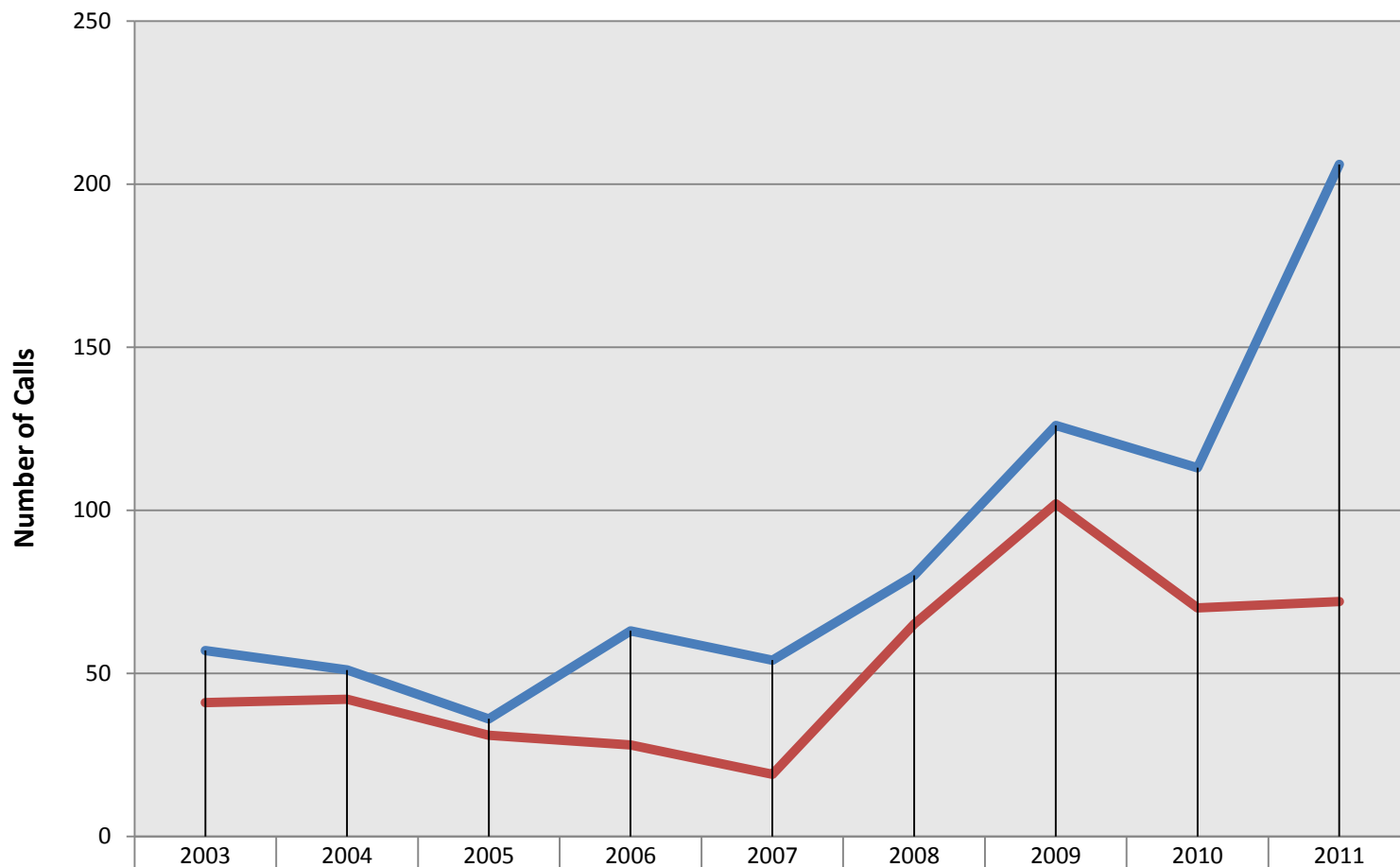


Mutual Aid - Fire





Mutual Aid - EMS



Mutual Aid Received	57	51	36	63	54	80	126	113	206
Mutual Aid Given	41	42	31	28	19	65	102	70	72

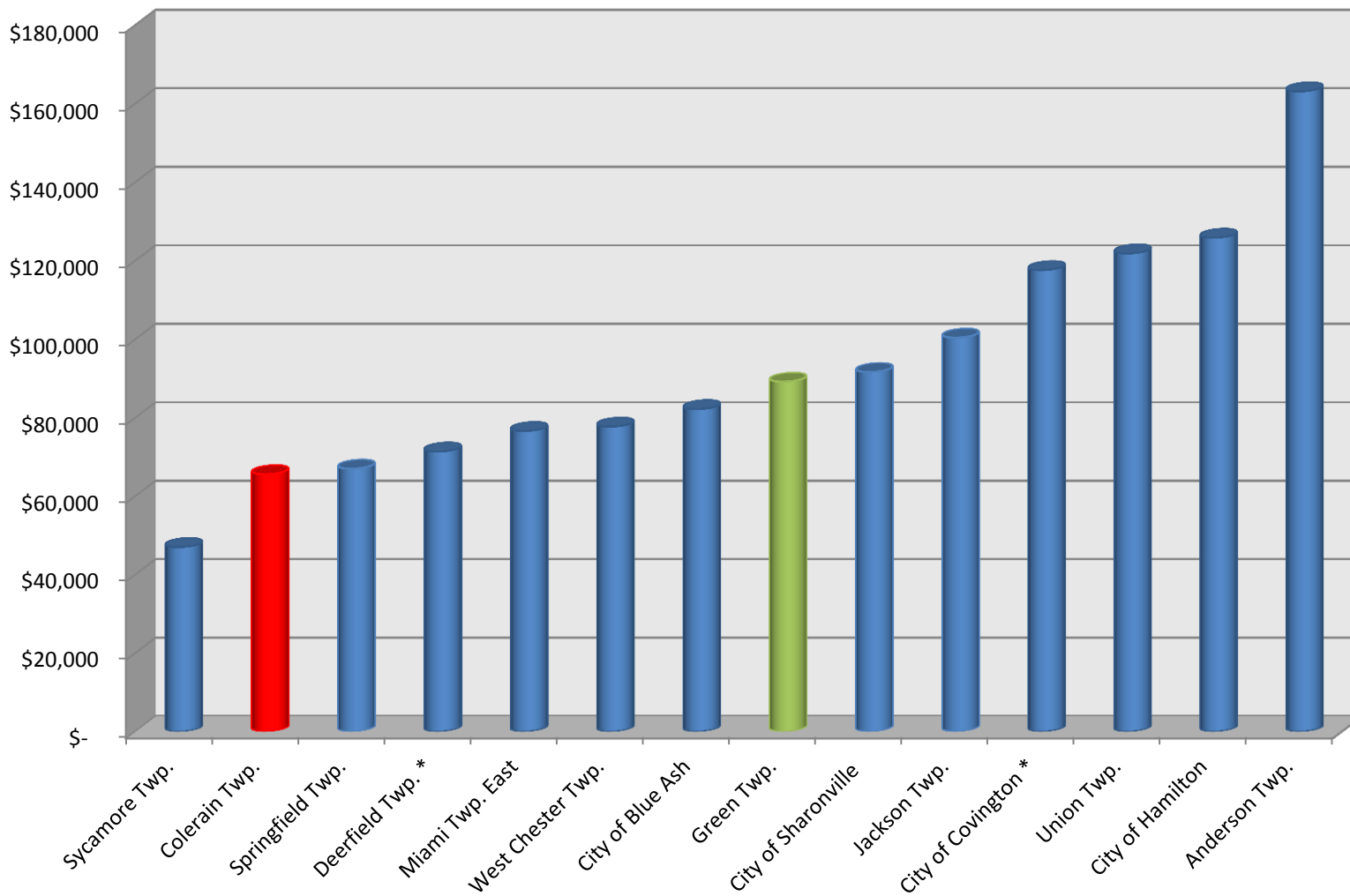


Full-time/Part-time Ratio

- **Lowest in the survey**
- **45%/55%**
- **Combination system most efficient**
 - **Cost savings**
- **Maximum coverage at relatively low cost**

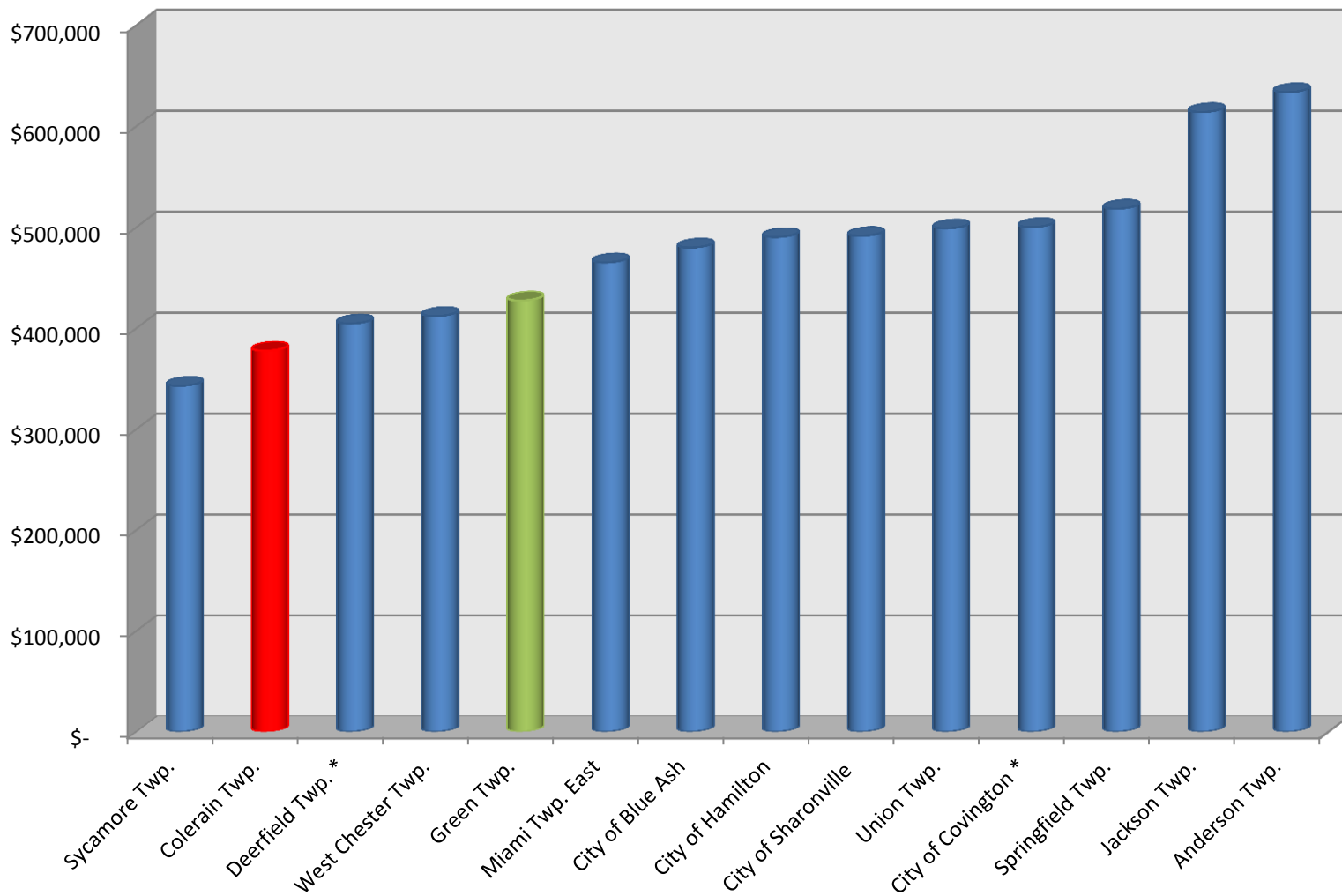


Fire/EMS Cost per Employee





Fire/EMS Cost per 24/365 Position





On- Duty Emergency Personnel

- **CTFD has more on-duty than other townships**

WHY?

- **Effectively handle increased demand for services**
- **We staff more fire & EMS vehicles & stations**
- **We send more personnel on each vehicle**
- **Above = High Quality Service!**



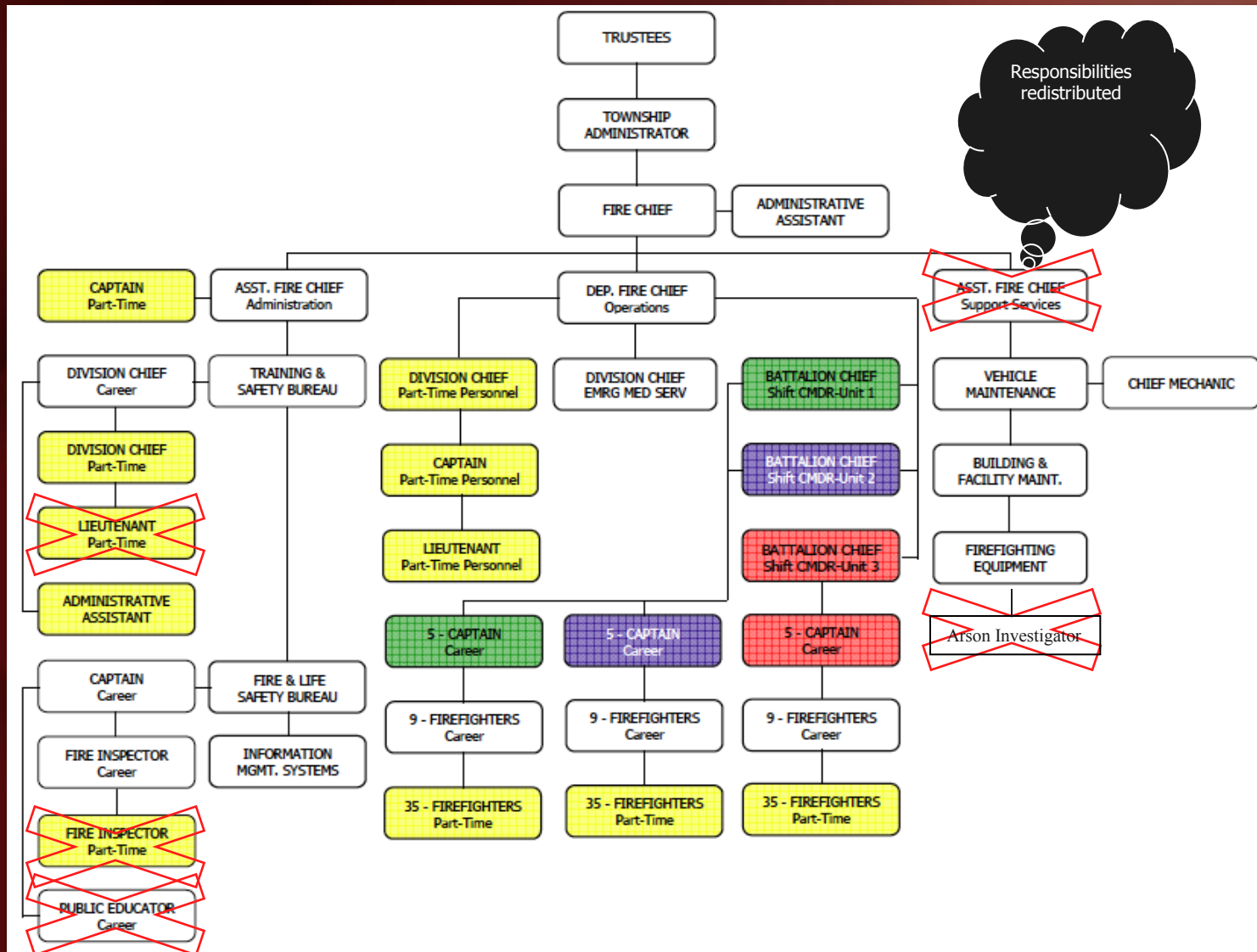
Conservative Fiscal Management

- **Prudent by building carry over amounts in the budget**
- **Maximize life cycles of levies**
- **12 years (1988-2000)**



Much Less Than Projected Revenues

- **Postpone addition of six full-time to increase FT/PT ratio**
- **Estimate from County Auditor for 2010 5.27 mill levy (property tax only):**
 - **\$6,710,811**
- **Current projections: \$6,000,000**
- **Total projected loss from all revenues likely exceed \$1M annually**





Why Reduced Revenues?

- **Continuing poor economy**
- **Downturn in housing market**
- **Devaluation of property values**
- **Foreclosures**
- **Elimination of TPP tax**

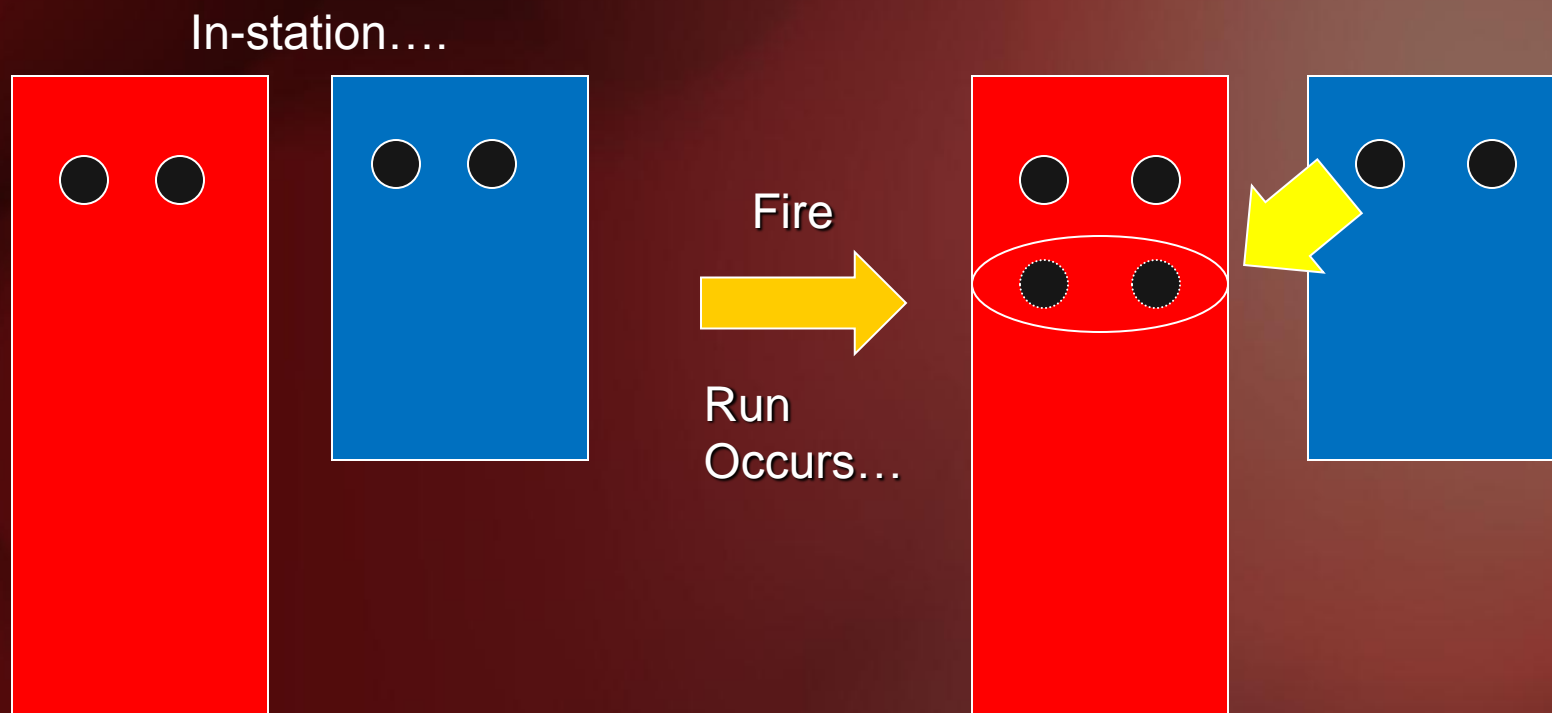


Multiple/Simultaneous Emergency Calls

- **Must rely on mutual aid**
- **43 on-duty riding positions**
 - **On-duty staffing = 33**
 - **Cross staff apparatus**
 - **Appendix A**



Typical Fire Station in Colerain Township



There aren't EMT-FF's for both roles (EMS and Fire)



• Station 25

– 12 Personnel

- EMS Call (Cardiac Arrest)
- 2nd EMS Call
- Structure Fire

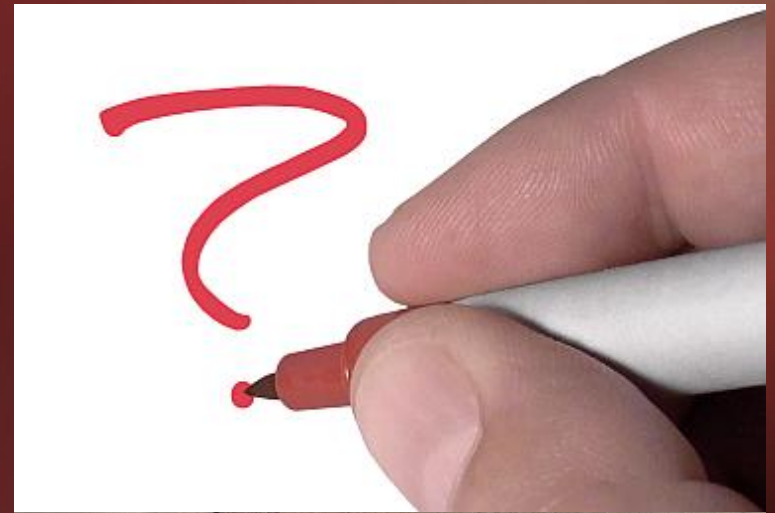




• Station 26

– 9 Personnel

- EMS Call (Cardiac Arrest)
- 2nd EMS Call
- Structure Fire



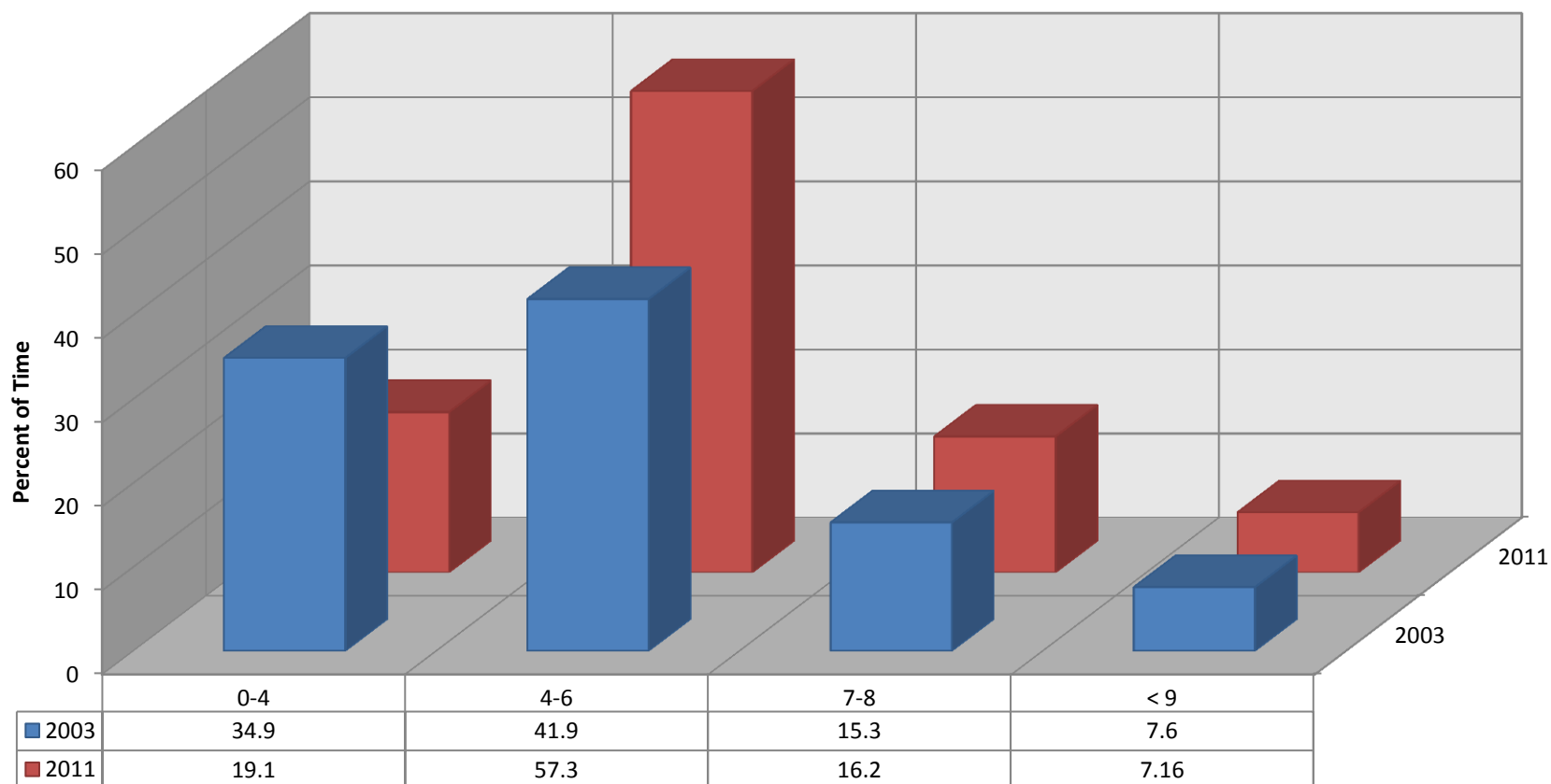


Response Times

	2007	2008	2009	2010	2011
% < 6 Minutes	79.5	77.5	75.2	76.8	74.8
First Unit Arrive	4:50	5:14	5:28	5:25	5:23

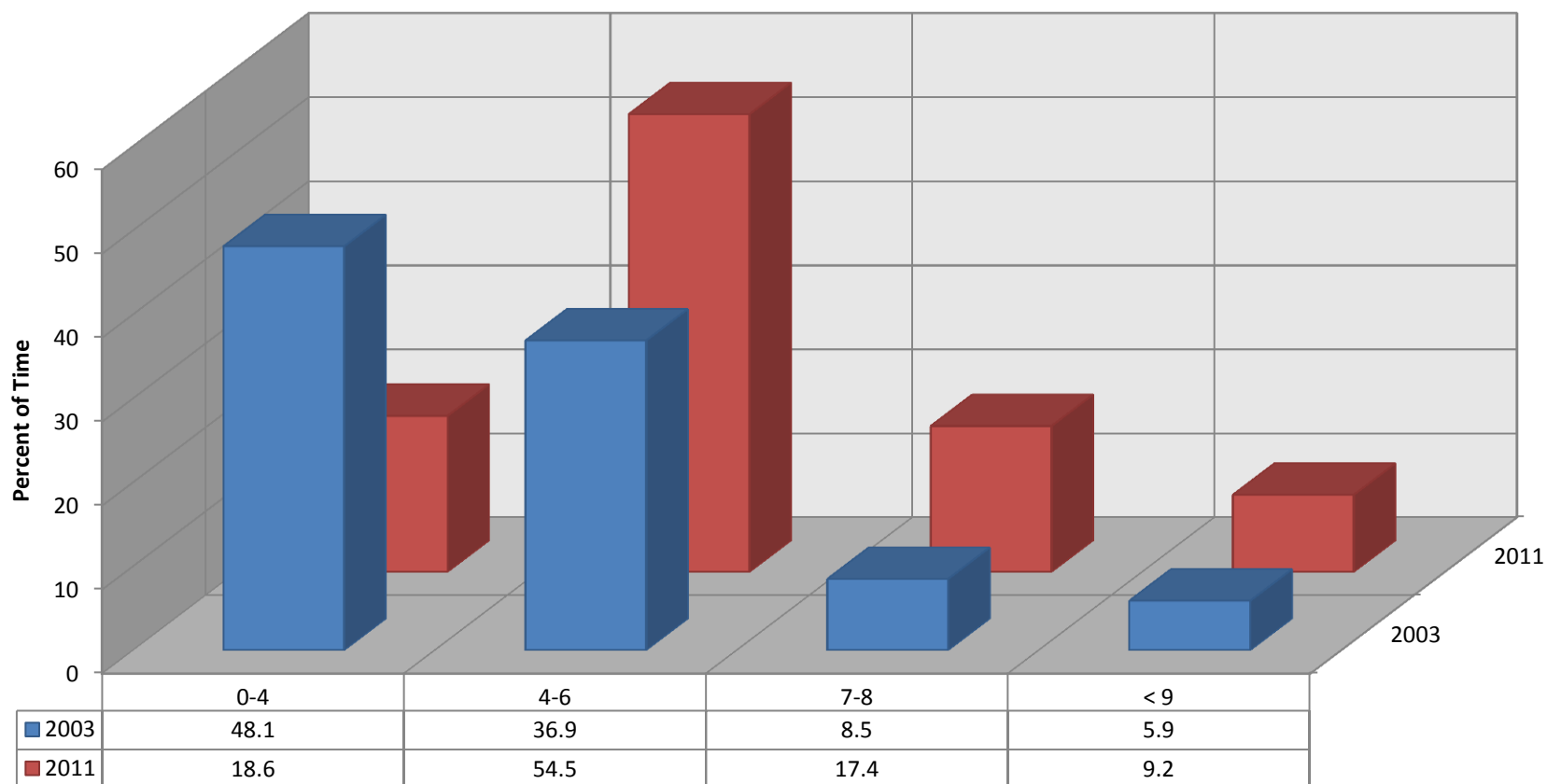


Fire Response Times





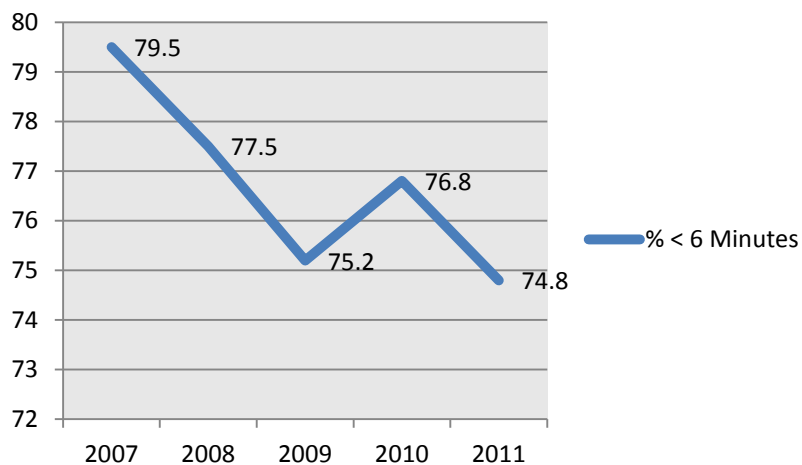
EMS Response Times



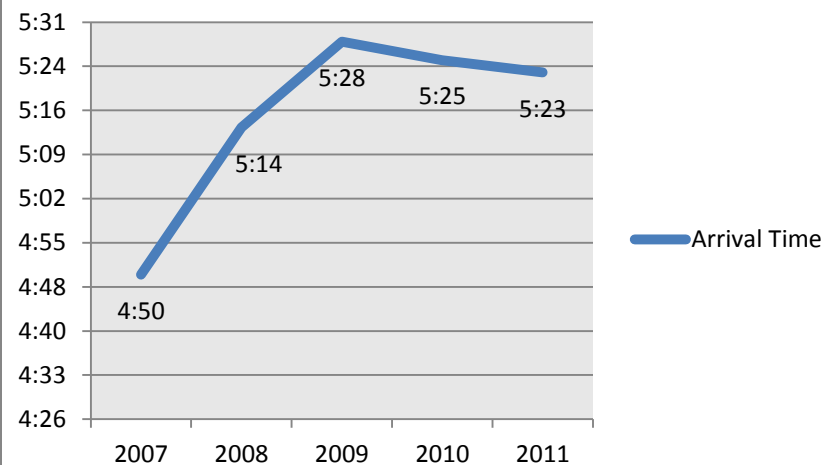


Correlation of Times

% < 6 Minutes

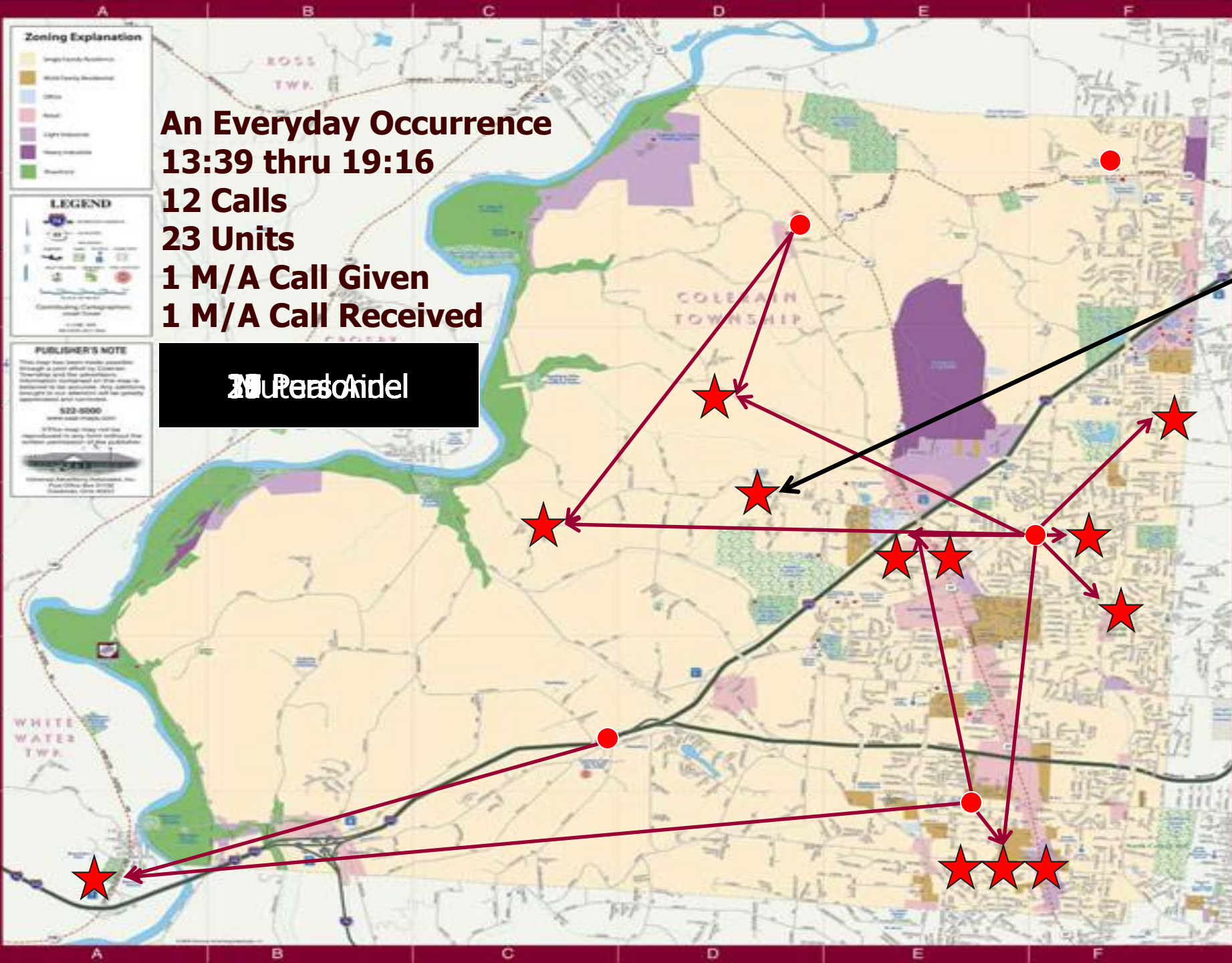


Arrival Time



1 M/A Call Received

Nurpersönlich



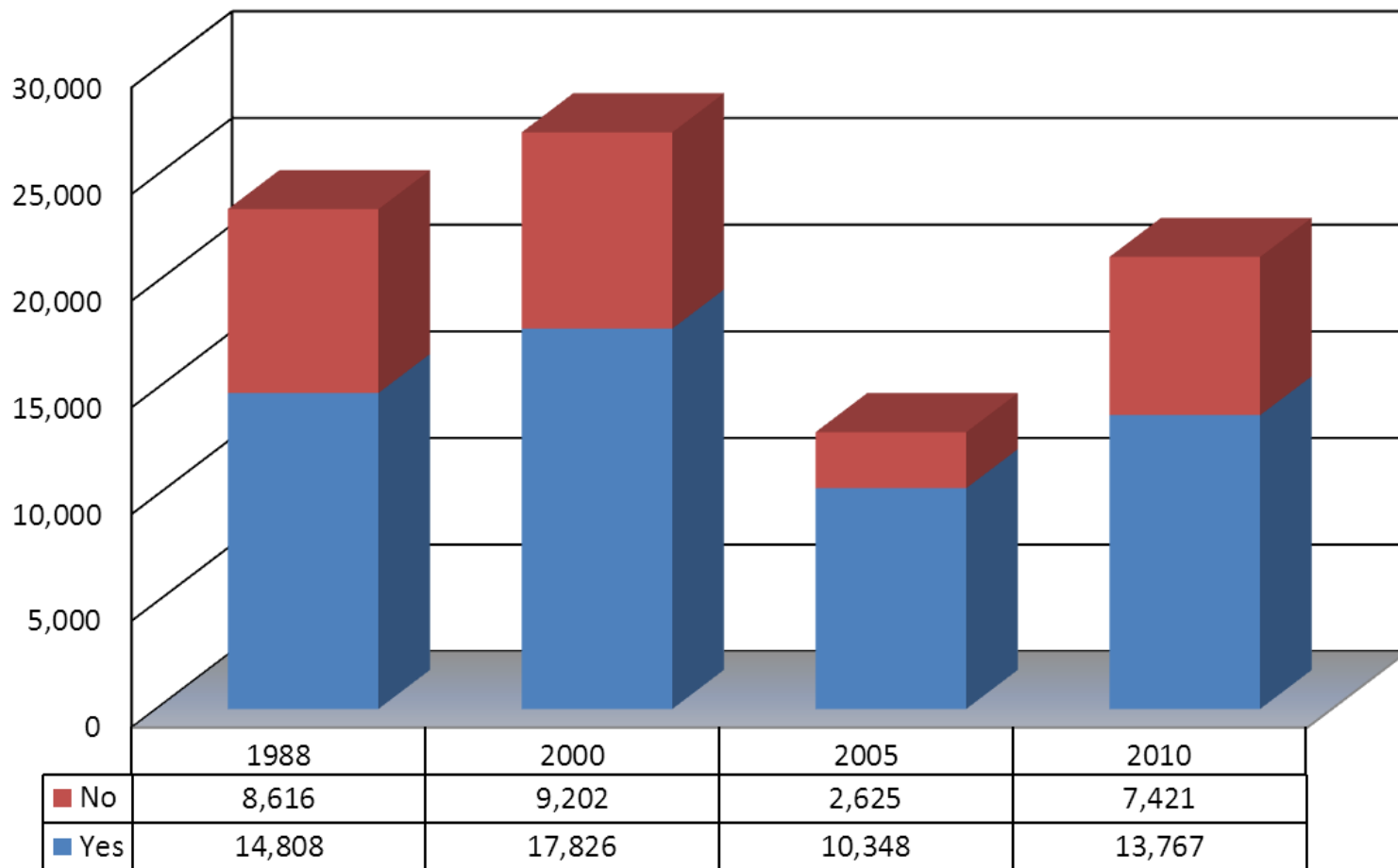


Fire/EMS Levy History

- **Margins of passage is unprecedented**
- **Last levy (Nov. 2010) 65% passage**
 - **Unemployment rate was 9.8%**
- **If combine last four levies: 67% passage**
 - **Appendix B**



Levy History





ISO Rating

- **Best rating among all 14 departments**
 - **Class 2 (85.16 Total Credit)**
- **Lower homeowner's insurance premiums**
- **If further loss of revenues causes cuts in service, ISO rating regression may occur**
- **Insurance premiums begin to rise**



Miscellaneous

- **Green TWP FD \$1,791,816 from Gen Fund for 2012**
- **2007-2011, Sycamore TWP FD \$6.5M from Gen Fund and \$6.6M TIF**
- **Still researching “Best in Class” agency**
 - **Narrow to 40 agencies (ISO Class 1)**
- **Total property loss from fire 2009-11:**
 - **\$1,820,690; CTFD saved: \$19,805,750**



Summary

- **Large geographic area**
- **Cost effective operation**
- **Busy provider of service**
- **Efficiency in operation**
- **Modest resources**
- **Feeling impact of lower revenues**
- **Prudent spender of taxpayer dollars**