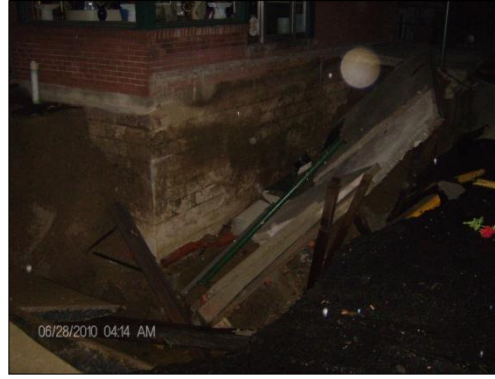
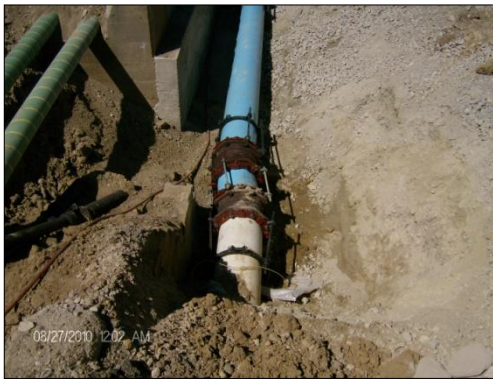


WILMINGTON WATER DEPARTMENT



Before: Water main damaged by flood sinkhole on 6/28/10 at 2 a.m.



After: Water main repaired by Water Distribution Employees at Swindler's on 8/28/10.

In 2010, the Wilmington Water Department treated an average daily flow of 1.500-MG (Million Gallons) and experienced a maximum day of 2.272-MG. The plant delivered to the distribution system a total of 546.6-MG of water in 2010 to 4984 customers.

The following water sources were used during the year.

Source	Beginning	Ending
Caesar Creek Lake	1/1/10	12/31/10
Large Reservoir	NA	NA
Small Reservoir	NA	NA

The Burtonville Reservoirs held approximately 325.5-MG of water as of December 31, 2010. The Water Department had 18 water mains shut down for repairs and 17 boil advisories. There were three new lines installed and approved.

The following Divisions have been busy during 2010. Here is an outline of the activities.

- **Water Plant and Lab Division**

- ◆ All required analyses of the City's drinking water were performed according to Ohio and U.S. EPA rules and regulations.
- ◆ We composed and mailed out the Consumer Confidence Reports (CCR) that are required by EPA. We mailed 4,600 CCRs to homeowners and 540 CCRs were hand-delivered to apartment owners.
- ◆ As of December 31, 2010, a total of 507 bacteriological samples were tested in the Water Plant's laboratory. There were 208 weekly system samples, none of which tested total coliform positive. A total of 17 boil advisories caused by either broken mains or water main maintenance resulted in 70 samples to be tested. A total of three new line approvals caused six samples to be tested.
- ◆ The amount of treatment chemicals used as of December 31, 2010, were:
 - Pebbled Lime (softening) 328.8 tons
 - Alum (coagulant to remove solids) 129.8 tons
 - Carbon (taste and odor control) 13.8 tons
 - Potassium Permanganate (pretreatment) 0 tons
 - Carbon Dioxide (pH adjustment) 78.8 tons
 - Chlorine (disinfectant) 8.3 tons
 - Polyphosphate/orthophosphate (corrosion control) 4.9 tons
- ◆ Water Plant, Reservoir, Booster Station, and Tower maintenance performed:
 1. Replaced tachometer on alum feed system
 2. Replaced bearings on lime silo feed transfer system
 3. Replaced grit auger and bearings on lime slurry feeder
 4. Replaced rotometer on chlorine feeder
 5. Replaced air compressor switch and belts to filter compressor
 6. Installed CL-17 chlorine monitor in lab.
 7. Repaired brake hubs on Exmark mower
 8. Modified generator switch for manual operation during annual DP&L hour operation obligation.
 9. Replaced 1.5-inch sump pump at Burtonville pump station
 10. Replaced telemetry power supply at plant.
 11. Replaced back-up battery power on CCL control panel
 12. Replaced impellor on finished water sample pump.
 13. Replaced roof fan motor on filter bldg.
 14. Replaced air-lock rotor to lime silo
 15. Replaced plumbing to carbon feeder.
 16. Replaced sump pump at lagoon manhole.

- **Distribution Division**



Broken water main on Old SR 73 at PC Connection

The Distribution Crew worked on the following.

Task	Quantity
Fire hydrants flushed	195
Fire hydrant repaired/replaced	6
Fire hydrants painted	0
Water main repairs	18
Service line leak repairs	7
Meter pit repairs	16
Old service lines abandoned	7
Yard restorations	7
Curb box repairs	30
Water line locations flagged	589
Main valves repaired/replaced	7
Valves exercised	0
Water taps made	1
Curb stops replaced	12
Road boxes repaired	6
Service lines replaced	8

1. Installed overflow pipe on both reservoirs
2. Replaced damaged 12-inch water main on Locust St.
3. Replaced 6-inch water main going through culvert on Locust St.
4. Replaced service lines in Denver Park for Park Dept.
5. Applied herbicide around large reservoir to control vegetation.
6. Repaired numerous service boxes damaged by street restorations on Main, Locust, and South St.
7. Rented Tele-boom machine and bought timbers to use to stabilize areas of the sinkhole on Locust.

- **Utility Billing Office/Customer Service**

- ◆ We had five new water services paid for and installed this year.
- ◆ Customer Service installed five meters for new customers.
- ◆ Customer Service replaced approximately 94 old meters with new ones.
- ◆ There were 541 disconnects for nonpayment and 409 reconnects.
- ◆ There were 1,368 orders for transfer of service completed.
- ◆ There were a total of 3,753 customer service orders completed in 2010.

Submitted by: Jerry Rowlands, Manager
Water Department