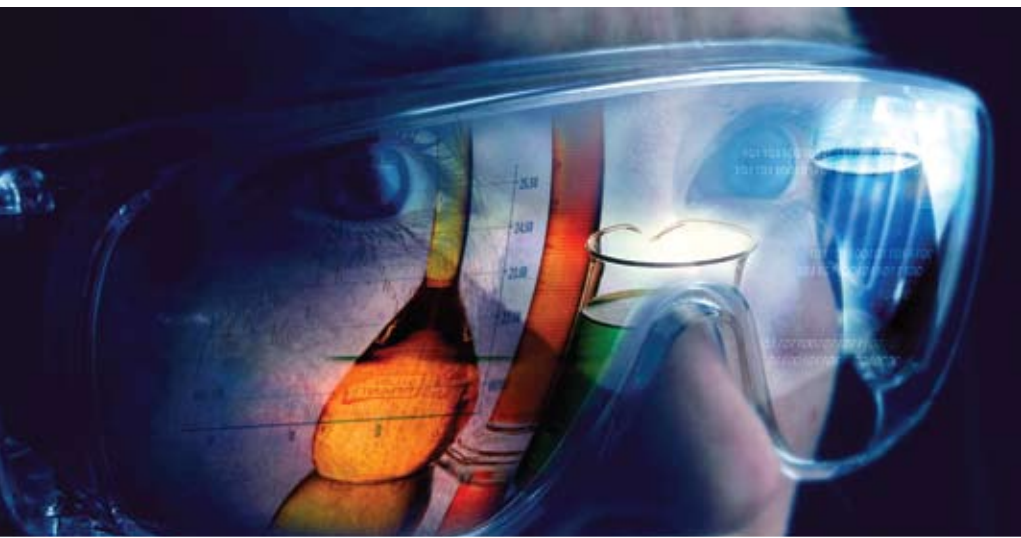


GROWTH.
OPPORTUNITY.
INTEGRATION.



illinois
science +
technology
park

SKOKIE, ILLINOIS



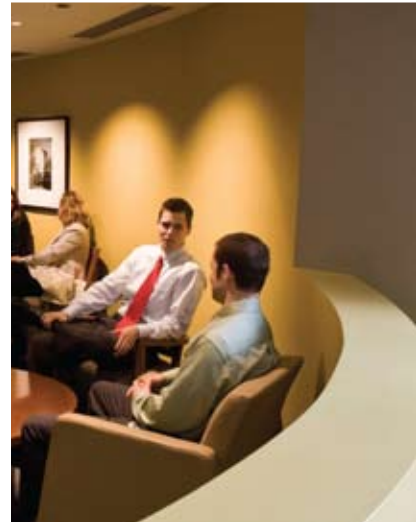
TECHNOLOGY AND COMMUNITY

Every detail has been considered in creating an environment where established companies and emerging entrepreneurs can evolve new technologies.

Beautifully landscaped walkways and outdoor seating areas, conference rooms and a cafe offer opportunities for scientists and technology professionals to interact and collaborate. In the heart of the thriving Village of Skokie, the Illinois Science + Technology Park's progressive campus provides the advanced facilities for science and technology companies — today and tomorrow.

The life sciences campus integrates with an expanded and rejuvenated Downtown Skokie. Both the Village and the State governments provided exceptional support: Skokie contributed \$10 million and the State of Illinois contributed \$5 million for the new bioscience park. The federal government also has a key role by providing \$14 million for a new CTA rapid transit station directly adjacent to the park.

Skokie is a progressive and diverse community committed to growing and enhancing the Downtown environment and in sustaining its long-standing reputation as one of the top business centers in Chicago's North Shore.



LOCATION AND ACCESS

With easy access to the Chicago area's major highways and airports, the bioscience park is just 20 minutes away from downtown Chicago which includes respected teaching hospitals such as Northwestern University, The University of Chicago, Rush University Medical Center and the University of Illinois at Chicago. The North Shore Life Sciences Cluster is also only 20 minutes away and provides prime access to human resources, research and business opportunities. Major multinational life science companies in close proximity include Abbott Labs, Baxter International, Siemens Medical, Hospira and Takeda Pharmaceuticals North America, Inc.

The park is also near world-class shopping districts such as Westfield Old Orchard shopping center, Chicago's famed North Shore retail and restaurant corridor, exceptional hotels and culturally diverse dining, and is only minutes from O'Hare International Airport.



SCIENCE AND BUSINESS

The advanced research campus creates a place where scientists gather to share ideas and businesses work together in synergistic partnerships.

By providing critical real estate infrastructure, the life sciences park makes it possible for science and technology companies to move in—and start working and growing their businesses immediately.

With the potential of up to two million square feet of wet-lab and multi-use office space, the park is an economic engine for the bioscience industry, eventually resulting in as many as 5,000 new jobs in Skokie, and 21,000 additional jobs throughout the State of Illinois. It is expected to generate an estimated \$3.6 billion annually in economic activity throughout the State of Illinois and help retain important research and development firms to attract additional venture capital investment.





For more information on the Illinois Science + Technology Park in Skokie, Illinois, visit:

www.skokie.org

Village of Skokie
Economic Development Division
5127 Oakton Street
Skokie, Illinois 60077
847.933.8447

www.scienceparkillinois.net

Illinois Science + Technology Park
4901 Searle Parkway
Skokie, Illinois 60077
847.568.8400

Council-Manager Government

Mayor	George Van Dusen
Clerk	Marlene Williams
Trustees	Michele L. Bromberg
	Michael M. Lorge
	Donald P. Perille
	Randall E. Roberts
	Pramod C. Shah
	Edie Sue Sutker
Manager	Albert J. Rigoni
Counsel	J. Patrick Hanley





THE BUSINESS OF SCIENCE GROWS HERE.

This state-of-the-art, \$500 million technology park in Skokie, Illinois is owned and is being developed and managed by **Forest City Science + Technology Group**, a national leader in life sciences park development.

Developed on a Downtown Skokie site formerly occupied by a major pharmaceutical company, the 23.4-acre technology campus includes a comprehensive and highly desirable research facility with LEED Gold certification. When fully developed, the Illinois Science + Technology Park will be the largest biotech park in Illinois.

With approximately 210,000 square feet of exceptional laboratory and office space available immediately, along with an additional 1.3 million square feet in build-to-suit opportunities, the Illinois Science + Technology Park is prepared to accommodate the needs of life science and emerging companies today and into the future.





AMENITIES AND BENEFITS

- Strategically located and proximate to leading teaching and research hospitals, major universities and pharmaceutical, medical device and diagnostic companies
- Nearby residential, shopping, dining and cultural entertainment options in Downtown Skokie, Westfield Old Orchard shopping center and Chicago's vibrant North Shore area
- Community is renowned for its commitment to business and economic development
- Easy access to expressways, major thoroughfares and O'Hare International Airport
- Chicago Transit Authority (CTA) rapid transit station under construction (opens 2011) directly adjacent to the park; current shuttle bus to Dempster Street CTA station for convenient access to Chicago and nearby Evanston
- Highly educated local workforce
- Walking distance to Oakton Community College (4,000 current enrollment) and award-winning Skokie Public Library (2,000 visitors daily)
- Beautifully landscaped campus with seating areas, parks and walkways
- Fully wired: fiber optics backbone
- Dedicated conference center and 100-seat auditorium
- Specialized facilities: R&D laboratories, clean rooms, GMP suites, high bay GMP warehouse, NMR suites, laboratories for chemistry, biology, toxicology and nanotechnology
- Abundant amount of garage and surface lot parking
- 24/7 campus, building and parking security

TENANTS

The Illinois Science + Technology Park nurtures technological innovation with a focus on companies in the areas of pharmaceuticals, biotechnology, nanotechnology and medical diagnostics and devices.

Twenty-one tenants currently occupy 460,000 square feet at the park, and employ more than 1,200 professionals.

Current Tenant List (October 2010):

Akom, Inc.	Nanolnk, Inc.
APP Pharmaceuticals, LLC	NanoIntegris, Inc.
Astellas Pharma U.S., Inc.	Nanosonix, Inc.
Astellas Research Institute of America	Nanotope, Inc.
Curalinc Healthcare	NorthShore University HealthSystem
Fisher Scientific	Polyera Corporation
Forest City Science + Technology Group	SBC Health Midwest, Inc.
Global PharmaDevice Solutions	Vetter Development Services, USA, Inc.
Lucid Labs, LLC	Vetter Pharma International USA, Inc.
Midwest BioResearch, LLC	World Courier
NanoBusiness Alliance	

