

# Major Entry - Gateway Design Concepts



Gateway identifier without shelter



Potential use of gabion walls with recycled train bed ballast as benches at entries

**Industrial/Rail Road Theme**

# Major Entry - Gateway Design Concepts



Gateway identifier at entries with masonry seat walls



Possible addition of shelters for people awaiting the bus

# The Fulcrum - Main Street Existing



# The Fulcrum - Main Street Potential Treatment



# Prairie and Savanna



Create native prairie plantings and small berms  
Add occasional trees as in Oak Savanna

## Second Room Searle Parkway to Main Street



- Create entryway of columnar trees, then make more open

## Third Room - Proposed Treatment



# Bridge over bioswales



Gabions used as walls or pillars along trail





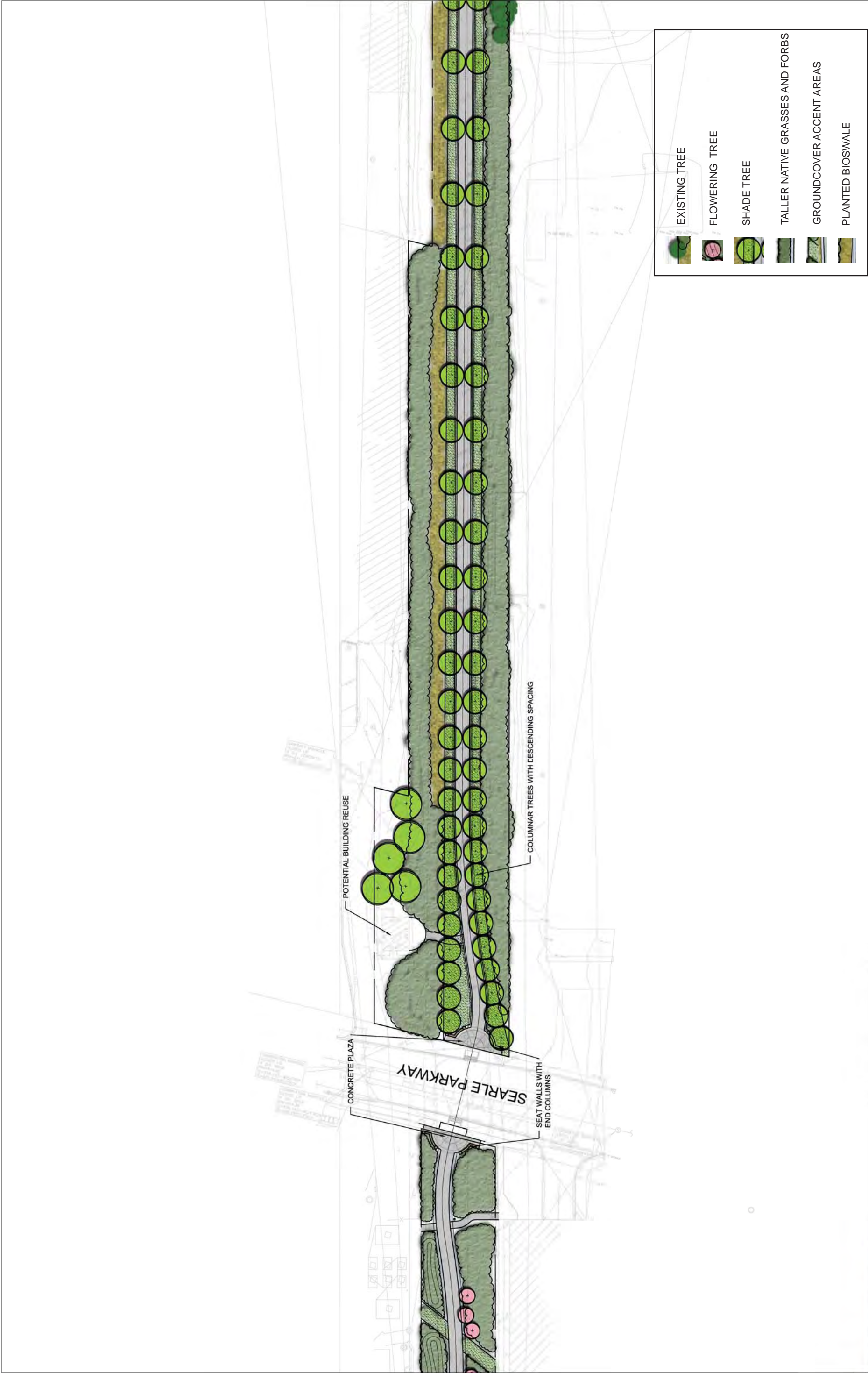


- EXISTING TREE
- FLOWERING TREE
- SHADE TREE
- TALLER NATIVE GRASSES AND FORBS
- GROUNDCOVER ACCENT AREAS
- PLANTED BIOSWALE





<b>TYLIN</b> INTERNATIONAL Allomany Inc	DESIGNED	---	REVISION	---
	DRAWN	---	REVISION	---
	CHECKED	---	REVISION	---
	DATE	7/29/10	REVISION	---
<b>VILLAGE OF SKOKIE</b>		SKOKIE VALLEY TRAIL CONCEPT DESIGN		
SCALE: 1"=30'		SHEET NO. 3 OF 6 SHEETS		
		STA. J95+54. TO STA. J25+50.		
		COUNTY	COOK	TOTAL SHEET NO.
				CONTRACT NO. 60K14



<b>TYLIN</b> INTERNATIONAL Allomany inc	DESIGNED - ---	REVISED - ---	<b>VILLAGE OF SKOKIE</b> SKOKIE VALLEY TRAIL CONCEPT DESIGN	COUNTY	TOTAL SHEET
	DRAWN - ---	REVISED - ---		COOK	SHEETS
	CHECKED - ---	REVISED - ---	SCALE: 1"=30'	SHEET NO. 2 OF 6 SHEETS	CONTRACT NO. 60K14
	DATE - 7/29/10	REVISED - ---	STA. J08+64 TO STA. J19+54...		



	EXISTING TREE
	FLOWERING TREE
	SHADE TREE
	TALLER NATIVE GRASSES AND FORBS
	GROUNDCOVER ACCENT AREAS
	PLANTED BIOSWALE