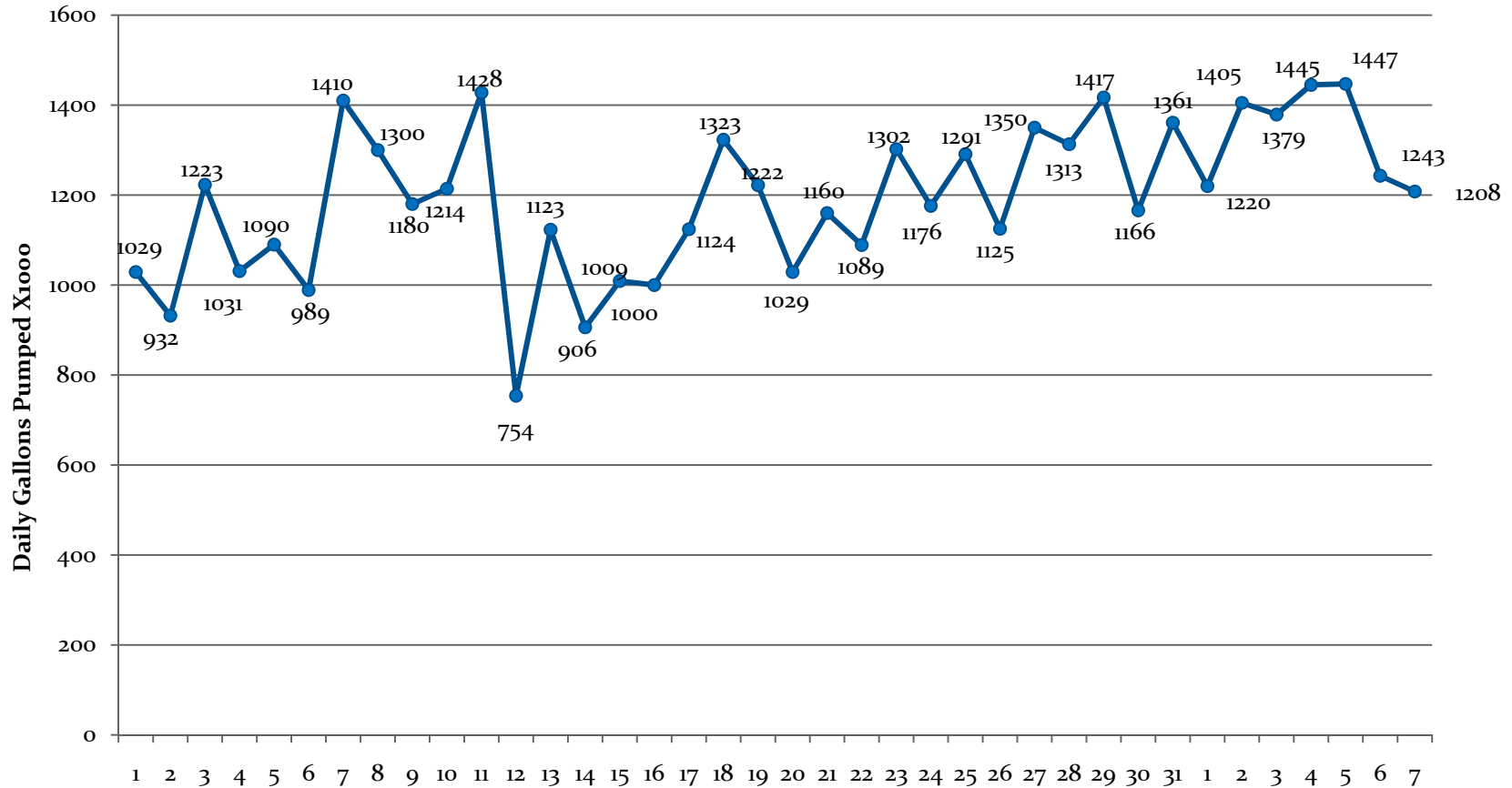


WATER PUMPAGE INFORMATION

City Council: June 8, 2011

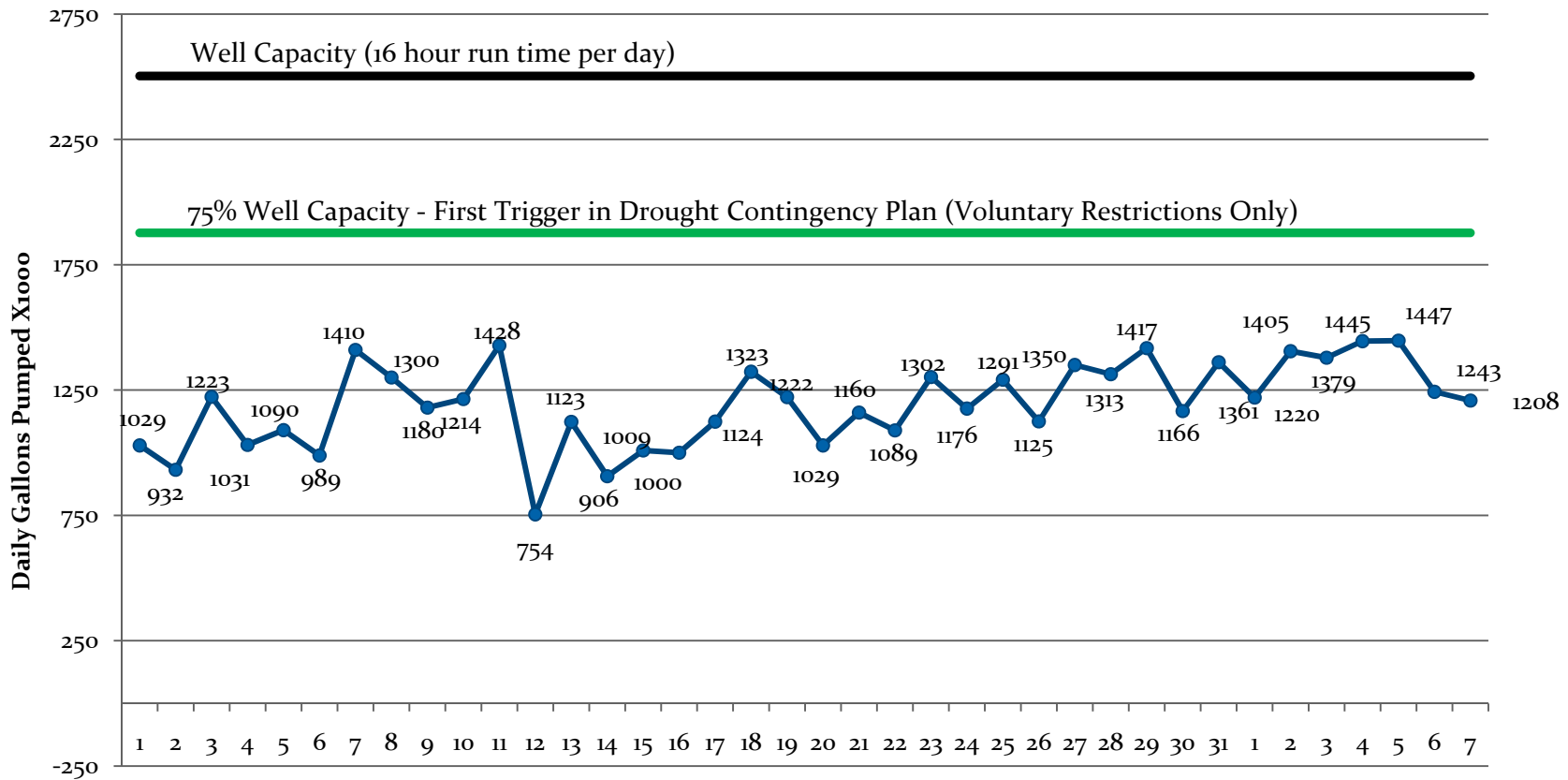


Daily Water Production - MAY 2011



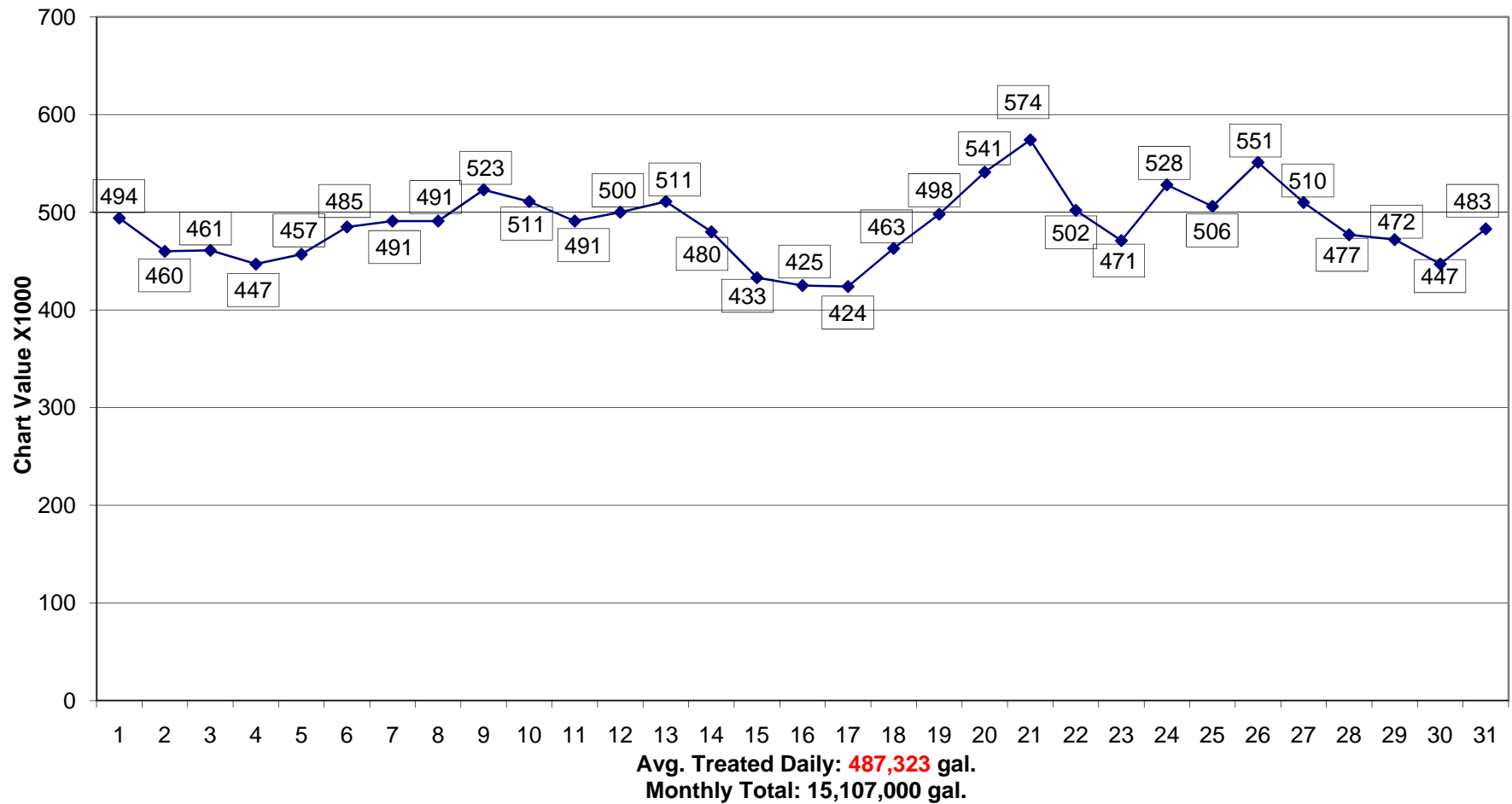
Daily Average Usage: 1,163,419 Gallons
 Monthly Usage: 36,066,000 Gallons

Daily Water Production - MAY 2011

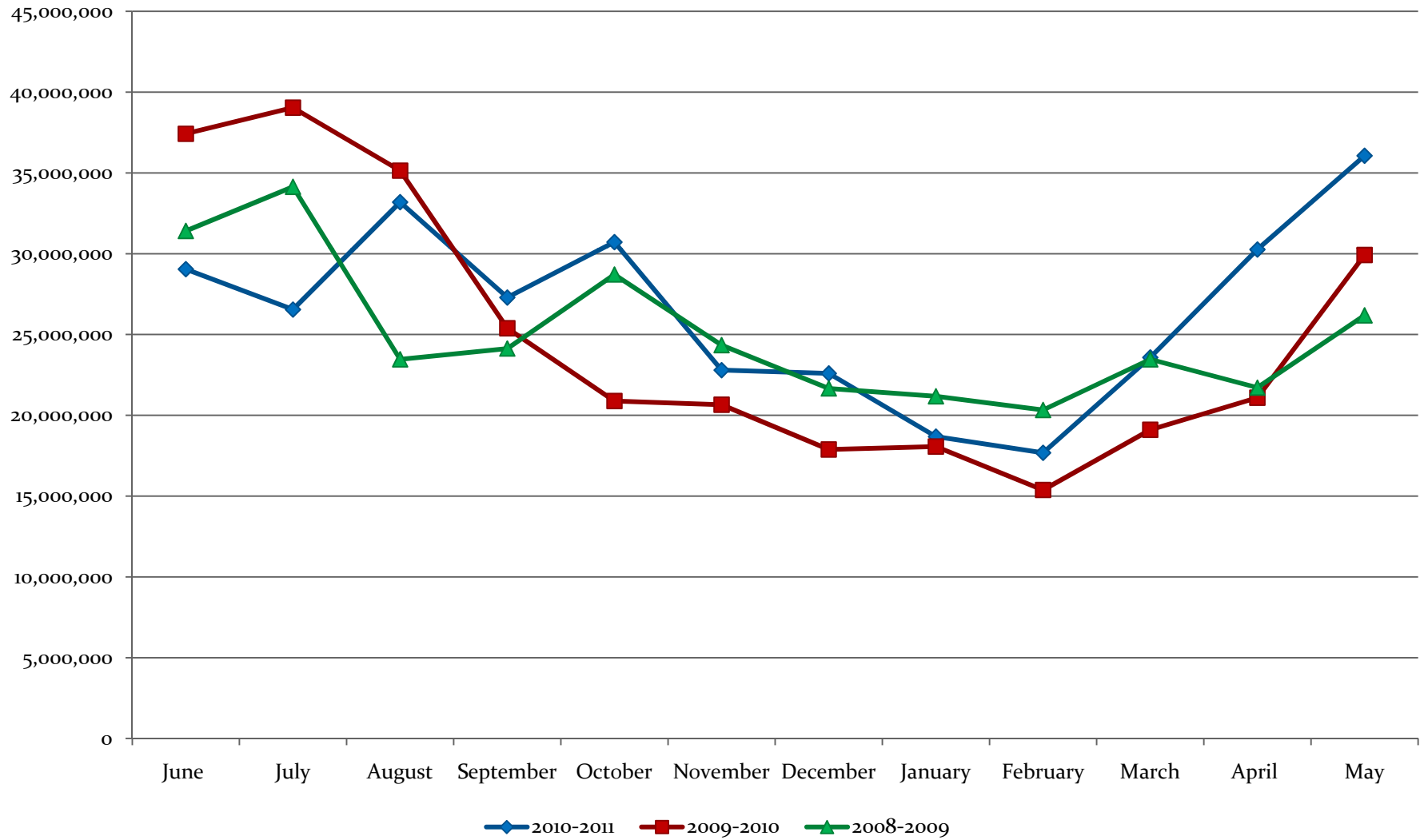


Daily Average Usage: 1,163,419 Gallons
Monthly Usage: 36,066,000 Gallons

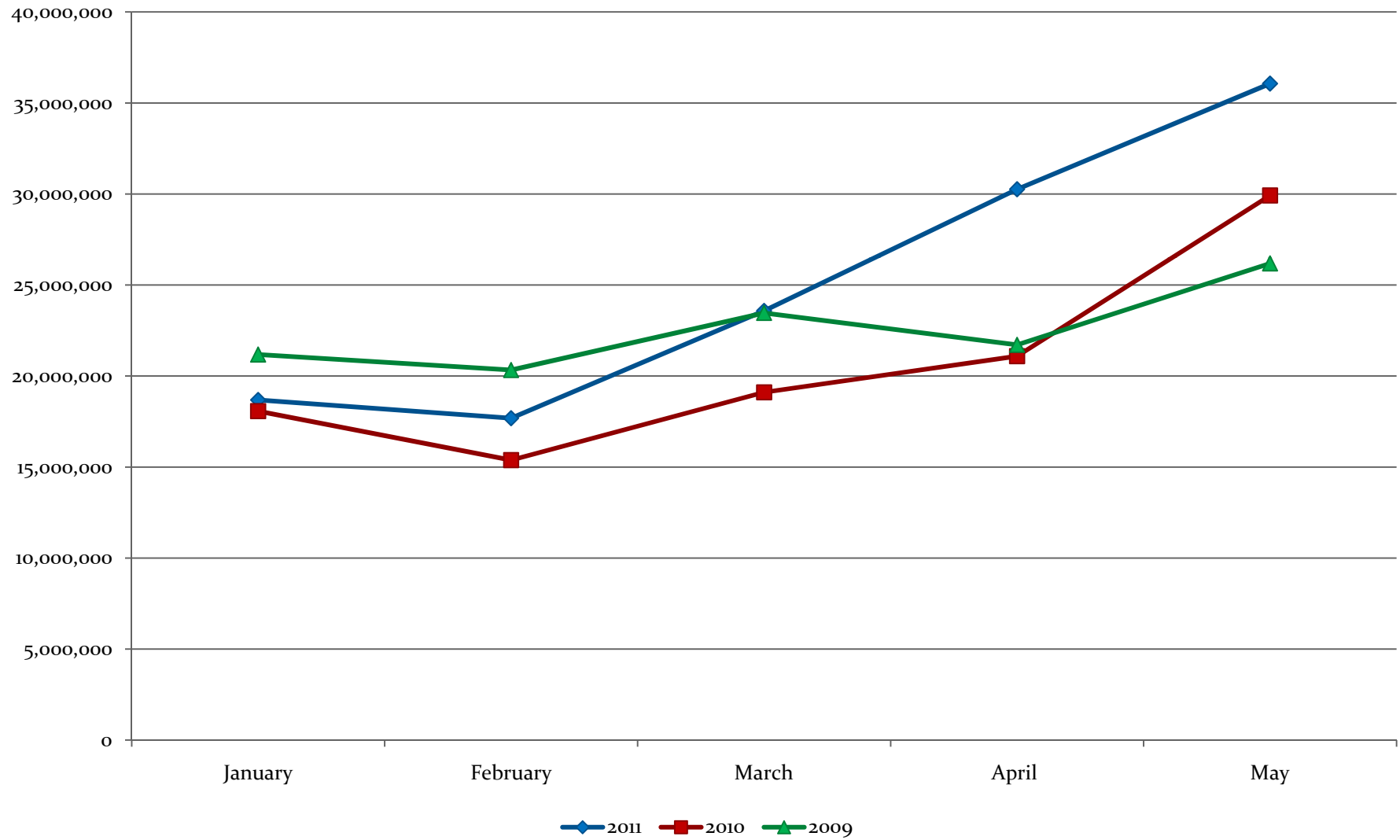
Daily Effluent Line **MAY 2011**



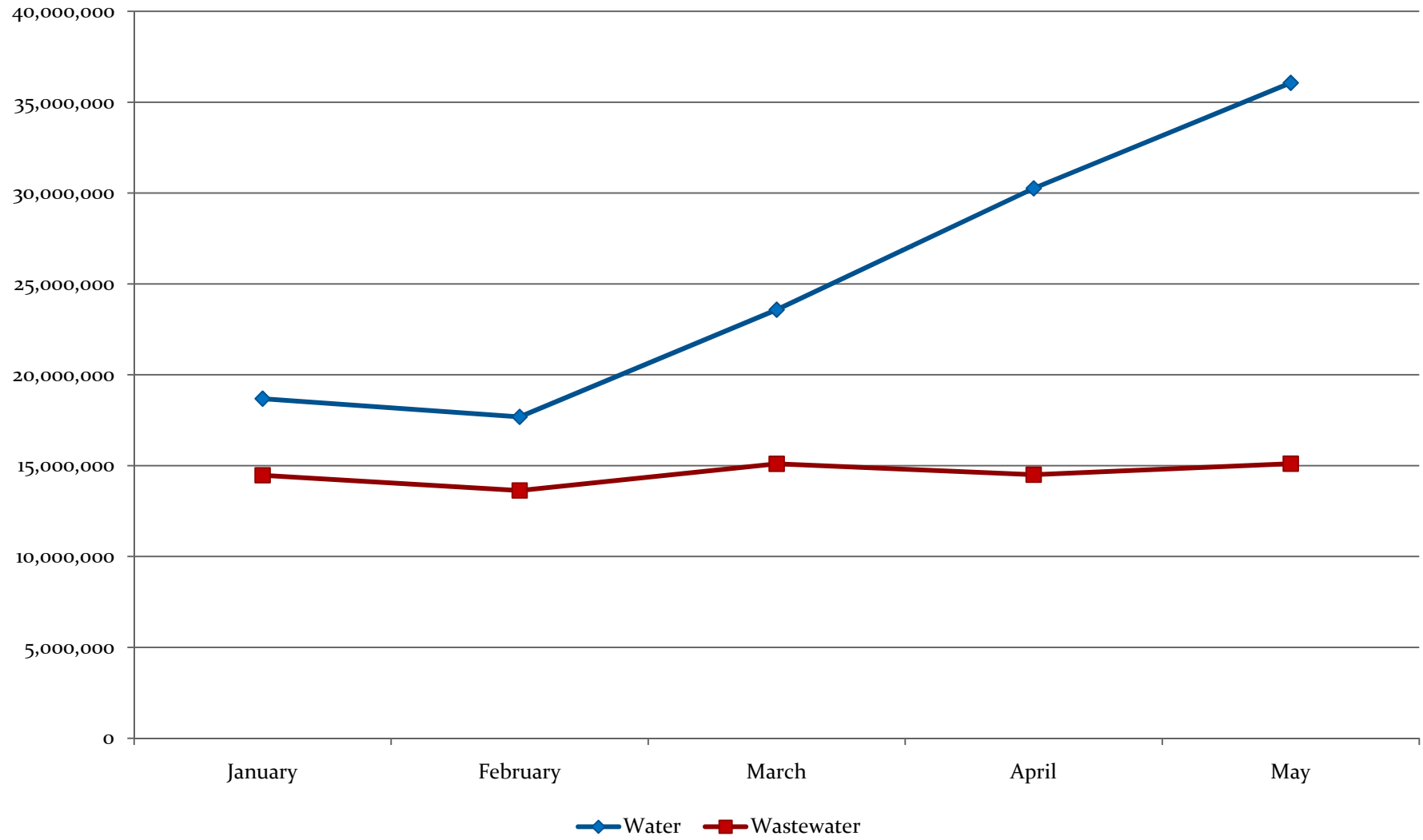
Rolling 3 Year Pumpage



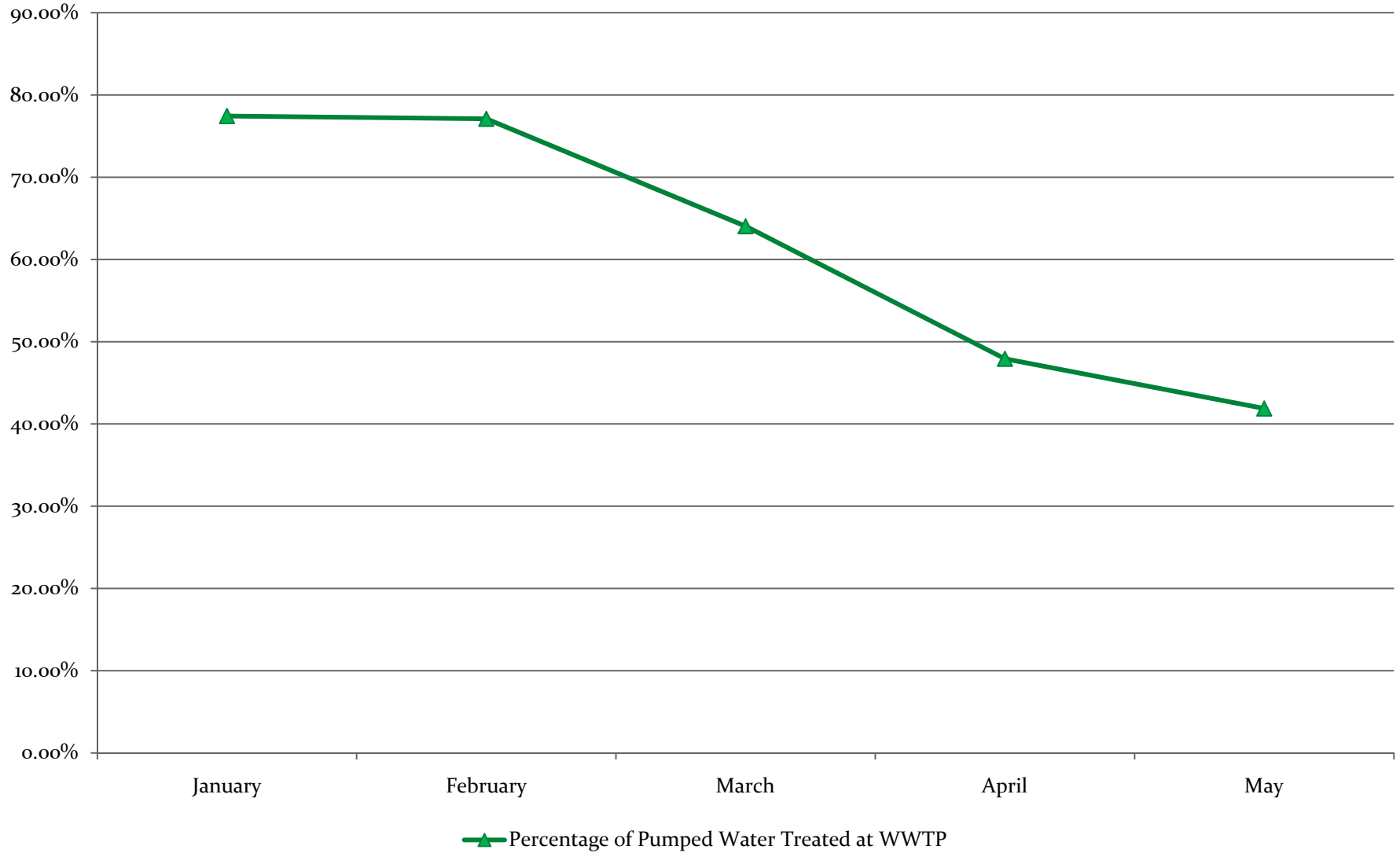
Calendar Year Pumpage (January - May)



2011 Pumpage and Effluent Treated

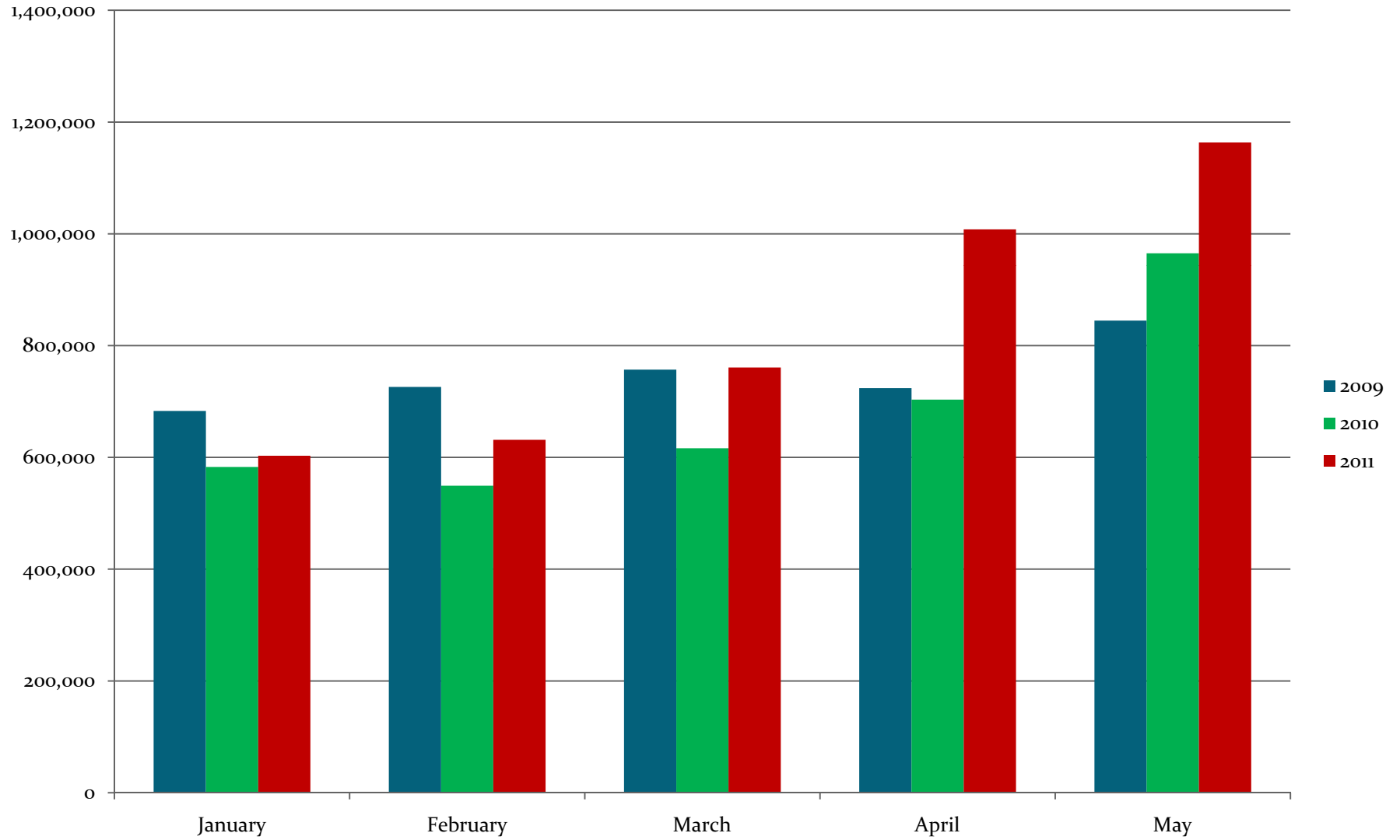


Percentage of Water Recovered at WWTP





Daily Average Pumpage



Water Facts

- March – May '11 Pumpage: 89.9 million gallons
- March – May ('07-'09 Avg): 70.2 million gallons
- 2011: 28% increase over previous 3 year average

Water Facts

- June 2011 Average Daily Pumpage: 1.335 mil gal
- If this average continues through June:
 - Highest use month since at least 2006
 - 6% higher use than previous high (July 2009)