

## HOW MUCH WATER IS USED?

### **Inside/Outside the home.....**

Running the faucet	2-5 gal per min
Taking a shower	2-7 gal per min
Taking a bath	20-60 gal per bath
Washing a full load of clothes	25-50 gal per load
Flushing the toilet	1.5-7 gal per flush
Running an automatic dishwasher	10-20 gal per load
Running the garden hose	5-24 gal per min

## WATER RATE SCHEDULE

<u>Monthly Usage</u>	<u>Rate per 1000 gal*</u>
0 to 2,000 gal	45.86
2001 to 5,000 gal	6.19
5,001 to 10,000 gal	8.16
10,001 to 20,000 gal	9.34
20,001+ gal	11.67

\*these figures do not include sales tax of 9.48%, and a water tax of \$0.0065 per thousand gallons

## HOW TO CALCULATE

Average Payson Usage = 7500 gallons

First 2000 gallons	\$45.86
Next 3000 (\$5.84 X 3)	\$18.57
Next 2500 (\$7.70 X 2.5)	\$20.40
Taxes (Sales & Water)	\$ 8.09
Total	\$92.92

### **6) WHAT SHOULD I DO IF I FIND THAT I HAVE A LEAK?**

In accordance with the Town of Payson Resolution #235, homes constructed after July 29, 1980 should have a shut off valve on the customer side of the town's water meter. Location of these customer shut off valves may vary, however, proper installation would place them within a foot or two of the town's water meter. These valves are for the explicit use of the customer in shutting off the flow of water to their homes in the event a leak should occur. As a part of home disaster preparedness, it is a good practice to determine where your customer shut off valve is located whether you are a new customer or if you have lived in your home for several years.

If the customer shut off valve cannot be located, the water department should be contacted to turn off the town's water meter. If these situations should occur after hours (Monday-Friday, 8 am to 5 pm), a fee may be assessed to your account. For your protection and convenience in the future, you may want to consider having a customer shut off valve installed.



**Town of Payson Water Department**  
**303 N Beeline Highway #A**  
**Payson, AZ 85541**

Contact:  
Customer Service  
Phone: 1-928-474-5242x4  
Fax: 1-928-472-2556  
E-mail: [water@paysonaz.gov](mailto:water@paysonaz.gov)



**HAVE YOU  
READ YOUR  
WATER METER  
LATELY?**



**Try these easy tips  
to find out how  
much water you are  
using**



## TO READ YOUR METER, FOLLOW THESE SIMPLE STEPS:

**1) LOCATE YOUR METER:** Most Town of Payson water meters are located at the front of the property; however, some are located in the utility easement at the rear of the property. The meters are in a cement box with a metal lid with a round black touch pad. If you have any problems locating your meter, please contact our office.

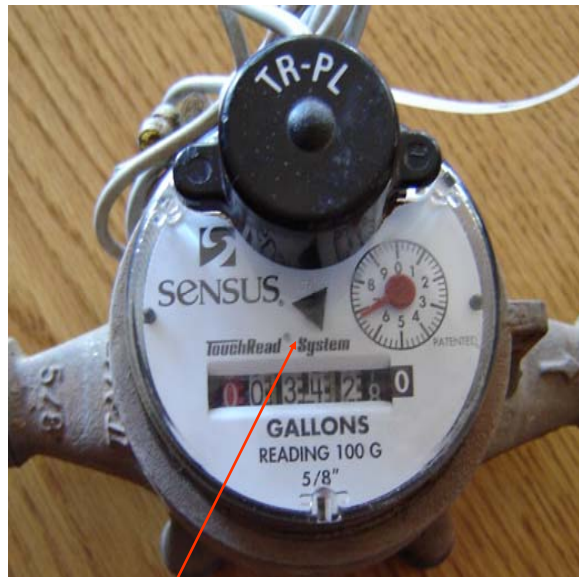
**Use Caution** as you remove the lid, with a tool such as a large screwdriver, so that you do not disturb the wires that are attached to the meter from the touch pad. Visually examine the area around the meter to ensure your safety (Black Widow Spiders are known to nest in meter boxes).

Once you have removed the lid, you will probably have to wipe off the glass cover of the meter with a wet paper towel. The meter will look like one of the two shown on the next page.

### 2) READ YOUR METER:

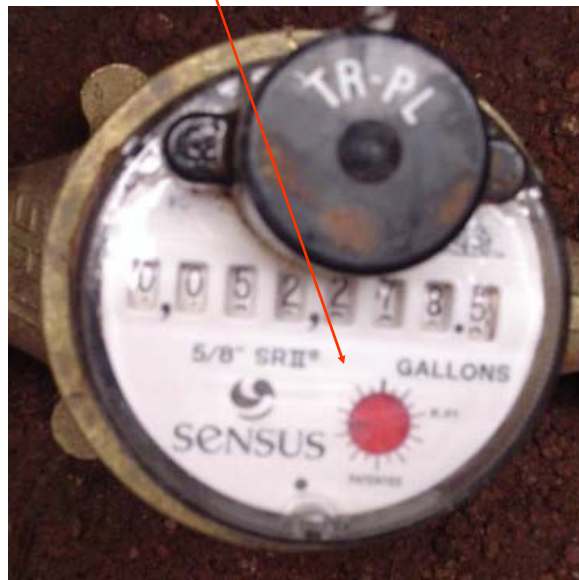
Reading your meter is similar to reading an automobile odometer. Our meters have either 7 or 8 digit numbers on the face. This shows the total number of gallons used since the meter was installed. The Town of Payson meter reading system picks up the second through the fifth numbers as charges are calculated in hundreds of gallons. When reading your own meter; however, simply write down all numbers shown. For example the reading for Meter "A" is 0034280 and the reading for Meter "B" is 00522785.

"A"



Low Flow Indicator  
(Leak Detector)

"B"



### 3) FIGURE YOUR WATER USE:

To calculate your water use, pick a starting point at which to read your meter; record the reading and date. A day or two later, read your meter again. Subtract the first reading from the second to find out how much water was used. For example using the reading on Meter "A":

Second reading.....0035980 gallons

First reading .....0034280 gallons

Water used.....1700 gallons

### 4) MONITOR YOUR WATER USE:

Read your meter on a regular basis to track water use. Keep a record of all readings. You will be able to detect trends from season to season and year to year. If your household changes in any way that affects water use (e.g. new family member, plumbing upgrade, etc.), you will be able to determine the effect of the change.

### 5) CHECK FOR HOUSEHOLD LEAKS:

The black triangular dial on Meter "A" and the red dial on Meter "B" are low flow indicators. These dials will rotate with even a very low flow through the meter. To check for leaks, turn off all known water uses inside and outside the house. If you have an automatic icemaker, make sure it is not operating and turn off evaporative coolers and water softeners. When all water is turned off, the low flow indicator should not move. If the low flow indicator is moving, there is water flowing somewhere on your property. You may refer to our brochure "Stop Water Leaks Now" for helpful suggestions on locating and repairing leaks.

When you have finished reading the meter, carefully replace the meter box cover.