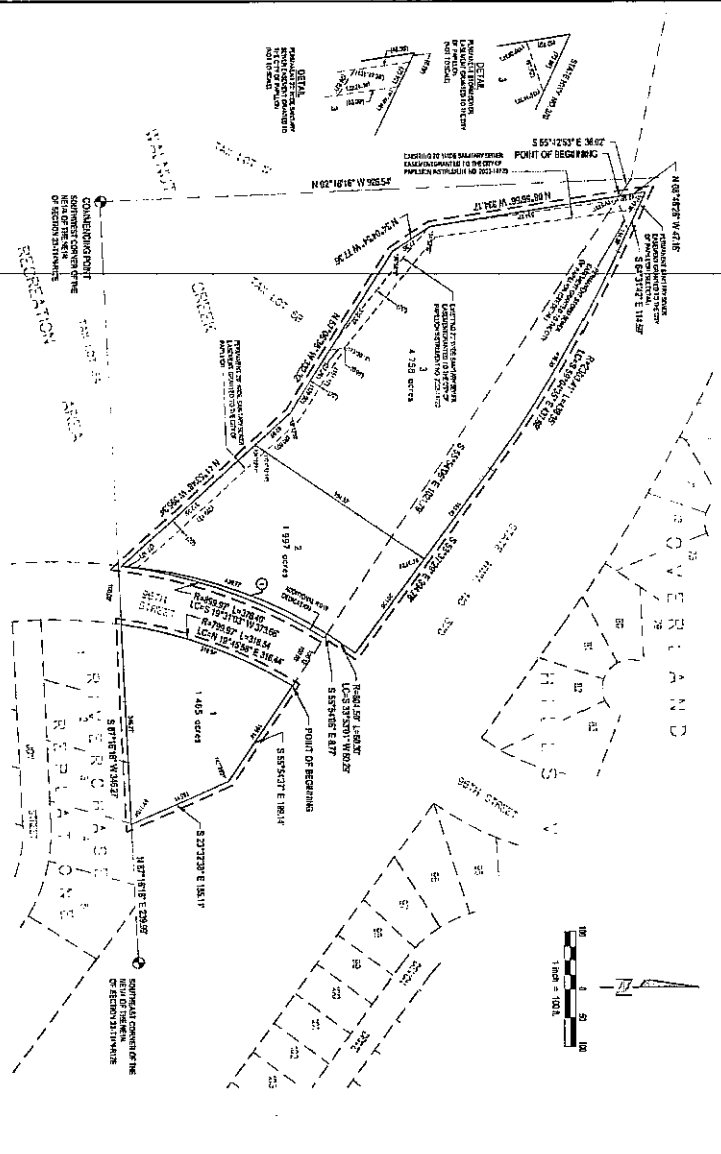


WALNUT CREEK BUSINESS PARK

LOTS 1 THRU 3 INCLUSIVE



DATE	REVISION	BY
11/11/03	1	LS
07/17/03	2	LS
02/25/03	3	LS

- NOTES**
1. ALL ANGLES ARE 90° UNLESS OTHERWISE NOTED
 2. ALL LOTS LIES ARE EQUAL TO CURVED STREET CURVES SHOWN AS RADIUS
 3. ALL DIMENSIONS AND ANGLES SHOWN WITH DIMENSION LINES FOR THE LOCATION OF EASEMENTS.
 4. DIRECT VEHICULAR ACCESS SHALL NOT BE ALLOWED TO STATE HIGHWAY NO. 276 FROM ANY LOT ADJOINING SAID STREETS.

APPROVAL BY PARLIAMOUNT COUNCIL
 The subdivision of Walnut Creek Business Park was approved by the Council of the City of Papillion, Nebraska.

 Mayor

 Date

COUNTY RECORDS CERTIFICATE
 This is to certify that I, the undersigned, have read and examined the plat hereon described in the Surveyor's Certificate and find it to be correct in all respects.

 County Recorder

 Date

REVIEW OF SURVEYOR'S CERTIFICATE
 The plat of Walnut Creek Business Park was reviewed by the Office of the Surveyor General.

 State Surveyor

 Date

APPROVAL OF PARLIAMOUNT COUNCIL ENGINEER
 The subdivision of Walnut Creek Business Park was approved by the Papillion City Engineer.

 City Engineer

 Date

APPROVAL OF PARLIAMOUNT PLANNING COMMISSION
 The subdivision of Walnut Creek Business Park was approved by the Papillion Planning Commission.

 Planning Commission

 Date

APPROVAL OF NEBRASKA STATE ENGINEER
 The subdivision of Walnut Creek Business Park was approved by the State Engineer.

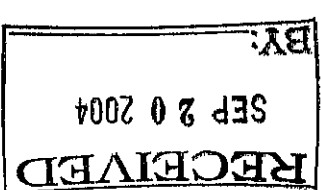
 State Engineer

 Date

APPROVAL OF NEBRASKA STATE SURVEYOR
 The subdivision of Walnut Creek Business Park was approved by the State Surveyor.

 State Surveyor

 Date



Proj. No.	Revision	Date
20040301	1	09/20/04
20040301	2	09/20/04
20040301	3	09/20/04
20040301	4	09/20/04
20040301	5	09/20/04
20040301	6	09/20/04
20040301	7	09/20/04
20040301	8	09/20/04
20040301	9	09/20/04
20040301	10	09/20/04

K:\Projects\2004\0301\01\Plat\Final Design\PLATBASE-000.dwg, 24x36-NS (Plat), 9/20/2004 8:50:46 AM, larryd

E&A CONSULTING GROUP, INC.
 ENGINEERS • PLANNERS • SURVEYORS

12001 D STREET
 OMAHA, NE 68147
 PHONE: (402) 426-6700
 FAX: (402) 426-6706

1100 SOUTH 26TH STREET, SUITE C
 LINCOLN, NE 68502-6401
 PHONE: (402) 434-2200
 FAX: (402) 434-2210

WALNUT CREEK BUSINESS PARK
 PAPILLION, NEBRASKA

FINAL PLAT