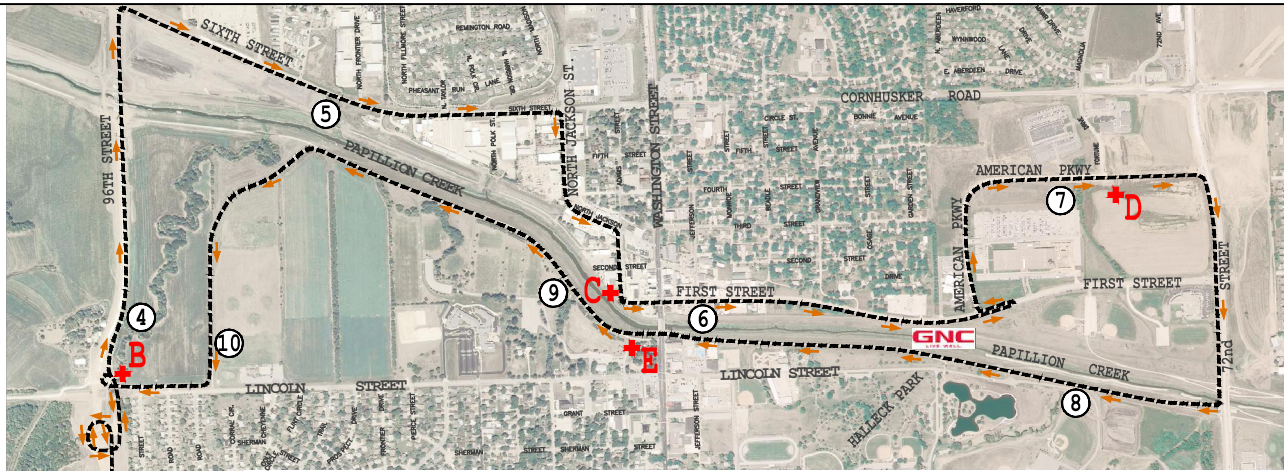


# Half Marathon Course Description:

Start is located on 108th Street 21' South of wood power pole on west side of 108th Street just south of main (middle) entrance to Papillion La Vista South High School parking lot. Proceed south on 108th Street to Schram Road, course turns east at Schram Road, proceed east in the north lane to 96th Street, turn north at 96th Street proceed north in the west lane to the dam maintenance access road entrance, turn west on the dam maintenance access road (rock surfacing), proceed west to the bike trail, turn north onto the bike trail, proceed north on the bike trail heading under HWY 370, continue east and enter on Santa Fe Circle, proceed east in the north lane to 96th Street, turn north onto the bike trail on the west side of 96th Street, guide west on the bike trail just prior to reaching Lincoln Street, proceed to the south and then easterly under the bridge on 96th Street, proceed north on the bike trail on the east side of 96th Street to Cornhusker Road (6th Street), turn east onto Cornhusker, proceed east in the south lane to North Jackson, turn south in the west lane, merge onto North Adams proceeding in the south lane to 1st Street, turn east onto 1st Street, proceed east in the south lane crossing Washington Street (84th Street) proceed to turnaround 19' 7" west of metal light pole west of entrance to 1020 East 1st Street return west in the north lane of 1st Street to American Parkway, turn north into the east lane follow American Parkway as it turns east, proceed east in the south lane to 72nd Street, turn south on 72nd in the west lane proceed south to the bike trail on the north side of the bridge crossing the West Papillion Creek, guide west onto the bike trail crossing the West Papillion Creek, turn west onto the West Papiro bike trail, proceed westerly crossing under Washington Street (84th Street), proceed west and follow the trail as it curves south toward Lincoln Road near the Papillion Parks and Recreation Building, turn west onto the trail on the north side of Lincoln Street, proceed west toward 96th Street guide north following the bike trail as it turns south and crosses under 96th Street, proceed northerly on the trail, guide easterly and then south, proceed south on the bike trail parallel to 96th Street to Santa Fe Circle, turn west onto Santa Fe Circle and proceed west in the north lane, enter onto the bike trail heading under HWY 370, continue south easterly to the dam, turn west onto the Walnut Creek Loop trail, follow the trail to the Papillion LaVista South access trail, proceed westerly on the access trail past the tennis courts entering the parking lot drive, proceed west in the south lane to the parking lot access drive on the west side of the stadium, turn south and proceed south in the west lane of the parking lot access drive to the south side of the stadium, turn east and proceed in the north lane to the east side of the Athletic Maintenance Building, turn north and enter onto the track from the track maintenance path, proceed clockwise around the track to the finish at the 1600M 3200M start located 11 feet south of the south stairway.



## 4th ANNUAL PAPILLION HALF MARATHON

### Sunday, May 15, 2011

#### COURSE MAP

Sponsored by:



**Papillion Parks & Recreation**  
1100 W. Lincoln Rd.  
Papillion, NE 68046  
(402) 597-2041

**Alegent Health**  
Midlands Hospital



Coca-Cola  
Hy-Vee at Shadow Lake  
Pinnacle Bank  
Schemmer & Associates

Edge Physical Therapy  
Omaha Running Club  
Roberts Dairy  
TD2

GNC at Shadow Lake  
Papillion Chiropractic  
Sara Lee  
Trek Bicycle Store



### LEGEND

- HALF MARATHON ROUTE
- ① DISTANCE (MILES)
- +A AID STATION
- GNC ENERGY STATION

PREPARED BY:

