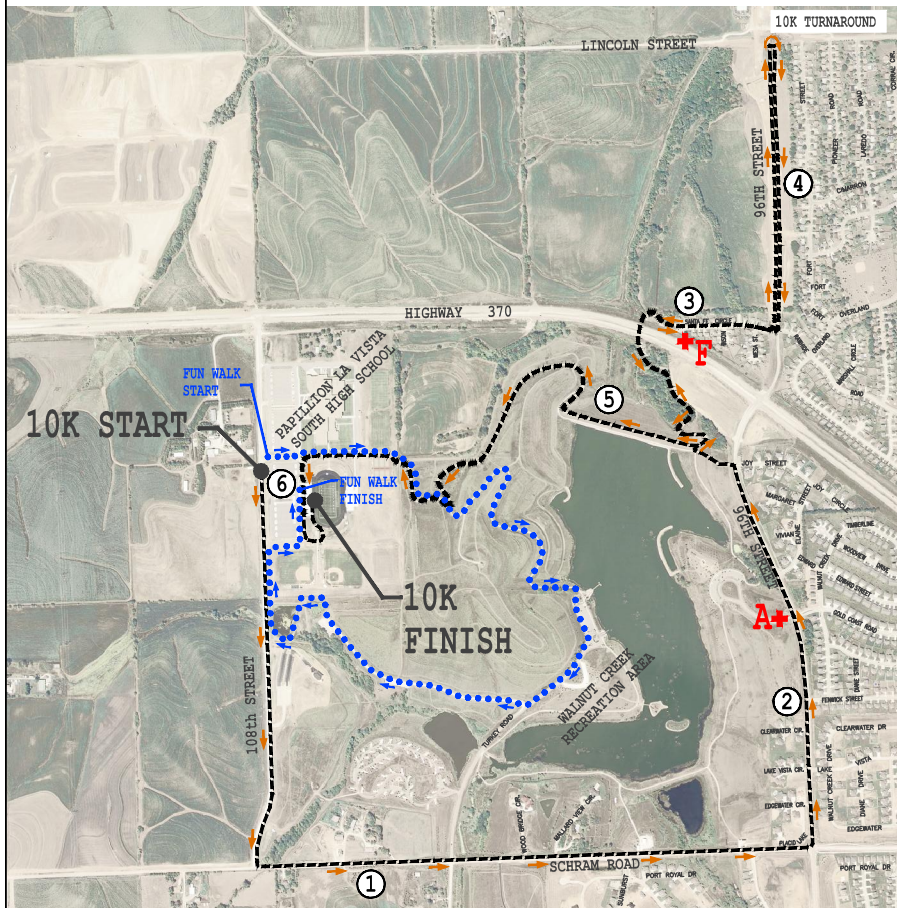


4th ANNUAL PAPIILLION 10K & "KICKIN' IT AT THE CREEK" COMMUNITY FUN WALK

Sunday, May 15, 2011

COURSE MAP



10K Course Description:

Start is located on 108th Street 21' South of wood power pole on west side of 108th Street just south of main (middle) entrance to Papillion La Vista South High School parking lot. Proceed south on 108th Street to Schram Road, course turns east at Schram Road, proceed east in the north lane to 96th Street, turn north at 96th proceed north in the west lane to the dam maintenance access road entrance, turn west on the dam maintenance access road (rock surfacing), proceed west to the bike trail, turn north onto the bike trail, proceed north on the bike trail heading under HWY 370, continue east and enter on Santa Fe Circle, proceed east in the north lane to 96th street, turn north onto the bike trail on the west side of 96th street, proceed north on the bike trail to Lincoln Street to turnaround point located at the intersection of the bike trail and Lincoln Street. Return south in the west lane of 96th Street to Santa Fe Circle, turn west onto Santa Fe Circle and proceed west in the north lane, enter onto the bike trail heading under HWY 370, continue southeasterly to the dam, turn west onto the Walnut Creek Loop trail, follow the trail to the Papillion LaVista South access trail, proceed westerly on the access trail past the tennis courts entering the parking lot drive, proceed west in the south lane to the parking lot access drive on the west side of the stadium, turn south and proceed south in the west lane of the parking lot access drive to the south side of the stadium, turn east and proceed in the north lane to the east side of the Athletic Maintenance Building, turn north and enter onto the track on the tack maintenance path, proceed clockwise around the track to the finish at the 1600M 3200M start located 11 feet south of the south stairway.

Sponsored by:



Papillion Parks & Recreation
1100 W. Lincoln Rd.
Papillion, NE 68046
(402) 597-2041

Alegent Health
Midlands Hospital



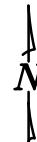
Coca-Cola
Hy-Vee at Shadow Lake
Pinnacle Bank
Schemmer & Associates

Edge Physical Therapy
Omaha Running Club
Roberts Dairy
TD2

GNC at Shadow Lake
Papillion Chiropractic
Sara Lee
Trek Bicycle Store

LEGEND

- FUN WALK ROUTE
- 10K ROUTE
- +A AID STATION
- ① DISTANCE (MILES)



PREPARED BY:

