

Richard Arnold
Vegetation Manager - Transmission

NOTICE OF UPCOMING VEGETATION MANGEMENT WORK

To the Local Municipality,

Public Service Electric and Gas Company (PSE&G) maintains one or more electric transmission right-of-way(s) through your municipality. The electric transmission lines on PSE&G right-of-way are essential for PSE&G to meet its commitment to provide safe, reliable and efficient electric service to consumers throughout New Jersey. Maintaining the vegetation along these transmission lines for proper tree clearance is absolutely necessary to assure:

- The continued safety of homeowners living near the transmission lines.
- The safety of PSE&G employees and contractors working on the power lines.
- The reliability of the electric utility system.

Maintenance of vegetation on right-of-way in your municipality is required at this time; please see highlighted areas on the attached map(s). A list of the nearest cross streets has also been provided. Private contractors working for PSE&G, will **REMOVE ALL INCOMPATIBLE TREES** within the easement and **SIDE TRIM** all branches originating from outside that hang over or cross onto PSE&G's easement along the electric transmission right-of-way. This work will begin on/after January 1, 2020 and will continue throughout 2020. A contractor representative will also notify your municipality and the effected property owners in your community of more specific dates for when crews will be working in your area.

If you have any questions or concerns, please telephone Public Service Electric & Gas Transmission Vegetation Management Department at 732-289-5292.

Thank you,

Richard Arnold
PSE&G Vegetation Manager - Transmission

N.J.A.C. 14:5-9.1

NEW JERSEY ADMINISTRATIVE CODE
Copyright (c) 2016 by the New Jersey Office of Administrative Law

*** This file includes all Regulations adopted and published through the ***
*** New Jersey Register, Vol. 48, No. 1, January 4, 2016 ***

**TITLE 14. PUBLIC UTILITIES
CHAPTER 5. ELECTRIC SERVICE
SUBCHAPTER 9. ELECTRIC UTILITY LINE VEGETATION MANAGEMENT**

N.J.A.C. 14:5-9.1 (2016)

§ 14:5-9.1 Purpose and scope

This subchapter sets forth requirements that EDCs shall follow in managing vegetation in proximity to an energized conductor in order to ensure public safety and the efficient and reliable supply of electric power using integrated vegetation management and sound arboricultural practices.

HISTORY:

Recodified from N.J.A.C. 14:5-8.1 and amended by R.2008 d.57, effective March 17, 2008.

See: 39 N.J.R. 3716(a), 40 N.J.R. 1684(a).

Substituted "EDCs" for "electric public utilities".

Amended by R.2015 d.138, effective August 17, 2015.

See: 47 N.J.R. 631(a), 47 N.J.R. 2165(c).

Inserted "using integrated vegetation management and sound arboricultural practices".

§ 14:5-9.2 (Reserved)

§ 14:5-9.3 General provisions

(a) An EDC shall ensure that vegetation management is conducted in accordance with this subchapter on any energized conductors of 600 volts and higher, whether for distribution or transmission, that the electric public utility owns, in whole or in part.

(b) Each EDC shall obtain, and shall ensure that its contractors obtain, all required permits and licenses prior to commencement of vegetation management.

(c) An EDC that utilizes chemical or biological agents in vegetation management shall comply with any laws or regulations governing the use of those biological and chemical agents.

(d) Each EDC shall employ a vegetation manager, who is an electric utility arborist. The VM shall be a

HISTORY:

Recodified from N.J.A.C. 14:5-8.3 and amended by R.2008 d.57, effective March 17, 2008.

See: 39 N.J.R. 3716(a), 40 N.J.R. 1684(a).

Substituted "EDC" for "electric public utility" throughout; in (d), deleted "(VM)" following "vegetation manager" and updated the N.J.A.C. references; in (e), substituted "and State" for ", State; county, and municipal" and substituted the second occurrence of "EDC" for "electric utility"; in (f), inserted "incremental" and substituted "EDC's" for "electric public utility's"; in (g)1, inserted "transmission line" and "required", and substituted "N.J.A.C. 14:5-9.6" for "transmission lines"; in (g)4, inserted "or other vegetation management"; and rewrote (i).

Amended by R.2015 d.138, effective August 17, 2015.

See: 47 N.J.R. 631(a), 47 N.J.R. 2165(c).

In (d), deleted ", as defined at N.J.A.C. 14:5-9.2" following "arborist", and substituted "website" for "web site"; in (d) and (g)1, updated the N.J.A.C. reference; rewrote (f); in (g)4, substituted the second occurrence of "EDC" for "electric public utility" and "additional" for "these"; and in (i), deleted "to achieve full compliance by December 18, 2010" following the N.J.A.C. reference.

§ 14:5-9.4 Maintenance cycle

(a) An EDC shall perform an annual visual inspection of all energized conductors that are associated with a transmission line, to determine whether vegetation management is needed. The visual inspection may be performed from the ground except in cases where the conductor is not visible from the ground. The EDC shall take into account the height of the vegetation and the distance of the vegetation from the energized conductor, in determining whether vegetation management is needed.

(b) An EDC shall perform vegetation management on vegetation that is close enough to pose a threat to its energized conductors at least once every four years.

(c) In addition to the maintenance required in (b) above, if an EDC becomes aware of any vegetation, including hazard trees, close enough to its energized conductors to affect reliability or safety prior to the next required vegetation management activity the electric utility shall ensure that necessary vegetation management is promptly performed as required under N.J.A.C. 14:5-9.6 and 9.7 or 9.8, as applicable.

(d) If the EDC determines that vegetation described under (c) above poses an immediate safety hazard, the EDC shall not be subject to the notice requirements at N.J.A.C. 14:5-9.10. However, the EDC shall, to the extent practicable, make a reasonable effort to notify the customers and property owners described at N.J.A.C. 14:5-9.10(b)1 and 2 prior to performing the vegetation management.

HISTORY:

Recodified from N.J.A.C. 14:5-8.4 and amended by R.2008 d.57, effective March 17, 2008.

See: 39 N.J.R. 3716(a), 40 N.J.R. 1684(a).

Substituted "EDC" for "electric public utility" throughout; in (a), inserted "that are associated with a transmission line"; rewrote (c); and added (d).

Amended by R.2015 d.138, effective August 17, 2015.

See: 47 N.J.R. 631(a), 47 N.J.R. 2165(c).

Rewrote (c); and in (d), updated the N.J.A.C. references.

Society of Arboriculture and may be obtained at
<http://www.isaarbor.com/store/product.aspx?ProductID=65>;

5. Pruning, Trimming, Repairing, Maintaining, and Removing Trees, and Cutting Brush--Safety Requirements, 2012. This document, also known as ANSI Z133.1, is published by the American National Standards Institute, and may be obtained at www.ansi.org;

6. Native Trees, Shrubs And Vines For Urban And Rural America: A Planting Design Manual for Environmental Designers, by Hightshoe, G.L., 1987, is published by John Wiley and Sons and may be obtained from various resellers;

7. Manual of woody landscape plants 5th Ed., by Michael A. Dirr. Stipes Publishing, LLC; 5th edition (August, 1998), and may be obtained from various resellers;

8. Hortus Third: A concise dictionary of plants cultivated in the United States and Canada, by L.H. Bailey Hortorium, 1976, and may be obtained from various resellers; and

9. National Electric Safety Code C2-2012. ISBN: 9780738165882 is published by the Institute of Electrical and Electronics Engineers, Inc., and may be purchased at www.ieee.org.

(b) Where multiple standards or methods listed at (a) above would apply or conflict, the VM or his or her designee shall select the most appropriate standard or method under the circumstances.

(c) Each EDC shall develop its own vegetation management standards and guidelines, which shall be consistent with this subchapter. In developing these standards and guidelines, an EDC shall prioritize work based upon:

1. The extent of the potential for vegetation to interfere with the energized conductor;
2. The voltage of the affected energized conductor;
3. The relative importance of the affected energized conductor in maintaining safety and reliability; and
4. The presence and condition of any hazard trees.

(d) Each EDC shall provide a copy of its vegetation management standards and guidelines to the Board as a chapter in the Annual System Performance Report. If an EDC makes a change in its vegetation management standards and guidelines, the utility shall provide Board staff with a copy of the change no later than 30 days prior to implementing the change.

(e) Each EDC's vegetation management standards and guidelines shall cover, at a minimum, all of the following activities:

1. Tree pruning and removal;
2. The procedures for handling the removal of hazard trees;
3. Vegetation control around poles, substations, and other energized conductors;

transmission line and the closest vegetation, which are set forth in the North American Electric Reliability Corporation (NERC) FAC-003-3, which is incorporated herein by reference, as amended and supplemented and available at www.nerc.com.

(c) Except as provided at (f) below, the following shall apply in the wire zone:

1. An EDC shall allow woody plants that are agricultural crops that naturally mature at 12 feet or less;
2. Other than as provided at (c)1. above, the EDC shall not allow woody plants that mature above three feet tall to grow in the wire zone, and the preferred growth shall be grasses or a low-growing, compatible, scrub-shrub plant community to obtain a meadow effect where possible.

(d) Except as provided at (f) below, the EDC shall apply integrated vegetation management (IVM) in the border zone. IVM is a best management practice conveyed in the American National Standard for Tree Care Operations, Part 7 (ANSI 2006) and the International Society of Arboriculture's Best Management Practices: Integrated Vegetation Management (Miller 2007).

(e) In addition to meeting the other requirements in this section, each EDC shall ensure that the following requirements for transmission lines are met, except for those instances set forth in (f) below:

1. Clearing under transmission lines shall be wide enough within the EDC's right of way so that no vegetation or parts of vegetation will grow or fall into the transmission lines;
2. Only grass vegetation shall be permitted to grow within three feet of any structure;
3. Where an EDC has cleared a right of way of vegetation and bare soil is exposed, the EDC shall comply with the soil erosion requirements of the applicable soil conservation district in order to prevent soil erosion. A list of the soil conservation districts in New Jersey may be found at www.state.nj.us/agriculture/divisions/anr/nrc/conservdistricts.html;
4. To the extent that any plant species identified as invasive and non-indigenous to New Jersey poses a threat to the maintenance of the right of way or a hazard to electrical transmission conductors, the EDC shall not plant that species in the right of way, and shall make reasonable efforts to actively eliminate from the entire right of way the species identified as invasive and non-indigenous, see Snyder, David and Sylvan R. Kaufman, 2004. An overview of non-indigenous plant species in New Jersey. New Jersey Department of Environmental Protection, Division of Parks and Forestry, Office of Natural Lands Management, Natural Heritage Program, Trenton, NJ (available at <http://www.nj.gov/dep/parksandforests/natural/heritage/InvasiveReport.pdf>, and incorporated by reference herein, including any supplements and amendments thereto). To do so, the EDC shall use the best integrated vegetation management practices available and practical; and
5. Each year in the March billing cycle, or two months prior to the commencement of vegetation management work on a particular property, whichever is earlier, each EDC shall advise customers of the requirements in this subsection, through a direct notification.

(f) Notwithstanding (d) and (e) above, an EDC may leave trees and other woody vegetation within the transmission right of way under any of the following conditions:

See: 41 N.J.R. 2084(a), 41 N.J.R. 2633(a), 42 N.J.R. 508(a).

Rewrote (b), (c), (d), (g) and (h)3; deleted former (e)2 through (e)5; recodified former (e)6 through (e)9 as (e)2 through (e)5; in (e)4, inserted "not plant that species in the right of way, and shall", in the introductory paragraph of (f), inserted "(d) and"; in the introductory paragraph of (h), substituted "by May 31" for "before June 1"; and added (i).

Recodified from N.J.A.C. 14:5-9.6 and amended by R.2015 d.138, effective August 17, 2015.

See: 47 N.J.R. 631(a), 47 N.J.R. 2165(c).

Rewrote the section. Former N.J.A.C. 14:5-9.7, Training, recordkeeping and reporting, recodified to N.J.A.C. 14:5-9.9.

§ 14:5-9.8 Distribution line vegetation management

(a) In addition to the other requirements of this subchapter, distribution lines are subject to the requirements in this section.

(b) Distribution lines shall be inspected and trimmed to maintain the horizontal clearance distance appropriate for the operating voltage and other factors as specified by the EDC's vegetation management standards as required by N.J.A.C. 14:5-9.6.

1. Starting on January 1, 2016, vegetation management practices shall include removal of all overhanging vegetation from the lock out zone on the distribution circuit. For circuits that do not have a protective device, the EDC's engineering department and VM will designate the area referred to as the lock out zone.

2. Mature trees may be exempt from the above requirements at the reasonable discretion of the EDC's VM as it pertains to the lock out zone.

HISTORY:

New Rule, R.2015 d.138, effective August 17, 2015.

See: 47 N.J.R. 631(a), 47 N.J.R. 2165(c).

Former N.J.A.C. 14:5-9.8, Public notice of planned vegetation management activity, recodified to N.J.A.C. 14:5-9.10.

§ 14:5-9.9 Training, recordkeeping, and reporting

(a) Each EDC shall ensure that:

1. Qualified OSHA and ANSI Z133 line clearance employees or contractors perform vegetation management for the EDC;

2. All such employees or contractors are trained in the proper care of trees and other woody plants in order to provide safe, reliable electric service; and

ii. Percentage of electric overhead transmission corridor mileage inspected for the reporting year of the Annual System Performance Report (one column); and

iii. Projected percentage of electric overhead transmission corridor mileage to be inspected for each of the three years following the reporting year of the Annual System Performance Report (three columns); and

2. A table that includes the following columns:

i. Percentage of distribution circuit length inspected (and trimmed as necessary) for each of the three years prior to the reporting year of the Annual System Performance Report (three columns);

ii. Percentage of distribution circuit length inspected (and trimmed as necessary) for the reporting year of the Annual System Performance Report (one column); and

iii. Projected percentage of distribution circuit length to be inspected (and trimmed as necessary) for each of the three years following the reporting year of the Annual System Performance Report (three columns).

HISTORY:

Recodified from N.J.A.C. 14:5-8.7 and amended by R.2008 d.57, effective March 17, 2008.

See: 39 N.J.R. 3716(a), 40 N.J.R. 1684(a).

Substituted "EDC" for "electric public utility" throughout; rewrote (a) and (b); in the introductory paragraph of (c), inserted "be retained for five years and shall"; and in (d), substituted "the Annual System Performance Report" for "an annual report" and "May 31 of" for "May 31st".

Recodified from N.J.A.C. 14:5-9.7 and amended by R.2015 d.138, effective August 17, 2015.

See: 47 N.J.R. 631(a), 47 N.J.R. 2165(c).

Section was "Training, recordkeeping and reporting". Rewrote (d). Former N.J.A.C. 14:5-9.9, Outreach programs, recodified to N.J.A.C. 14:5-9.11.

§ 14:5-9.10 Public notice of planned vegetation management activity

(a) Unless specifically stated elsewhere in this subchapter, each EDC shall make a diligent attempt to notify all municipal governments, customers, and property owners that may be affected by planned vegetation management activity on the EDC's distribution or transmission system. This requirement will be satisfied if the EDC provides written notice to customers and property owners in accordance with (b) and (c) below at least seven days, but not more than 45 days, prior to performing any vegetation management activity; and provides notice to municipal governments in accordance with (f) and (g) below.

(b) For distribution circuits, notice shall be provided to the following customers and property owners by separate direct mailing, door hanger, or any other Board-approved method:

1. All customers upon whose property runs any portion of the right of way or easement that will be maintained; and

utility's", and inserted the last sentence; and added (h).

Recodified from N.J.A.C. 14:5-9.8 and amended by R.2015 d.138, effective August 17, 2015.

See: 47 N.J.R. 631(a), 47 N.J.R. 2165(c).

In (f), substituted "municipal clerk," for "town clerk". Former N.J.A.C. 14:5-9.10, Penalties, recodified to N.J.A.C. 14:5-9.12.

§ 14:5-9.11 Outreach programs

(a) Each EDC shall conduct an annual public education program to inform its customers, as well as the municipalities and public agencies in the EDC's service territory, of the importance of vegetation management, and of the EDC's role and responsibility in managing vegetation near electric lines.

(b) The public education program required under this section shall be implemented by direct mail or another method approved by the Board.

(c) Each EDC shall post its public education materials on its website.

(d) As part of its education program under this section, the EDC shall provide on its website illustrations of typical configurations of transmission lines and easements, as necessary to comply with the requirement in (a) above to inform the public regarding the EDC's responsibilities in performing vegetation management under this subchapter.

HISTORY:

Recodified from N.J.A.C. 14:5-8.9 and amended by R.2008 d.57, effective March 17, 2008.

See: 39 N.J.R. 3716(a), 40 N.J.R. 1684(a).

In (a) and (c), substituted "EDC" for "electric public utility"; in (a), substituted "EDC's" for "electric public utility" twice; and added (d).

Recodified from N.J.A.C. 14:5-9.9 by R.2015 d.138, effective August 17, 2015.

See: 47 N.J.R. 631(a), 47 N.J.R. 2165(c).

§ 14:5-9.12 Penalties

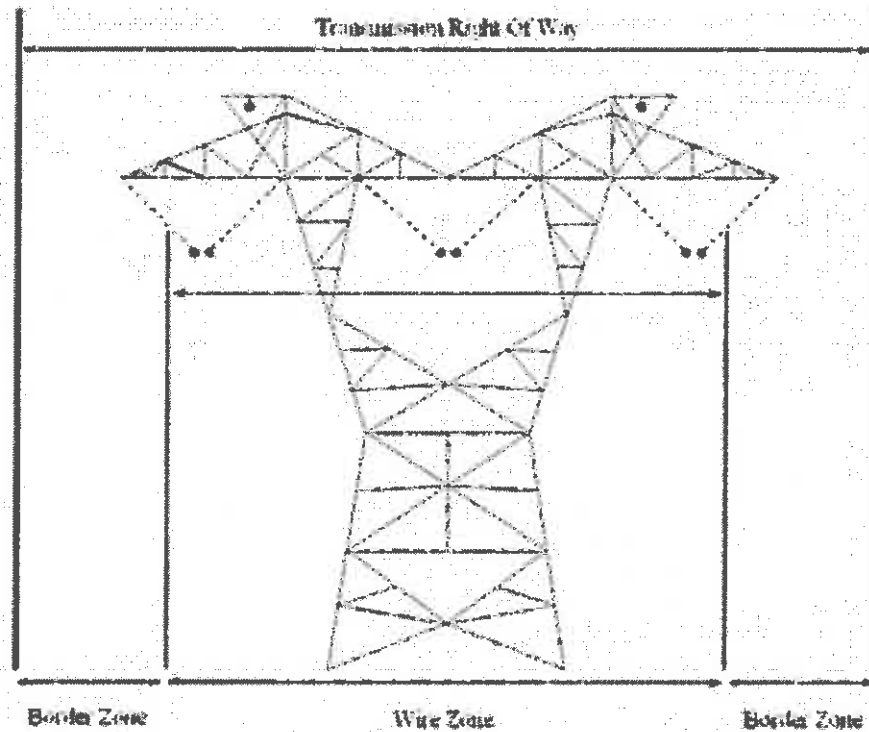
(a) Failure to comply with any provision of this subchapter shall subject the violator to penalties in accordance with the Board's regulatory and statutory authority.

(b) An EDC that violates this subchapter may be subject to monetary penalties for each day the violation occurs. The Board shall notify the EDC of the violation(s) in writing. Upon receipt of the written notice of violation, the EDC shall have five business days to correct the violation(s). Any failure to correct the violation shall subject the EDC to penalties as determined by the Board per day for each violation, calculated from the day such written notice was received by the EDC and up to the maximum penalty permitted by law.

(c) Penalties imposed under this subchapter are in addition to, not a replacement for, other fines and/or

Transmission Right-of-Way Compatible Tree / Shrub List

The following is a list of trees & shrubs that are generally compatible within the border zone of the transmission right-of-way; as a rule only woody vegetation with a mature height of 3' or less is allowed in the wire zone. This list is subject to change and accurate only in ideal circumstances. Site specific factors such as conductor height, terrain and corridor width must be taken into account when determining where on the right-of-way and which, if any, of the listed species are indeed compatible.



* The wire zone is the area directly under the conductors and extending 15' on each side; the border zone extends from this point out to the edge of the right-of-way.

Arborviate, Emerald Green
Thuja occidentalis 'Emeral Green'
Height 8'-10'

Arborviate, Nigra
Thuja occidentalis 'Nigra'
Height 10'-14'

Butterfly Bush
Buddleia Davidii
Height 4'-5'

Honeysuckle, Freedom
Lonicera x 'Freedom'
Height 6'-9'

Inkberry
Ilex glabra
Height 4'-8'

Lilac, Fragrant
Syringa vulgaris
Height 8'-15'

Lilac, Hungarian
Syringa josikaea
Height 8'-10'

Magnolia, Ann
Magnolia x 'Ann'
Height 8'-10'

Maple, Amur
Acer ginnala 'Flame'
Height 15'-20'

Maple, Laceleaf Japanese
Acer palmatum disssectum
Height 4'-6'

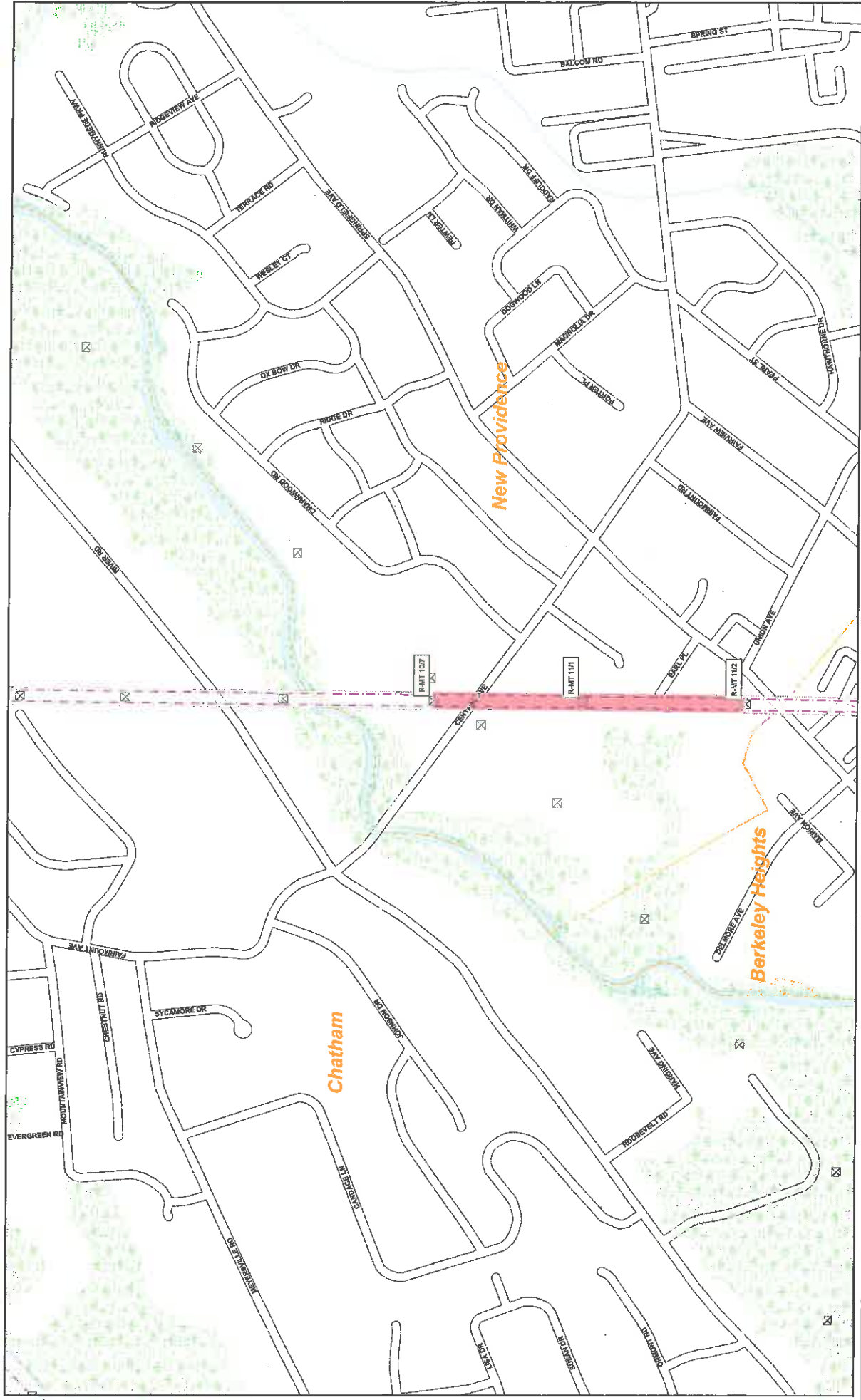
Northern Bayberry, Northern
Myrica pensylvanica
Height 5'-10'

Pear, Trinity Flowering
Pyrus calleryana 'Trinity'
Height 15'-20'

Pear, Korean Sun
Pyrus fauriei 'Westwood'
Height 15'-20'

New Providence Boro

<u>ROW Name</u>	<u>Structure ID</u>	<u>Cross Street</u>
ROSELAND - METUCHEN	R-MT 10/7-11/1	Central Ave
ROSELAND - METUCHEN	R-MT 11/1-11/2	Central Ave
ROSELAND - METUCHEN	R-MT 11/2-11/3	Springfield Ave



Plot Date: 8/25/2010	Plotted By: CMWFL	Plotted For: Vegetation Management	Scale: 1" equals 500'
Transmission	PUBLIC SERVICE ELECTRIC & GAS COMPANY Systems Transmission Vegetation Management Geographic Information System	Project: New Providence Boro Transmission	Sheet Number: 1