

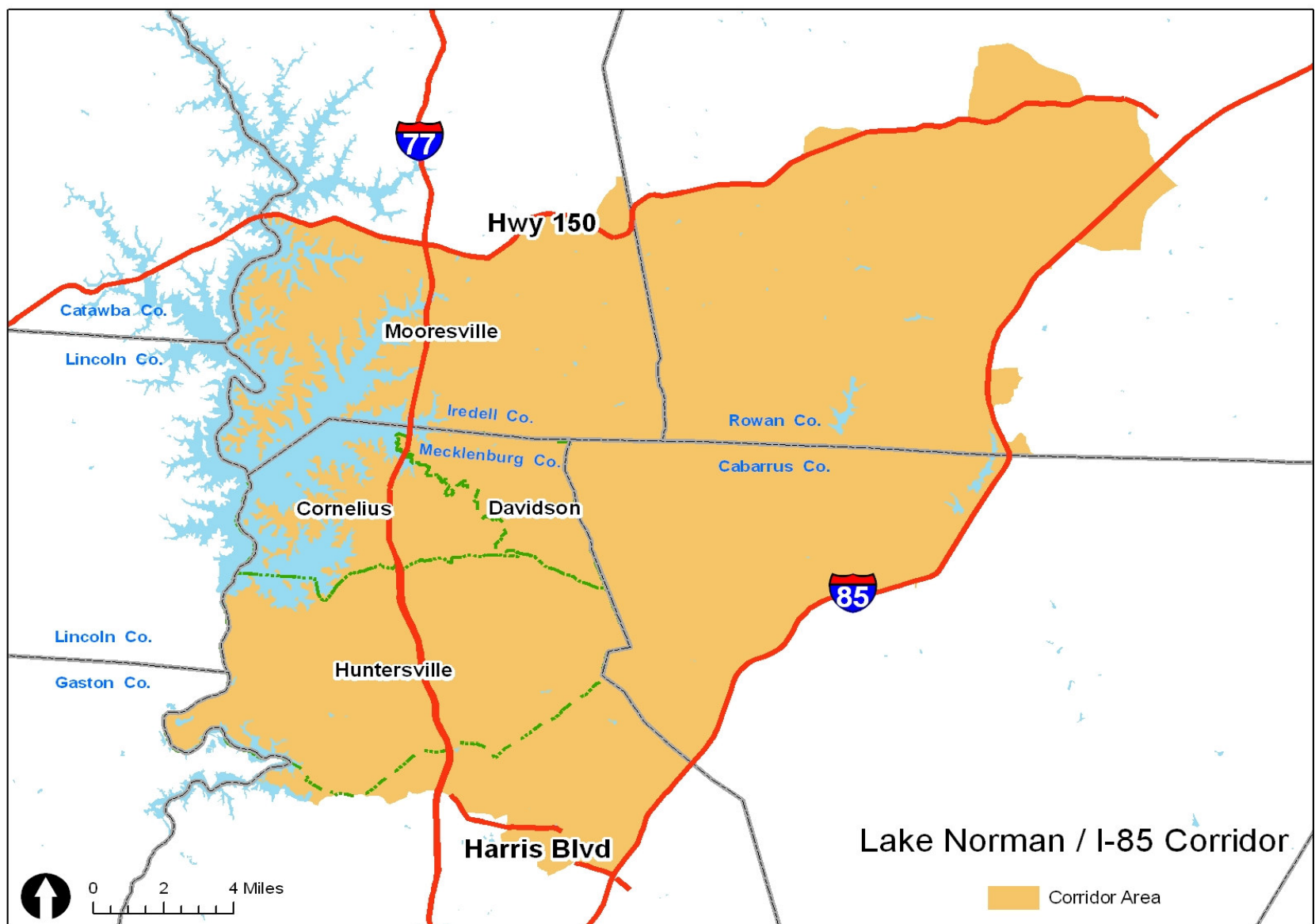
MAYOR'S TRANSPORTATION TASK FORCE

**POPULATION FIGURES & PROJECTIONS
MOORESVILLE, DAVIDSON, CORNELIUS, HUNTERSVILLE &
LAKE NORMAN/I-85 CORRIDOR
1990 -2030**

	1990	2000	2007 ¹	2010	2020	2030
Mooreville ²	14,000 ³	27,000	35,500	37,000	48,000	61,000
Davidson ²	4,500	8,000	10,000	12,000	18,000	22,000
Cornelius ²	7,200	14,000	21,000	22,000	29,000	36,000
Huntersville ²	10,400	28,000	46,000	48,000	74,000	96,000
TOTALS:	36,100	77,000	112,500	119,000	169,000	215,000

- 1. Town estimates
- 2. Town limits & ETJ
- 3. Mooresville estimate

Data Source: Charlotte DOT (unless otherwise noted)



	1990	2000	2007	2010	2020	2030
LAKE NORMAN/ I-85 CORRIDOR ¹	91,422 ²	195,000	262,000	270,000	353,000	432,000

- 1. Area encompassed by: Lake Norman, I-85, NC 150 & Harris Blvd
- 2. Estimate