

FOR LEASE

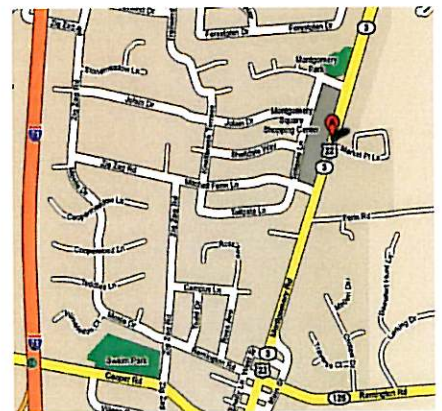
9990
Montgomery Rd.

3,269 sq. ft. available
\$15.95/sq. ft. gross



Cincinnati, Ohio 45242

- Second Floor Office Space
- Located in the heart of Montgomery
- Ample surface parking
- Beautifully maintained building
- Monument signage may be available
- Building is all electric and electric is separately metered



For more information, contact:

Nick Barela
nick.barela@cassidyurley.com
513-549-5440

Joe Janszen
joe.janszen@cassidyurley.com
513-763-3011

221 East Fourth Street
26th Floor
Cincinnati, Ohio 45202

cassidyurley.com

**Cassidy
Turley** Commercial
Real Estate Services

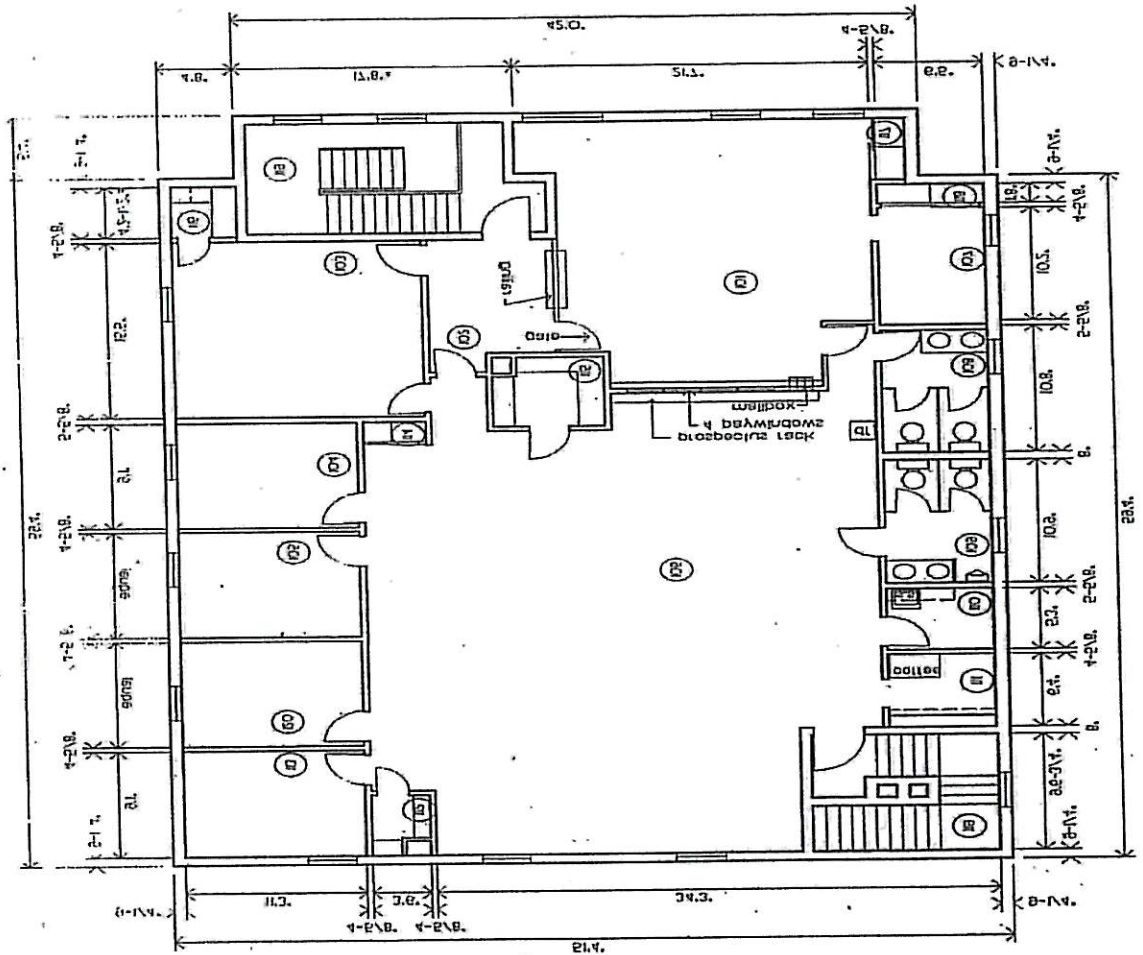
The information contained herein was obtained from sources we consider reliable. We cannot be responsible, however, for errors, omissions, prior sales, withdrawal from the market or change in price. Seller and broker make no representation as to the environmental condition of the property and recommend purchaser's independent investigation.

FLOOR PLAN

1. ALL DIMENSIONS ARE IN FEET AND INCHES.
 2. ALL DIMENSIONS ARE TO FACE UNLESS NOTED OTHERWISE.
 3. ALL DIMENSIONS ARE TO CENTERLINE UNLESS NOTED OTHERWISE.
 4. ALL DIMENSIONS ARE TO CENTERLINE UNLESS NOTED OTHERWISE.
 5. ALL DIMENSIONS ARE TO CENTERLINE UNLESS NOTED OTHERWISE.
 6. ALL DIMENSIONS ARE TO CENTERLINE UNLESS NOTED OTHERWISE.
 7. ALL DIMENSIONS ARE TO CENTERLINE UNLESS NOTED OTHERWISE.
 8. ALL DIMENSIONS ARE TO CENTERLINE UNLESS NOTED OTHERWISE.
 9. ALL DIMENSIONS ARE TO CENTERLINE UNLESS NOTED OTHERWISE.
 10. ALL DIMENSIONS ARE TO CENTERLINE UNLESS NOTED OTHERWISE.

1. ALL DIMENSIONS ARE IN FEET AND INCHES.
 2. ALL DIMENSIONS ARE TO FACE UNLESS NOTED OTHERWISE.
 3. ALL DIMENSIONS ARE TO CENTERLINE UNLESS NOTED OTHERWISE.
 4. ALL DIMENSIONS ARE TO CENTERLINE UNLESS NOTED OTHERWISE.
 5. ALL DIMENSIONS ARE TO CENTERLINE UNLESS NOTED OTHERWISE.
 6. ALL DIMENSIONS ARE TO CENTERLINE UNLESS NOTED OTHERWISE.
 7. ALL DIMENSIONS ARE TO CENTERLINE UNLESS NOTED OTHERWISE.
 8. ALL DIMENSIONS ARE TO CENTERLINE UNLESS NOTED OTHERWISE.
 9. ALL DIMENSIONS ARE TO CENTERLINE UNLESS NOTED OTHERWISE.
 10. ALL DIMENSIONS ARE TO CENTERLINE UNLESS NOTED OTHERWISE.

1. ALL DIMENSIONS ARE IN FEET AND INCHES.
 2. ALL DIMENSIONS ARE TO FACE UNLESS NOTED OTHERWISE.
 3. ALL DIMENSIONS ARE TO CENTERLINE UNLESS NOTED OTHERWISE.
 4. ALL DIMENSIONS ARE TO CENTERLINE UNLESS NOTED OTHERWISE.
 5. ALL DIMENSIONS ARE TO CENTERLINE UNLESS NOTED OTHERWISE.
 6. ALL DIMENSIONS ARE TO CENTERLINE UNLESS NOTED OTHERWISE.
 7. ALL DIMENSIONS ARE TO CENTERLINE UNLESS NOTED OTHERWISE.
 8. ALL DIMENSIONS ARE TO CENTERLINE UNLESS NOTED OTHERWISE.
 9. ALL DIMENSIONS ARE TO CENTERLINE UNLESS NOTED OTHERWISE.
 10. ALL DIMENSIONS ARE TO CENTERLINE UNLESS NOTED OTHERWISE.



For more information, contact:

Nick Barela
 nick.barela@cassidytruley.com
 513-549-5440

Joe Janszen
 joe.janszen@cassidytruley.com
 513-763-3011

cassidytruley.com

