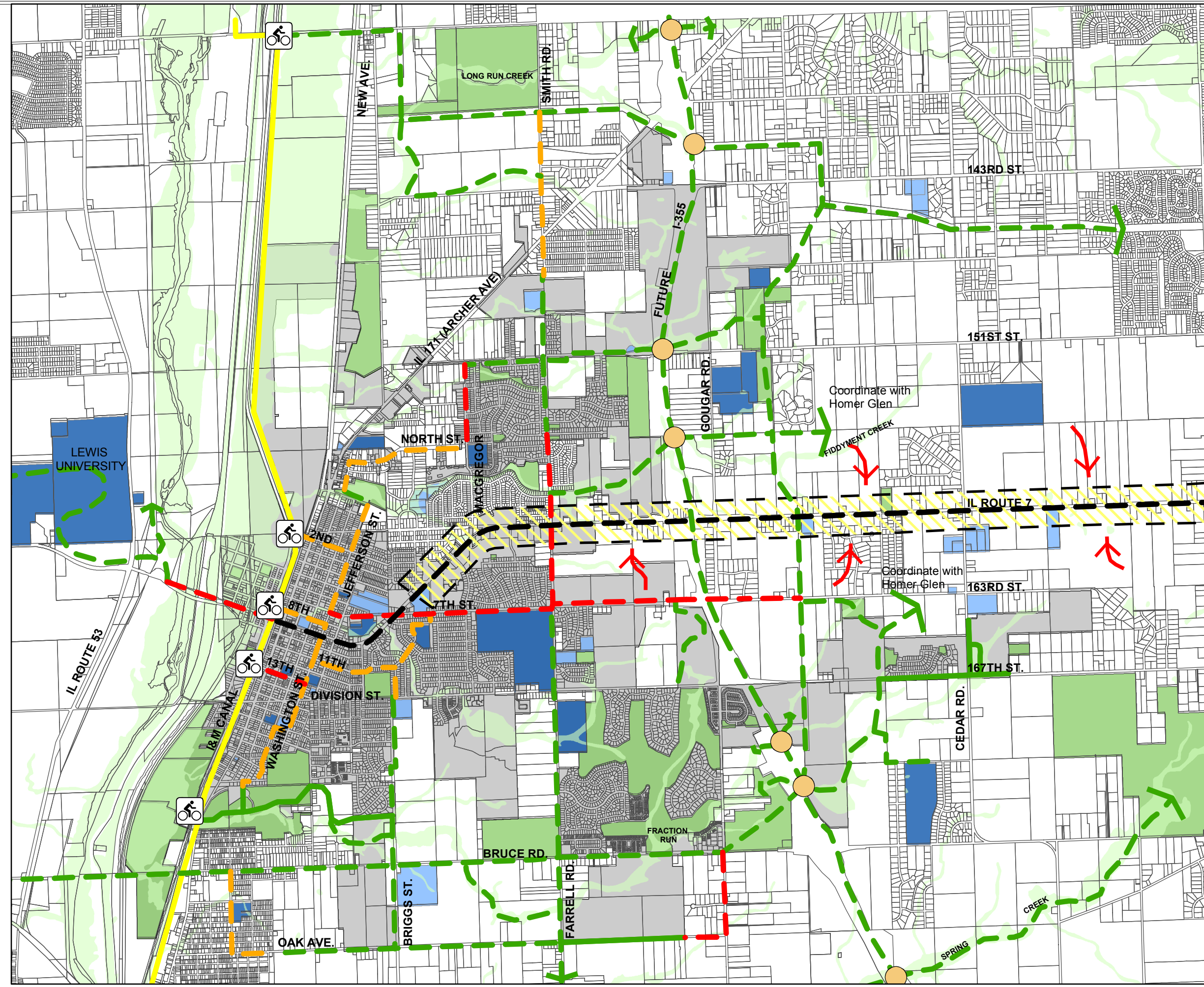




**CITY OF  
LOCKPORT,  
ILLINOIS**

# BICYCLE/ PEDESTRIAN SYSTEM MASTER PLAN



### Legend

- Proposed Trail Access Point
- Proposed I-355 Underpass
- I & M Canal Trail
- Existing/Planned Off-Road
- Proposed Off-Road
- Proposed On-Road Bike Lane
- Proposed On-Road Shared Route
- Lockport Corporate Limits
- Civic Building
- School
- Parks/Open Spaces
- Floodplain
- Parcels
- Future Route 7 Development Corridor
- Future Connections To Route 7

Figure 3

June 2003

