

Attachment 20

Electric Service Information



City of Farmington

Public Works Department

12 South Franklin Street, Farmington, Missouri 63640

Phone: 573.756.0608 Fax: 573.756.5161

www.farmington-mo.gov

March 2, 2016

David Grimes
Deputy Director
Southeast Missouri Regional Planning Commission
1 West Saint Joseph Street
P.O. Box 366
Perryville, MO 63775

Dear Mr. Grimes,

Below you will find the requested information:

- **4.7.2 Electric Service**

- Contact: Bruce Belvin

- Electric Foreman

- 110 W. Columbia Street

- Farmington, MO 63640

- (573)701-4567

- bbelvin@farmington-mo.gov

- At the site there is 4/0 underground wire providing power in both 120/208 volts and 277/480 volts. Multiple 2500 kVA transformers may be installed at this property depending on the user's needs.

- See attached map for line size

- **4.7.4 Water**

- Contact: Casey Barnhouse

- Water / Sewer Foreman

- 110 W. Columbia Street

- Farmington, MO 63640

- (573)218-8260

- cbarnhouse@farmington-mo.gov

- There are three water hydrants on site:

- 1. Hydrant # 13-23

- Static - 92

- Residual - 72

- PSI - 41

- GPM - 1,075

- 2. Hydrant # 13-24

- Static - 90

- Residual - 58

- PSI - 40

- GPM – 1,062
- 3. Hydrant #: 13-25
 - Static – 87
 - Residual – 87
 - PSI – 42
 - GPM – 1,088
- 1,000 GPM excess capacity
- See attached map for line size

- **4.7.7 Sanitary Sewer**

- Contact: Casey Barnhouse
Water / Sewer Foreman
110 W. Columbia Street
Farmington, MO 63640
(573)218-8260
cbarnhouse@farmington-mo.gov
- Capacity of sewer system (gallons per day): Currently there is no excess sewer system capacity. However, an engineered plan for a 10" gravity sewer main has been created and approved by the Department of Natural Resources that will provide 600,000 gallons per day at the south of edge of the parcels.
- The sewer lines on site are 8"
- See attached ECHO Report

- **4.7.8 Storm Sewer**

- Contact: Robert Sullivan
Development Coordinator
110 W. Columbia Street
Farmington, MO 63640
(573)631-6897
rsullivan@farmington-mo.gov
- There are no storm sewers on site
- See attached contour map

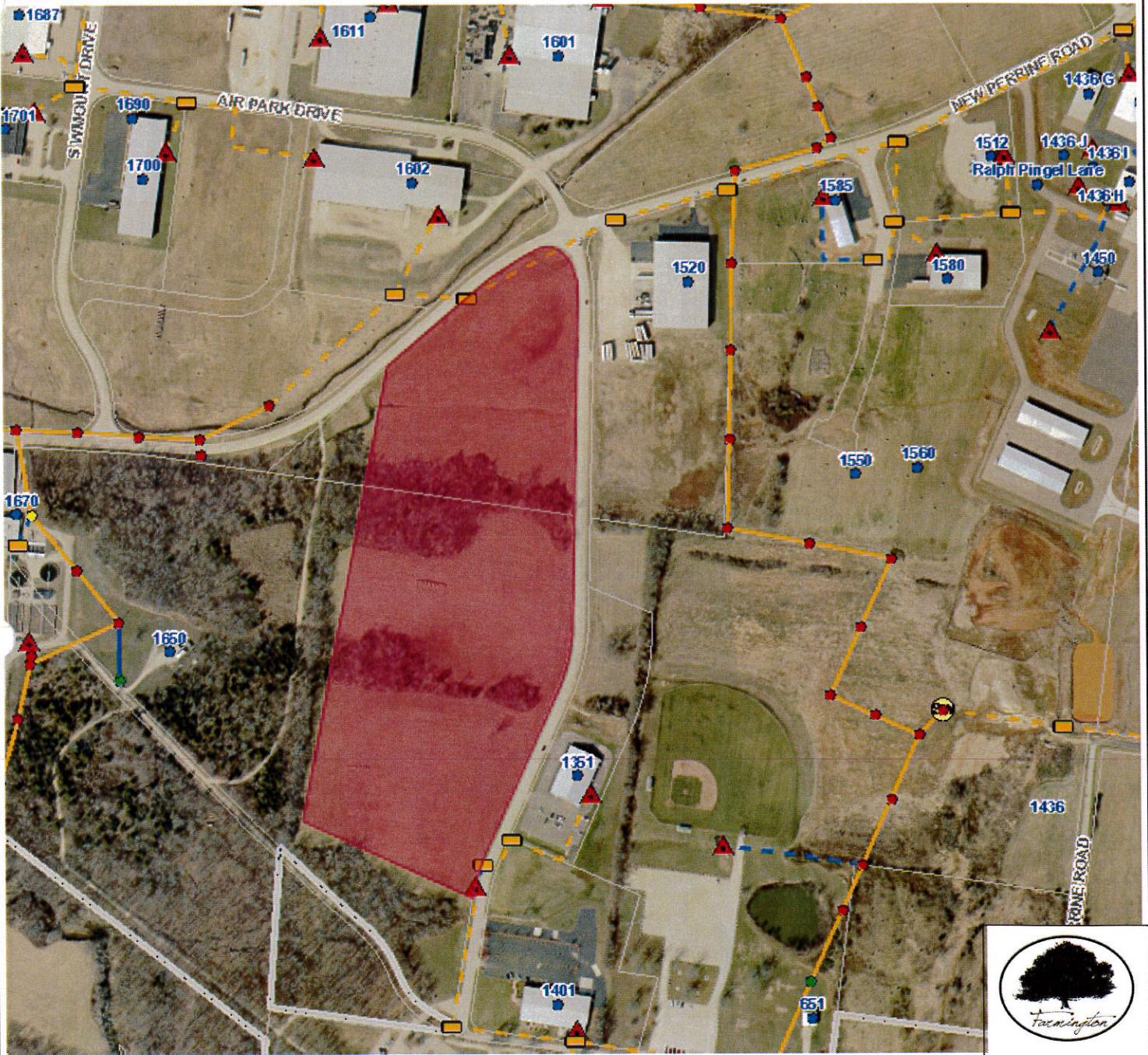
Should there be any questions regarding this information please contact me.

Sincerely,



Larry Lacy
Public Works Director
City of Farmington
573-756-0608 - Office

Farmington, MO



Legend

Address Point

- In City Limits
- Out of City Limits

Transformer

- Single Phase
- 2 Phase
- 3 Phase

■ Cabinet

■ Junction Box

▲ Pad Mount Transformer

■ Switch Gear

■ UG Primary Meter

■ Switch

— Single Phase OH

— Unknown OH

— Single Phase U

— Two Phase UG

— Three Phase U

— Secondary UG

— Unknown UG

□ Parcel

Notes

This map is a user generated static output from an Internet mapping site and is for reference only. Data layers that appear on this map may or may not be accurate, current, or otherwise reliable.

THIS MAP IS NOT TO BE USED FOR NAVIGATION