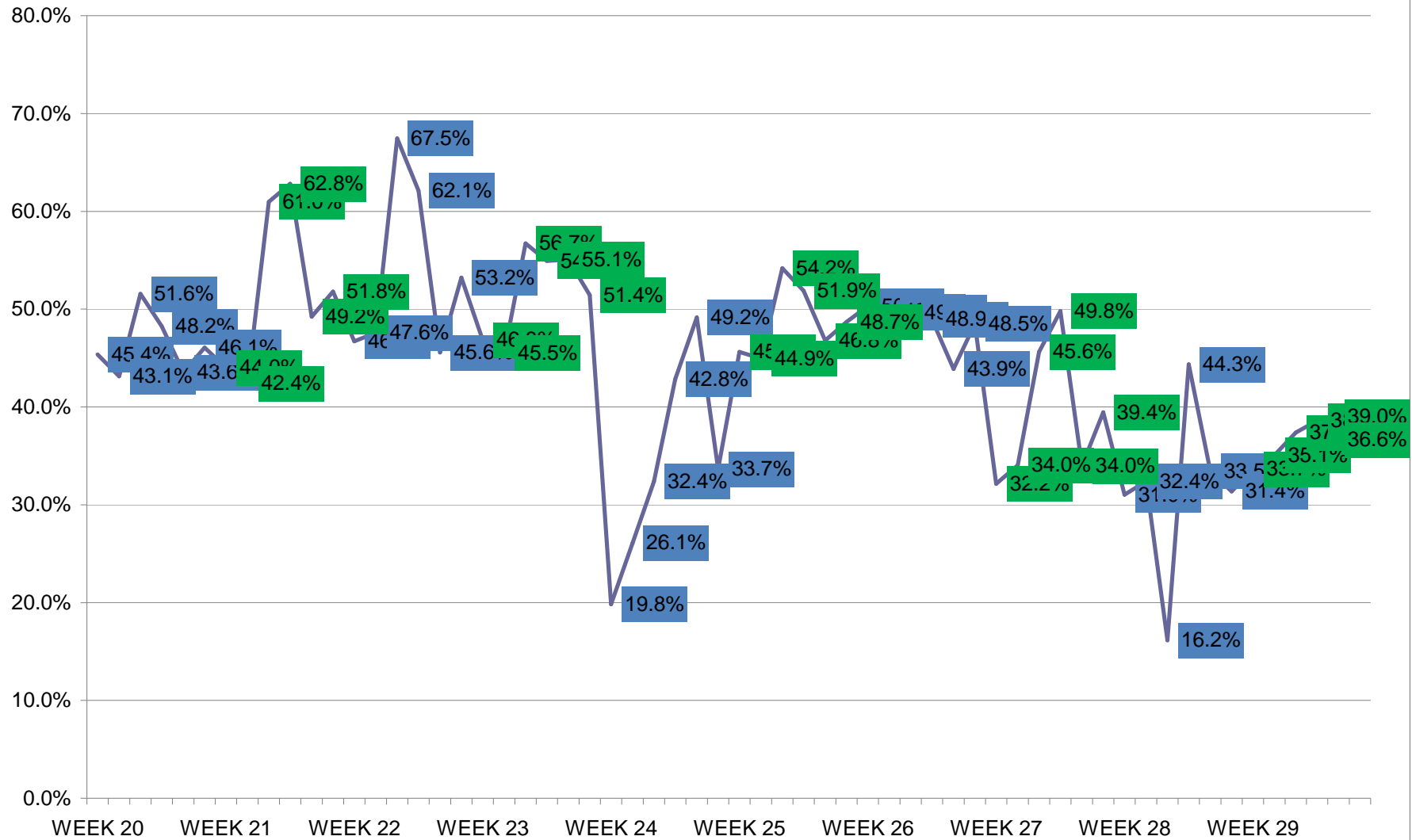
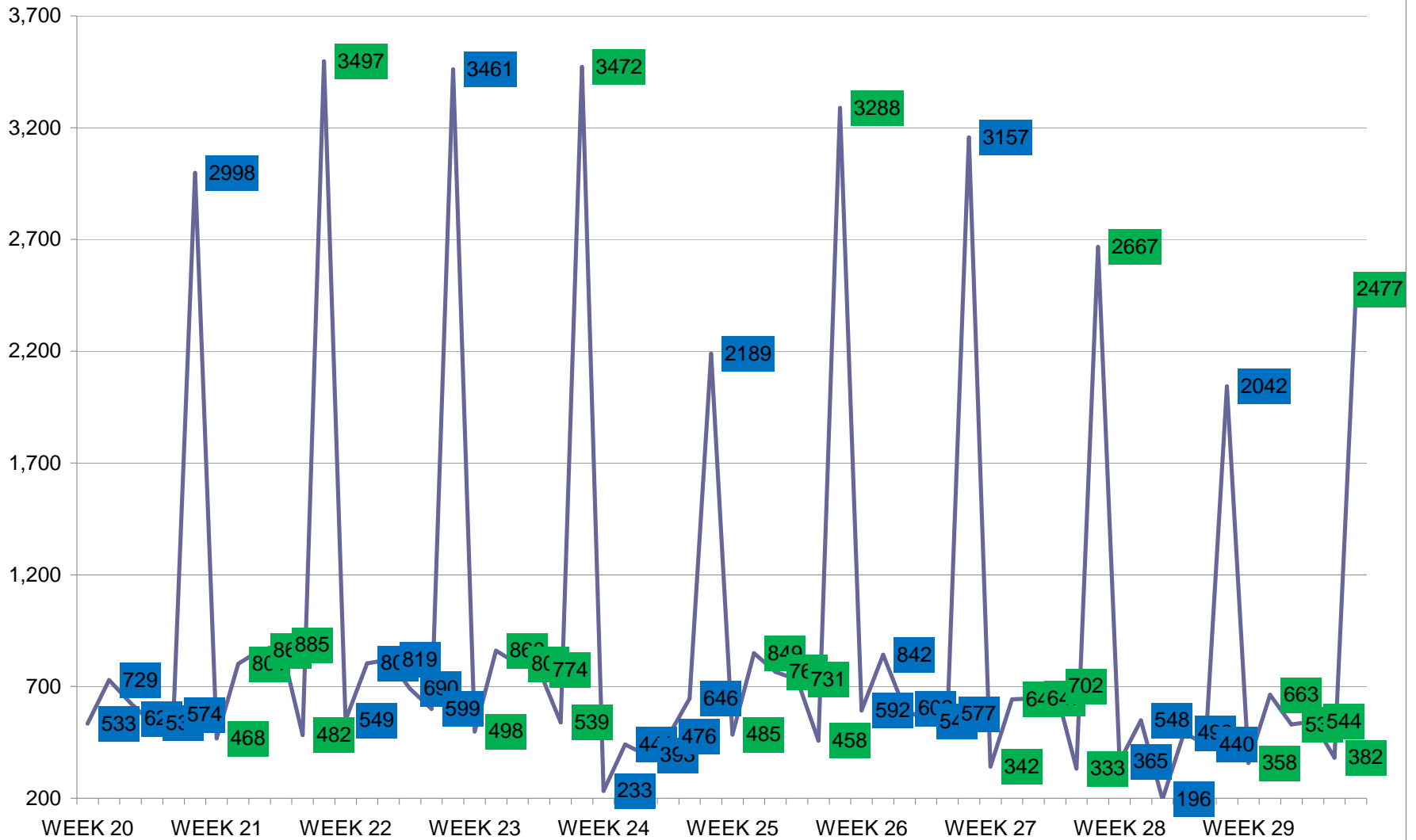


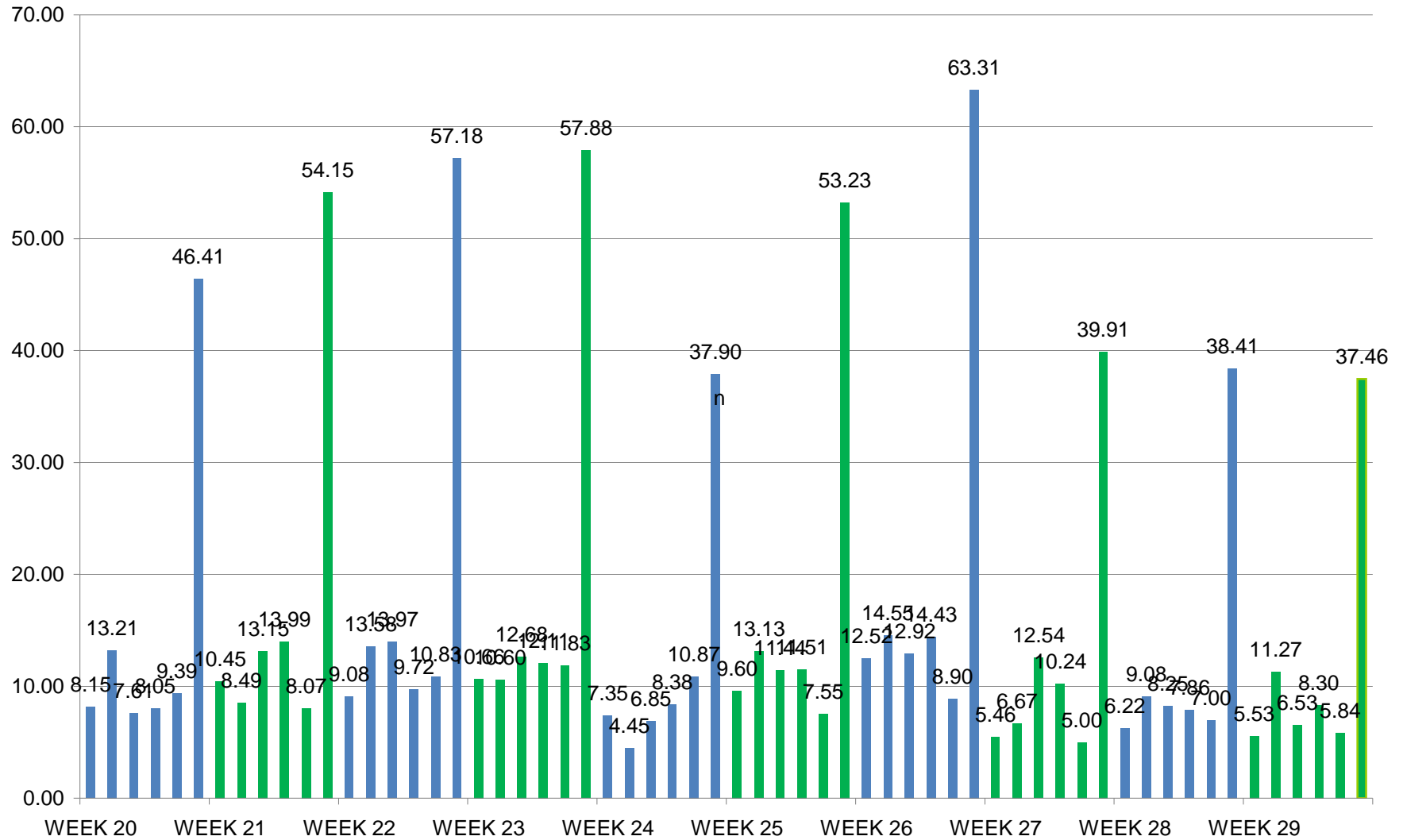
Set out rate



of Set Out



TONNAGE



Pre-RB 3% recycling rate

Date	Week		Total # of HHs	Total # of Carts	# of Set Out	Set Out Rate
7/14/08	Green	MON	1062	1067		0.0%
7/15/08	Green	TUE	1888	1938	826	43.8%
7/16/08	Green	WED	1420	1424		0.0%
7/17/08	Green	THU	1409	1421		0.0%
7/18/08	Green	FRI	986	987		0.0%
WEEK 1			6765	6837		0.0%
7/21/08	Blue	MON	1172	1175	242	20.6%
7/22/08	Blue	TUE	1689	1741	748	44.3%
7/23/08	Blue	WED	1220	1223	408	33.4%
7/24/08	Blue	THU	1119	1121	416	37.2%
7/25/08	Blue	FRI	1328	1331	323	24.3%
WEEK 2			6528	6591	2137	32.7%
7/28/08	Green	MON	1062	1067	449	42.3%
7/29/08	Green	TUE	1888	1938	785	41.6%
7/30/08	Green	WED	1420	1424	787	55.4%
7/31/08	Green	THU	1409	1421	816	57.9%
8/1/08	Green	FRI	986	987	420	42.6%
WEEK 3			6765	6837	3257	48.1%
8/4/08	Blue	MON	1172	1175	490	41.8%
8/5/08	Blue	TUE	1689	1741	806	47.7%
8/6/08	Blue	WED	1220	1223	731	59.9%
8/7/08	Blue	THU	1119	1121	391	34.9%
8/8/08	Blue	FRI	1328	1331	668	50.3%
WEEK 4			6528	6591	3086	47.3%
8/11/08	Green	MON	1062	1067	461	43.4%
8/12/08	Green	TUE	1888	1938	754	39.9%
8/13/08	Green	WED	1420	1424	794	55.9%
8/14/08	Green	THU	1409	1421	806	57.2%
8/15/08	Green	FRI	986	987	385	39.0%
WEEK 5			6765	6837	3200	47.3%
8/18/08	Blue	MON	1172	1175	571	48.7%
8/19/08	Blue	TUE	1689	1741	829	49.1%
8/20/08	Blue	WED	1220	1223	711	58.3%
8/21/08	Blue	THU	1119	1121	652	58.3%
8/22/08	Blue	FRI	1328	1331	695	52.3%
WEEK 6			6528	6591	3086	47.3%
8/25/08	Green	MON	1062	1067	487	45.9%
8/26/08	Green	TUE	1888	1938	866	45.9%
8/27/08	Green	WED	1420	1424	892	62.8%
8/28/08	Green	THU	1409	1421	841	59.7%
8/29/08	Green	FRI	986	987	459	46.6%
WEEK 7			6765	6837	3545	52.4%
9/1/08	Blue	MON	1175	1187	573	48.8%
9/2/08	Blue	TUE	1690	1753	887	52.5%
9/3/08	Blue	WED	1214	1221	804	66.2%
9/4/08	Blue	THU	1111	1123	722	65.0%
9/5/08	Blue	FRI	1318	1324	645	48.9%
WEEK 8			6508	6608	3631	55.8%
9/8/08	Green	MON	1062	1069	503	47.4%
9/9/08	Green	TUE	1889	1945	828	43.8%
9/10/08	Green	WED	1420	1432	908	63.9%

9/11/08	Green	THU	1412	1425	865	61.3%
9/12/08	Green	FRI	979	990	452	46.2%
WEEK 9			6762	6861	3556	52.6%
9/15/08	Blue	MON	1175	1187	562	47.8%
9/16/08	Blue	TUE	1690	1753	814	48.2%
9/17/08	Blue	WED	1214	1221	720	59.3%
9/18/08	Blue	THU	1111	1123	655	59.0%
9/19/08	Blue	FRI	1318	1324	674	51.1%
WEEK 10			6508	6608	3425	52.6%
9/22/08	Green	MON	1062	1069	461	43.4%
9/23/08	Green	TUE	1889	1945	716	37.9%
9/24/08	Green	WED	1420	1432	830	58.5%
9/25/08	Green	THU	1412	1425	845	59.8%
9/26/08	Green	FRI	979	990	448	45.8%
WEEK 11			6762	6861	3300	48.8%
9/29/08	Blue	MON	1175	1187	518	44.1%
9/30/08	Blue	TUE	1690	1753	861	50.9%
10/1/08	Blue	WED	1214	1221	761	62.7%
10/2/08	Blue	THU	1111	1123	678	61.0%
10/3/08	Blue	FRI	1318	1324	705	53.5%
WEEK 12			6508	6608	3523	54.1%
10/6/08	Green	MON	1062	1069	458	43.1%
10/7/08	Green	TUE	1889	1945	842	44.6%
10/8/08	Green	WED	1420	1432	898	63.2%
10/9/08	Green	THU	1412	1425	881	62.4%
10/10/08	Green	FRI	979	990	640	65.4%
WEEK 13			6762	6861	3719	55.0%
10/13/08	Blue	MON	1175	1187	542	46.1%
10/14/08	Blue	TUE	1690	1753	848	50.2%
10/15/08	Blue	WED	1214	1221	782	64.4%
10/16/08	Blue	THU	1111	1123	702	63.2%
10/17/08	Blue	FRI	1318	1324	683	51.8%
WEEK 14			6508	6608	3557	54.7%
10/20/08	Green	MON	1062	1069	470	44.3%
10/21/08	Green	TUE	1889	1945	802	42.5%
10/22/08	Green	WED	1420	1432	809	57.0%
10/23/08	Green	THU	1412	1425	808	57.2%
10/24/08	Green	FRI	979	990	441	45.0%
WEEK 15			6762	6861	3330	49.2%
10/27/08	Blue	MON	1175	1187	510	43.4%
10/28/08	Blue	TUE	1690	1753	795	47.0%
10/29/08	Blue	WED	1214	1221	704	58.0%
10/30/08	Blue	THU	1111	1123	628	56.5%
10/31/08	Blue	FRI	1318	1324	623	47.3%
WEEK 16			6508	6608	3260	50.1%
11/3/08	Green	MON	1062	1316	470	44.3%
11/4/08	Green	TUE	1889	2197	829	43.9%
11/5/08	Green	WED	1420	1680	865	60.9%
11/6/08	Green	THU	1412	1686	872	61.8%
11/7/08	Green	FRI	979	1246	534	54.5%
WEEK 17			6762	8125	3570	52.8%
11/10/08	Blue	MON	1175	1187	557	47.4%
11/11/08	Blue	TUE	1690	1753	815	48.2%
11/12/08	Blue	WED	1214	1221	808	66.6%

11/13/08	Blue	THU	1111	1123	707	63.6%
11/14/08	Blue	FRI	1318	1324	680	51.6%
WEEK 18			6508	6608	3567	54.8%
11/17/08	Green	MON	1062	1316	490	46.1%
11/18/08	Green	TUE	1889	2197	804	42.6%
11/19/08	Green	WED	1420	1680	790	55.6%
11/20/08	Green	THU	1412	1686	835	59.1%
11/21/08	Green	FRI	979	1246	660	67.4%
WEEK 19			6762	8125	3579	52.9%
11/24/08	Blue	MON	1175	1187	533	45.4%
11/25/08	Blue	TUE	1690	1753	729	43.1%
11/26/08	Blue	WED	1214	1221	626	51.6%
11/27/08	Blue	THU	1111	1123	536	48.2%
11/28/08	Blue	FRI	1318	1324	574	43.6%
WEEK 20			6508	6608	2998	46.1%
12/1/08	Green	MON	1063	1083	468	44.0%
12/2/08	Green	TUE	1889	1959	801	42.4%
12/3/08	Green	WED	1412	1442	861	61.0%
12/4/08	Green	THU	1409	1450	885	62.8%
12/5/08	Green	FRI	979	1009	482	49.2%
WEEK 21			6752	6943	3497	51.8%
12/8/08	Blue	MON	1175	1198	549	46.7%
12/9/08	Blue	TUE	1689	1771	804	47.6%
12/10/08	Blue	WED	1214	1236	819	67.5%
12/11/08	Blue	THU	1111	1132	690	62.1%
12/12/08	Blue	FRI	1314	1336	599	45.6%
WEEK 22			6503	6673	3461	53.2%
12/15/08	Green	MON	1063	1083	498	46.8%
12/16/08	Green	TUE	1889	1959	860	45.5%
12/17/08	Green	WED	1412	1442	801	56.7%
12/18/08	Green	THU	1409	1450	774	54.9%
12/19/08	Green	FRI	979	1009	539	55.1%
WEEK 23			6752	6943	3472	51.4%
12/22/08	Blue	MON	1175	1198	233	19.8%
12/23/08	Blue	TUE	1689	1771	441	26.1%
12/24/08	Blue	WED	1214	1236	393	32.4%
12/26/08	Blue	THU	1111	1132	476	42.8%
12/27/08	Blue	FRI	1314	1336	646	49.2%
WEEK 24			6503	6673	2189	33.7%
12/29/08	Green	MON	1063	1083	485	45.6%
12/30/08	Green	TUE	1889	1959	849	44.9%
12/31/08	Green	WED	1412	1442	765	54.2%
1/2/09	Green	THU	1409	1450	731	51.9%
1/3/09	Green	FRI	979	1009	458	46.8%
WEEK 25			6752	6943	3288	48.7%
1/5/09	Blue	MON	1177	1201	592	50.3%
1/6/09	Blue	TUE	1692	1776	842	49.8%
1/7/09	Blue	WED	1213	1238	602	49.6%
1/8/09	Blue	THU	1112	1134	544	48.9%
1/9/09	Blue	FRI	1315	1341	577	43.9%
WEEK 26			6508	6688	3157	48.5%
1/12/09	Green	MON	1064	1086	342	32.2%
1/13/09	Green	TUE	1890	1962	643	34.0%
1/14/09	Green	WED	1418	1448	647	45.6%

1/15/09	Green	THU	1410	1451	702	49.8%
1/16/09	Green	FRI	980	1011	333	34.0%
WEEK 27			6761	6956	2667	39.4%
1/20/09	Blue	MON	1177	1201	365	31.0%
1/21/09	Blue	TUE	1692	1776	548	32.4%
1/22/09	Blue	WED	1213	1238	196	16.2%
1/23/09	Blue	THU	1112	1134	493	44.3%
1/24/09	Blue	FRI	1315	1341	440	33.5%
WEEK 28			6508	6688	2042	31.4%
1/26/09	Green	MON	1064	1086	358	33.7%
1/27/09	Green	TUE	1890	1962	663	35.1%
1/28/09	Green	WED	1418	1448	530	37.4%
1/29/09	Green	THU	1410	1451	544	38.6%
1/30/09	Green	FRI	980	1011	382	39.0%
WEEK 29			6761	6956	2477	36.6%
12/22/08	Blue	MON	1175	1187		0.0%
12/23/08	Blue	TUE	1690	1753		0.0%
12/24/08	Blue	WED	1214	1221		0.0%
12/25/08	Blue	THU	1111	1123		0.0%
12/26/08	Blue	FRI	1318	1324		0.0%
WEEK 22			6508	6608	0	0.0%

setout average lb	Average lb / HH	Tonnage	Ave. Ton	MEMO
#DIV/0!	4.73	2.51	16.27	TRUCK DOWN
24.33	10.65	10.05	16.27	
#DIV/0!	7.89	5.60	16.27	TRUCK DOWN
#DIV/0!	11.95	8.42	16.27	TRUCK DOWN
#DIV/0!	9.25	4.56	16.27	TRUCK DOWN
#DIV/0!	9.21	31.14		
41.40	8.55	5.01	16.27	
19.71	8.73	7.37	16.27	
37.79	12.64	7.71	16.27	
35.43	13.17	7.37	16.27	
35.67	8.67	5.76	16.27	
31.09	10.18	33.22		
36.21	15.31	8.13	16.27	
22.27	9.26	8.74	16.27	
21.40	11.86	8.42	16.27	
20.32	11.77	8.29	16.27	
50.67	21.58	10.64	16.27	
27.15	13.07	44.22		
38.53	16.11	9.44	16.27	
28.39	13.55	11.44	16.27	
30.12	18.05	11.01	16.27	
47.98	16.76	9.38	16.27	
32.49	16.34	10.85	16.27	
33.78	15.97	52.12		
30.15	13.09	6.95	16.27	
27.69	11.06	10.44	16.27	
29.57	16.54	11.74	16.27	
29.58	16.92	11.92		
34.13	13.33	6.57		
29.76	14.08	47.62		
32.33	15.75	9.23	16.27	
29.34	14.40	12.16	16.27	
29.51	17.20	10.49	16.27	
29.72	17.32	9.69	16.27	
30.39	15.90	10.56	16.27	
33.78	15.97	52.13		
30.43	13.95	7.41	16.27	
28.94	13.27	12.53	16.27	
22.80	14.32	10.17	16.27	
35.34	21.09	14.86		
31.81	14.81	7.30		
29.49	15.45	52.27		
31.80	15.51	9.11	16.27	
29.81	15.64	13.22	16.27	
31.17	20.64	12.53	16.27	
28.42	18.47	10.26	16.27	
36.19	17.71	11.67	16.27	
31.28	17.45	56.79		
31.85	15.08	8.01	16.27	
17.20	7.54	7.12	16.27	
40.64	25.99	18.45	16.27	

16.49	10.10	7.13	
65.49	30.23	14.80	
31.22	16.42	55.51	
31.81	15.22	8.94	16.27
16.44	7.92	6.69	16.27
44.64	26.47	16.07	16.27
23.60	13.92	7.73	16.27
28.46	14.55	9.59	16.27
28.62	15.06	49.02	
30.15	13.09	6.95	16.27
21.34	8.09	7.64	16.27
40.55	23.70	16.83	16.27
19.48	11.66	8.23	
52.77	24.15	11.82	
31.19	15.22	51.47	
33.71	14.86	8.73	16.27
26.41	13.46	11.37	16.27
35.93	22.52	13.67	16.27
25.75	15.72	8.73	16.27
33.25	17.78	11.72	16.27
30.78	16.66	54.22	
30.00	12.94	6.87	16.27
25.77	11.49	10.85	16.27
30.76	19.45	13.81	16.27
28.44	17.75	12.53	
22.38	14.63	7.16	
27.55	15.15	51.22	
33.76	15.57	9.15	16.27
31.16	15.63	13.21	16.27
25.09	16.16	9.81	16.27
31.17	19.69	10.94	16.27
36.72	19.03	12.54	16.27
31.29	17.10	55.65	
30.13	13.33	7.08	16.27
15.26	6.48	6.12	16.27
40.32	22.97	16.31	16.27
29.03	16.61	11.73	
30.66	13.81	6.76	
28.83	14.20	48.00	
28.16	12.22	7.18	16.27
16.25	7.64	6.46	16.27
41.99	24.35	14.78	16.27
26.82	15.16	8.42	16.27
27.96	13.22	8.71	16.27
27.94	14.00	45.55	
30.34	13.43	7.13	16.27
16.07	7.05	6.66	16.27
41.02	24.99	17.74	16.27
29.31	18.10	12.78	
24.72	13.48	6.60	
28.52	15.06	50.91	
36.16	10.07	10.07	16.27
33.86	13.80	13.80	16.27
30.01	12.12	12.12	16.27

30.82	10.90	10.90	16.27
31.66	10.77	10.77	16.27
32.32	17.72	57.65	
31.92	14.73	7.82	16.27
31.01	13.20	12.47	16.27
26.85	14.94	10.61	16.27
28.55	16.88	11.92	
19.94	13.44	6.58	
27.60	14.61	49.39	
30.58	13.87	8.15	16.27
36.24	15.63	13.21	16.27
24.32	12.54	7.61	16.27
30.04	14.49	8.05	16.27
32.72	14.25	9.39	16.27
30.96	14.26	46.41	
44.66	19.66	10.45	16.27
21.20	8.99	8.49	16.27
30.55	18.63	13.15	16.27
31.62	19.86	13.99	
33.49	16.49	8.07	
30.97	16.04	54.15	
33.08	15.46	9.08	16.27
33.78	16.08	13.58	16.27
34.11	23.01	13.97	16.27
28.17	17.50	9.72	16.27
36.16	16.48	10.83	16.27
33.04	17.59	57.18	
42.82	20.06	10.66	16.27
24.65	11.22	10.60	16.27
31.66	17.96	12.68	16.27
31.29	17.19	12.11	
43.90	24.17	11.83	
33.34	17.14	57.88	
63.09	12.51	7.35	16.27
20.18	5.27	4.45	16.27
34.86	11.29	6.85	16.27
35.21	15.09	8.38	16.27
33.65	16.54	10.87	16.27
34.63	11.66	37.90	
39.59	18.06	9.60	16.27
30.93	13.90	13.13	16.27
29.91	16.20	11.44	16.27
31.49	16.34	11.51	
32.97	15.42	7.55	
32.38	15.77	53.23	
42.28	21.27	12.52	16.27
34.55	17.20	14.55	16.27
42.92	21.31	12.92	16.27
53.05	25.96	14.43	16.27
30.85	13.54	8.90	16.27
40.11	19.46	63.31	
31.93	10.27	5.46	16.27
20.75	7.06	6.67	16.27
38.76	17.69	12.54	16.27

29.17	14.53	10.24	
30.03	10.21	5.00	
29.93	11.81	39.91	
34.08	10.57	6.22	16.27
33.14	10.73	9.08	16.27
84.18	13.61	8.25	16.27
31.89	14.14	7.86	16.27
31.82	10.65	7.00	16.27
37.62	11.80	38.41	
30.89	10.40	5.53	16.27
33.98	11.92	11.27	16.27
24.62	9.21	6.53	16.27
30.51	11.78	8.30	
30.58	11.92	5.84	
30.25	11.08	37.46	
#DIV/0!	0.00		16.27
#DIV/0!	0.00		16.27
#DIV/0!	0.00		16.27
#DIV/0!	0.00		16.27
#DIV/0!	0.00		16.27
#DIV/0!	0.00	0.00	

MASSCR