

**Sec. 18-143. Odd and even all night parking.**

(a) Whenever the chief of police declares that a parking ban is in effect as a result of weather conditions that threaten to constitute a traffic hazard, motor vehicles shall only park on the odd-numbered side of the street in odd-numbered years and on the even-numbered side in the even-numbered years.

(b) Notification to the general public of the parking ban and its termination shall be given by the chief of police in such a manner as he may prescribe and announce.

(c) This section shall not apply to any street on which parking is now prohibited on one or both sides of a street, at any time, and shall not apply to those streets designated as snow emergency arteries in the city, as defined in chapter 18, section 18-144 of the ordinances of the city.

212

(d) Any vehicle found to be in violation of this section shall be subject to the penalties as provided by section 18-146, parking fines, and subject to towing as provided by division 2, section 18-161 through section 18-166.

(e) This section shall be in effect from November 1st through March 31st.

(f) The purpose of the section is to restrict parking on streets in the city during the winter months for snow removal and to insure unobstructed access for emergency vehicles and for the safety and convenience of the general public.

**Sec. 18-144. Emergency or Weather Parking Limitations.**

(a) Whenever a Federal, State, or City emergency situation exists, and whenever impending weather conditions threaten to constitute a traffic hazard impairing transportation, the movement of food and fuel supplies, medical care, fire, health and police protection, and other vital facilities of the city, the chief of police shall announce such emergency, then, any and all of the following parking prohibitions shall become effective at the time designated.

(b) No driver shall stop, stand or park any vehicle within the limits of certain traffic arteries or parts thereof, provided that this section shall not apply to passenger vehicles stopped temporarily during the actual receiving or discharging passengers nor to commercial vehicles stopped temporarily during the actual loading or unloading of materials. The schedule of the streets designated as emergency arteries is on file in the city clerk's office.

**City of Everett  
Emergencies Arteries**

Alpine Ave	Both Sides
Bell Rock Street	Entire Length
Broadway	from Boston line to Malden Line
Bryant Street	Entire Length
Bucknam Street	from Norwood Street to Belmont Street
Chelsea Street	from Everett Square to Everett Avenue
Elm Street	from Ferry Street to Revere Line
Ferry Street	from Malden Line to Chelsea Street
Fuller Street	Entire length
Garland Street	Easterly Side, from Belle View Avenue to Somerset Street
Hancock Street	from Broadway to Malden Line
High Street	from Broadway to Ferry Street
Lawrence Street	Entire Length
Lynn Street	Entire Length
Main Street	Sweetser Circle to Malden Line
Nichols Street	from Ferry Street to Chelsea Line
Norwood Street	from Bucknam Street to Everett Square
Second Street	Entire Length
Tileston Street	Entire Length
Tremont Street	Entire Length
Union Street	Entire Length
Waverly Street	easterly Side, from Hancock Street to Warren Street



**Everett Emergency Management**



Mayor John Hanlon  
Chief David Butler  
Chief Steven A. Mazzeo



**Emergency Dial 911**

September 2007



**EVERETT  
POLICE  
DEPARTMENT**

**City of Everett**

**Parking Restriction  
Notification System  
(PRNS)**



**EVERETT  
FIRE  
DEPARTMENT**



## Everett Parking Restriction Notification System (PRNS)

The City of Everett has installed 26 blue strobe lights around the city to notify the public when parking restrictions are in effect. These lights will be activated under two conditions:

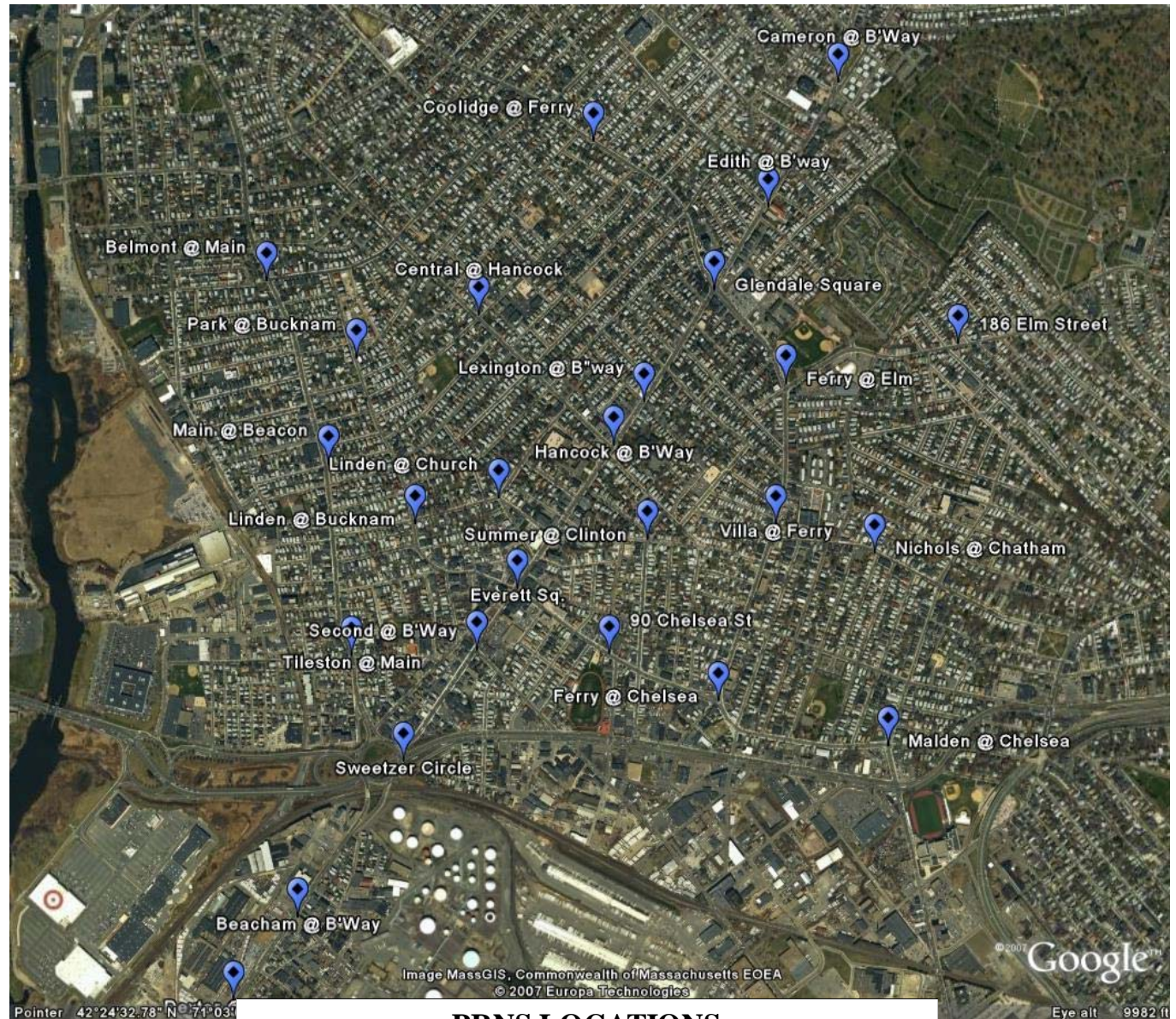
### Extreme Weather

During an extreme weather event (snow storm, flooding, etc) activation of these lights indicate that there is no parking on the Emergency Arteries (see back panel) and restricted parking on all other city streets (odd side parking on odd numbered years or even side parking on even years).

### Evacuation Route Established.

In the event of an incident requiring the establishment of an evacuation route these lights may be activated along Broadway and Main Streets. ***The activation of these lights, in and of itself, does not mean that you must evacuate your home***, only that there is no parking along Broadway and Main Streets. In the event of the activation of these lights listen to your local radio and television stations for more information regarding the need for evacuation of your home.

For more information during the activation of these lights contact the Everett Communications Center at 617-387-1212 or 617-387-7443



## PRNS LOCATIONS

Broadway @ Dexter  
 Broadway @ Beacham  
 Sweetser Circle  
 Broadway @ Second  
 Everett Square  
 Broadway @ Hancock  
 Broadway @ Lexington  
 Glendale Square  
 Broadway @ Edith

Broadway @ Cameron  
 Main @ Tileston  
 Main @ Beacon  
 Main @ Belmont  
 90 Chelsea St  
 Chelsea @ Ferry  
 Chelsea @ Malden  
 Ferry @ Villa  
 Ferry @ Elm

Ferry @ Coolidge  
 186 Elm St  
 Central @ Hancock  
 Park @ Bucknam  
 Linden @ Bucknam  
 Linden @ Church  
 Summer @ Clinton  
 Nichols @ Chatham