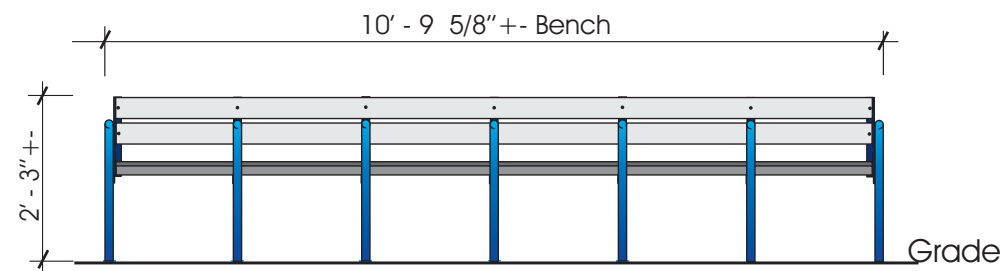
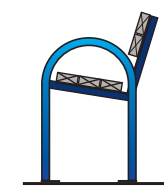


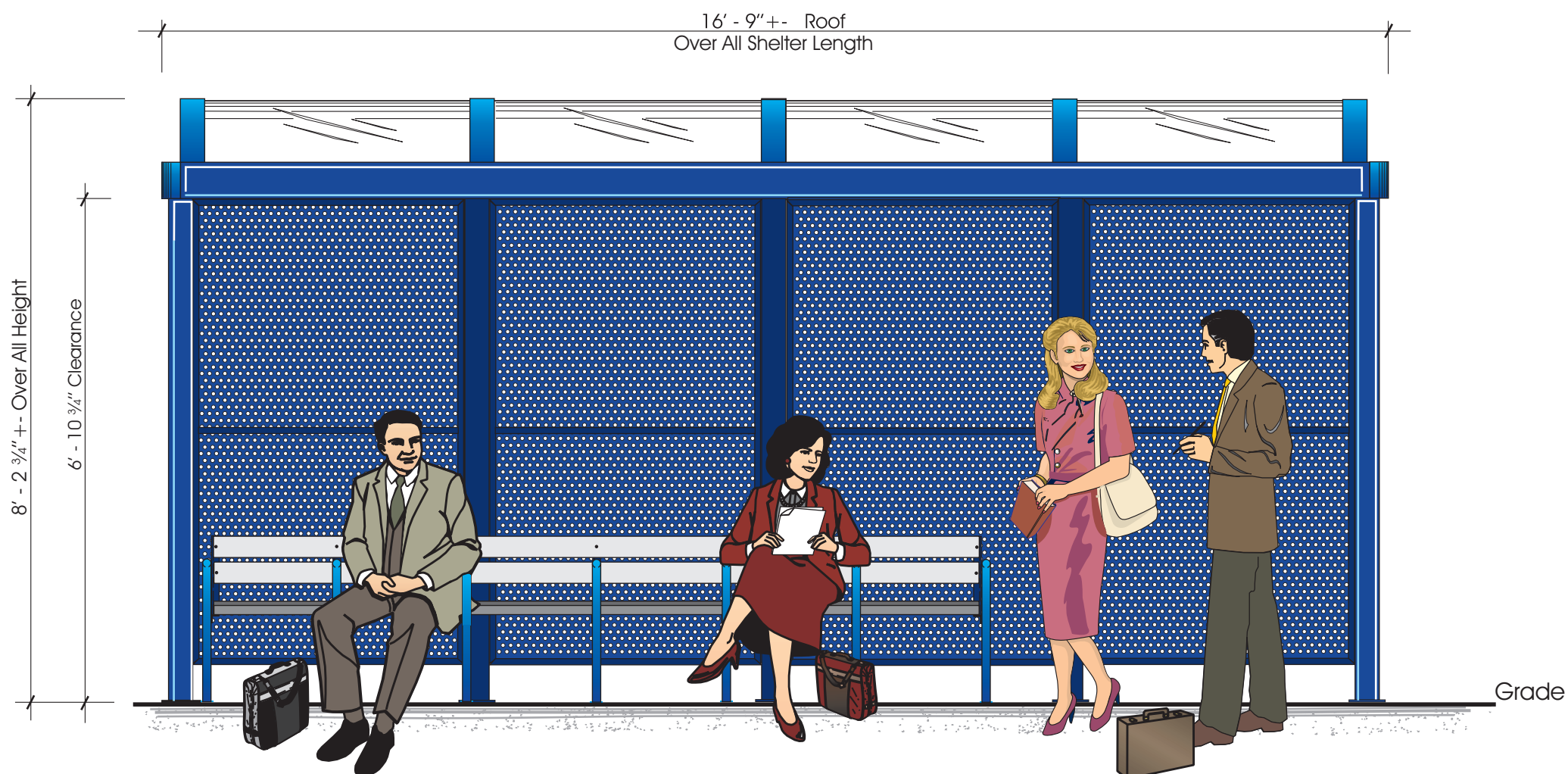
Plan View
1/4" = 1'-0"



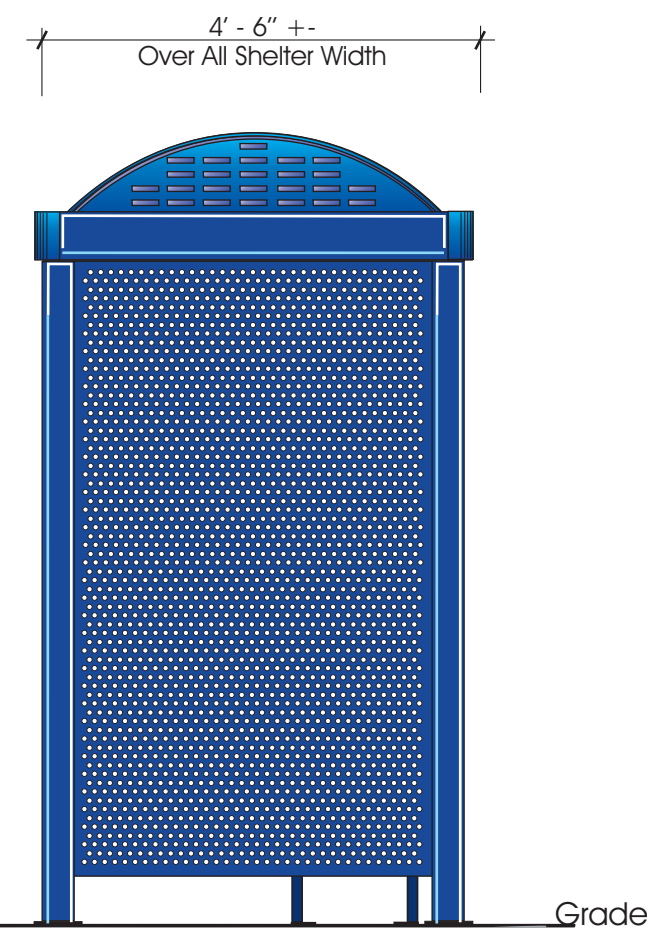
Front View of Bench
Rolled pipe frame with composite material seating.



End View
3/8" = 1'-0"



Front Elevation: Type D
1/2" = 1'-0"
Shelters are aluminum and steel construction. Components are powder coated. Roof panels are White Translucent Lexan. Shelters are available with optional lighting.



End View:
1/2" = 1'-0"

Neon Electric Corporation



Designers • Fabricators • Erectors
Architectural Metal Products
1122 Lauder Road Houston, Texas 77039
(281) 987-1144 fax (281) 987-9443

Job Name: DART Shelter Project
Salesperson: Hank Hink
Scale: Shown Date: 5-14-07
Sheet 1 of 1

Installation Address: Various
Work Order No.
Artist Jgonzalez
Drawing No. 13188-GXD

Revisions		
No.	Date	By
1		
2		
3		
4		

DART Shelter Type D
4' - 6" +/- x 16' - 9" +/-
Barrel Vault Roof Shelter