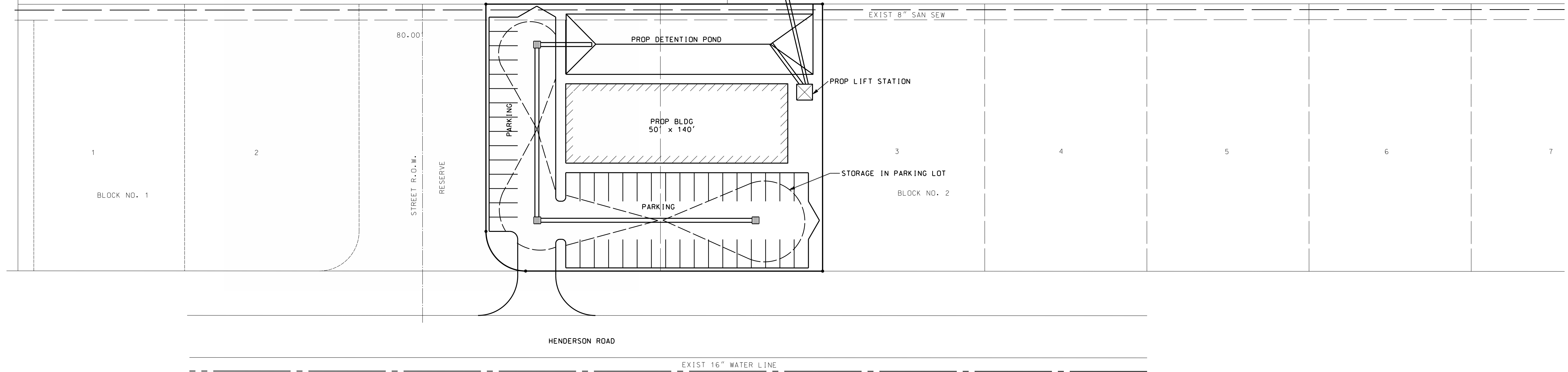


ANGLETON COMMERCIAL SUBDIVISION NO. 3
PART OF TRACT 5 RESIDUAL
50.6295 ACRES

**Preliminary Plan for Drainage and Detention
Office Development - Lot 1 & 2 of Block 2 of
North Angleton Commercial Office Park - Phase I**

Total Area (Lots 1 and 2)	0.8167 ac.	35,375 s.f.
85% Impervious Added	0.6942 ac.	30,240 s.f.
0.7 c.f./s.f. of Impervious Area Req'd. for Det.	0.4859 ac.-ft.	21,170 c.f.
Det. Volume in Det. Pond	0.3200 ac.-ft.	13,940 c.f.
Det. Volume in Parking Area	0.0551 ac.-ft.	2,400 c.f.
Det. Volume in Storm Sewer (2-42" x 280 L.f.)	0.1237 ac.-ft.	5,390 c.f.
Det. Volume Provided - Total	0.4988 ac.-ft.	21,730 c.f.

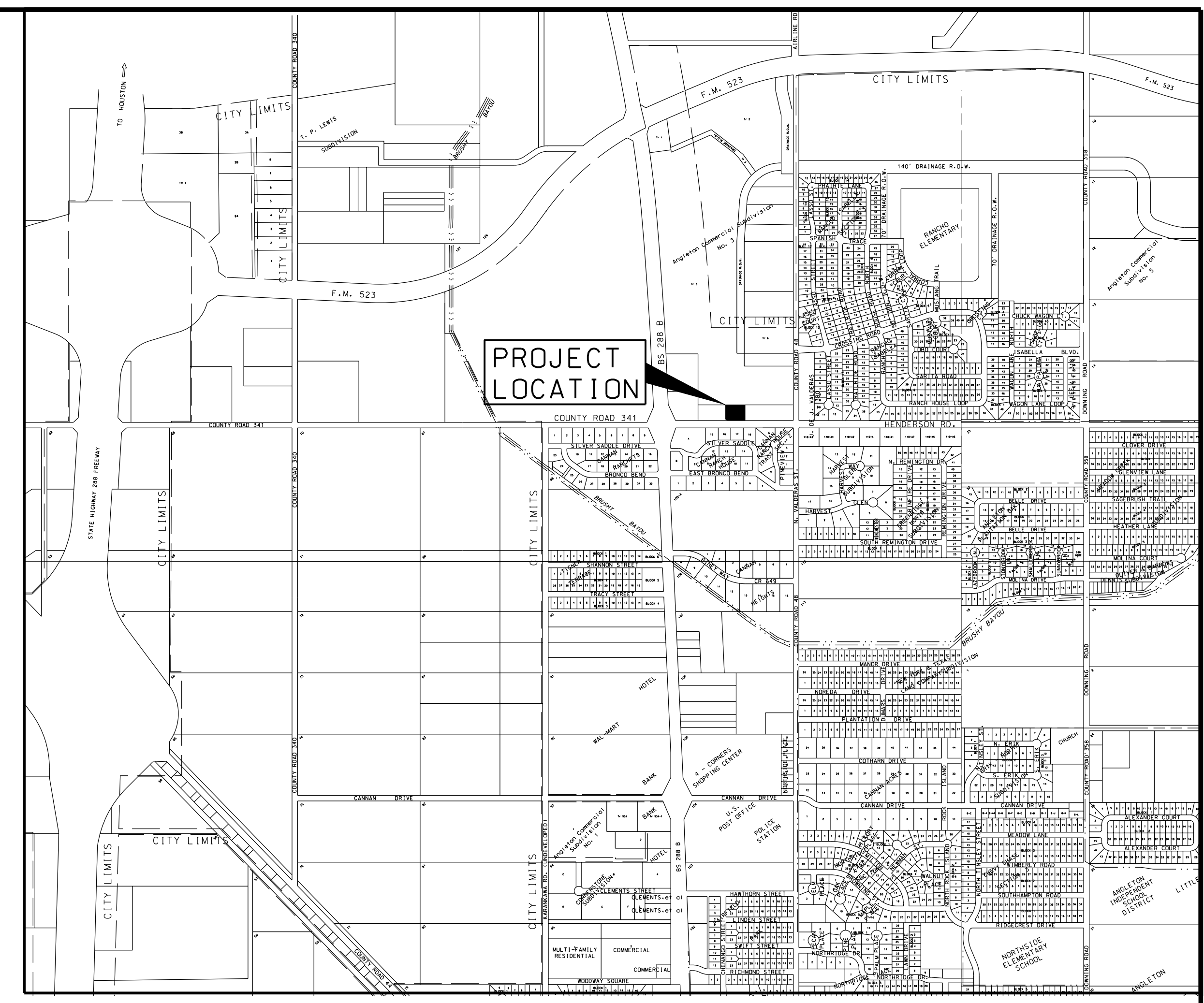
N 89°58'43"E 447.23'



ANGLETON COMMERCIAL SUBDIVISION NO. 3

A
0.4469
AC.

40' DRAINAGE R.O.W.



VACINITY MAP

N 89°58'43"E 578.93'

VOL. 21, PG. 223-224 P.R.B.C.

NO.	DATE	DESCRIPTION	APPROVED
		REVISIONS	

DESIGNED	DBR
DRAWN	MEP
CHECKED	
DATE	

BAKER & LAWSON, INC.
ENGINEERS • PLANNERS • SURVEYORS
300 E. CEDAR ST., ANGLETON, TEXAS 77515

TEXAS INTERNATIONAL EQUIPMENT

SCALE:

PLAN: 1" = 30'

PROFILE: _____

HORIZONTAL: _____

VERTICAL: _____

MARTIAL ARTS TAE KWON DO

GRADING, PAVING, DRAINAGE & UTILITIES

SHEET 1 OF 1 SHEETS

SITE GRADING & DETENTION POND

PROJECT NO. 10023 10023_SITE.dgn 2