

Amberley Village NEWS

WINTER 2009

Featured at Hamilton County Police Museum

By Chief Jack Monahan



Amberley Police/Fire Chief Jack Monahan (left) selects artifacts with Cincinnati Police Det. Richard Gross (center) and Retired FBI Agent Dave Lichtenfeld (right) in the Village's History Room.

Artifacts from the Amberley Village Police Department are on display throughout the month of February at the Hamilton County Police Museum, located at 959 West Eighth Street. Items on exhibit include badges, equipment and photographs showing a progression from the inception of the department in 1941 through the present day.

The exhibit is available during regular Museum hours: Tues., Thurs. and Sat. from 10 a.m. to 4 p.m. Evening tours also can be arranged for residents. If you are interested or have any questions, contact Amberley Police/Fire Chief Jack Monahan at jhmonahan@amberleyvillage.org or 531-2040. ☑

Growing Green

A free series on Green Landscaping practices is available to Amberley residents through a partnership with Montgomery and Blue Ash. You'll learn from local landscaping and plant experts how you can take better care of your yard while also benefitting the environment.

Five free 90-minute presentations will be held at Terwilliger Lodge in Montgomery on Thursday evenings, 6:30-8:00 p.m. beginning March 5.

March 5

Rain Gardens and Contour Planting

March 12

Soil Testing and Sustainable Plants for the Landscape

March 19

Rain Barrels and Water Harvesting

March 26

Composting and Mulching

April 2

Lawn Care & Integrated Pest Management

The grand finale will be the Rain Garden Design Training session on Saturday April 4, from 9 am-3 pm at Terwilliger Lodge conducted by the Mill Creek Watershed Council. Attendance is limited to the first 25 people. A \$25 fee includes beverages, lunch and training materials. To register, visit millcreekwatershed.org. Attend one or all sessions and have the greenest yard in the neighborhood. ☑



IN THIS ISSUE

The Mayor's Desk 2

In The News 3

Village News 4

Resident Donates Precision Level 4

Giving Back 4

Commemorative Bricks at Flag Plaza..... 5

Amberley Green Update 5

Gateway Project Approved 6

Settling in at the New Pleasant Ridge Montessori School 7

Plan Ahead: Emergency Preparedness 8

Tonado Safety 8

Tax Tips 9

Arbor Day/Green Up..... 9

Winter Yard Work 9

Take Note: Permits and Community Room..... 10

Council Actions 10

Project Childsafe: Firearm Safety Kits.... 11

Fall Photo Winner 11

Community Calendar 12

THE MAYOR’S DESK

Citizen Commitment

By Chuck Kamine, Mayor



Last August I attended the opening of a sculpture installation called Floodwall commemorating the third anniversary

of Hurricane Katrina by an internationally celebrated artist. The exhibit was interesting, but more impressive was its location, the Clifton Cultural Arts Center (CCAC), and the story behind it. In 2004 the Cincinnati Public Schools decided to close the old Clifton school building in the gaslight district and build a new building on the adjoining site for the new Fairview German Language magnet school. The community members wrestled over what to do on this land. A local developer tried mightily to block CPS from building a school in the neighborhood, and instead turn the site over to him for development. Eventually the community decided on a cultural arts center to bolster the new school and to preserve the architecturally significant school building.

A dedicated band of community volunteers put together a business plan and formed a nonprofit organization. They convinced CPS of their viability and secured the use of the old building. Volunteer architects, engineers, lawyers and others developed a renovation plan. They got a grant that led to many other donations from individuals and

organizations to begin renovations including a \$250,000 capital improvement grant from the State of Ohio. The CCAC now has 3 tenants committed to using the building with classes and exhibitions. All of this effort has attracted over a million dollars in donations to help finish the renovations and insure future maintenance. Clifton rescued this asset in the heart of their community and created a campus that works in partnership with the local elementary school and the adjacent recreation center. The CCAC webpage quotes Margaret Mead: “Never doubt that a small group of thoughtful, committed citizens can change the world. Indeed, it’s the only thing that ever has.”

This story reminds me of all the Amberley citizens who volunteer their time and energy for the Village on the Long Range Planning Committee, Beautification Committee, Stormwater Advisory Committee, Ice Cream Social Committee, Planning Commission, Tax Board of Review and Property Maintenance Code Board of Appeals. To all of these volunteers and the many others who donate their time and resources to the Village, I thank you for your contributions. Just as the new president, in his inaugural address, called upon the nation to step up in service to our country, I am confident that a group of thoughtful, committed volunteers and donors can help us reach our fullest potential in the Village. 🍏

IN THE NEWS

If you have news to share about Amberley residents, please send it to Nicole Browder at nbrowder@AmberleyVillage.org (with a photo if possible).

Student News



Patrick Driscoll of Arborcrest Drive has been awarded his Eagle Scout

status! You may remember that Patrick volunteered to install the Amberley Village address signs as part of his Eagle Scout project last year. Good work, Patrick!

Award Winners

Mel Fisher

is the fourth recipient of the Carl H. Lindner Award for Entrepreneurial and Civic Spirit. Mr. Fisher has formed several successful



businesses since the 1960's and at 78 years of age continues to be driven to build, lead and finance such ventures. Mr. Fisher has been a major philanthropic leader with one of his major charitable efforts being leader of a \$15 million effort to build the first Jewish house of worship on the campus of the U.S. Naval Academy in Annapolis, MD.

Temple Sholom, located at the corner of Ridge Road and Longmeadow, has replaced 100 incandescent and halogen lights with energy efficient Compact Florescent

Lightbulbs (CFL) with the assistance of an Energy Incentive Grant from Duke Energy. The wattage use was reduced from 14,000 watts to 3,000 watts! Way to go green!

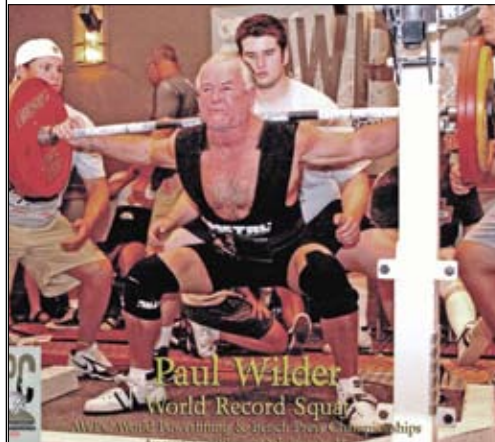


Philip Moore

received the Fibbe Award from the Cincinnati Association for the Blind and Visually Impaired (CABVI) for his work as a Radio Reading Service volunteer the past four years. "Phil is always enthusiastic when he comes in to run the audio board and record volunteers. He is always ready to step up to the plate to pinch-read when the regular reader of a program cannot, and he is in the process of learning more editing procedures on our computers," said Mark DeWitt, Broadcast Manager. A resident of Arborcrest, Moore was a teacher for 19 years before taking a disability retirement.

At age 68, Amberley resident **Paul Wilder** holds 30 powerlifting records, including a world record for the squat that he set last August 3rd at the World Powerlifting Congress in Chicago.

Wilder lifted 445 lbs. to set the record, one of six world records he currently holds. At the same meet, he bench-pressed 330 lbs. and deadlifted 480 lbs, competing with powerlifters



from eight countries. He currently works out at a gym four days a week, always attended by a spotter. "I try to find men who are half my age and twice my size to spot for me," he joked.

Thanks!

Thank you to **Rabbi Sigma F. Coran, Joanne Gerson and the 30 volunteers from Rockdale** for helping to plant the remaining 175 plants in the Village rain garden on October 26, 2008, as a Mitzvah Day project. Diantha 'D' Decker of the Millcreek Watershed Council of Communities helped site the Indian grass, Bergamont-Monarda, Wild Senna, Tussock Sedge, Switch Grass, Foxglove beard tongue, Culver's root, Swamp milkweed, Swamp rose mallow (hibiscus moscheutos), and Little joe pye plants which are native to this region. They will help filter pollutants and reduce storm water run-off into Amberley.

In Memory

Lt. Guy Bloomfield, a retired Amberley Village officer, passed away on October 22, 2008. Lt.



Bloomfield served the Village from April 9, 1960 to April 9, 1988. He was promoted to the rank of Lieutenant on May 1, 1974 and had a successful career with the Public Safety Department. He is survived by his three children, Kris, Karla and Keith. ☑

Attention High School Graduating Class of 2009! If you would like to feature your graduating son or daughter in the Spring newsletter, please send your information to nbrowder@amberleyvillage.org by April 1.



Resident Donates Precision Level

By Tracy McMullen

Photo courtesy of Tracy McMullen



Stanley Cohen, a professional engineer and long-time resident of Royaloak Court, has donated a 60-year-old precision dumpy level to the Village for use by the Public Works

Department. Dumpy levels are used for establishing precise horizontal elevations. They were introduced by William Gravatt, an English civil engineer, in 1848.

Dumpy levels combine a telescope with a spirit bubble

tube mounted on a base with four leveling screws. The name 'dumpy' refers to the instrument's short focal length, which makes it much easier to use than a design requiring a longer

telescope.

Steve Rasfeld, Amberley's Director of Public Works, said his department is deeply grateful for Cohen's donation. He said the level will be a great asset for storm drain installations, landscaping projects, and various maintenance activities undertaken by the Village.

Cohen's level was manufactured by Keuffel and Esser Instruments. It is 18 inches long with a 32-power telescope. The level was field-checked by Cohen and Rasfeld and found to be accurate to within 1/100th of a foot in 100 ft. Cohen said that a comparable new level would sell for about \$3,500.

"The level is in excellent condition, as is the aluminum tripod I included with it," Cohen said. "With reasonable care, it will give the Village good service for another 40 years." 📷

Giving Back

By Tracy McMullen

Many residents naturally want to give back to the community in appreciation for the many benefits of living in Amberley. Besides volunteering time, you also can contribute financial support directly to the programs and services that make

Amberley Village special. Contributions help obtain "wish list" items that may not be included in the annual budget.

The Village currently has several established funds that can receive tax-deductible donations. Contributions can be made at any time, and donors

can designate that their monies go to a particular area, said Margie Crowley, Village Financial Administrator. (See chart.)

The process is simple; donors write a check to "Amberley Village" and enter the name of the recipient fund on the check's memo blank. Mail the check to Village Hall, 7149 Ridge Rd., 45237. The donation will be acknowledged and deposited in the correct account.

Crowley noted that donations to any of the funds would supplement the amount budgeted to the designated department or committee; donations would not be used as a substitute for budgetary allocations. For further information, contact Margie Crowley at MCrowley@amberleyvillage.org or 531-8675. 📷

Fund	To Benefit
Beautification Committee	Gateway Project (see article in this issue) Village Hall front garden
Amberley Green Enhancement Fund	Improvement and maintenance of the former Crest Hills site
Public Safety	Equipment, training, services
Maintenance Department	Equipment, training, services
Life Squad/Paramedics	Offset cost of services
Village Administration, Mayor, Village Council	Discretionary funds for special projects



Flag Plaza Bricks Commemorate Special People, Events

By Tracy McMullen

Amberley residents can permanently commemorate the special people and events in their lives with an engraved brick in the Village's flag plaza, which is located in front of Village Hall. Names or other wording are professionally engraved on the brick, which is then permanently set in the plaza.

Over the past eight years, whimsical phrases, family names, and memorials to deceased loved ones have been engraved on many of the bricks in the plaza. Many are still available for purchase, at \$90 apiece. Funds raised through the project are used to maintain the landscaping and appearance of the plaza, and for other Village projects.

Order forms are available from the Village office or downloaded from the Village website, AmberleyVillage.org. Each brick can be engraved with up to three lines of thirteen characters or spaces. For more information, contact the office at 531-8675.

Photo courtesy of Tracy McMullen



Amberley Green Update

By Mayor Chuck Kamine

Photo courtesy of Lt. Rick Caudill



In an effort to distinguish the property acquired by Amberley Village from the former owners and uses, Council has decided to refer to the

golf course. Council is awaiting formal proposals. In addition, we have explored possible partnerships with the county parks and other

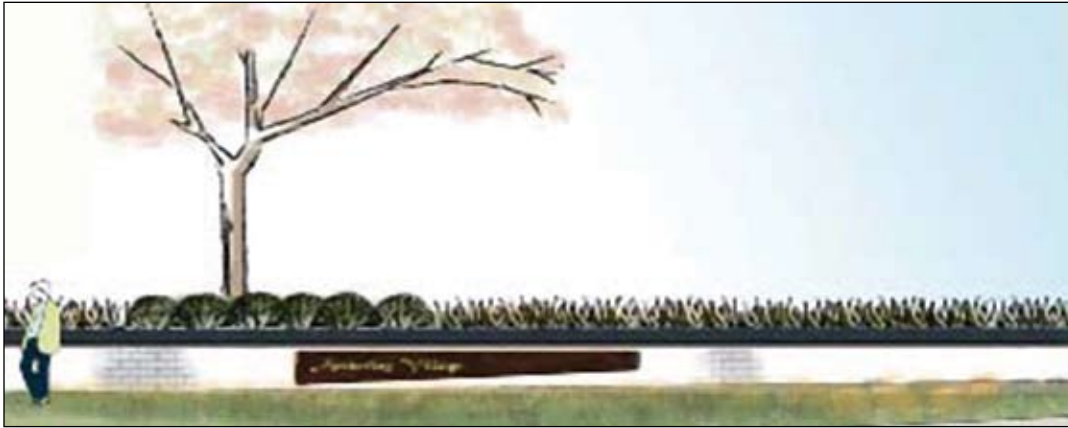
former Crest Hills Country Club site as the Amberley Green. During the last few months members of Council have met with four different groups of golf course operators to discuss possibilities for them to develop the site as a

groups and gathered information regarding costs for rehabilitation of the golf course and the building. Our maintenance crews have been involved in clearing debris and hazards from the site and building. Many dead trees were removed and a couple of sink holes were filled. We have also lowered the water level on the large pond in anticipation of possible repairs to the dam and pipes. We hope to get all hazards resolved before opening the property for public use. If anyone wishes to make a tax deductible donation to the maintenance fund, please direct the funds to Margie Crowley at Village Hall.



Gateway Project Approved

By Tracy McMullen



A plan to landscape the intersection of Ronald Reagan Highway and Ridge Road has been approved by the Village Council. This first phase at the southeast corner will create an aesthetic statement at the primary entrance to the Village.

"This intersection is the most significant entrance into our community for most people, especially non-residents from all over the Cincinnati region, said Vice Mayor Merrie Stillpass, Chair of the Amberley Village Beautification Committee. "The Gateway Project will be a means of creating an excellent first impression and an attractive welcome to Amberley for residents as well."

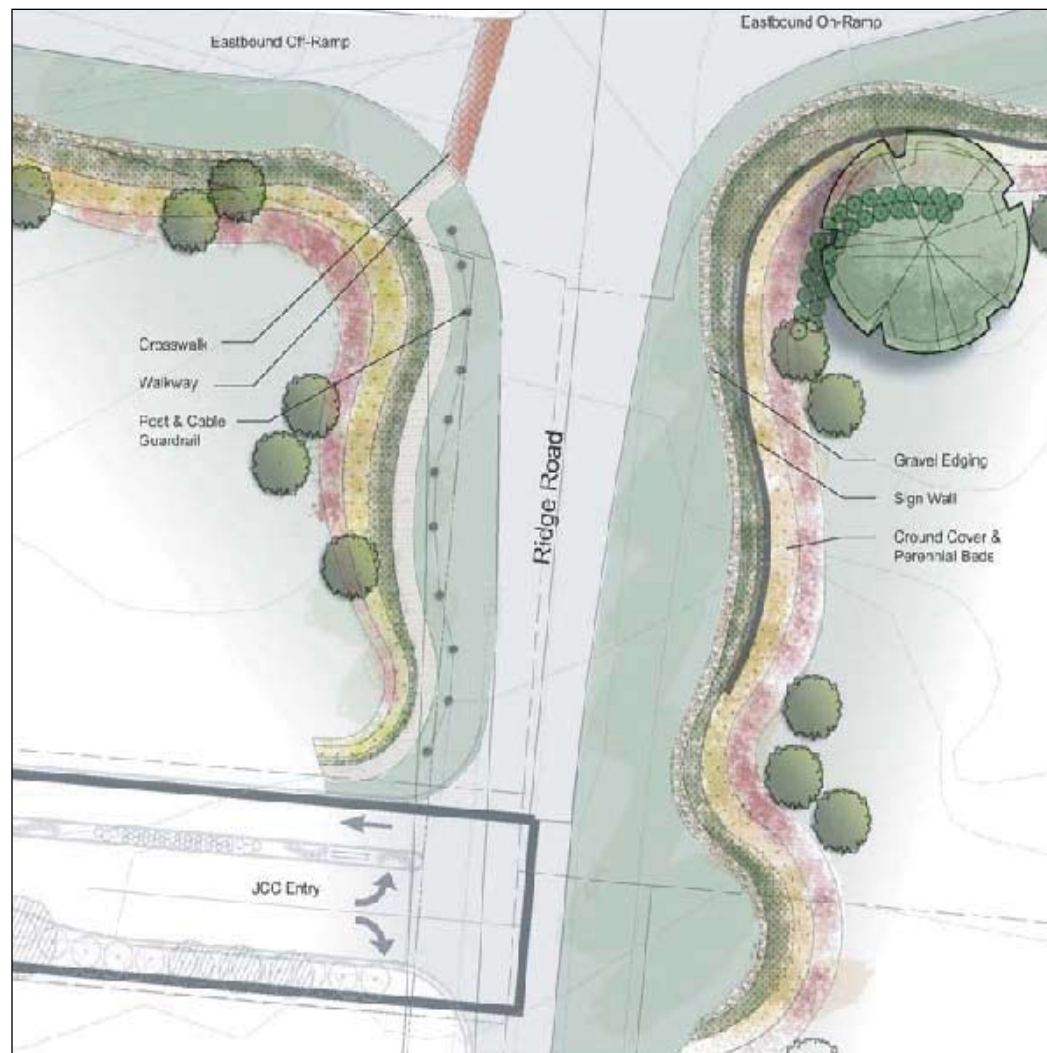
The plan culminates many hours of work by members of the Beautification Committee. They consulted with Meisner + Associates, a landscape architecture firm, on the look and feel for all the gateways and major crossroads in the Village. The plans call for a hierarchy of entry signs and features including landscape materials that are drought resistant and native species.

The first phase at Ridge and Ronald Reagan will feature a low curving wall with a cut out metal sign with backlighting. A feature tree will be

planted to symbolize the Village's green character as well as provide a vertical and sculptural design element.

Total cost for the project is estimated at \$70,000, of which Village Council has allocated \$30,000. The balance must come through grants, donations from individuals and other funding sources. Village staff is exploring grant opportunities. If you wish to support this project, make your check payable to Amberley Village and write

"Beautification Committee" in the memo line. (See Giving Back article in this issue.)





Settling in at the New Pleasant Ridge Montessori School

By Darlene Kamine

Photos courtesy of Angie Okudo

Amberley families are enjoying their first year in their new Pleasant Ridge Montessori School, the neighborhood public school for Amberley Village.


"Our girls truly bound out of the car to get their hands on something new every day," said Melissa Lauer, a resident of Belkay Lane, whose twin daughters are in their second year of preschool.

"Because of the way the Montessori program is structured, there is joy in the learning. The Montessori program has also helped make my children more self-confident. It teaches a you-can-do-it mentality."

Another aspect of the school that Melissa feels is important is the tremendous involvement of the parents. She is in the classroom frequently as a volunteer as are many of the parents whose children attend the school.

"Volunteering at Pleasant Ridge Montessori has created a wonderful community for us. We all know each other and have become great friends. I also have the chance to get to know

my children's classmates and they are wonderful."

More information about enrolling your child at Pleasant Ridge Montessori and times for tours are available at <http://pridge.cps-k12.org/about/enroll.html>. 



Ainsley Lauer makes a card for a friend.



Aubrey Lauer does the 100 board.



Pleasant Ridge Montessori OPEN HOUSE

February 12, 6:00 to 8:00 pm

Come meet the teachers, visit the classrooms, talk to current parents and find out about the Montessori program, extracurricular programming and how to enroll. All are welcome!



Plan Ahead: Emergency Preparedness

By Peg Conway, Council Member

In case you needed convincing, the arrival of Hurricane Ike last fall showed us that anything can happen. Planning ahead can reduce stress when events like this cause loss of power or other basic necessities. Each Amberley newsletter in 2009 will offer suggestions for dealing with specific weather or other emergencies.

Supply Kit

Preparing a supply kit ensures that you will have basic items on hand. Pack them in a duffel bag and store in a designated place, perhaps near your storm shelter (see Tornado Safety article in this issue). See chart to the right, for recommended contents. ☑

Food and Water	Equipment	Personal Items
Gallon of water/ person per day	Battery-powered radio	Identification
Non-perishable food	Flashlights and batteries	Copies of birth & marriage certificates, inventory of household goods, bank account numbers
At least 3 days' supply	Washcloths and towels	
Change every 6 months	Plastic tableware	Extra car and house keys
	Change of clothing, incl. sturdy shoes and work gloves	Medications
	Blankets or sleeping bag	

Tornado Safety

Tornadoes are severe rotating storms with winds that can exceed 300 miles per hour. About 1,000 occur in the U.S. each year, typically in the spring. Though only a small number actually strike occupied buildings, people can be killed or injured, usually from flying objects or collapsed buildings. You can greatly reduce your chance of injury by taking a few precautions and staying alert to weather conditions.

Plan Ahead

- Designate a shelter area in your home. Basements or storm cellars, away from the west or south walls, are the safest. Otherwise, use an interior room or hallway on the ground floor.
- PRACTICE getting to the shelter area and make sure all family members are aware of its location and when they should use it.
- Store old blankets nearby to use as protection against flying debris in the event of a tornado.

During a Tornado Watch

- Listen to radio or TV for updates.
- Be ready to take shelter.
- Pay attention to tornado danger signs in the weather – dark, greenish sky, large hail and a loud roaring sound.
- Avoid large, flat buildings with wide open areas, like shopping centers.

When a Tornado Warning Is Issued

- Head for your shelter area or if not at home, to a central, windowless area on the lowest floor of a nearby building.
- Leave vehicles and mobile homes at once.
- If caught outside, lie flat in a ditch and cover your head.
- Do not get under bridges or overpasses.

After a Tornado

- Watch out for falling debris and downed electrical lines.
- Make sure a building is structurally safe before entering. ☑



Learn More

Tornadoproject.com – Just about anything you'd want to know about tornadoes in the past and how to deal with them in the present, including a crossword puzzle in the Storm Cellar section.
Fema.gov – Detailed safety tips for tornadoes and other disasters



Tax Tips

By Kathleen Harcourt, Tax Administrator

All residents must file an Amberley Village Income Tax Return—even if no tax is due. Here are some pointers to avoid a follow up letter from the Village's Income Tax Department this year.

1. A Federal extension does not automatically extend the time to file your Amberley Village return. You must submit an extension form to the Income Tax Department for approval prior to the April 15 filing deadline.
2. You never retire from Amberley Village Income Tax filing. If you have no income taxable to the Village, put an X in the box at the top of the Amberley tax form, attach a copy of page one of your Federal Form 1040 and mail it in. If you are not required to file a Federal Tax Return, include a note on the return stating that you did not file.
3. If you live in Amberley Village part of the year, you do not stop filing an Amberley Village Income Tax Return even if you have established legal domicile in another jurisdiction. A part-year resident has the same filing requirements as a full-year resident.
4. If you have household employees take note of changes to page two of the Amberley form. Additional information is now required.
5. To receive credit for taxes paid to other municipalities, you must attach supporting documentation.
6. Attach all required documents to your tax return when filing. Include page one of your Federal Form 1040; Federal Schedules C, E, and F as well as supporting statements when applicable; and copies of all W-2s.
7. Remember to complete the Declaration section of the tax return if you are required to make estimated payments. Include payment for the first quarter of 2009 with your tax return.

If you need assistance in preparing your Amberley Village return or have questions, call 531-0130 to set up a time to meet with the Tax Administrator. If you need additional forms, they are available online at AmberleyVillage.org or you may stop by Village Hall. ☑



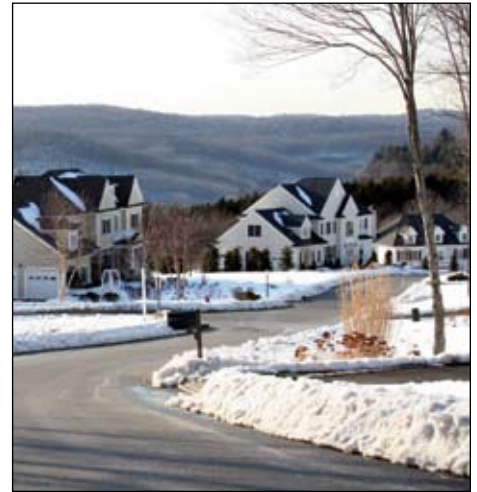
Arbor Day/Green Up Day – May 3, 2009

Mark your calendars for the annual spring celebration at Village Hall from 1:00 to 4:00 p.m. Meet your neighbors, enjoy the outdoors and help keep Amberley beautiful! Activities for all ages! ☑



Winter Yard Work

By Dave Stang



Winter is a good time to inspect your landscape and make plans for the coming spring.

A tree without leaves provides a better view of rubbing branches, splits in the trunk and branches due to storms, and decayed areas. If a decayed area is noticed in a tree, contact a certified Arborist to inspect the tree to be sure it is safe. This is a good time to correct these problems before they grow into larger problems.

The storms in 2008 have twisted and bent many trunks and branches. Often the split along the grain of the wood will not be visible while the tree has leaves on it. In winter a damaged area will seep sap and you will notice a wet area on the bark. In freezing weather, an icicle may hang from the split. If the split occurs in the branch, often the branch can be removed, but if the split occurs on the trunk then the trunk may need to be pinned.


Winter is a good time to evaluate the view out of your favorite window. Take notice now of what improvements you can make to enhance the "winter look." Next spring you may want to plant evergreens or trees with fruit that will add to your winter view. ☑



Sheds and Fences Require Permits!

By Leslie McIntosh, Council Member

If you are considering a shed or fence on your property, be aware that you are required to have a permit to do so, even if it is a replacement. In order to receive a permit, the structures must conform to Village zoning codes. Though initially this may seem overly strict, the zoning codes are in place to preserve the beauty and character of Amberley.


For information and forms, you can check the website at AmberleyVillage.org under Forms and Permits and/or contact Village Hall at 531-8675. After a complete application is submitted, building permits can be issued if your modifications are within guidelines. If not, you must seek a variance through a hearing before the Board of Zoning Appeals before starting any construction. Zoning regulations are part of the Code of Ordinances, which is available on the website under Laws. 

Community Room Rental Changes

By Nicole Browder, Clerk of Council

A new rental rate of \$25 per hour (2-hour minimum) for the Community Room became effective January 1. The rental rates will not be charged to non-profit groups meeting specific criteria, however the security deposit remains a requirement. The cash security deposit has been reduced to \$100, which will be refunded, less any damages to the room. Wear and tear on this popular Village amenity prompted the need for additional maintenance and supplies, which was recommended by the Public Buildings and Parks Committee and approved by Council at the

November meeting.

The Community Room boasts a full kitchen, dry erase board, projection screen and restroom access. It may be used for family celebrations and other private gatherings. Capacity is 60 people, auditorium style, and 40 people with table seating. If you would like to reserve the Community Room, visit our website at AmberleyVillage.org and click on the FORMS link or call the Public Safety Department at 531-2040. 



Council Actions

October:

- Resolution authorizing the Village Manager to submit an application to, and to enter a contract with, the Ohio Public Works Commission for state capital improvement program funds; and to enter into joint agreements with the City of Deer Park, Ohio, and with the Board of Commissioners of Hamilton County, Ohio, for resurfacing and improvements to Galbraith Road.
- Ordinance amending Ordinance No. 2008-18, passed August 25, 2008, to correct the approval date of the final judgment in the matter of the Crest Hills litigation.
- Ordinance authorizing the Village Manager to contract for highway salt and amending appropriations

- Ordinance amending appropriations for the fiscal year 2008, and declaring an emergency

November:

- Resolution establishing suburban deer management/reduction measure
- Ordinance adopting and enacting a supplement to the code of ordinances of Amberley Village
- Ordinance fixing compensation to be paid to the Village Manager
- Ordinance fixing compensation to be paid to the Village Police/Fire Chief



Village Hall Contact Info

Administration - 531-8675 Monday - Friday, 8:00 a.m. - 5:00 p.m.
Police/Fire Non-emergency - 531-2040 24 hours a day/7 days a week



Project ChildSafe: Firearm Safety Kits

By Police Officer Chris Fritsch

The Amberley Village Police Department will provide 200 free firearm safety kits to local residents through a partnership with Project ChildSafe, the nationwide firearms safety education program. The safety kits, which include a gun lock, will be available 24 hours a day at the Amberley Village Police Department.

"We encourage residents who own firearms to pick up a Project ChildSafe safety kit so they can securely store it," said Police Officer Chris Fritsch. "Each kit contains a safety curriculum



and cable style gun lock. The lock fits on most types of handguns, rifles, and shotguns. The goal is to prevent

a child or any other unauthorized person from accessing a firearm in your home." 📷

December:

- Ordinance making appropriations for the expenses of the Village of Amberley for the fiscal year 2009
- Ordinance transferring funds for the fiscal year 2008
- Resolution authorizing the Village Manager to enter into a contract with Prime/VFIS for property, casualty and liability insurance
- Resolution approving and adopting proposal of CDS Associates to amend its schedule of fees to be charged for services during 2009 📷



Fall Photo Contest Winner

You can almost hear the leaves rustling as you imagine walking over the leaf-covered ground in this inviting fall photo taken by our Fall Photo Contest winner, Patti Rulli from Beechlands Drive. Congratulations, Patti! In addition, photos submitted by Shelley Hattenbach, Paul Wilder, and Ronald Meyer received Honorable Mention. 📷

EMERGENCY - 911

Website: AmberleyVillage.org,
click on the Contact link

**CHECK OUT THE NEW PHOTO CONTEST THEMES FOR 2009!
SEE THE BACK PAGE OF THE NEWSLETTER.**

7149 RIDGE ROAD
 AMBERLEY VILLAGE, OH 45237
 PH 513-531-8675 • FX 513-531-8154
 AMBERLEYVILLAGE.ORG

PRESORTED STANDARD
 U.S. POSTAGE
 PAID
 CINCINNATI, OH
 PERMIT No. 5400

Community Calendar

February

2	Planning Commission/ Board of Zoning Appeals	7:00 p.m.
9	Council Meeting	7:30 p.m.
16	President's Day	<i>Administration Offices Closed</i>
23	AVBC Meeting Community Room	7:30 - 9:30 p.m.

March

2	Planning Commission/ Board of Zoning Appeals	7:00 p.m.
9	Council Meeting	7:30 p.m.
30	AVBC Meeting Community Room	7:30 - 9:30 p.m.

April

6	Planning Commission/ Board of Zoning Appeals	7:00 p.m.
10	Good Friday	<i>Administration Offices Close at Noon</i>
13	Council Meeting	7:30 p.m.
30	AVBC Meeting Community Room	7:30 - 9:30 p.m.

May

3	Arbor Day/ Green Day Celebration	1:00 - 4:00 p.m.
----------	-------------------------------------	-------------------------

Upcoming Photo Contests – New Themes!

The Winter Wonderland photo contest will continue through March 20, 2009. The winner will be notified by April 20.

For Spring, the new theme will be "Architecture in Amberley." Capture something of the diverse styles in the Village with your camera. The Spring contest will run from March 21 through June 20.

Submitted photos should be color, no smaller than 3" x 5" and no larger than 8" x 10". They must be taken somewhere in Amberley Village during the contest period. Submit your digital photo to the Outreach Chair, Peg Conway, by visiting AmberleyVillage.org and clicking on the "Contact" link. Or you can bring a print copy to Village Hall, 7149 Ridge Road, by the deadline stated above. Entries will be judged by the Village Manager, Bernie Boraten, and members of the Outreach Committee

of the Council. Winning photos are framed and displayed in Village Hall.

All photos submitted for consideration will not be returned, and the contributor grants to Amberley Village an unrestricted license to use the photos in the newsletter, on the website, or in other promotional materials for the Village. One entry per resident, please.

Members of Council, employees of Amberley Village and their immediate family members are not eligible to participate. ☑

ICRC Council Meeting Schedule

Monthly Amberley Village Council meetings can be watched on Time Warner Cable channel 4 on Thursdays at 7:00 p.m. and Fridays at 10:00 a.m. You can also view them online at icrcvtv.com. ☑